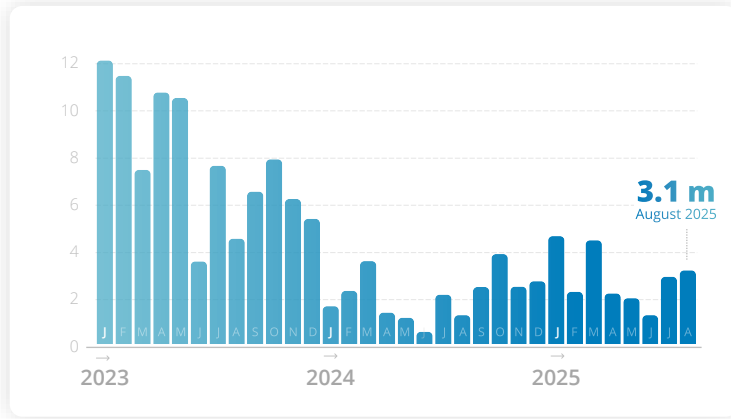




## PEOPLE ASSISTED

All activities, per month (in millions of people)

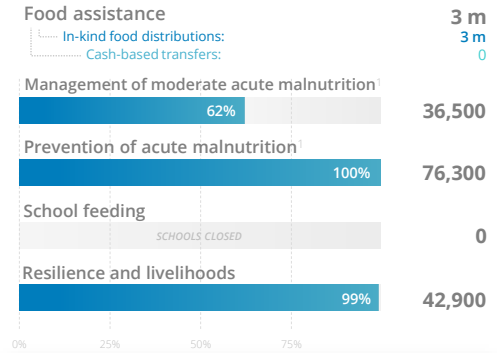


NOTE: Estimated unique beneficiaries assisted across all WFP activities. Excludes overlap between activities.



## OPERATIONAL ACHIEVEMENTS

By activity (August)



People assisted across all activities: **3.1 m**

NOTE: Monthly assistance figures are estimates and subject to change upon final beneficiary reconciliation. Percentages indicate reach against monthly operational plans. \*Nutrition figures are based on community diagnostics.

SOURCE: WFP, as of 31 July 2025



## TOP DONORS

By 2025 contributions

- United Kingdom
- Germany
- Republic of Korea
- European Commission
- Canada



## FUNDING OUTLOOK

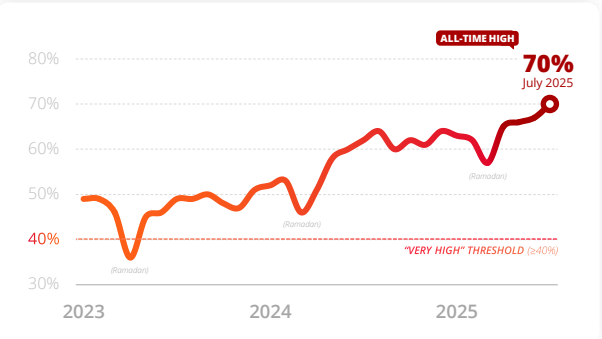
October 2025 → March 2026

FUNDING GAP: **77%** >>> NET FUNDING REQUIREMENT: **US\$ 432 m**



## FOOD INSECURITY

Rate of inadequate food consumption (FCS) [MORE DETAILS](#)

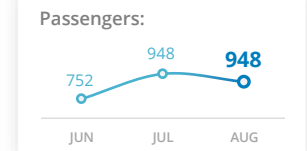
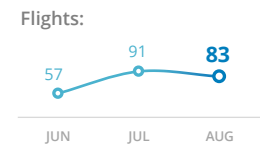


SOURCE: WFP Yemen Research, Assessment and Monitoring (RAM)



## UNHAS

United Nations Humanitarian Air Service Yemen

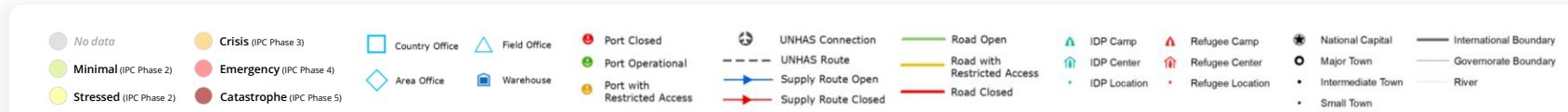
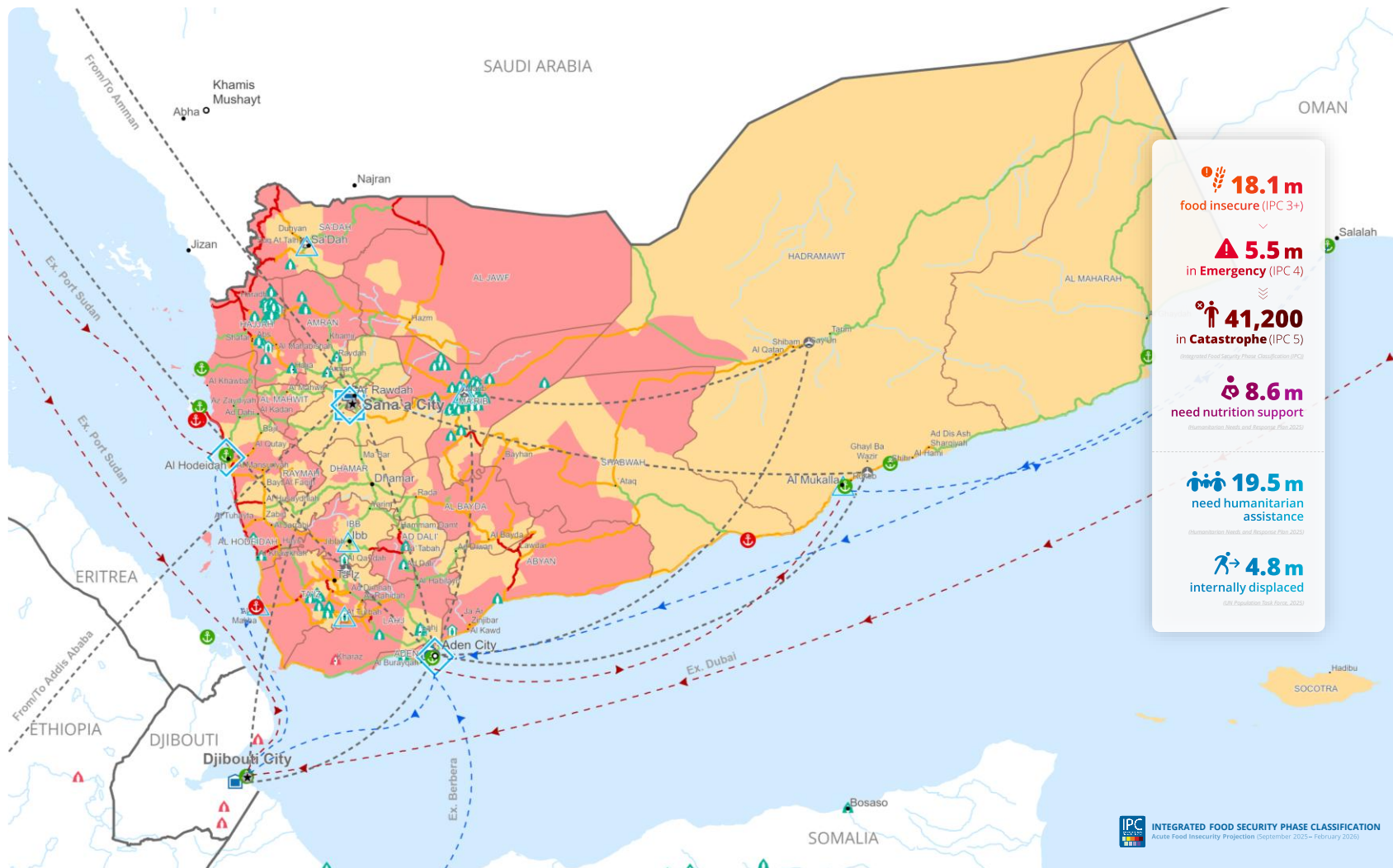
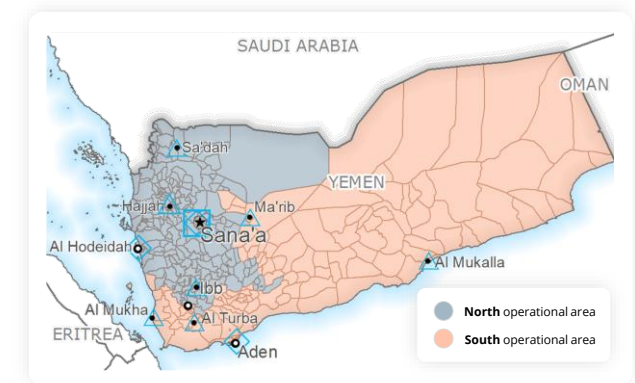


SOURCE: UNHAS Yemen



## OPERATIONAL PRESENCE

WFP Yemen



Produced by the WFP Yemen Country Office, in coordination with the WFP Operations Centre (OPSCEN) and the WFP Middle East, Northern Africa, and Eastern Europe Regional Office (MENA/EEEO). The dashboard is based on best available information at the time of production, and information on future dashboards may vary as new information becomes available. The boundaries and names and the designations used on these maps do not imply official endorsement or acceptance by the United Nations.

