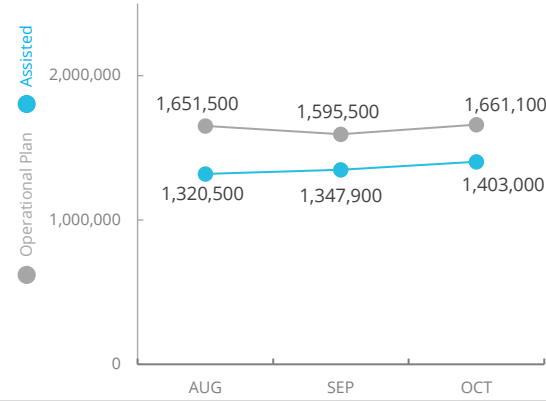


Democratic Republic of Congo

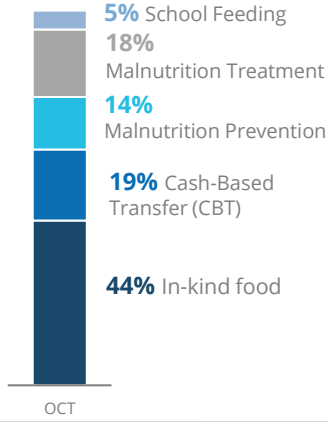
PEOPLE ASSISTED

DR Congo Country Strategic Plan

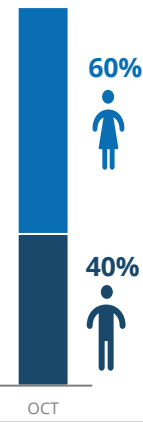


OPERATIONAL PROFILE

By Activity



By Sex



COVID-19 OPERATIONAL IMPACT

Status WFP Response adjusted

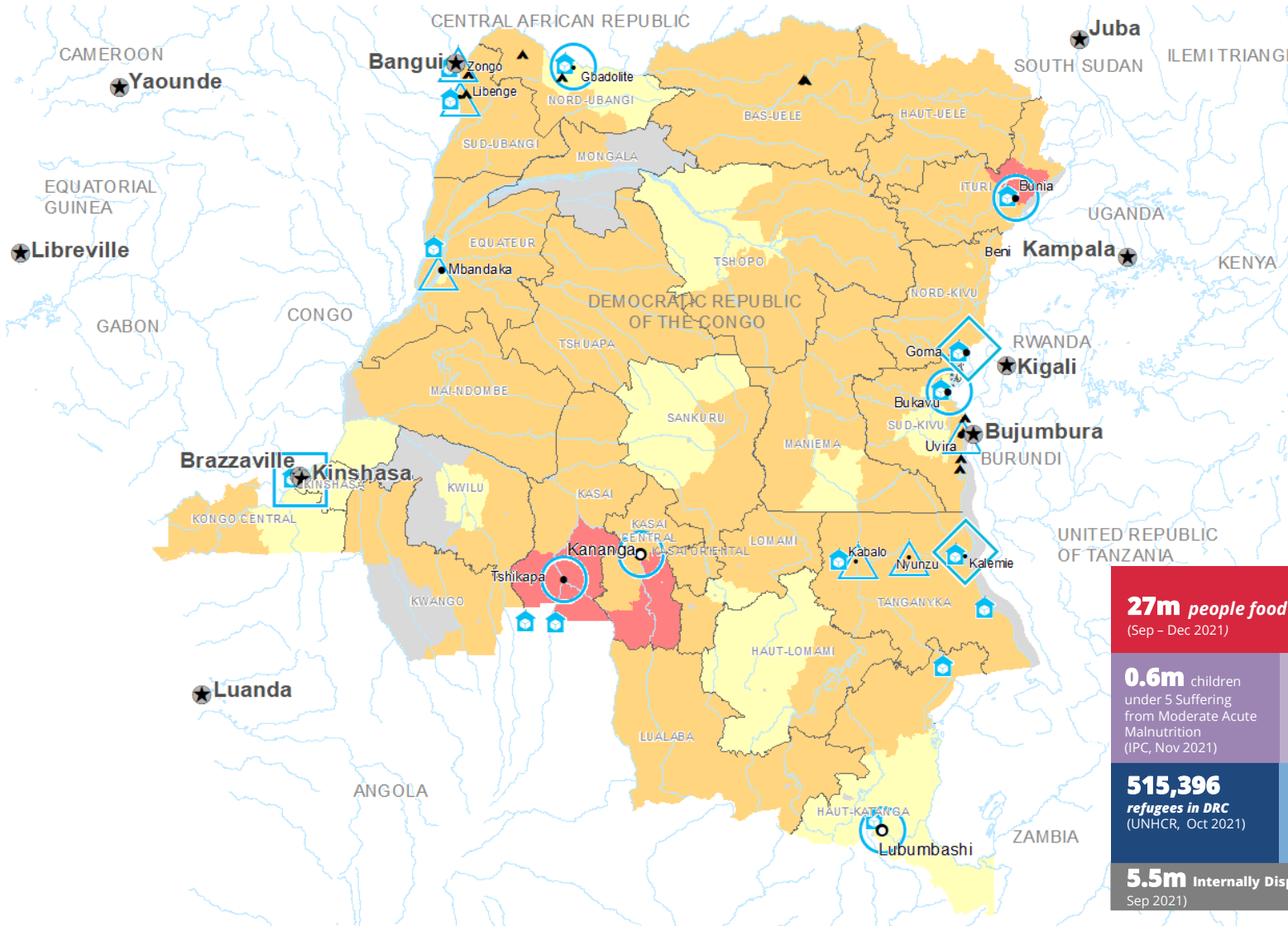
- ✔ Extended distribution timelines
 - ✔ Crowd control and social distancing measures at distribution sites
 - ✔ Mandatory hygiene measures at distribution sites
 - ✔ School feeding through take home rations
- ✔ Ongoing
 ! Partially Suspended
 ✘ Suspended

FUNDING

DR Congo Country Strategic Plan (CSP)
December 2021 – May 2022

Net funding requirements
US\$117.8m

2021 LEVEL 3 RESPONSE
Requirements US\$662.5m



27m people food insecure (IPC 3-4)
(Sep – Dec 2021)

0.6m children under 5 Suffering from Moderate Acute Malnutrition (IPC, Nov 2021)

0.2m children under 5 Suffering from Severe Acute Malnutrition (IPC, Nov 2021)

515,396 refugees in DRC (UNHCR, Oct 2021)

961,617 DRC refugees in neighboring countries (UNHCR, Oct 2021)

5.5m Internally Displaced People (UNHCR, Sep 2021)

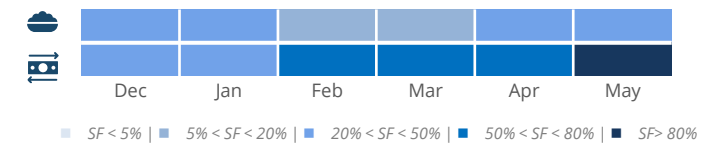
IPC Integrated Phase Classification
Projection September - December 2021

 No data	 Crisis (Phase3)	 Country Office	 Field Office	★ National Capital	 International Boundary
 Minimal (Phase1)	 Emergency (Phase 4)	 Area Office	 Warehouse	● Major Town	 Province Boundary
 Stressed (Phase2)	 Famine (Phase5)		▲ Refugee Camp	• Intermediate Town	 River
				• Small Town	

AVERAGE MONTHLY FUNDING REQUIREMENTS (US\$)

Food: 32.4m **Cash: 18.2m**

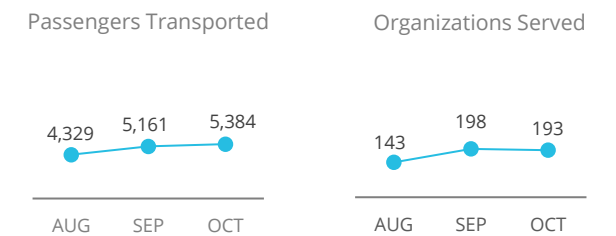
EXPECTED SHORTFALLS



WFP-LED AND SUPPORTED CLUSTERS



UN HUMANITARIAN AIR SERVICES (UNHAS)



WFP LEVEL 3 EMERGENCY