



WFP Democratic Republic of the Congo





April Situation Report #36 - 12 May 2022

Headline

- Southern Africa Leadership Meeting:** Country Directors (CDs) from across the Southern Africa region and senior leaders from the Regional Bureau of Johannesburg (RBJ) and headquarters gathered in Kinshasa for the RBJ leadership meeting from 6 to 10 April. The conference theme was “Looking forward beyond crisis: positioning ourselves for meaningful strategic engagement”. The First Lady, the Minister for Rural Development, the Minister for Planning, and the Vice-Minister for Education gave speeches. Participants examined opportunities for working with governments and regional bodies and reflected on WFP’s transition from humanitarian to development assistance.

Situation Update

- Mission to N’sele:** WFP, UNICEF and FAO took the *Fonds Social de la RDC* and the World Bank to visit the joint social protection project in N’sele. The project has operated since March 2020 to mitigate the impact of COVID-19 in N’sele, a town on the outskirts of Kinshasa. The delegation shared lessons learned between WFP’s project and the *Fonds Social* and World Bank’s social protection project. The delegation participated in a focus group discussion with 11 beneficiaries.
- Joint Steering Committee of the Peacebuilding Fund (PBF):** The CD, Peter Musoko, attended the PBF committee meeting which is jointly chaired by the DRC Minister for Planning and the Deputy Special Representative of the Secretary-General (DSRSG).
- USAID’s Bureau for Humanitarian Affairs (BHA) donor mission:** WFP and BHA visited Tshikapa from 18 to 24 April. The delegation attended food and nutrition distributions and met beneficiaries under WFP’s household-level targeting and ration size pilot in the Kasai. BHA provided positive feedback and some recommendations. Subsequently, an action plan was agreed for implementation.
- Norwegian donor mission:** In the week commencing 25 April, WFP Deputy Country Director (DCD) Natasha Nadazdin accompanied the Norwegian ambassador and their delegation to the Norwegian-funded resilience project in

	25.9 m highly food-insecure people (51% female/49% male) (50% children/50% adults)
	26 provinces affected
	5.7 m people displaced (52% female/48% male) (58% children/42% adults)
	6.3 m people reached in 2021 (59% female/41% male) (61% children/39% adults)
Total 2022 funding requirements	US\$ 645.4 m
6-month Net Funding Requirements (May - October 2022)	
Food Assistance	US\$ 93.2 m
Nutrition	US\$ 13.7 m
Other activities	US\$ 13.6 m
Total	US\$ 120.5 m

Tanganyika and WFP’s school feeding activities in Goma. The deputy ambassador interviewed with Radio Okapi, noting his appreciation for WFP’s school meals programme in facilitating access to schools.

- SDG research team interview:** On 19 April, Country Director Peter Musoko was interviewed by a research team led by Professor Jeffrey Sachs, Special Advocate for the SDGs. The Special Advocate will visit DRC to determine the country’s progress towards the SDGs at President Tshisekedi’s request.
- African Union Ambassador meeting:** On 27 April, the CD met the African Union Ambassador to DRC, H.E. Michelle Ndiaye, to discuss home-grown school feeding, south-south cooperation, and plans for Africa Day on 25 May.
- Ebola outbreak:** Since 23 April, WFP, UNHAS and the LogCluster have responded to the Equateur Ebola outbreak through logistical assistance to the humanitarian community. WFP are monitoring developments to prepare further responses if needed.

WFP Response

- Under the Country Strategic Plan 2021-2024, WFP continues its large-scale assistance targeting around **8.6 million** people with food and nutrition support in 2022.



Food and Nutrition Assistance

- **Overview:** In April, WFP reached **1,135,831** beneficiaries overall. This month WFP faced major challenges from insecurity in eastern provinces and heavy rainfall hindering road access. In-kind assistance reached **422,479** individuals. WFP assisted **327,061** people with cash-based transfers (CBT) and provided **534,209** children and pregnant and lactating women and girls with nutritious products to treat and prevent malnutrition.
- **Tanganyika:** Although poor road conditions impeded deliveries, WFP's distributions reached **142,331** people. WFP's in-kind distributions advanced well and are ongoing, reaching **55,409** people. Some **20,290** people received WFP's cash transfers. WFP completed its CBT distributions using Mobile Money Transfers in Kabalo, following the postponement of this distribution last month to allow time to respond to beneficiary feedback. WFP reached **66,632** people with malnutrition prevention and treatment activities.
- **Kasai Central and Kasai Oriental:** WFP reached **100,038** people in April under nutrition and cash-based activities. WFP conducted no in-kind distributions due to shortages of food which are also impacting school feeding activities. Some 2,259 MT of cereals and 189 MT of oil are urgently needed for the next three months. WFP's CBT distributions for April began on 28 April and will continue into May having reached **6,344** beneficiaries so far. WFP assisted **93,694** people through nutrition programming.
- **Kasai:** WFP reached **263,055** beneficiaries overall in April. WFP distributed in-kind commodities to **93,990** conflict-affected people. In-kind distributions are ongoing as the start was delayed by late arrivals of additional maize meal (MML). Nevertheless, half rations of cereal and salt were supplied. WFP completed cash-based transfers to **97,113** beneficiaries. WFP reached **71,952** people with malnutrition treatments and prevention products. Road deterioration posed major challenges in Kakenge and Mweka.
- **North Kivu:** Despite a volatile security situation and physical access constraints caused by poor road infrastructure, WFP's assistance advanced well overall in April, reaching **274,525** people. WFP provided in-kind assistance to **175,893** people, including displaced people, returnees and vulnerable host families affected by insecurity arising from Mai Mai armed groups activities. WFP distributed cash to **71,756** people in

Masisi territory. Some **26,876** beneficiaries received malnutrition prevention and treatment activities.

- **Ituri:** Despite rising insecurity, particularly by Cooperative for the Development of the Congo (CODECO) on the Route Nationale (RN) 27 and Allied Democratic Forces (ADF) attacks, WFP reached **219,279** people in Ituri in April. Some **72,317** people received in-kind assistance. WFP is launching emergency food assistance to 167,200 newly displaced people, and a High Energy Biscuits (HEB) distribution is ongoing. WFP facilitated cash-based transfers to **100,718** people, however, additional cash has frequently been unavailable through Trust Merchant Bank and Central Bank as reportedly all funds are mobilised by the Government for military operations. Some **46,244** people received assistance to treat and prevent malnutrition. Deliveries of nutritional products in Komanda and Lolwa are postponed due to ADF attacks in the area.
- **South Kivu:** WFP reached **136,603** people in April. Distributions were heavily impacted by rainfall which destroyed roads and bridges. Some **24,870** people received in-kind assistance, including displaced people, returnees and host communities in Kabare and Fizi territories. Cash distributions from the Immediate Response Account reached **30,840** people so far, including displaced people in Fizi fleeing inter-ethnic conflict and armed group activities. Additionally, **80,893** beneficiaries received products to treat and prevent malnutrition.



Protection, Gender and Accountability to Affected People

- **Risk assessments:** WFP conducted three protection risk assessments and one gender-based violence (GBV) assessment across South Kivu, Kasai and Tanganyika. They revealed that WFP and actors must (i) strengthen coordination with protection actors, (ii) raise awareness of targeting processes and biometric registrations, and (iii) consider protection in the qualitative criteria used to determine household vulnerability.
- **Capacity building:** WFP and partners in North and South Kivu and Tanganyika were trained on (i) mainstreaming child protection and GBV risk mitigation and prevention, (ii) protection from sexual exploitation and abuse and (iii) the community feedback mechanism. Partners' protection and Accountability to Affected Populations (AAP) assistants will support with feedback desks, protection risk assessments and monitoring the impact of mitigation measures.
- **Oversight missions:** WFP conducted 5 separate missions to observe biometric registrations, to support Monitoring and Evaluations colleagues with defining qualitative vulnerability

criteria, to visit nutrition and school sites, and to follow up on complaints raised on the WFP hotline. The missions also contributed to protection mainstreaming amongst technical colleagues.

- **Affected populations rights awareness:** WFP has created posters and other advocacy materials in local languages. WFP launched an AAP action plan last year which also includes using radio and community theatre troupes.
- **Gender and access analysis:** WFP DRC is piloting an analysis to improve gender mainstreaming in emergency activities. Primary data collection began in April and the report is expected at the end of May. WFP focused on emergency activities in areas of North Kivu and Tanganyika.
- **Preventing Sexual Exploitation and Abuse (PSEA) Action Plan 2022-2023:** WFP launched its action plan which dedicates a budget to sub- and area-offices across DRC. The plan provides a two-year roadmap towards preventing, mitigating, and responding to sexual exploitation and abuse.

Supply Chain

- **Pipeline:** The overall supply situation to DRC through eastern and western corridors is improving as WFP has increased its number of entry points. Current in-country stocks amount to roughly 35,000 MT with another 70,000 MT yet to reach DRC. Kasai continues to suffer from late arrivals, as it is a remote location. Some 123 MT of Corn Soy Blend+ (CSB+) arrived in Kananga after over two months in transit by rail from Lubumbashi to Kananga (1,000 km). The commodity will be immediately distributed to health centres and HIV patients.
- **Emergency response:** WFP is transferring HEB between sub-offices in eastern DRC by air to support the emergency responses. Some 25 MT of HEB were flown to Bunia.
- **Food systems:** WFP is meeting with the President of the South Ubangi *Federation des Enterprise du Congo* (FEC) to discuss and identify options for future collaboration, particularly on food production.

Clusters and Common Services

Logistics Cluster (LogCluster)

- **Ebola Support:** LogCluster is providing information about the latest Ebola outbreak in Mbandaka to the logistics community to support logistics preparedness.
- **Information Management/Geographical Information Systems:** LogCluster shared documents through [the portal](#) and published [operational maps](#). LogCluster monitored and shared physical access alerts via dcr-logs@logcluster.org.

Food Security Cluster (FSC)

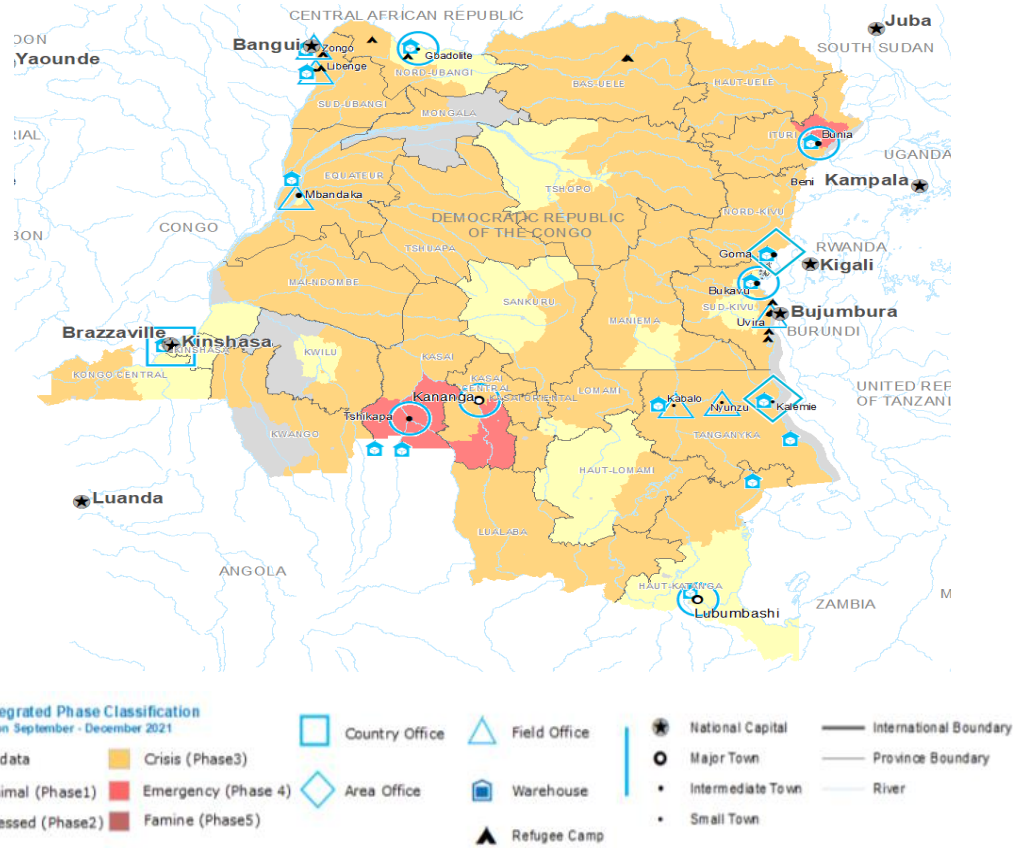
- **Chronic Integrated Phase Classification (IPC) Study:** FSC has agreed to undertake the study to support decision making in food security interventions. WFP and FSC are supporting the government with resourcing and technical support. BHA has expressed interest in financing part of it.
- **21st IPC Acute Food Insecurity:** WFP, through the FSC, will support the government in organising the 21st IPC study, planned for the summer. WFP is collecting information through the Emergency Food Security Assessment (EFSA), that has national coverage.
- **Geographic targeting tool:** WFP, through the FSC, is creating a tool, following extensive partner consultations, which will facilitate periodisation and multisectoral planning.

UN Humanitarian Air Service (UNHAS)

- On 12 April, the Chief Air Transport Officer and Aviation Officer met WFP's and UNHCR's representatives for the Republic of Congo to understand air access needs.
- **Operational Overview:** UNHAS and ECHO Flight project, managed by WFP/UNHAS, transported 4,439 passengers and 61 MT of essential light cargo.
- **Medical evacuations:** UNHAS evacuated 14 people out of Ango, Baraka, Djangi, Gbadolite, Kalemie, Mambasa, Mikenge and Walikale.
- **Special Flights:** UNHAS conducted 13 special flights for WFP, WHO, UNOCHA, UNHCR, International Red Cross, Catholic Relief Services (CRS), UNICEF and others. Six were performed on routes discontinued by UNHAS in February.

Communications

- **Regional leadership meeting:** WFP covered the conference and The First Lady's media team produced a [video for Twitter](#).
- **Community Radio Outreach:** WFP continues to broadcast messaging on beneficiary identification and registrations on local language radio in North Kivu.
- **Interviews:** Deputy Country Director (DCD) Natasha Nadazdin interviewed for *Radio Television Groupe Avenir* (RTGA) on food insecurity in DRC and to *Pour Elle Info's* video services on the roles of women in the fight against food insecurity. DCD Moumini Ouedraogo's Belgian TV news interview was broadcast as part of a piece on food security in DRC. Alexandre Reounodji, Head of Kasai Area Office, was interviewed on food insecurity by *Radio Vaticana*. Erwan Rumen, Head of Goma Area Office, interviewed on several media outlets, including Radio Okapi, after a meeting between Prime-Minister Jean-Michel Lukonde and Goma-based humanitarian actors.



Thank you to our generous donors in 2021 (listed alphabetically):



European Union
Humanitarian Aid



Liberté • Égalité • Fraternité
RÉPUBLIQUE FRANÇAISE



german
cooperation
DEUTSCHE ZUSAMMENARBEIT



From
the People of Japan



Korea International
Cooperation Agency



SWEDISH INTERNATIONAL DEVELOPMENT
COOPERATION AGENCY



Schweizerische Eidgenossenschaft
Confédération suisse
Confederazione Svizzera
Confederaziun svizra



UKaid
from the British people



United Nations
CERF
Central
Emergency
Response
Fund



Contacts

- Peter MUSOKO, Country Director: peter.musoko@wfp.org
- Georgia HERDE, Reports Officer: georgia.herde@wfp.org
- For further information, visit the Democratic Republic of Congo page [here](#).