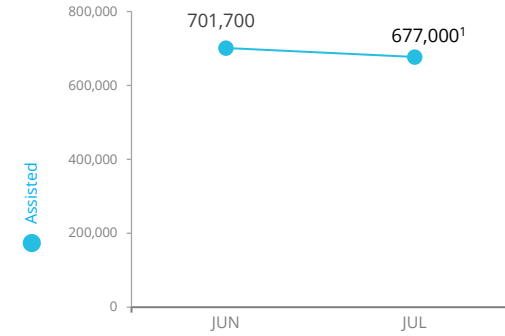


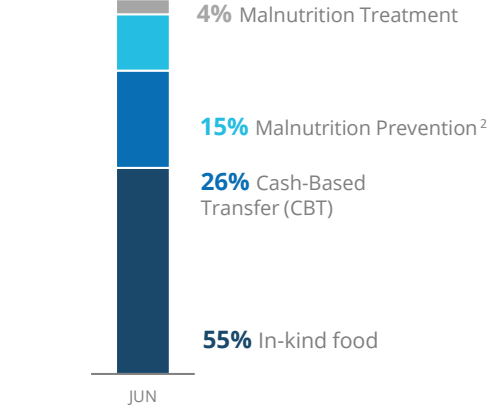
Madagascar

PEOPLE ASSISTED (Emergency Response)



¹Estimated number – consolidation of beneficiaries reached in July not finalized

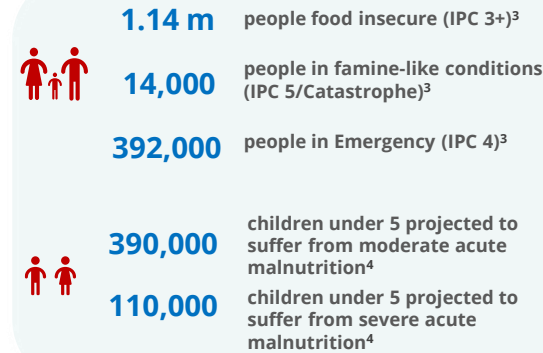
OPERATIONAL PROFILE By Activity



SOURCE: WFP, AUG 2021

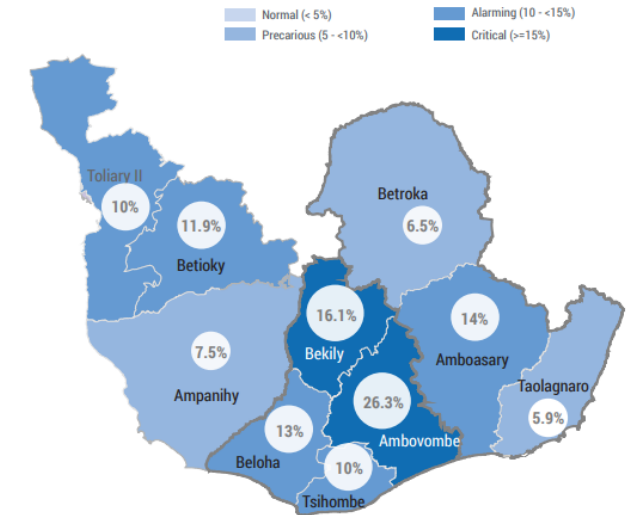
²Included into general food distributions

PEOPLE IN NEED



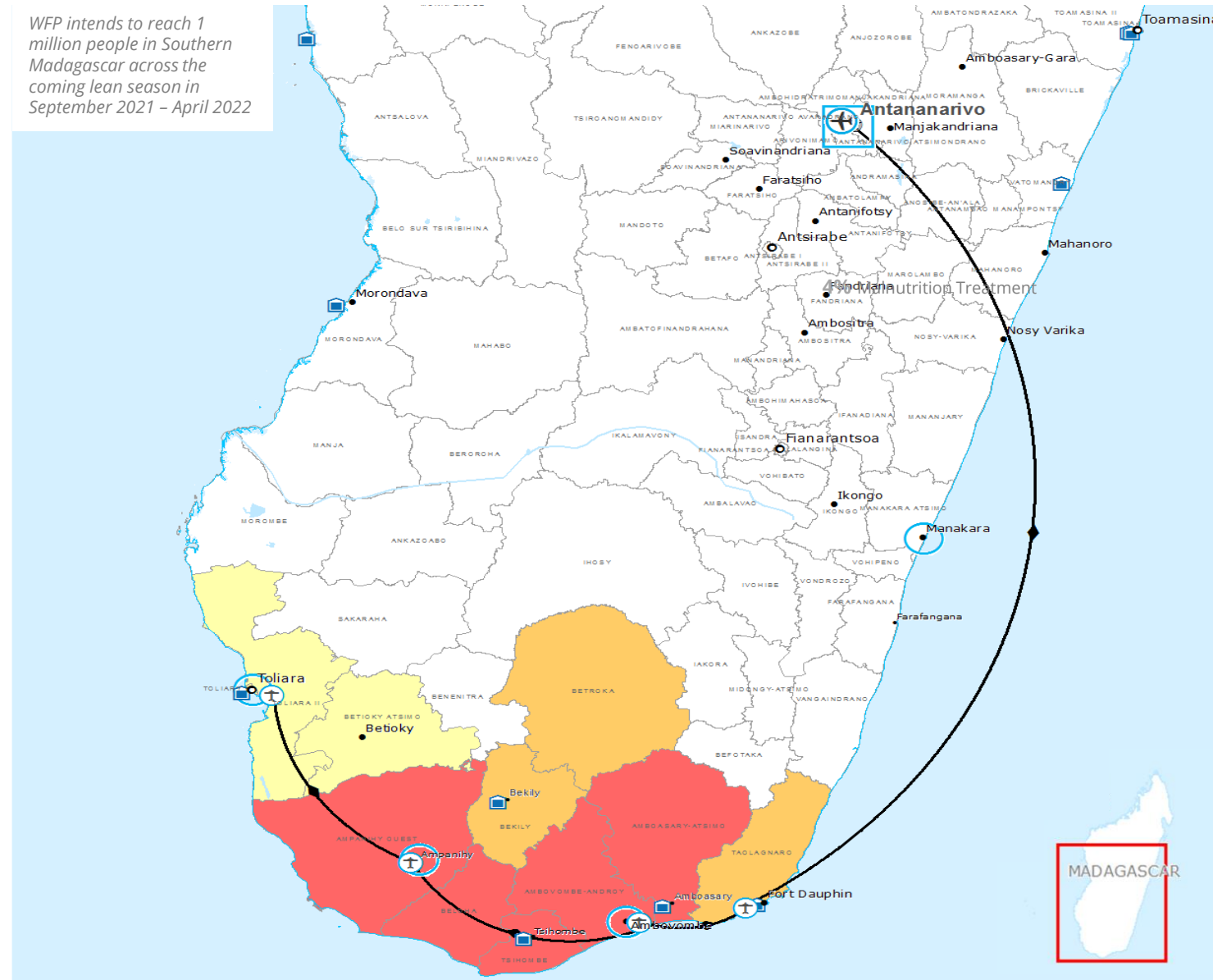
³IPC ANALYSIS APR 2021; ⁴IPC ACUTE MALNUTRITION ANALYSIS JUL 2021

PREVALENCE OF MALNUTRITION



SOURCE: OCHA MAP, JUL 2021

WFP intends to reach 1 million people in Southern Madagascar across the coming lean season in September 2021 – April 2022



FUNDING - LEVEL 2 EMERGENCY RESPONSE

Lean Season funding requirements
September 2021 – April 2022

US\$108m

urgently required for WFP to reach over 1 million people in IPC 3+ as per recently scaled-up emergency response

US\$33m

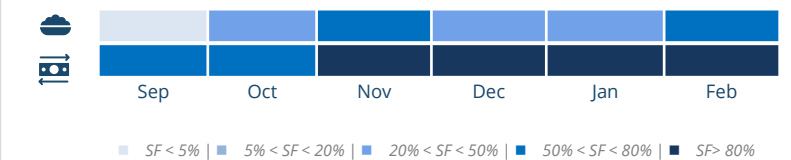
required for WFP and its partners to procure and distribute seeds in the South ahead of the planting season

SOURCE: WFP, AUG 2021

AVERAGE MONTHLY FUNDING REQUIREMENTS (6 Months -US\$)

Food: 14.2m Cash: 5.4m

EXPECTED SHORTFALLS



SOURCE: FTS, AUG 2021