

WFP PALESTINE EMERGENCY RESPONSE

Situation Report 17

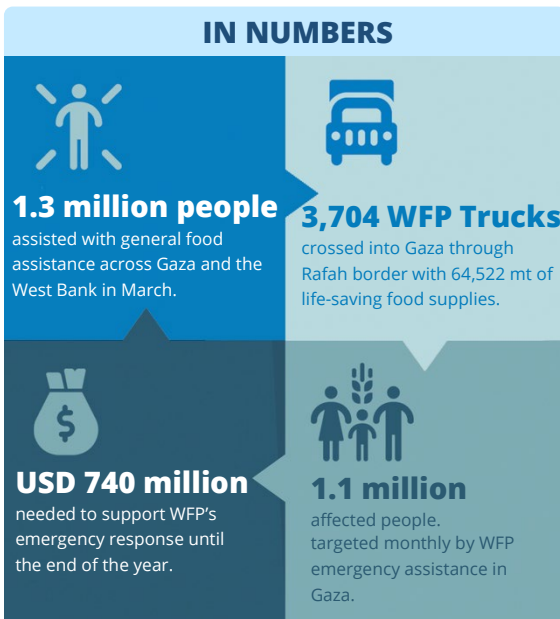
11 April 2024

Family prepares a meal in make-shift tent in Deir El Balah WFP/Ali Jadallah

HIGHLIGHTS

- The dire humanitarian conditions in Gaza require a significant increase in the delivery of life-saving aid, to avoid a fully-fledged famine. Children are dying of hunger and thirst. One in three children below the age of two is acutely malnourished.
- WFP is providing food to more than a million people in Gaza each month: ready-to-eat food parcels, hot meals, wheat flour and specialized products to address malnutrition. Most of this has been for southern Gaza but little for the north. To halt famine, daily deliveries to the north are needed.
- In March, WFP delivered around 900 mt of food via six convoys into northern Gaza, utilizing a new route that has increased the frequency of deliveries. WFP also conducted five airdrops carrying 20 mt of food.
- These efforts fall far short of the amount of aid needed to prevent a famine among the population.
- Following Israel's announcement on the opening of a new crossing for humanitarian aid to northern Gaza and the possibility of a maritime corridor, WFP is involved in urgent discussions with the authorities to clarify security and logistics arrangements.
- As needs are soaring, WFP requires around **USD 740 million** to sustain the emergency response for up to 1.1 million affected people monthly until the end of the year.

IN NUMBERS



WFP Operations



General Food Assistance (GFA)

- In March, WFP reached an estimated **1.3 million* vulnerable people** with in-kind and cash-based general food assistance across Gaza and the West Bank. In Gaza alone, WFP reached 1.1 million people.
 - In Gaza, WFP has distributed around **211,000 food parcels** that last for 10 days for internally displaced persons (IDPs) in UN-designated shelters, informal camps and within host communities, to approximately one million people.
 - WFP provided **12 million hot meals** through six partners managing a network of over 100 community-kitchens across southern and central Gaza, including areas of Gaza City. Hot meals were scaled-up during Ramadan to ensure families have access to meals.
 - 29,000 mothers and children under five received complementary feeding assistance (Lipid-based nutritional supplement [LNS]) to meet their increased nutritional needs across southern and central Gaza.

*The total beneficiaries figure accounts for overlap between people receiving more than one type of assistance.

Situation Update

- Six months into the war, Gaza is facing unprecedented levels of hunger and displacement.
- Over 90 percent of the population is displaced and a record number of people – over half a million – are on the verge of famine.
- Rafah, in southern Gaza, is densely populated and currently the primary entry point for food and other supplies. Any ground offensive would seriously disrupt relief efforts.

- In March, WFP delivered **six food aid convoys** carrying around **900 mt** of canned food and wheat flour for people in northern Gaza and **airdropped 20 mt** of fortified biscuits and canned food rations for around 24,000 people. A new route is being used to deliver assistance to northern Gaza offering some increase in access but the route still faces challenges, due to delays in clearances for trucks and drivers.
- WFP delivered over 3,300 mt of wheat flour and other resources to ten bakeries in Rafah and Deir El Balah to produce bread at a subsidised price to people in communities. Around **1.1 million bread parcels** were produced during the reporting period.
- In the West Bank, WFP expanded its assistance to an additional 100,000 vulnerable people with cash-based transfers. In March, **138,000 people** redeemed their cash entitlements.



Supply Chain

- Since the onset of the crisis and until 9 April, WFP has **operated 3,704 trucks, delivering approximately 64,522 mt of food** into Gaza. In March, WFP managed 841 trucks, delivering 16,878 mt of food.
- WFP has coordinated the delivery of **22 inter-agency convoys from Jordan to Gaza**, with a total of 261 trucks carrying food and non-food items. Discussions are on-going for scaling up the corridor delivery with relevant authorities to allow for more frequent convoys.
- WFP conducted a mission to Beit Hanoun, in northern Gaza to undertake a logistics and security assessment in preparation of a potential opening of a new crossing for humanitarian aid.

Clusters and Common Services



Logistics Cluster

- As of 11 April 2024, the Logistics Cluster had received 13,615 m³ of cargo from 20 organizations in Gaza for storage across four common warehouses. The Logistics Cluster has also supported 27 humanitarian organizations with cargo notification services at the Rafah transshipment point and provided cargo transport services.
- In the Jordan corridor, the Logistics Cluster provides humanitarian organizations with cargo consolidation

services in Amman and transportation services towards Gaza. On 8 April and for the first time, a direct convoy was dispatched from Amman to Kerem Shalom without cross-loading the cargo into different trucks. The convoy consisted of 50 trucks on behalf of 3 partners with 756.5 mt of food. All the convoy information is available on the [Logistics Cluster interactive dashboard](#).

- In Egypt, continuing the augmentation of the Egyptian Red Crescent (ERC) storage capacity in Al Arish, the Logistics Cluster installed an additional mobile storage unit (MSU) at ERC Humanitarian Kitchen. In total, 17 MSUs (5,440 m²) have been installed across different locations in Al Arish and Rafah in Egypt.



Emergency Telecommunications Cluster (ETC)

- The ETC conducted an assessment of WiFi hotspot availability for WFP distribution sites, to support WFP's efforts in registering refugees and displaced people in Deir Al Balah, central Gaza.
- On 31 March, the ETC confirmed the successful internet connection of the VHF radio repeater site in Rafah with the UNDSS server in Jerusalem. With the installation of internet connectivity and a solar-powered solution on 25 February, the repeater site is now ensuring uninterrupted 24/7 operations.



Funding

- WFP urgently requires at least USD 740 million in funding to provide support for up to 1.1 million people until the end of the year.
- **As of now, WFP has USD 314.8 million confirmed contributions:** USD 279.4 million from government donors and USD 35.4 million from the private sector including Share The Meal and Individual Giving campaigns.



Accountability to Affected Populations

- WFP's free inter-agency hotline provides information on inter-agency assistance. Since the start of the war, 30 operators have received over 290,000 calls.
- Preparations are underway for WFP to establish help and registration desks at distribution points in Gaza.
- WFP and UNRWA are working on establishing a common system to ensure no one is left unassisted. Several tools are being utilized to capture and consolidate missing data, including a pilot self-registration project.