



# WFP Democratic Republic of the Congo





## May Situation Report #37 – 16 June 2022

### Headline

- African Union (AU) School Feeding launch:** The WFP Country Director (CD) Peter Musoko and the AU Ambassador to DRC, H.E. Michelle Ndiaye, inaugurated a school feeding programme, funded for one year by the AU for 300 children at an N'sele school in celebration of Africa Day on 25 May.

### Situation Update

- Zambia Strategic Reserve mission:** From 9 to 13 May, WFP Country Director visited key sites of the Zambia Strategic Reserve with the DRC Minister of Agriculture, the DRC coordinator of the Strategic Reserve and the Zambian Head of the Strategic Reserve. The delegation discussed the DRC's roadmap for implementing its own Strategic Reserve in coming years. The food reserve allows countries to withstand climate and other shocks which inhibit food production, by ensuring a food supply is available in times of crisis and food insecurity is curbed.
- KfW Development Bank visit:** WFP's Deputy Country Director Natasha Nadazdin, with a WFP/FAO/UNICEF delegation, accompanied the donor to the joint resilience project sites in Kalehe and Minova. A meeting was held in Goma Office, at which the joint activities were presented.
- Quarterly donors' briefing:** WFP CD hosted a second quarterly donor briefing on 27 May to present WFP DRC's recently published 2021 [Annual Country Report](#) detailing its achievements. WFP elaborated on its priorities for 2022, the latest security situation updates, the progress of the ration size pilot, and a market analysis following the Russian invasion of Ukraine. Donors asked about the impact of insecurity in eastern DRC on WFP operations, for clarification on the difference between the Integrated Food Security Phase Classification (IPC) hunger analysis and FEWSNET analysis, and for updates on WFP's funding outlook.
- Global Fund panel:** On 25 May, WFP Deputy Country Director, Moumini Ouedraogo, spoke about the impact of the COVID-19 pandemic on food insecurity and WFP's operations at the Global Fund panel.

	<b>25.9 m highly food insecure people</b> (51% female/49% male) (50% children/50% adults)
	<b>26 provinces affected</b>
	<b>5.7 m people displaced</b> (52% female/48% male) (58% children/42% adults)
	<b>6.3 m people reached in 2021</b> (59% female/41% male) (61% children/39% adults)
<b>Total 2022 funding requirements</b>	<b>US\$ 645.4 m</b>
<b>6-month Net Funding Requirements (June – November 2022)</b>	
Food Assistance	<b>US\$ 86.3 m</b>
Nutrition	<b>US\$ 8.9 m</b>
Other activities	<b>US\$ 13.3 m</b>
<b>Total</b>	<b>US\$ 108.5 m</b>

### WFP Response

- Under the Country Strategic Plan 2021-2024, WFP continues its large-scale assistance targeting around **8.6 million** people with food and nutrition support in 2022.



#### Food and Nutrition Assistance

- Overview:** In May, WFP reached over **1,673,000** beneficiaries across all assistance modalities. Despite growing insecurity in eastern DRC, which posed major accessibility challenges and continued to displace people from their homes or camps, WFP assisted **774,000** people with in-kind commodities and reached approximately **425,000** beneficiaries with cash. WFP also provided **474,000** children and pregnant and lactating women and girls with nutritious products.
- Tanganyika:** WFP's May distributions reached **253,000** people across all assistance modalities. WFP distributed in-kind commodities to **167,000** people and cash to **20,000** beneficiaries. An additional **65,000** children or pregnant and

lactating women received malnutrition treatment and prevention products.

- **Kasai Central and Kasai Oriental:** WFP reached **304,000** people overall in May, as planned. Approximately **31,000** beneficiaries received cash and **159,000** benefitted from malnutrition prevention and treatment activities. WFP did not plan in-kind distributions this month due to shortfalls of maize meal in April, following delayed shipments. For June, WFP is organizing airlifts of commodities to meet the food needs of the beneficiary populations.
- **Kasai:** WFP assisted **304,000** beneficiaries in May, as planned. WFP reached approximately **94,000** beneficiaries with in-kind assistance, although half rations of salt, maize meal and pulses were distributed due to shortages. WFP reached **97,000** beneficiaries with cash-based transfers. Despite the challenging road conditions in Kakenge and Mweka zones delaying operations, WFP supplied **113,000** people with nutritious products to treat and prevent malnutrition in Kasai.
- **North Kivu:** WFP reached **380,000** people overall, despite the delays caused by mounting insecurity across the province. WFP provided in-kind assistance to **248,000** people, including those affected and displaced by the armed group attacks around Rutshuru and Nyiragongo. WFP distributed cash to **123,000** beneficiaries. Nevertheless, WFP was unable to reach the nearly 58,000 newly displaced people in the Rutshuru area. Approximately **10,000** beneficiaries received malnutrition prevention and treatment activities, although WFP was impacted by the restriction of movement on the Route Nationale 2 in light of insecurity.
- **Ituri:** WFP was affected by the increased armed group activity and anti-MONUSCO sentiment in Ituri in May, though still reached **390,000** people. Approximately **199,000** beneficiaries received in-kind assistance and another **122,000** people received cash. WFP and partners are sensitizing local authorities and communities to mitigate against the anti-MONUSCO sentiment. WFP has been running a successful biometric registration pilot in Ituri and has registered all beneficiaries digitally for general food distributions since January. WFP's cash distributions are challenged by the unavailability of cash at the banks in the region and the poor quality of the bank notes. WFP is considering a high-level discussion with partners in Kinshasa to resolve liquidity issues. Additionally, WFP distributed nutritious food products to treat and prevent malnutrition to **67,000** people. Food deliveries were also impacted by damaged roads, notably in Mambasa which remains inaccessible. WFP is using a five-day alternative route and is organising special flights.
- **South Kivu:** WFP reached **153,000** people in May including displaced people, returnees and host communities.

Approximately **64,000** people received in-kind assistance and **30,000** received cash. Additionally, **58,000** children, and pregnant and lactating women received products to treat and prevent malnutrition.

### **Supply Chain**

- **Supply corridors:** WFP has made substantial progress in supplying operations, particularly via the Dar Es Salaam port and the eastern corridor. Most offices have food supplies for 1.5 months for distributions, for the first time in nine months. Through the western corridor, supplies are arriving through the Pointe Noire and Matadi ports. Only the supply to Kananga, which is a particularly remote location, is delayed by the rainy season, poor roads, and the broken railway. WFP is airlifting 350 MT of food from Lubumbashi to ensure sufficient stock is available for June distributions. Ration cuts affected beneficiaries for several months in Kasai Oriental.
- **Local procurement:** WFP has procured approximately 10,000 MT of food locally since January.
- **Logistics:** In eastern DRC, fuel prices have risen by over 50% in some locations over the reporting period. WFP is reviewing options to supply remote villages via an alternative route. In South Kivu, Supply Chain will assess the feasibility of large-scale supply operations on the dilapidated roads to the Hauts Plateaux once the security situation improves.
- **Emergency response:** WFP has transferred 25 MT of High Energy Biscuits (HEB) by air from Goma to Bunia for emergency responses. In addition, WFP intends to transfer another 2 MT from Goma to Kalemie to support displaced people.

### **Clusters and Common Services** **Logistics Cluster (LogCluster)**

- **Physical access:** LogCluster launched road rehabilitation projects in South Kivu, using USD 1 million from the Humanitarian Fund through two national NGO partners.
- **Medical logistics:** UNHAS and LogCluster transported 9 MT of polio vaccines and other medical items in Tanganyika.
- **Information Management/Geographic Information Systems:** LogCluster shared documents through [the portal](#) and published [operational maps](#). LogCluster monitored and shared physical access alerts to the humanitarian community via [dcr-logs@logcluster.org](mailto:dcr-logs@logcluster.org).

### **Food Security Cluster (FSC)**

- **Q1 food security intervention analysis:** The Q1 analysis revealed that food security interventions reached 1.8 million vulnerable people so far this year, out of the 8.8 million

targeted under the Humanitarian Response Plan. WFP remains the largest actor of 49 organisations, accounting for nearly 50% of reached beneficiaries. The results are overall encouraging, however, the quantities of cash and food distributed only covered 24% of beneficiaries' needs and low funding rates limited the geographical coverage of interventions to eastern, north-western and central DRC. Population movements linked to armed conflicts, reduced humanitarian access, low agricultural production, rising food prices exacerbated by the Ukraine/Russia crisis, and a very limited humanitarian response in relation to needs are among the contributing factors to the deterioration of food security both in the areas affected by armed conflict and in the stable parts of the west of the country. The FSC advocates for more social safety net interventions to build the resilience of communities chronically vulnerable to food insecurity.

- **Chronic Integrated Food Security Phase Classification (IPC) analysis:** FSC launched a new analysis which will examine chronic drivers of food insecurity. USAID is interested in financing the study and WFP and FSC are urging the DRC Ministry of Planning to lead the analysis. The timeline is still under discussion.
- **Annual Acute Food Insecurity IPC:** FSC is training analysts and coordinating provincial committees to prepare the 21st analysis which is planned for July.

## UN Humanitarian Air Service (UNHAS)

- **Steering Committee:** On 16 May the Committee agreed to reinstate the Kinshasa-Goma route via Kananga/Mbuji-Mayi and flights within Grand Kasai, and to increase ticket fares (effective 1 June) following a technical discussion.
- **Operational Overview:** UNHAS and ECHO Flight project, managed by WFP/UNHAS, transported 4,900 passengers and 56 MT of essential light cargo.
- **Medical evacuations:** UNHAS conducted six medical evacuation flights out of Bijombo, Kalemie, Kananga and Walikale.
- **Special Flights:** UNHAS conducted 15 special flights for ACTED, KfW, MSF, OCHA, VillageReach, WFP and WHO.
- **High-Level delegations:** UNHAS transported WHO and a Ministry of Health delegation to Mbandaka on 7 May. UNHAS transported KfW and WFP delegations to Goma and locations in South Kivu and Tanganyika, and UNOCHA to Goma and locations in Ituri, South Kivu and Tanganyika.
- **Fuel crisis:** The global fuel crisis has caused flight cancellations in Kinshasa, Mbandaka and Brazzaville (Republic of Congo). UNHAS is monitoring stock levels and enacting contingency measures.
- **Cancellations:** UNHAS temporarily suspended flights to and

from Libenge on 10 May due to the deteriorating runway. WFP has initiated repairs. UNHAS flights to Mambasa were temporarily cancelled due to reports of anti-MONUSCO protests.

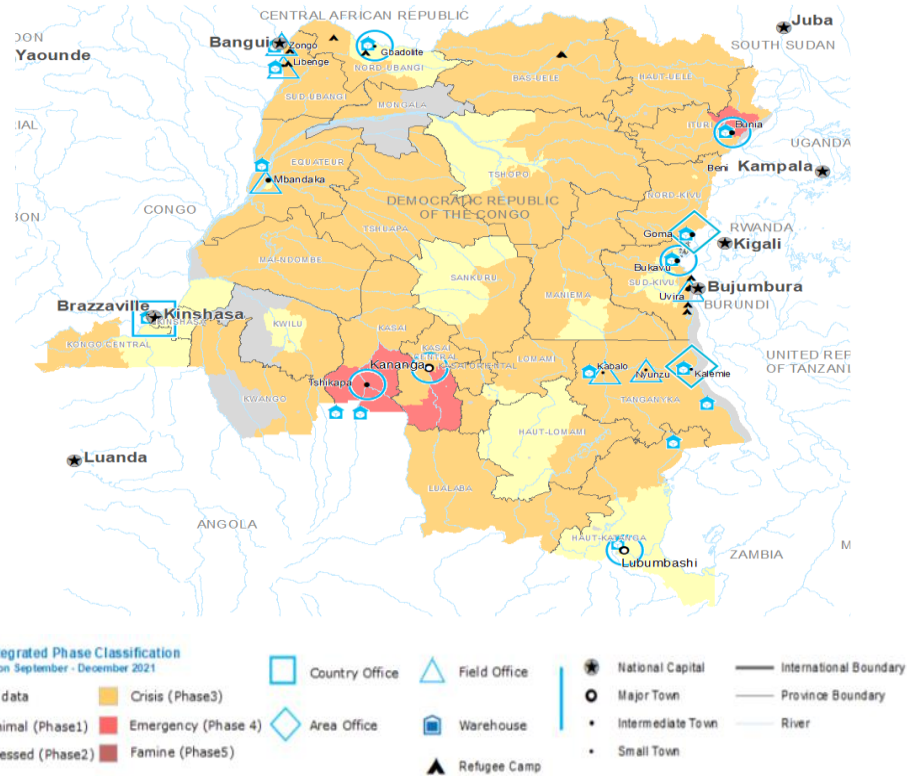
- **Insecurity:** UNHAS extended its avoidance zone over Rutshuru and North of Goma on 26 May due to intensified fighting.

## Communications

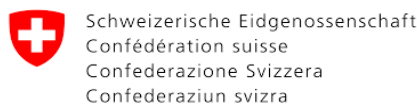
- **Interviews:** Deputy Country Director (DCD) Natasha Nadazdin gave an interview to China TV CGTN and to Radio Okapi about the KfW visit to North and South Kivu. DCD Moumini Ouedraogo gave an interview to Belgian TV news on food security in DRC.
- **African Union school feeding launch:** The school feeding launch event on Africa Day on 25 May was covered by a dozen media outlets including Le Potentiel.
- **N'sele story:** WFP [published](#) a story on how cash assistance in N'sele has improved lives.
- **Community Radio outreach:** WFP continues to broadcast messages on beneficiary identification and registrations on local language radio in North Kivu.



*At Inke refugee camp, Florida and Julienne prepare manioc (cassava) to eat. A decade after Florida was displaced, she works as a food vendor in the camp. Photo: WFP/Elizabeth Bryant.*



Thank you to our generous donors in 2021-2022 (listed alphabetically):



## Contacts

- Peter MUSOKO, Country Director: [peter.musoko@wfp.org](mailto:peter.musoko@wfp.org)
- Georgia HERDE, Reports Officer: [georgia.herde@wfp.org](mailto:georgia.herde@wfp.org)
- For further information, visit the Democratic Republic of Congo page [here](#).