

WFP Democratic Republic of Congo

Situation Report #30 - 8 November 2021

Headline

WFP DRC's distributions in October reached **1,347,000** beneficiaries with either cash-based transfers (CBT), in-kind, or nutrition assistance to prevent and treat Moderate Acute Malnutrition (MAM).

The Food Security Cluster-led Integrated Phase Classification (IPC) 20 Report revealed that **27 million** people are in IPC 3 and 4 in DRC. **26%** of the population analysed (96% of DRC's population) are food insecure. DRC continues to have the highest estimated number of food-insecure people worldwide.

Situation Update

- Visit of Princess Sarah Zeid of Jordan:** From 16 to 23 October, WFP DRC hosted Her Royal Highness Princess Sarah Zeid of Jordan. The Princess, a fierce advocate for women's and girls' rights, visited Panzi Hospital and Foundation, in South Kivu, saw WFP nutrition activities in Minova, and met with the provincial vice-governor. In Kinshasa, HRH discussed education and livelihoods activities which empower women and reduce their vulnerability to gender-based violence with the First Lady, Mrs. Denise Tshisekedi. In the closing ceremony of the First Lady's Round Table on Reparations for Gender-Based Violence, the Princess thanked the government for taking this important step and reminded delegates that this meeting marked a red line from which they could not retreat as women and girls expect a holistic change. HRH participated in a roundtable establishing a national reparation fund for survivors of conflict-related sexual violence and other serious crimes in DRC and in a dinner with the Congolese Federation of Commerce to call on the private sector to engage in activities that reduce food insecurity. After meeting with various senior government representatives in Kinshasa, the Princess attended a farewell cocktail with WFP donors, government ministers, ambassadors, and other diplomatic representatives on 22 October.

 27 m highly food-insecure people	
 26 provinces affected	
 5.5 m people displaced	
 5 m people reached in 2021 (Jan – Sep)	
Total 2021 funding requirements	US\$ 662.5 m
6-month Net Funding Requirements (Nov 2021 – April 2022)	
Food Assistance	US\$ 63.6 m
Nutrition	US\$ 8.4 m
Other activities	US\$ 27 m
Total	US\$ 99 m

- Regional Director's visit:** From 10 to 16 October, the Regional Director for Southern Africa Menghestab Haile visited WFP DRC. He met with DRC's Minister of Planning Christian Mwando Nsimba Kabulo and with other UN agencies and diplomatic representatives from African countries in the DRC, such as Egypt and South Africa. He travelled to Kananga with the Swedish Ambassador to the DRC to officially inaugurate the *Dag Hammarskjöld* guesthouse. He also spoke at WFP's multi-donor briefing on 15 October.
- CD Country Directors retreat in Namibia:** From 23 to 30 October, WFP DRC Country Director, Peter Musoko, participated in a Leadership Retreat with WFP counterparts from the Southern African region and senior management from WFP's Regional Bureau in Johannesburg. Discussions took place over the course of four days, ranging from food systems and the role of evidence generation, to financing operations and enhancing government partnerships. The DRC Country Director took part in two panel discussions:

Photo legend: a group of school children assisted by WFP in Beni (North Kivu). Credit: Bartson Lemba / WFP

'Leadership in emergencies setting the scene for longer-term development' and 'Supporting governments to achieve sustainable food systems'.

WFP Response

- Under the Country Strategic Plan 2021-2024, WFP continues with its large-scale assistance, targeting **8.7 million** people with food and nutrition assistance throughout 2021.



Food and Nutrition Assistance

- **Overview:** WFP DRC's distributions in October reached **1,347,000** beneficiaries with either cash-based transfers (CBT), in-kind, or nutrition assistance to prevent and treat Moderate Acute Malnutrition (MAM). The start of the rainy season and insecurity (particularly in Ituri and North Kivu) have imposed challenges to in-kind food deliveries, with assistance postponed to November in some territories.
 - In-kind assistance advanced well, having reached **661,000** individuals in October.
 - By the end of October, WFP reached **326,000** people with CBT.
 - WFP provided **179,000** children and pregnant and lactating women and girls (PLW/G) with nutrition assistance in September.
- **Tanganyika:** In October, WFP's Kalemie office reached **333,000** beneficiaries across all transfer modalities. This included **120,000** in-kind and **120,000** CBT distributions. October cash distributions in Pweto continued through the first few days of November. **15,000** beneficiaries were reached with nutrition activities.
- **Kasai central and Kasai oriental:** The WFP office in Kananga reached **175,000** beneficiaries in October with either in-kind, CBT, or Nutrition assistance. This included cash assistance to **28,000**. In-kind double distributions planned for October and November reached **73,000** so far in Kasai Central and Kasai Oriental. WFP reached **40,000** beneficiaries with malnutrition treatment and **32,000** with malnutrition prevention activities.
- **Kasai:** In October, WFP's Tshikapa office assisted **94,000** people overall. This includes **54,000** conflict-affected people with in-kind contributions in the Banga Lubaka health zone. CBT distributions are planned for November and December. MAM treatment activities picked up in October, reaching **37,000** people.
- **Ituri:** WFP distributed in-kind food commodities to **128,000** vulnerable people and cash to **67,000** people in October. **9,000** children and PLW/G received MAM treatment assistance, while MAM prevention reached **20,000**

beneficiaries.

- **North Kivu:** The WFP Goma Office reached an estimated **300,000** people through in-kind food distributions, CBT, or nutrition activities for MAM treatment and prevention in October. In-kind distributions assisted **151,000** beneficiaries in Beni, Masisi and Rutshuru territories. Cash transfers for **16,000** people in Kitshanga (Masisi) are ongoing. **22,000** children and PLW/G have received nutritious supplies for the treatment of MAM, whilst another **51,000** were reached with MAM prevention products.
- **South Kivu:** In October, the Bukavu office reached **132,000** people with in-kind food distributions and **30,000** with cash. **32,000** children and PLW/G received MAM treatment assistance, while MAM prevention reached **16,000** beneficiaries.
- **N'sele project:** October marked the end of phase two of the innovative urban social safety net N'sele project. Created in October 2020 on the outskirts of Kinshasa, the project has assisted nearly **100,000** vulnerable people affected by the economic impacts of the COVID-19 pandemic. WFP has already transferred over **US\$ 8.4 million** through direct cash or mobile money transfer to beneficiaries. Phase two, targeting over **80,000** people, was implemented in partnership with UNICEF and FAO. It provided an integrated package of US\$40 in unconditional cash assistance per participant over six months and additional basic services through UNICEF and productive activities through FAO. WFP and partners are seeking additional funds to implement phase three from November onwards, expanding current assistance and replicating this successful model to other parts of the country.



Supply Chain

- **Procurement:** **2,500 MT** of fortified Maize-Meal was produced in Tanzania, of which **2,000 MT** have been dispatched for distributions in Ituri throughout November and December. Additionally, local food procurement mitigated the impact of limited supplies via the Dar Es Salaam and Mombasa corridors.
- **Access:** In Ituri, the degraded security situation resulted in very unreliable supply of food to Bunia and further. WFP Supply Chain is exploring opening new corridors over the Lake Albert.
- **Food Quality Tests:** WFP is exploring the use of a Bukavu lab for its food quality tests. The local lab has returned comparable results to Italian lab results certified by WFP Headquarters. All fortified Maize-Meal procured locally is

systematically tested by both labs, to ensure strict compliance with quality requirements, particularly on aflatoxin.



Bilateral Services Provision (BSP)

- **Temperature Sensitive Logistics (TSL):** Six WFP DRC staff attended the third phase of the TSL training in Mombasa, Kenya, from 4 to 15 October. This has built staff capacity in delivering TSL.

Clusters and Common Services



Food Security Cluster (FSC)

- **Food Security:** The latest food security data from the Integrated Food Security Phase Classification (IPC) 20 Report revealed that **27 million** people are in IPC 3 and 4 in DRC. **26%** of the population analysed (96% of DRC's population) are food insecure. DRC continues to have the highest estimated number of food-insecure people worldwide.
 - Conflict and endemic poverty remain top drivers for hunger. Key hunger hotspots, in north-eastern North Kivu, Ituri and the central Kasai provinces, are weathering or emerging from longstanding unrest.
 - Other factors include climate shocks, an increase of crop-destroying pests, the ravages of Ebola and the economic impact of COVID-19, which have contributed to shrinking food production, deepening hunger and poverty.
- **Humanitarian Planning Cycle process:** The Food Security Cluster (FSC) is participating in the Humanitarian Needs Overview and Humanitarian Response Plan (HRP) process. The FSC used the prioritization criteria set by the Humanitarian Coordinator and propose a target of **8.8 million** people for 2022 HRP. A greater funding share and more activities will focus on transitional activities to help communities graduate from humanitarian assistance. This includes a bolder safety net approach involving the Government. The estimated budget is **US\$ 765 Million** to reach 8.8 million people.
- **Restructuration of the humanitarian coordination:** A recent peer-to-peer mission in DRC agreed that humanitarian coordination requires restructuring. This directly impacts the FSC Cluster. WFP/FAO management are looking at options.
- **Advocacy working group:** Through ECHO funding, a working group composed of seven international NGOs, three well-known national NGOs, FAO, WFP, and the DRC INGO coalition has been created. The group will develop an advocacy and visibility strategy for the unprecedentedly high number of food insecure people in DRC. They will mobilise resources and build coalitions for an impactful response. The strategy will cover several years, adopting a long-term change to the visibility, funding, and technical commitments for food security investment in DRC.



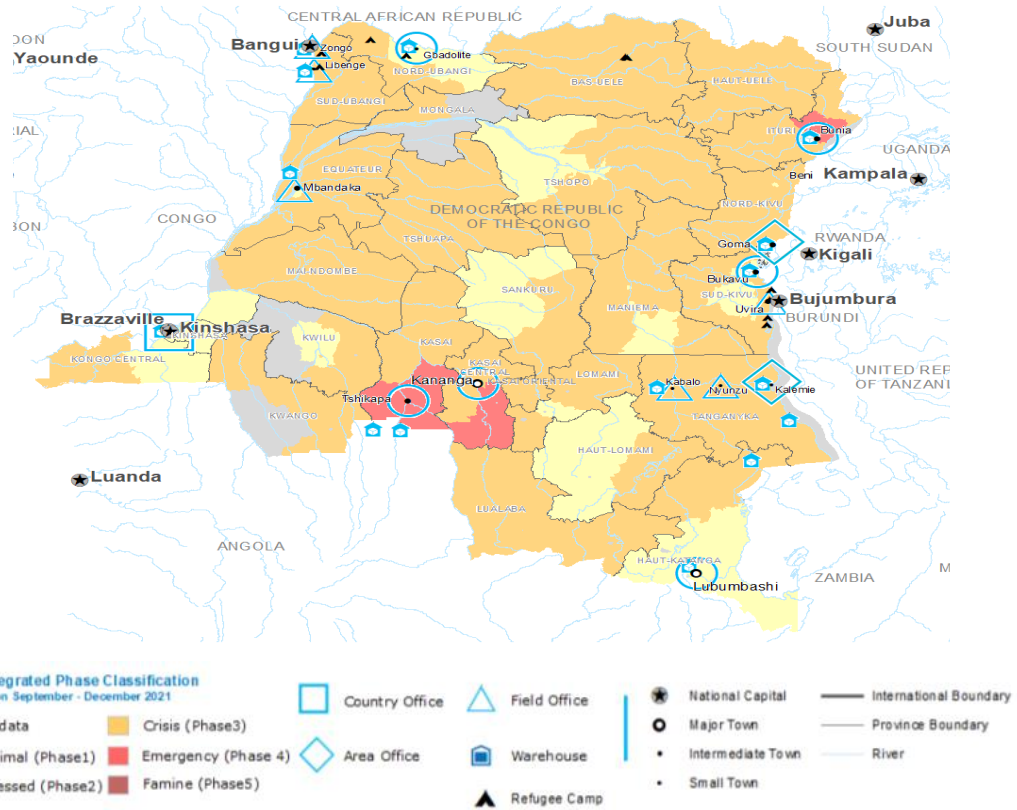
UN Humanitarian Air Service

- In October, UNHAS DRC and ECHO Flight project, managed by WFP/UNHAS, transported **5,383** passengers and **78.9 MT** of essential light cargo.
- **Tshikapa Airport runway:** The WFP-UNHAS funded project rehabilitating the Tshikapa runway is ongoing with flights operating on Wednesdays.
- **Bad weather:** Flight cancellations have occurred more frequently during this season. UNHAS recovers cancelled flights as soon as possible.
- **High Level Delegations:** UNHAS facilitated the visit of the WFP Regional Director and the Swedish Ambassador to Kasai Province on 11 to 12 October; Her Royal Highness Princess Sarah Zeid of Jordan's visit to Kinshasa, Bukavu and Goma between 18 to 20 October; the *Groupe de Coordination des Partenaires UE* composed of the EU, UK, Spanish, German and Swedish ambassadors to the DRC and the Resident Coordinator/Humanitarian Coordinator in DRC to Kananga and Tshikapa on 27 and 28 October.
- **Evacuations:** UNHAS conducted **four** medical evacuations and **three** security evacuations. UNHAS also transported cold chain vaccines for Meningitis to Kisangani for MSF on 7 October. A team of specialists evaluating the reported epidemic in Tshopo province were also transported.



Communications

- **HRH Princess Sarah Zeid visit:** Radio Okapi followed the Princess' full trip in the East [here](#). Okapi produced a '*dossier du jour*' and an interview on the joint resilience project around the Minova visit which was also covered by several local radios.
- A **WFP insight story** on north-eastern DRC was published in [English](#) and [French](#).



Special thanks to our donors in 2020 - 2021 (listed alphabetically)



Contacts

- Peter MUSOKO, Country Director: peter.musoko@wfp.org
- Georgia HERDE, Junior Reports Officer: georgia.herde@wfp.org
- For further information, visit the Democratic Republic of Congo page [here](#).