



World Food Programme

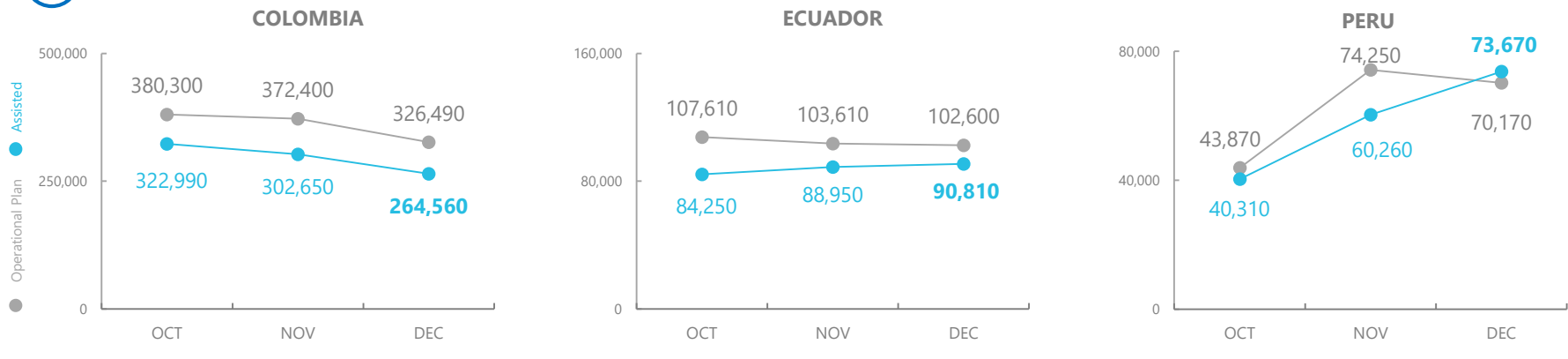
January 2022

Emergency Dashboard

SAVING LIVES  
CHANGING LIVES

# Sub-regional migrant crisis – Colombia, Ecuador, Peru

## PEOPLE ASSISTED BY WFP



SOURCE: WFP, JAN 2022

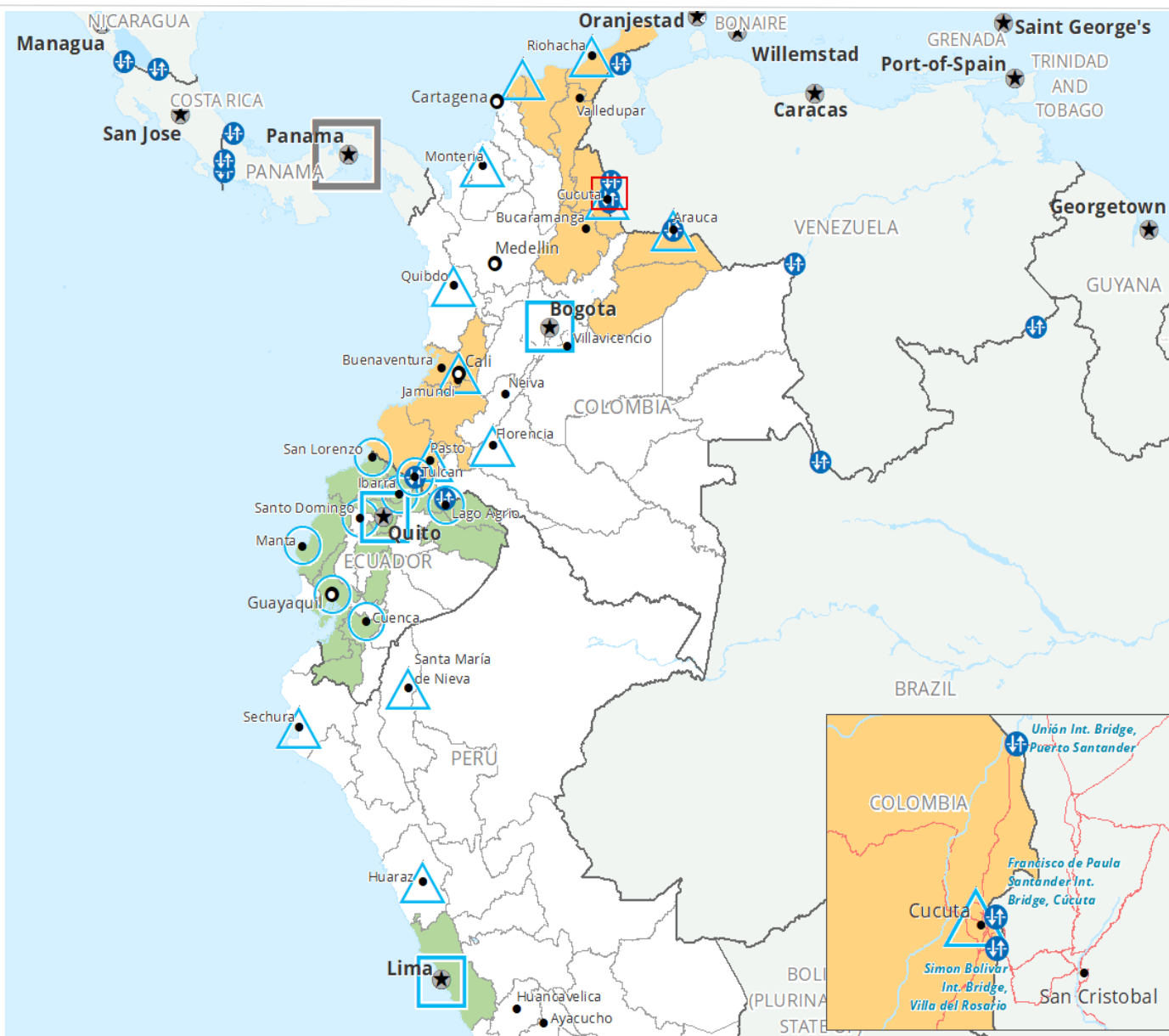
## FUNDING

February - July 2022 (6 months)

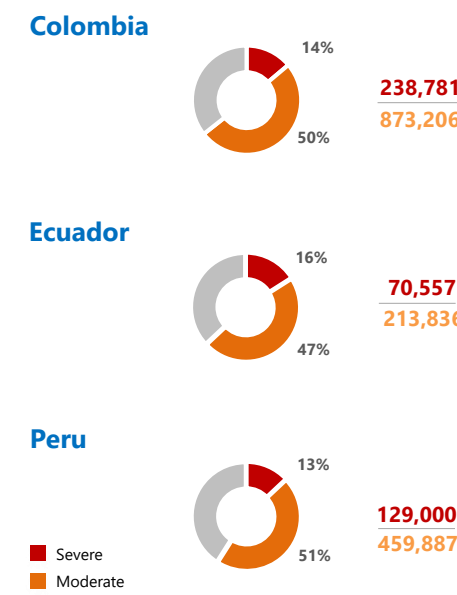
### Overall Net Funding Requirements (USD)

Colombia	111.7m
Ecuador	21.0m
Peru	11.8m
<b>Total</b>	<b>144.5m</b>

SOURCE: WFP, JAN 2022



## Migrants Severely and Moderately Food Insecure



SOURCE: RWI, JAN 2022

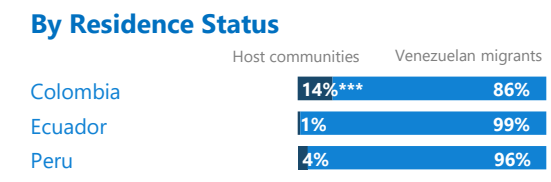
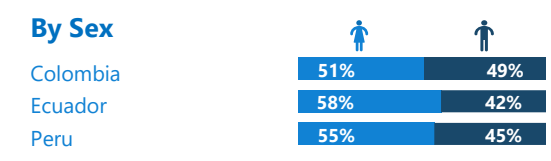
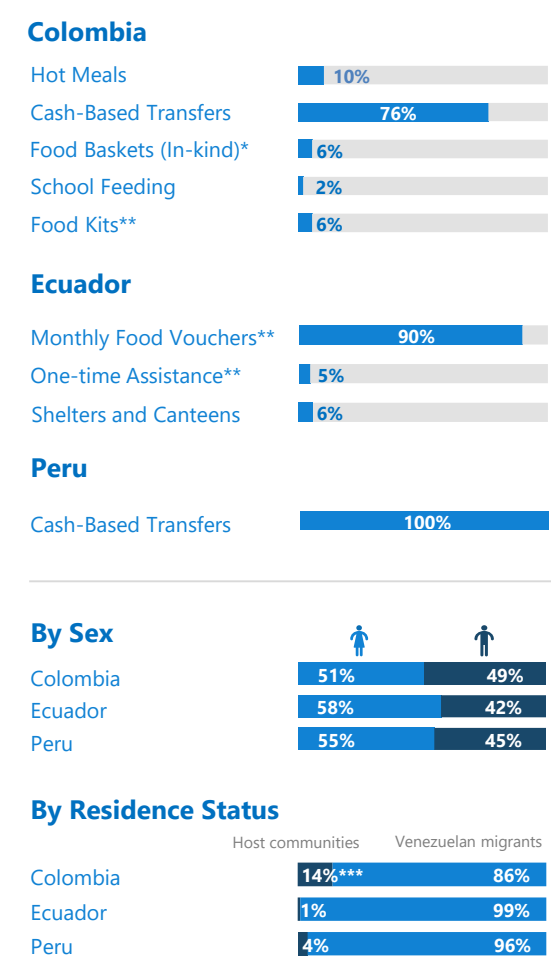
## Venezuelan Refugees and Migrants in Latin America and the Caribbean

Colombia	1.8m
Ecuador	0.5m
Peru	1.3m
Other Countries	1.4m
<b>Total</b>	<b>4.9m</b>

SOURCE: R4V, JAN 2022

## OPERATIONAL PROFILE

Percentage of People vs Modality



\*Food basket for one month and food kits for three days while in-transit. \*\*Both modalities include CBT. \*\*\*The figure includes Colombian returnees. SOURCE: WFP, JAN 2022

- Regional Bureau
- National Capital
- Border Crossing Point
- International boundaries
- Country Office
- Major Town
- WFP Operational Presence for L2 Response
- Department boundaries
- Sub Office
- Intermediate Town
- WFP Operational Presence related to the migrants crisis
- Zoomed Area
- Field Office

Sources: WFP, UNGI, GAUL, GLCSC, OCHA, UNHCR. The designations employed and the presentation of material in the map(s) do not imply the expression of any opinion on the part of WFP concerning the legal or constitutional status of any country, territory, city or sea, or concerning the delimitation of its frontiers or boundaries. © World Food Programme 2022.

WFP LEVEL 2 EMERGENCY SINCE 30 MARCH 2018  
L2 EXTENDED UNTIL 31 JANUARY 2022

