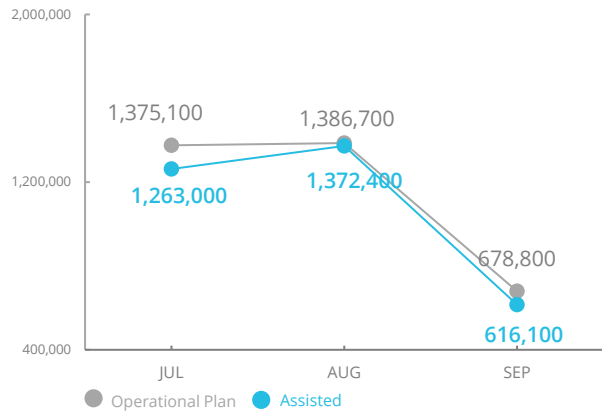
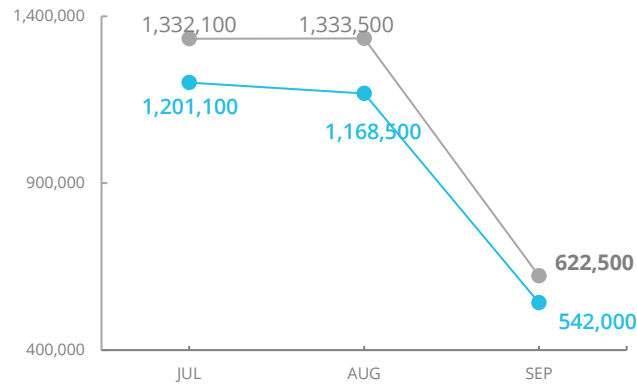


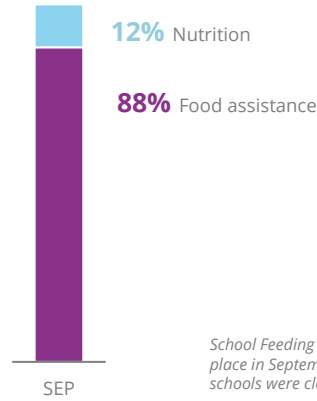
PEOPLE ASSISTED Country Strategic Plan (CSP)



PEOPLE ASSISTED Crisis



OPERATIONAL PROFILE



School Feeding did not take place in September as schools were closed.
SOURCE: WFP, OCT 2021

FUNDING

(Burkina Faso CSP) - Emergency Response:

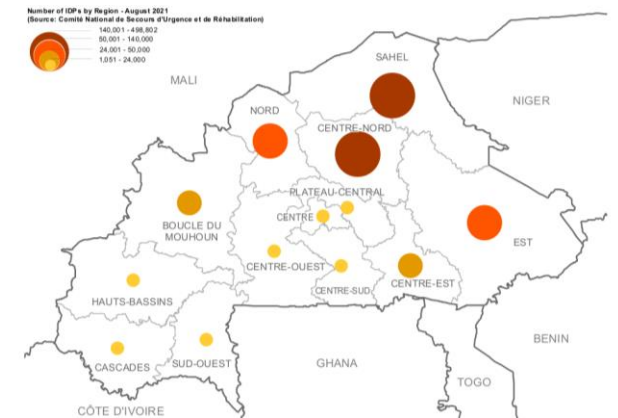
November 2021 – April 2022

Net funding requirements (6 months)

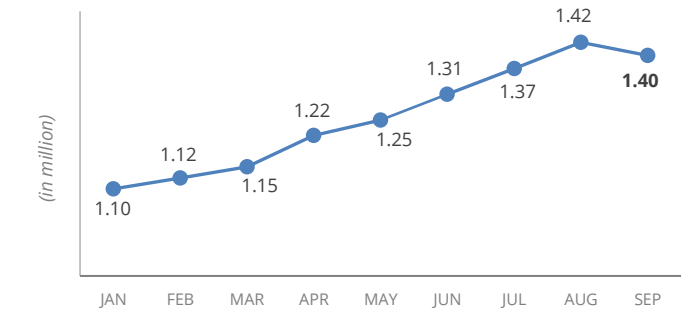
US\$ 119.9m



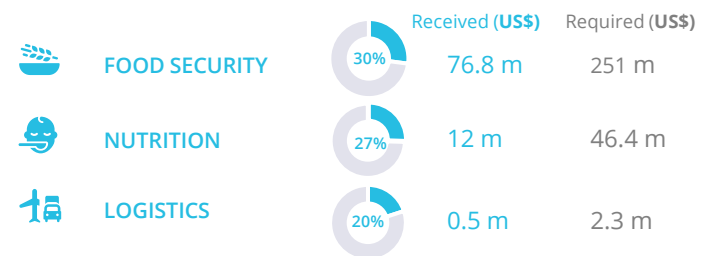
INTERNAL DISPLACEMENT CONCENTRATION AS OF AUGUST 2021



INTERNAL DISPLACEMENT FIGURES 2021



WFP-LED AND SUPPORTED CLUSTERS



UN HUMANITARIAN AIR SERVICES (UNHAS)



WFP LEVEL 3 EMERGENCY

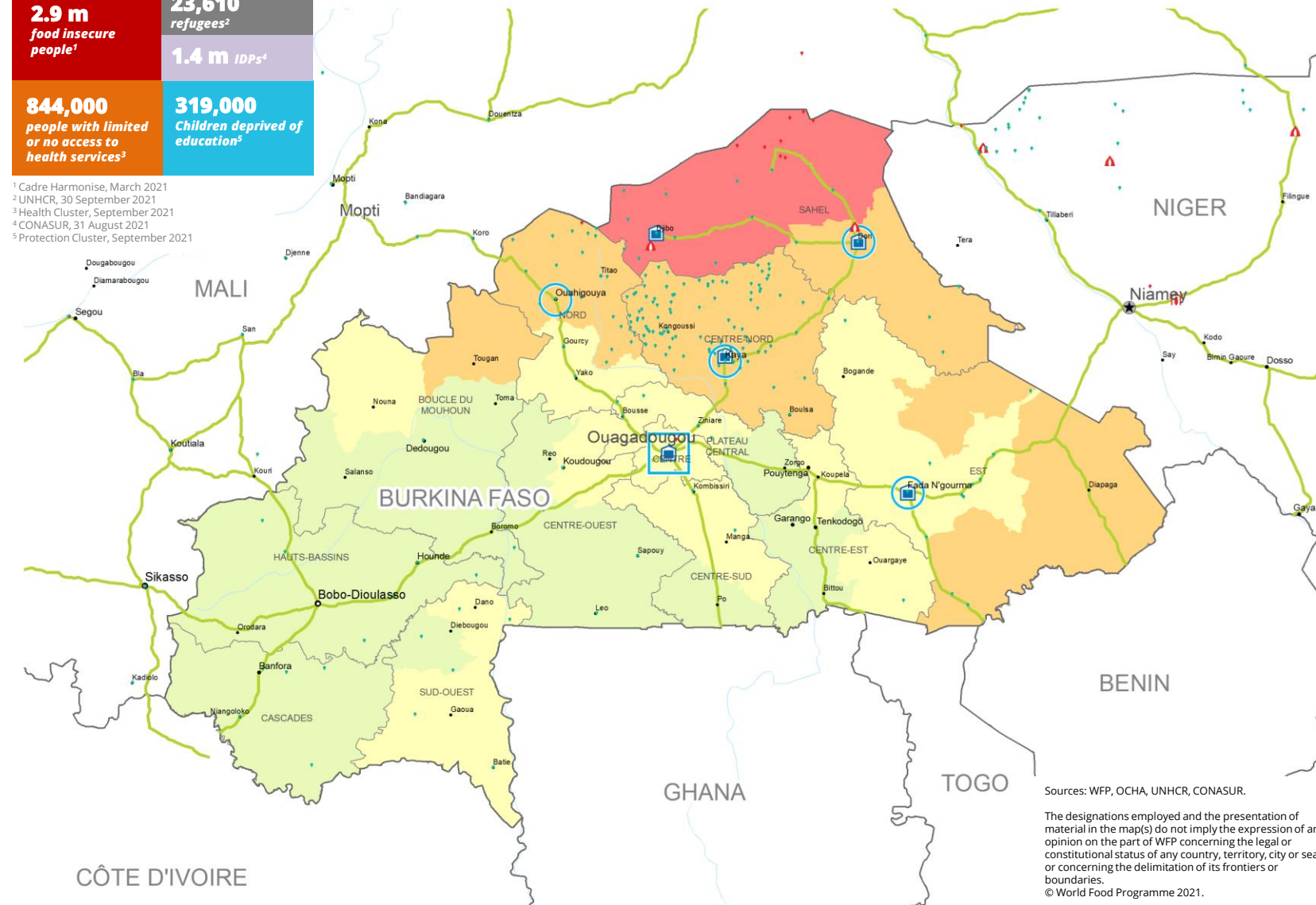
Level 2 Emergency since 10 May 2019
part of the Central Sahel Level 3 Emergency since 09 September 2019

SITUATION REPORT and COUNTRY BRIEF



2.9 m food insecure people ¹	23,610 refugees ²
844,000 people with limited or no access to health services ³	1.4 m IDPs ⁴
	319,000 Children deprived of education ⁵

¹ Cadre Harmonisé, March 2021
² UNHCR, 30 September 2021
³ Health Cluster, September 2021
⁴ CONASUR, 31 August 2021
⁵ Protection Cluster, September 2021



CH Food Security Classification Projected phases June - August

- No data
- Minimal (Phase1)
- Stressed (Phase2)
- Crisis (Phase3)
- Emergency (Phase 4)
- Famine (Phase5)

- Country Office
- Sub Office
- Field Office
- IDP Camp
- IDP Center
- IDP Location
- Refugee Camp
- Refugee Center
- Refugee Location
- Warehouse
- Road Supply Route
- National Capital
- Major Town
- Intermediate Town
- Small town
- International Boundary
- Region Boundary
- River