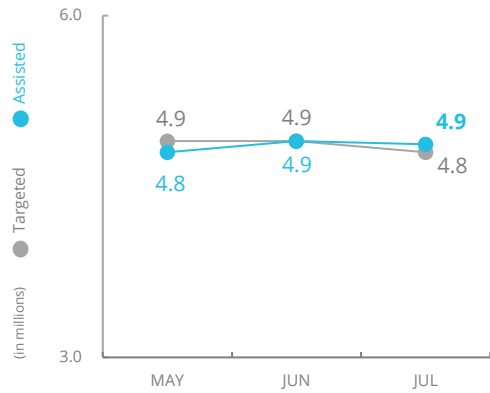


PEOPLE ASSISTED

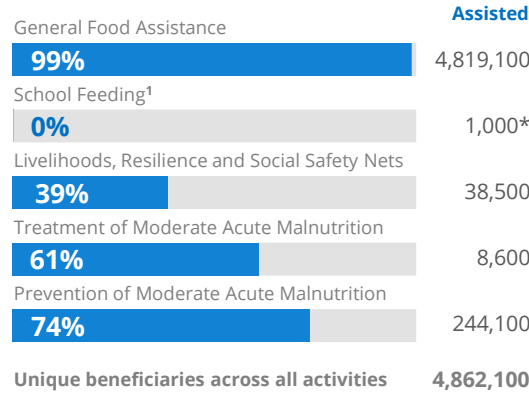
General Food Assistance



SOURCE: WFP, 20 SEP 2021

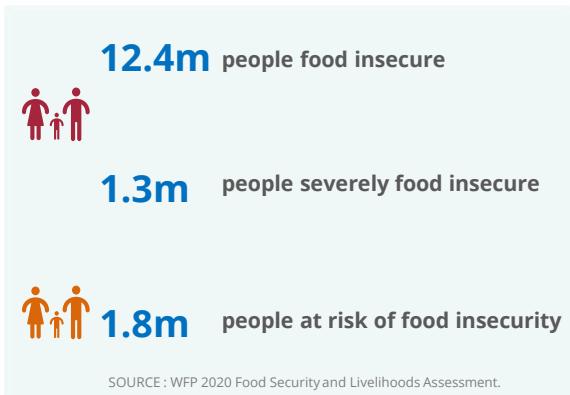
OPERATIONAL PROFILE

By Activity (July)



¹ Distributions will resume with new school year in September. * Children supported by WFP at their final national exams as part of the national exams response by education sector.

PEOPLE FOOD INSECURE



FUNDING

Syria Interim Country Strategic Plan (ICSP)

September 2021 - February 2022

US\$479.7m

Net funding requirements

2021 LEVEL 3 RESPONSE
Requirements: US\$1269.9m
Funded: US\$624.7m

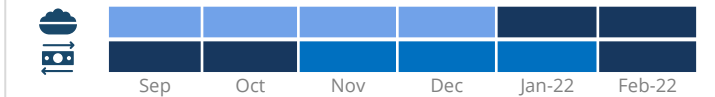


AVERAGE MONTHLY FUNDING REQUIREMENTS

(6 Months - US\$)

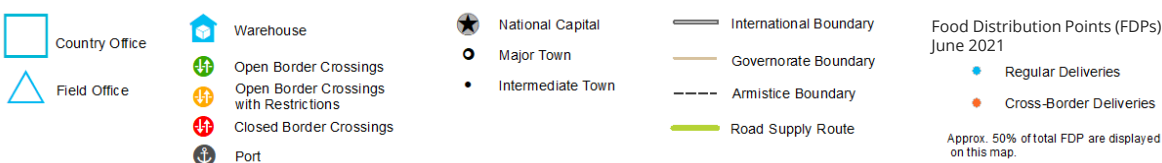
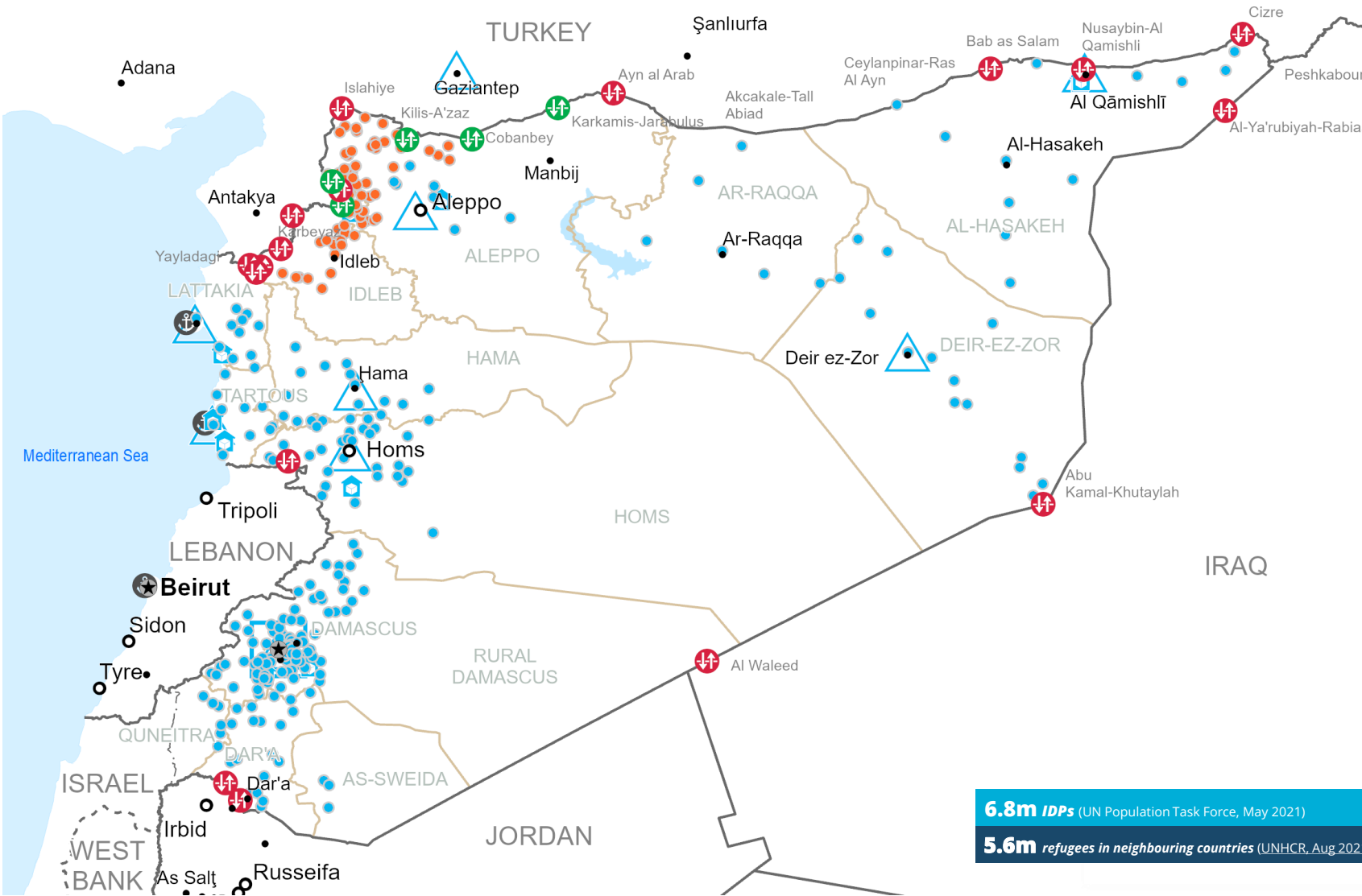
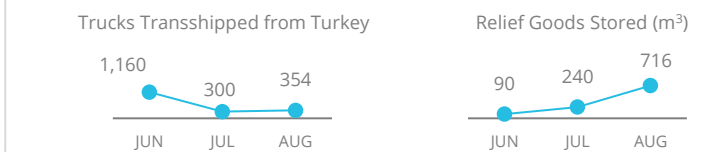
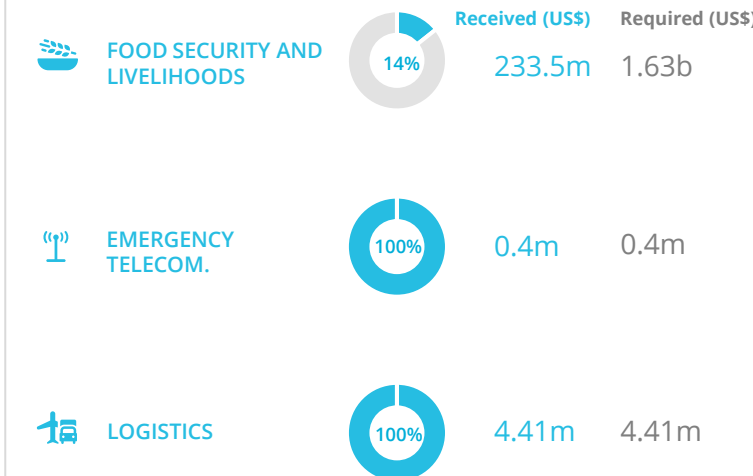


EXPECTED SHORTFALLS



SF < 5% | 5% < SF < 20% | 20% < SF < 50% | 50% < SF < 80% | SF > 80%

WFP-LED AND SUPPORTED CLUSTERS



Sources: WFP, UNGIWG, GAUL, GLCSC, OCHA, UNHCR.

The designations employed and the presentation of material in the map(s) do not imply the expression of any opinion on the part of WFP concerning the legal or constitutional status of any country, territory, city or sea, or concerning the delimitation of its frontiers or boundaries. © World Food Programme 2021.