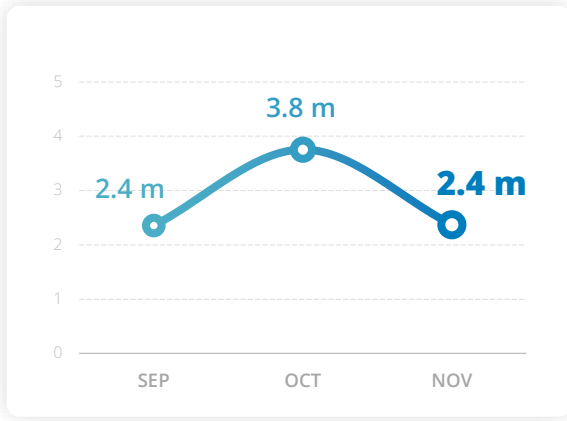


## PEOPLE ASSISTED

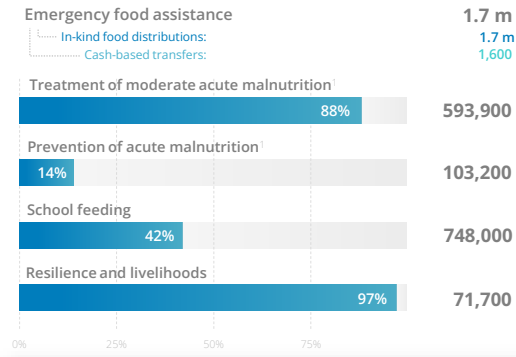
All activities



Estimated unique beneficiaries assisted across all WFP activities. Excludes overlap between activities.

## OPERATIONAL ACHIEVEMENTS

By activity



People assisted across all activities: **2.4 m**

Monthly assistance figures are estimates and subject to change upon final beneficiary reconciliation. Percentages indicate reach against monthly operational plan. <sup>1</sup>Nutrition figures are based on community dispatches.

Source: WFP Yemen, November 2024

## TOP DONORS

By confirmed contributions (2024)

- United States of America
- European Commission
- United Kingdom
- Kingdom of Saudi Arabia
- Germany

Source: WFP, as of 30 November 2024

## FUNDING

Yemen interim country strategic plan (2023 - 2025) [MORE DETAILS](#)

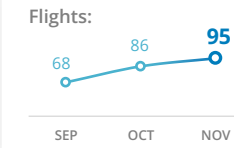
6-MONTH NET FUNDING REQUIREMENT:

# US\$ 620 m

DECEMBER 2024 → MAY 2025

## UNHAS

United Nations Humanitarian Air Service

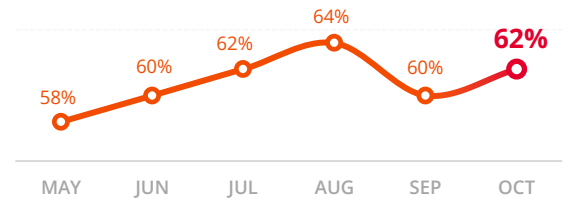


SOURCE: UNHAS, November 2024

SOURCE: UNHAS, November 2024

## FOOD INSECURITY

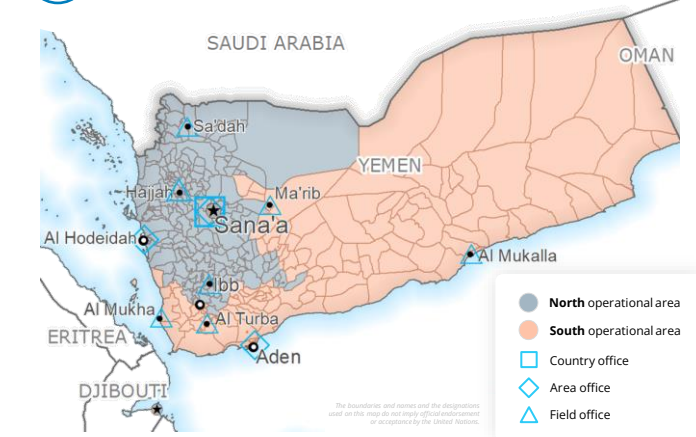
Inadequate food consumption (FCS) [MORE DETAILS](#)



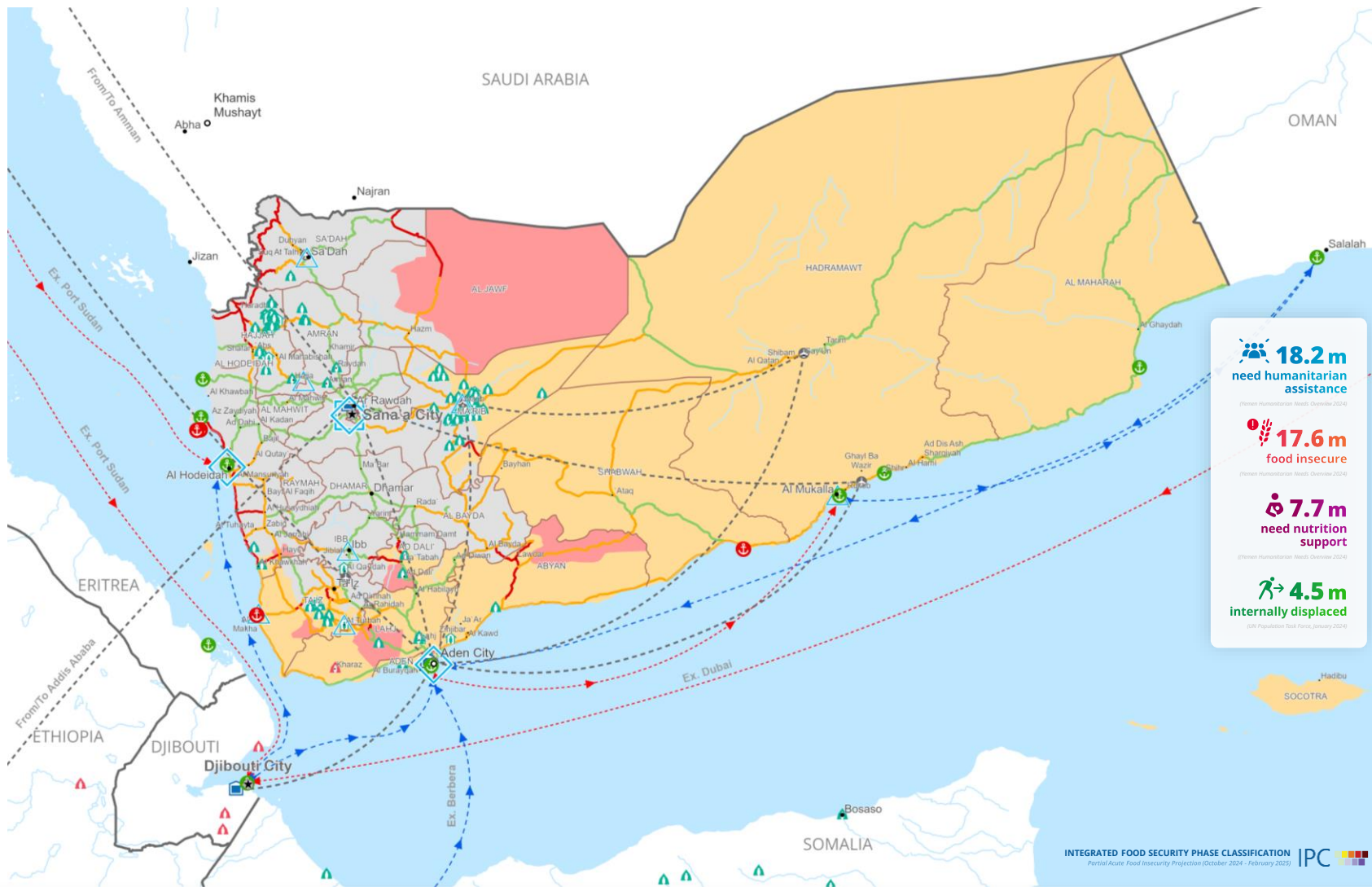
SOURCE: WFP Yemen, November 2024

## OPERATIONAL PRESENCE

WFP Yemen



The boundaries and names and the designations used on this map do not imply official endorsement or acceptance by the United Nations.



● No data	● Crisis (Phase 3)	□ Country Office	△ Field Office	● Port Closed	● UNHAS Connection	— Road Open	△ IDP Camp	▲ Refugee Camp	● National Capital	— International Boundary
● Minimal (Phase 2)	● Emergency (Phase 4)	□ Area Office	■ Warehouse	● Port Operational	— UNHAS Route	— Road with Restricted Access	△ IDP Center	▲ Refugee Center	● Major Town	— Governorate Boundary
● Stressed (Phase 2)	● Catastrophe (Phase 5)			● Port with Restricted Access	→ Supply Route Open	— Road Closed	● IDP Location	● Refugee Location	● Intermediate Town	— River
					→ Supply Route Closed				● Small Town	

Produced by the WFP Yemen country office in coordination with the WFP Operations Centre (OPSCEN) and the WFP Regional Bureau for the Middle East, Northern Africa, and Eastern Europe. The dashboard is based on best available information at the time of production, and information on future dashboards may vary as new information becomes available.

The boundaries and names and the designations used on these maps do not imply official endorsement or acceptance by the United Nations.

WFP emergency response phase: **CORPORATE ATTENTION**

For more information: **SITUATION REPORT #11, 12 DECEMBER 2024**