

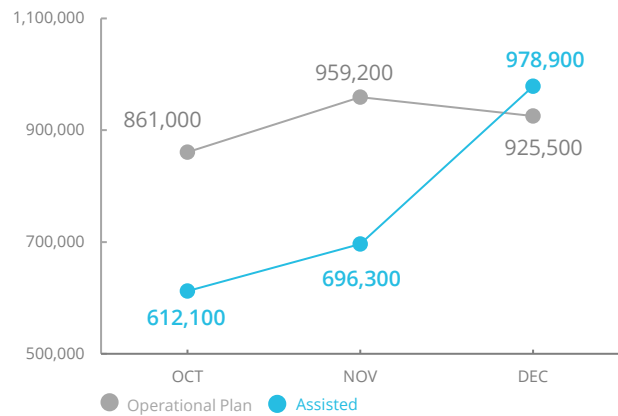


World Food Programme

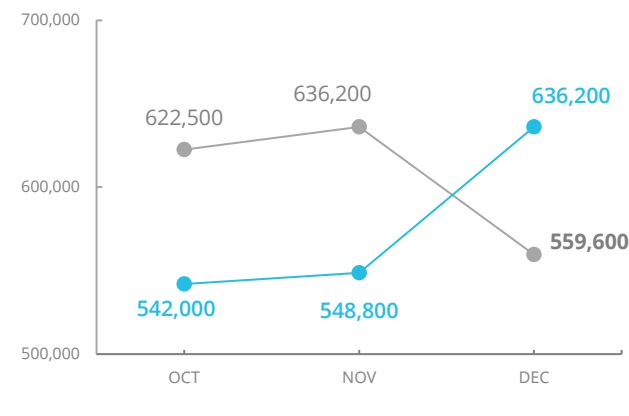
Burkina Faso

Emergency Dashboard | January 2022

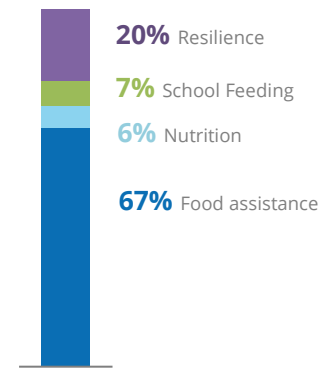
PEOPLE ASSISTED Country Strategic Plan (CSP)



PEOPLE ASSISTED Crisis



OPERATIONAL PROFILE



SOURCE: WFP, JAN 2022

FUNDING

(Burkina Faso CSP) - Emergency Response:

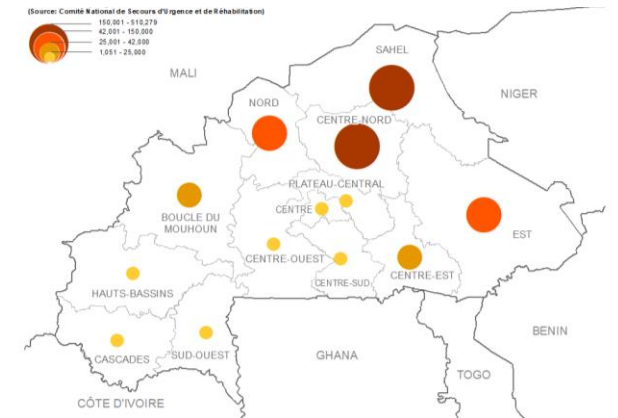
February - July 2022

Net funding requirements (6 months)

US\$ 133m



INTERNAL DISPLACEMENT CONCENTRATION AS OF NOVEMBER 2021



SOURCE: WFP, JAN 2022

SOURCE: CONASUR, NOV 2021

2.6 m food insecure people¹

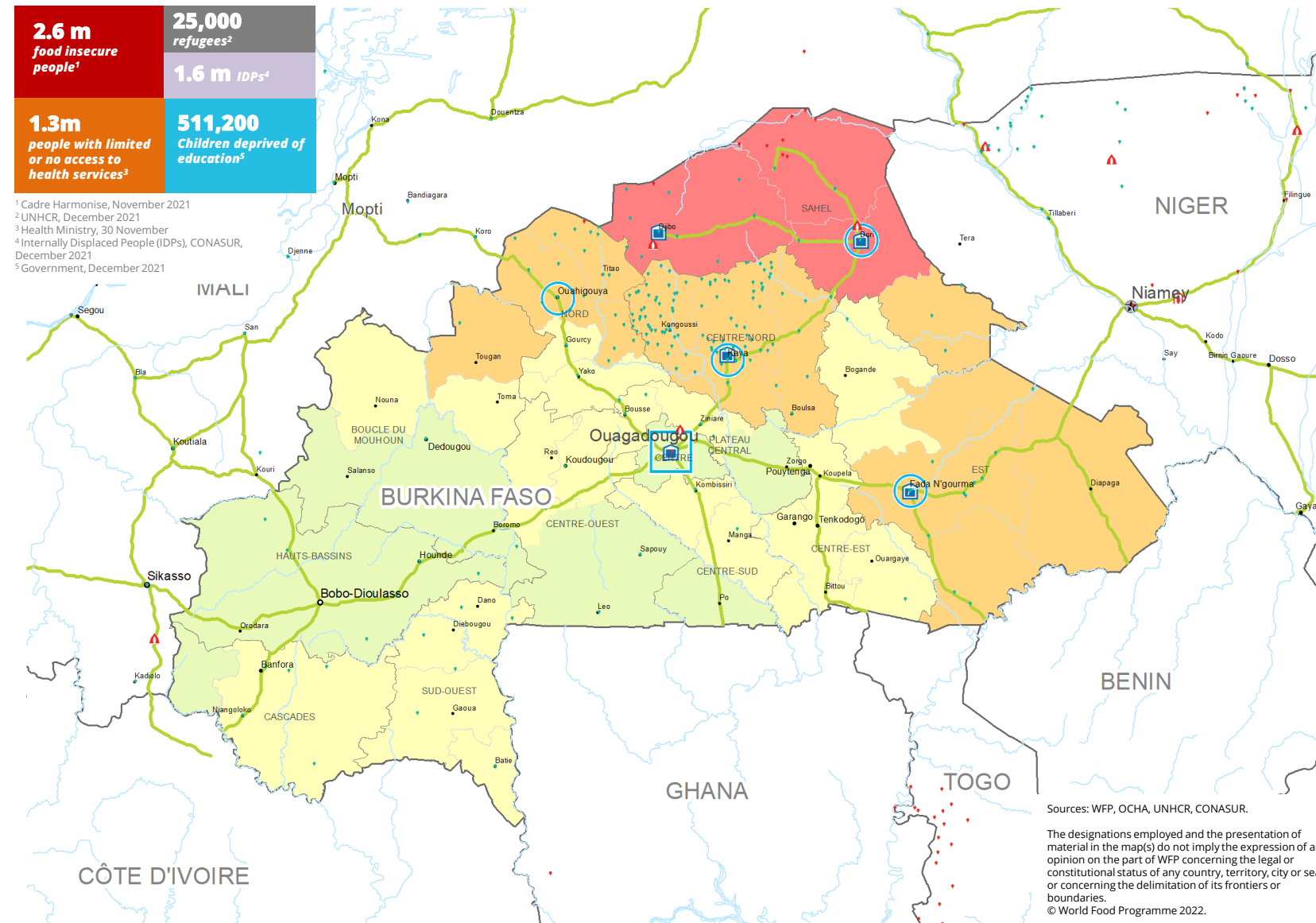
25,000 refugees²

1.6 m IDPs⁴

1.3m people with limited or no access to health services³

511,200 Children deprived of education⁵

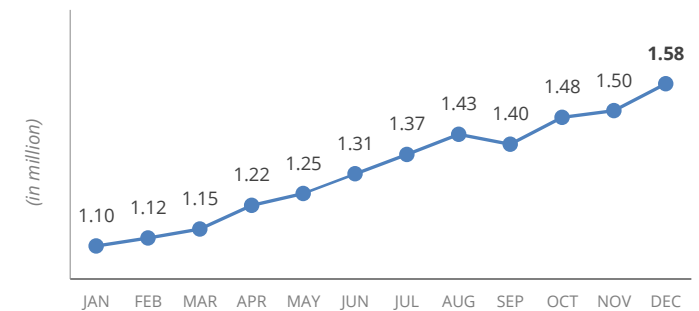
¹ Cadre Harmonisé, November 2021
² UNHCR, December 2021
³ Health Ministry, 30 November
⁴ Internally Displaced People (IDPs), CONASUR, December 2021
⁵ Government, December 2021



Sources: WFP, OCHA, UNHCR, CONASUR.

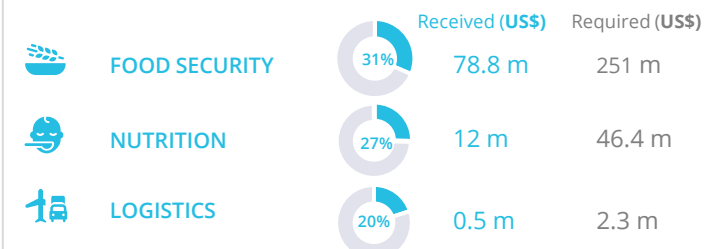
The designations employed and the presentation of material in the map(s) do not imply the expression of any opinion on the part of WFP concerning the legal or constitutional status of any country, territory, city or sea, or concerning the delimitation of its frontiers or boundaries.
© World Food Programme 2022.

INTERNAL DISPLACEMENT FIGURES 2021



SOURCE: UNHCR, JAN 2022

WFP-LED AND SUPPORTED CLUSTERS



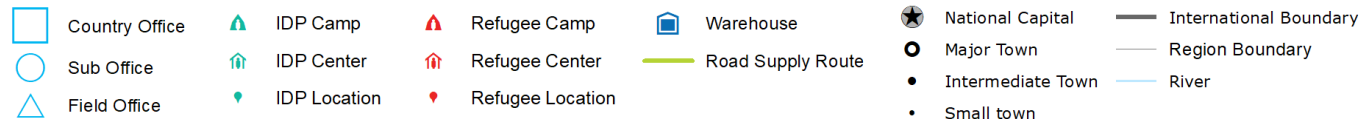
SOURCE: FTS, DEC 2021

UN HUMANITARIAN AIR SERVICES (UNHAS)



SOURCE: WFP, DEC 2021

CH Food Security Classification June - August 2022 (Projection)



SAVING LIVES
CHANGING LIVES

WFP LEVEL 3 EMERGENCY

Level 2 Emergency since **10 May 2019**
part of the Central Sahel Level 3 Emergency since **09 September 2019**



SITUATION REPORT and COUNTRY BRIEF

