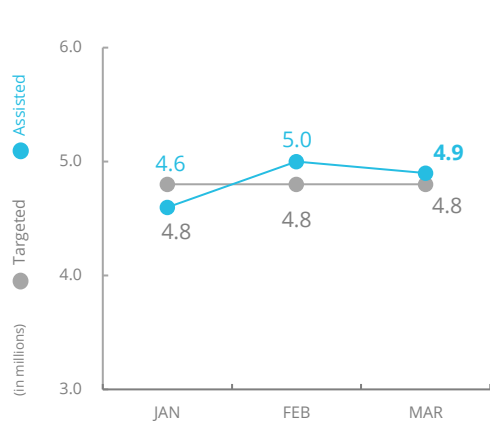


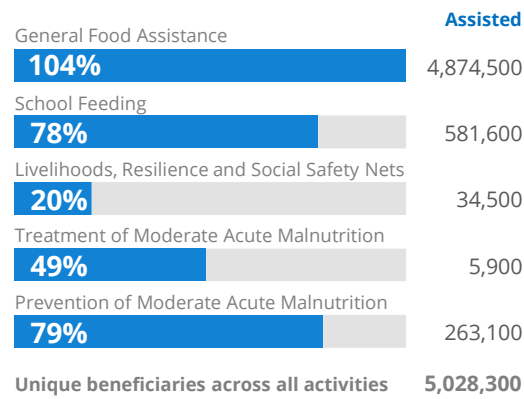
PEOPLE ASSISTED

General Food Assistance



OPERATIONAL PROFILE

By Activity (March)



SOURCE: WFP, APR 2021

PEOPLE FOOD INSECURE



SOURCE: WFP 2020 Food Security and Livelihoods Assessment.

FUNDING

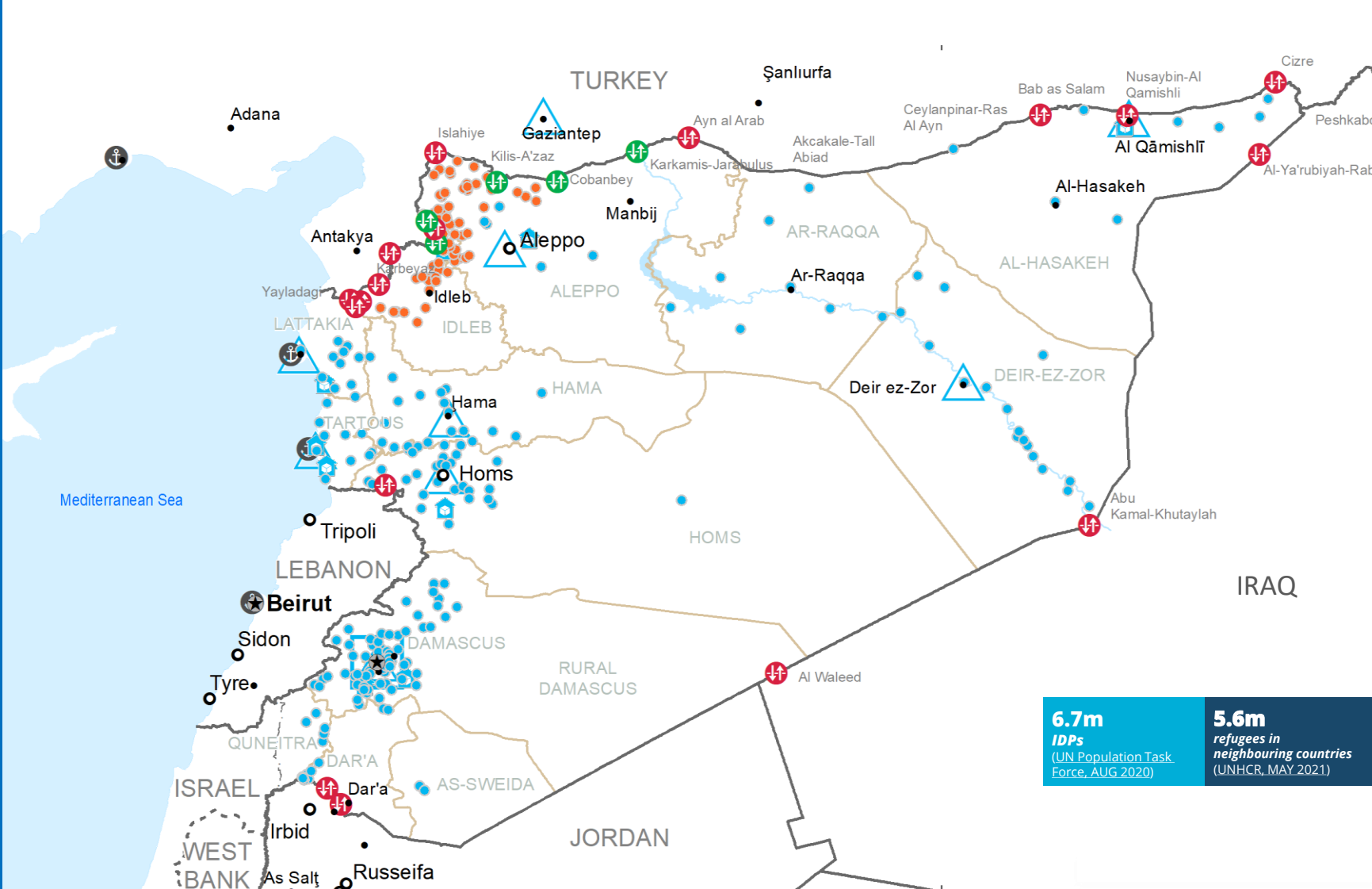
Syria Interim Country Strategic Plan (ICSP)

June - November 2021
US\$515.2m
 Net funding requirements

2021 LEVEL 3 RESPONSE
 Requirements: US\$1,269m
 Funded: US\$418.9m



SOURCE: WFP, 21 MAY 2021

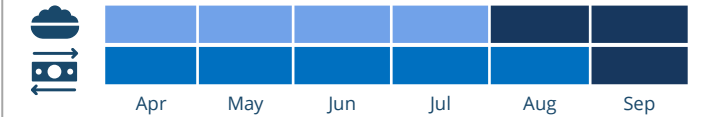


AVERAGE MONTHLY FUNDING REQUIREMENTS

(6 Months - US\$)

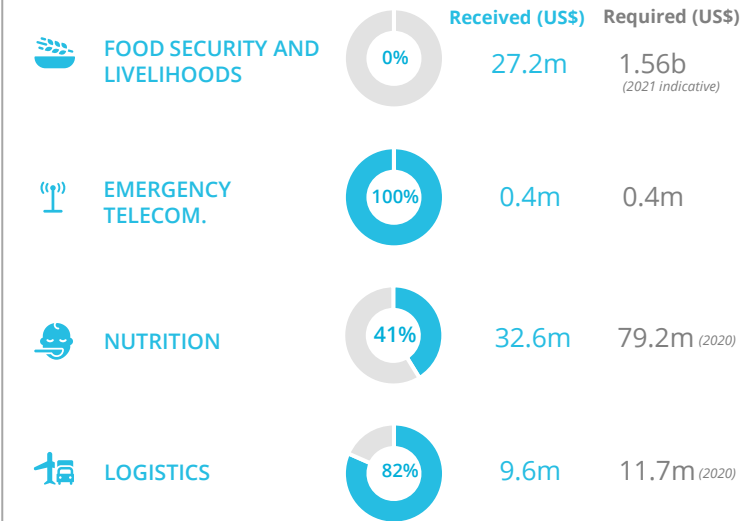


EXPECTED SHORTFALLS



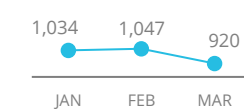
SOURCE: WFP, 12 APR 2021

WFP-LED AND SUPPORTED CLUSTERS

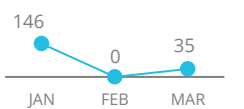


SOURCE: CLUSTERS, MAY 2021

Trucks Transhipped from Turkey



Relief Goods Stored (m³)



SOURCE: WFP, APR 2021

- Country Office
- Warehouse
- National Capital
- International Boundary
- Field Office
- Open Border Crossings
- Major Town
- Governorate Boundary
- Open Border Crossings with Restrictions
- Intermediate Town
- Armistice Boundary
- Closed Border Crossings
- Road Supply Route
- Port
- Food Distribution Points (FDPs) March 2021
- Regular Deliveries
- Cross-Border Deliveries

Approx. 50% of total FDP are displayed on this map.

Sources: WFP, OCHA, GLSCC, UNGIWG, UNHCR, Geonames
 The designations employed and the presentation of material on this map do not imply the expression of any opinion whatsoever on the part of WFP concerning the legal or constitutional status of any country, territory, city or sea or concerning the delimitation of its frontiers or boundaries.
 © World Food Programme 2020

