





Intisar preparing her 'mouneh', a type of Levantine food provisions, to last her the winter season.
Photo: WFP/Mustapha Ghabris


WFP LEBANON


SITUATION REPORT – December 2022

IN NUMBERS

 **3,563,300** people in need of assistance

 **1.8 m** people assisted in December 2022

 **USD 22m** cash-based transfers made

 **4,500 MT** of food distributed

SITUATION UPDATE

- The price of the food Survival Minimum Expenditure Basket (SMEB) reached LBP 1.1 million per person/month in November, a 2 percent increase from October. The full SMEB, including food and other essential needs, amounted to LBP 5.6 million for a family of five in November, a 3 percent increase from October.
- Lebanon's annual inflation rate eased to a 15-month low of 142 percent in November, down from 162 percent in October, according to the Central Administration of Statistics. This was due to softer rises in food prices compared to previous months. Recent currency fluctuations however are expected to drive higher prices of food and other basic commodities, including fuel. The value of the Lebanese Pound in the informal market averaged LBP 40,000 to the dollar in November, but declined to a record-low of LBP 48,000 to the dollar in December.

WFP RESPONSE

- The new cycle of cash assistance for refugees will start in January 2023. Eligibility announcements were shared with beneficiaries in November, informing them of their assistance status for 2023. Households who were not selected for assistance were able to submit claims on their eligibility status through the Grievance Redress Mechanism (GRM). The claims are being analysed jointly by WFP and UNHCR, and families will be informed of their assistance status by February 2023.

HIGHLIGHTS

- Basic living conditions for Syrian refugees are in continuous decline. In 2022, 90 percent of Syrian refugee families were in need of humanitarian assistance to survive, with the most basic needs out of reach due to inflation (2022 Vulnerability Assessment of Syrian Refugees in Lebanon, VASyR). *Joint UNHCR, UNICEF, WFP news release and social media package.*
- According to the first Lebanon Integrated Food Security Phase Classification (IPC), 700,000 refugees (46 percent) and 1.29 million Lebanese (33 percent) were found to be food insecure between September and December 2022. *The full report can be accessed [here](#).*

Cash Assistance for Refugees

- In December, WFP provided unconditional cash assistance to 1,048,500 refugees through 3 cash-based modalities:
 - Multipurpose Cash* for food and other essential needs redeemable at ATMs or MTOs: 230,800 Syrian refugees
 - Food e-cards* for food needs redeemable at WFP-contracted shops: 355,200 Syrian refugees
 - Cash-for-Food* for food needs redeemable at ATMs, MTOs, and shops: 457,200 Syrian refugees and 5,300 refugees of other nationalities.

Economic Crisis Response for Lebanese

- WFP supported 289,900 vulnerable Lebanese individuals (76,000 households) with food parcels in December as part of its response to the ongoing economic crisis. Starting January 2023, and following endorsement of partner proposals for the economic crisis response, WFP will cooperate with 5 partners in 2023 for the implementation of its programme across all 26 districts in Lebanon.

School Meals

- In December, 65,000 refugee and Lebanese students in 105 schools received daily snacks through WFP's School Meals programme. An additional 4,8000 students received cold meals (sandwiches and fruit/vegetables) prepared by women in 6 schools as part of the School Kitchens initiative.

WFP RESPONSE

- WFP and hospitality company Sodexo undertook a joint mission to test food safety and quality practices for the School Meals programme. Following recommendations from the mission, WFP hosted a food safety training workshop for partners to build their capacity on food quality and monitoring at schools and warehouses. WFP also completed the rehabilitation and installation of solar panels at 3 school kitchens in Akkar, Tyre, and Zahle. This will help extend cold storage of foods and increase production of cold meals.



Livelihoods

- In December, 3,000 Syrian and Lebanese individuals participated in asset creation and capacity building projects and received cash transfers that benefitted a total of 15,500 people.
- In 2023, WFP will aim to increase the productivity of farmers in targeted value chains and provide them with trainings to enhance their skills and techniques used in farming. WFP will also continue supporting 20 small to medium enterprises through cash grants, targeting 3 main objectives in the food system: access to raw material, substitution of food imports, and access to energy.



Support to Social Protection Programmes

- WFP assisted 356,200 Lebanese individuals (63,600 families) through the National Poverty Targeting Programme (NPTP). The additional of 10,000 more families is pending deduplication with the Emergency Social Safety Net (ESSN).
- WFP and the World Bank initiated a joint due diligence review of the NPTP and the ESSN programmes to identify their best practices and strengthen the design of existing systems. The desk review, process mapping and beneficiary interviews are ongoing, with results expected by March 2022.



MONITORING

- 373 Syrian families receiving cash assistance were visited and interviewed in December. Findings show that the average time it took them to reach ATMs or MTOs increased from 21 minutes in November to 25 minutes in December. Meanwhile, the average two-way cost to redeem assistance also increased from LBP 58,000 to LBP 70,000 during the same time period, following hikes in fuel prices.
- Alongside the existing network of ATMs and contracted shops, refugee and Lebanese beneficiaries receiving cash assistance were able to redeem their entitlements at 40 Money Transfer Operators (MTOs) across Lebanon. Crowding was reported at only 11 percent of MTO stores. Both refugee and Lebanese beneficiaries reported high satisfaction rates (9.3 out of 10) with their experience withdrawing at MTOs. Staff and owners at MTOs also expressed their satisfaction with WFP's programme implementation.



FOOD SECURITY AND AGRICULTURE SECTOR

- Between January and November 2022, 38 sector partners including WFP assisted 2.2 million people living in Lebanon: 920,000 Lebanese and 1.2 million Syrian refugees. The Food Security and Agriculture Sector needs and response plan for 2023 includes 3.08 million people found eligible for food and agricultural livelihoods assistance. For 2023, partners aim to target 2.97 million people, and require USD 1.3 billion to deliver needed assistance.



GENDER, PROTECTION & ACCOUNTABILITY TO AFFECTED POPULATIONS (AAP)

- WFP received 55,700 claims in December through its call centre, with 60 percent received from women. 37 percent of claims were to request assistance, 47 percent to request information, and the rest to provide feedback, express concerns, or relay protection issues. 98 percent of claims were resolved by the end of December and 13 callers expressed positive feedback on the implementation of WFP programmes and professionalism of WFP staff.
- To mark the International Day of Persons with Disabilities, WFP disseminated disability awareness videos, held a Twitter live chat on working at WFP as a person with disability, and presented its disability inclusion work at a WFP webinar organized by the regional office. Meanwhile, various awareness sessions for partners took place in December, including on social norms, gender-based violence, as well as sexual orientation, gender identity, gender expression and sex characteristics.



SUPPLY CHAIN & RETAIL

- WFP awarded contracts for 3 suppliers in December for the purchasing of food for the new basket composition in support of in-kind distributions under the Lebanese crisis response
- In preparation for the new targeting results for cash assistance to refugees, WFP conducted a gap analysis in December to ensure retail coverage for people redeeming their assistance at shops. As a result, the large supermarket chain "Le Charcutier" was contracted, covering critical areas and adding 18 shops to WFP's retail network. In addition, WFP evaluated existing contracts to align with the new needs for 2023.



ADVOCACY, COMMUNICATIONS & PARTNERSHIPS

- In December, WFP posted donor visibility material and disseminated media messages on Twitter, highlighting the impact of WFP's assistance on beneficiaries. In addition, Twitter videos were posted on contract farming (link [here](#)) and World Soil Day (link [here](#)).
- In December, WFP organized a multi-donor field visit to a school supported by WFP's school meals programme in Zahle. The visit included representation from the Embassy of France, the Embassy of Norway, and the Italian Agency for Development and Cooperation in Lebanon. The delegation had the opportunity to see the implementation of the School Meals programme, including the School Kitchens and snack distributions.



FUNDING OVERVIEW

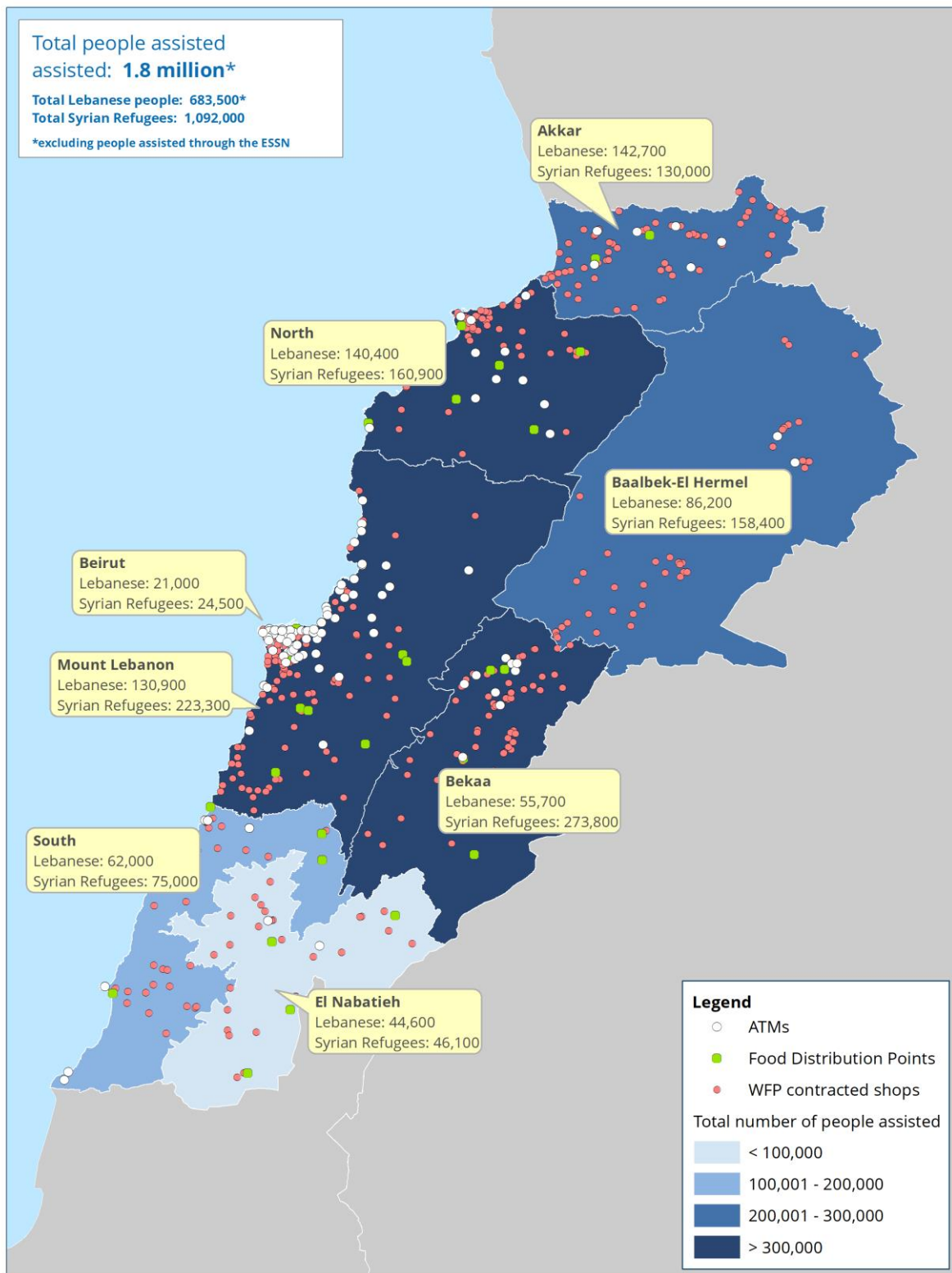


NET FUNDING REQUIREMENTS JAN 2023 - JUN 2023
US\$ 463 million



Lebanon

WFP Cash and In-kind Assistance for Refugees and Lebanese – December 2022



Donors

Australia, Austria, Canada, Cyprus, European Union, France, Germany, Ireland, Italy, Japan, Lebanon's Presidency of the Council of Ministers, Lebanon Humanitarian Fund, Norway, Poland, Private Donors, Republic of Korea, Russian Federation, Switzerland, UN CERF, United Kingdom, USA