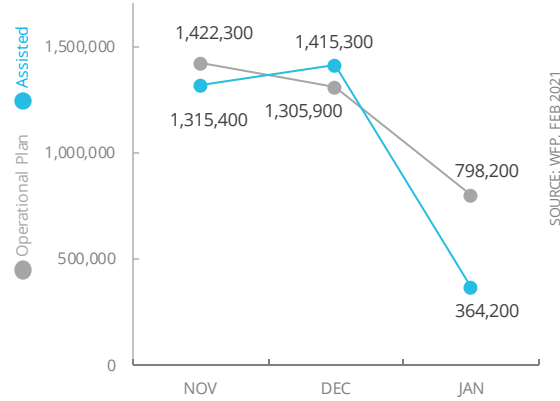


Democratic Republic of Congo

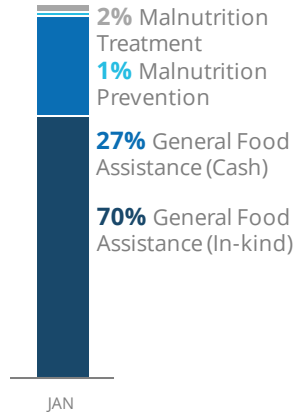
PEOPLE ASSISTED

DR Congo Interim Country Strategic Plan



OPERATIONAL PROFILE

By Activity



COVID-19 OPERATIONAL IMPACT

Status WFP Response adjusted

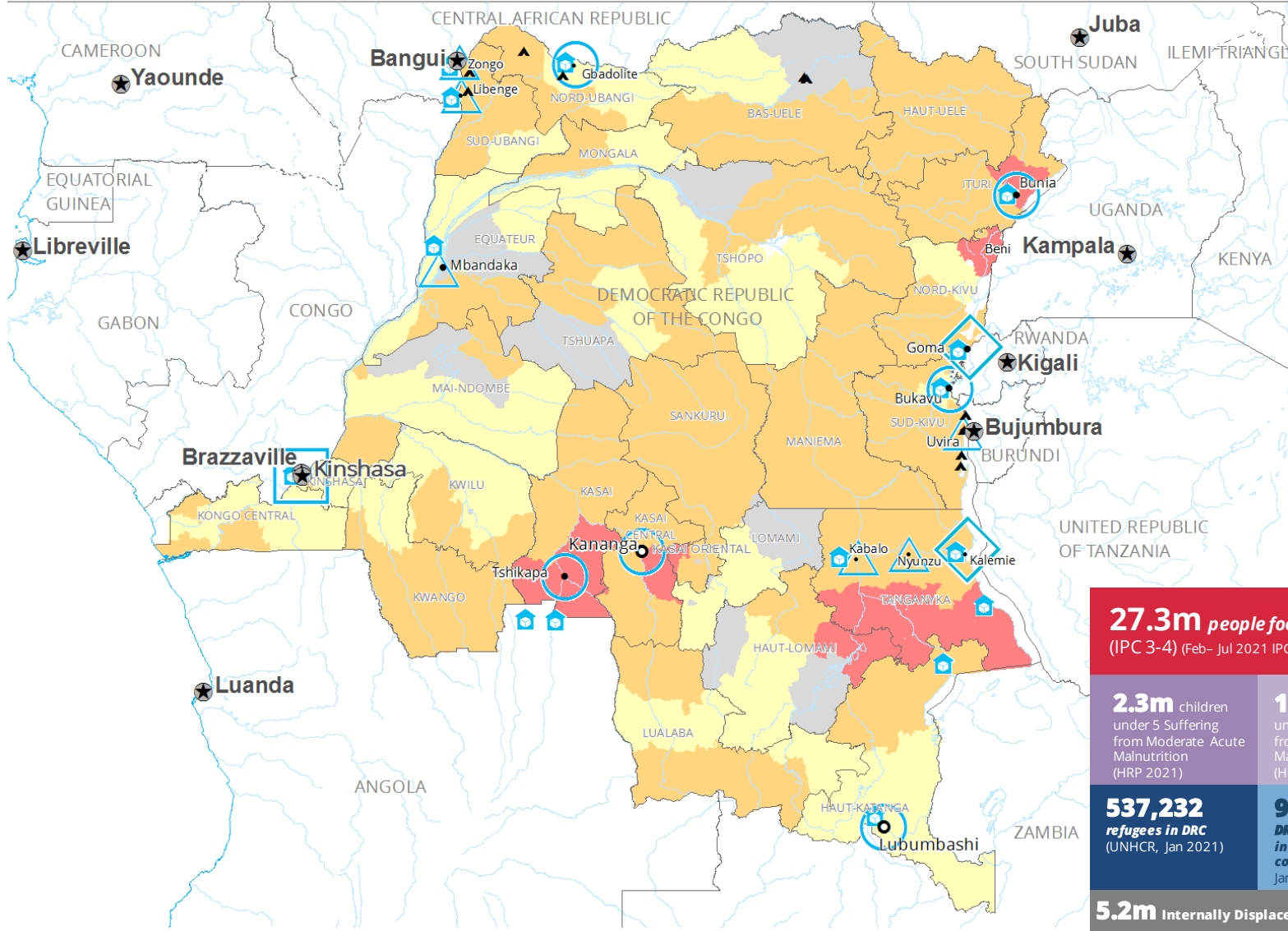
- Extended distribution timelines
 - Crowd control and social distancing measures at distribution sites
 - Mandatory hygiene measures at distribution sites
 - School feeding through take home rations
- Legend: ✔ Ongoing ! Partially Suspended ✘ Suspended

FUNDING

DR Congo Country Strategic Plan (CSP)
March 2021- August 2021

Net funding requirements
US\$177m

2021 LEVEL 3 RESPONSE
Requirements US\$662.5m



27.3m people food insecure
(IPC 3-4) (Feb- Jul 2021 IPC projection)

2.3m children under 5 Suffering from Moderate Acute Malnutrition (HRP 2021)

1.1m children under 5 Suffering from Severe Acute Malnutrition (HRP 2021)

537,232 refugees in DRC (UNHCR, Jan 2021)

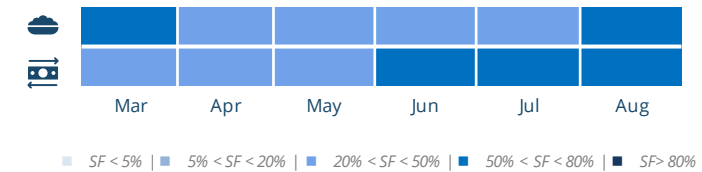
947,081 DRC refugees in neighboring countries (UNHCR, Jan 2021)

5.2m Internally Displaced People (HRP 2021)

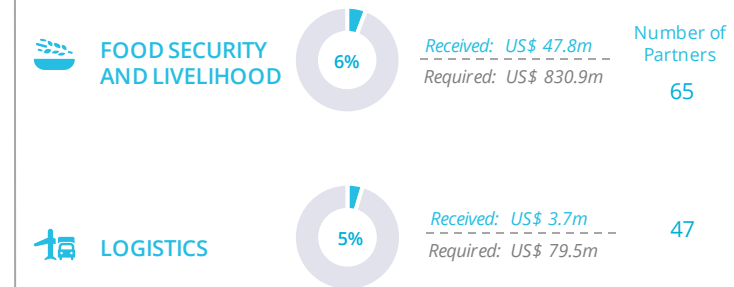
AVERAGE MONTHLY FUNDING REQUIREMENTS (US\$)

Food: 31.1m Cash: 17.4m

EXPECTED SHORTFALLS



WFP-LED AND SUPPORTED CLUSTERS



WFP LEVEL 3 EMERGENCY



Sources: WFP, UNGWG, GAUL, GLCSC, OCHA, UNHCR, IPC.
The designations employed and the presentation of material in the map(s) do not imply the expression of any opinion on the part of WFP concerning the legal or constitutional status of any country, territory, city or sea, or concerning the delimitation of its frontiers or boundaries.
© World Food Programme 2020.