



# WFP PALESTINE EMERGENCY RESPONSE

## Situation Report 23

08 June 2024

### HIGHLIGHTS

- WFP has increased deliveries to the north of Gaza, resulting in a modestly improved situation in the North. However, since the Rafah incursion, deliveries to the south and central areas have plummeted, because of the limited flow of humanitarian assistance and escalation in conflict. We fail to meet growing needs.
- Despite Karam Abu Salem /Kerem Shalom crossing point being open, WFP continues to face significant impediments to move food safely into and within Gaza due to damaged infrastructure, insecurity, and access restrictions.
- Despite these obstacles, WFP has been able to reach an estimated 1 million people across Gaza in May but was forced to reduce rations due to access constraints and restrained stock availability. WFP is obliged to do more with less to ensure that 1.1 million targeted people are assisted each month with rations that cover their food needs for at least 10 days.
- Until a ceasefire is implemented, WFP urgently calls for regular humanitarian access, fully open borders, multi-sectoral and strategically balanced responses and efforts to restore law and order to ensure an effective humanitarian response.

### MAY IN NUMBERS



#### 1.1 million people

assisted with general food assistance across Gaza and the West Bank.



#### 740 WFP Trucks

delivered carrying 11,261 mt of food into Gaza in May, bringing the total to 6,067 trucks carrying around 192,286 mt since the start of the crisis.



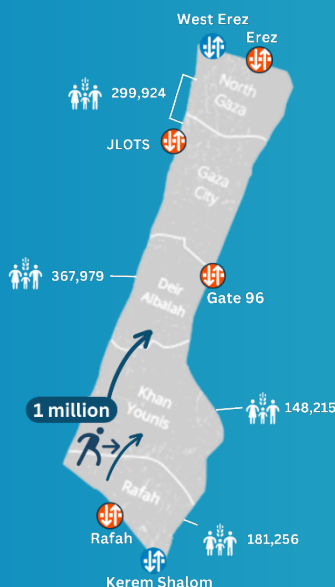
#### 2024 funding status

Needs resourced	Net funding requirement
<b>USD 191.6 M</b>	<b>USD 325.9 M</b>
	<i>By end of 2024</i>



#### 1.1 million

affected people targeted monthly by WFP emergency assistance in Gaza.



### JUNE 2024 UPDATE

- Two thirds of the population are crammed into one fifth of Gaza. The ongoing conflict forces continuous displacement, which in turn disrupts WFP's ability to deliver effectively. People have been uprooted multiple times, seeking shelter in overcrowded areas that lack the very basic needs.
- Aid coming through Karam Abu Salem/ Kerem Shalom crossing, which is operating at limited capacity, has increased slightly, but challenges limit organizations from receiving the necessary volumes of aid to respond to mounting needs.
- West Erez crossing is operational, while Erez is not, due to escalation of fighting in the area. Rafah remains closed.

*Beneficiaries reached with General Food Assistance in May 2024. Figures are preliminary and subject to change upon confirmation.*

### SITUATION UPDATE

- Despite improvements seen in May in **Northern Gaza** due to increased access, there are no fresh vegetables in the markets, and if available, their quality is very poor. Overall food prices are exorbitant. In **Deir al Balah and Khan Younis**, although food availability has increased, it remains too expensive for the average person to afford.
- Challenges persist in terms of access to clean water, healthcare, sewage, and rubble blocking movements.
- WFP can do little for the people still in **Rafah**. Our main warehouse in Rafah, currently in a warzone, has been emptied. Most partners and other humanitarian agencies have been displaced.

### WFP OPERATIONS



#### General Food Assistance (GFA) – May 2024

- In the month of May, WFP reached an estimated **1.1 million vulnerable people\*** with in-kind and cash-based general food assistance across Gaza and the West Bank. In **Gaza Strip alone**, WFP reached nearly **1 million people**.
- In the Gaza Strip, WFP distributed around **260,500 food parcels** enough to last for 10 days for **785,700**

*\*The total beneficiaries figure accounts for overlap between people receiving more than one type and duration of assistance. Please note these figures are preliminary and subject to change upon confirmation.*

**people** – internally displaced persons (IDPs) in UN-designated shelters, informal camps and within host communities – and over **1.9 million bread parcels**.

- In May, WFP provided around **9.3 million hot meals** through a network of 93 community-kitchens. 42 percent of hot meals were distributed in Deir al Balah, and the rest in Khan Younis and Rafah.
- In May, **18,865 pregnant and breastfeeding women and 46,229 children under five** received Lipid-based nutritional supplement (LNS) as complementary feeding assistance to meet their increased nutritional needs. LNS distributions stopped completely in Rafah and Gaza City due to lack of stock.
- In the **West Bank**, WFP provided **145,620 people with their cash-based transfers** and **5,041 people** received quarterly in-kind rations.

### Supply Chain

- In June so far, WFP delivered 578 trucks carrying at least 5,000 pallets of food and non-food items into Gaza through West Erez and Karam Abu Salem/Kerem Shalom including cargo **on behalf of humanitarian partners**. Of those, 325 trucks carried at least 5,000 mt of WFP aid.
- Since the onset of the crisis and until 07 June, **WFP delivered 6,086 trucks carrying around 192,574 mt** of food into Gaza.

provision, in Khan Younis to support the high number of displaced people.

- The sector is working with partners to better map out and coordinate distribution in the northern Gaza following increased food supplies entering through West Erez.
- Through joint efforts with WASH and Health Clusters, food security partners are being provided with clean water supply to support community kitchens and sensitized on the importance of safe food handling and storage to prevent foodborne disease and ensure food safety.

### Logistics Cluster

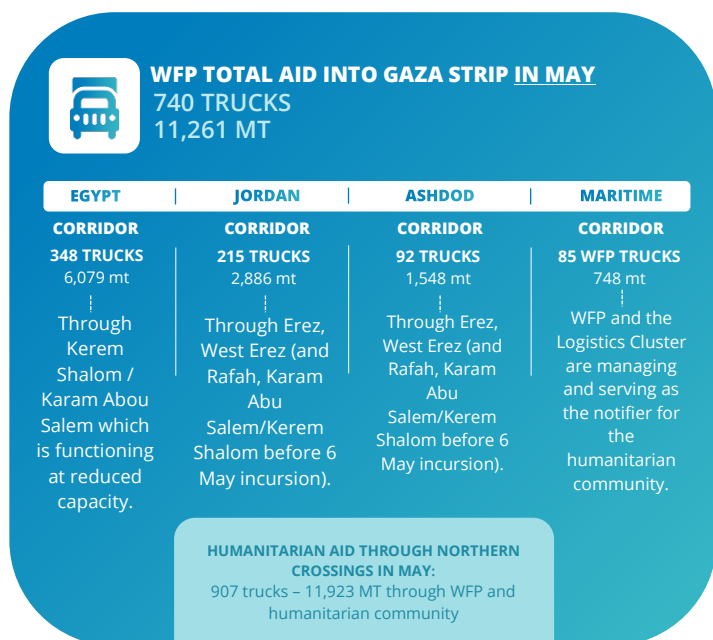
- The Logistics Cluster (LC) secured an additional warehouse in Deir er Balah, providing 1,700 m<sup>2</sup> of common storage space for humanitarian cargo. In May, 1,079 m<sup>3</sup> of cargo from seven organizations were moved to common warehouses.
- The LC supported supply chains in Egypt and Jordan, installing Temperature-Controlled Units (TCUs) to protect temperature-sensitive cargo. An additional Mobile Storage Unit (MSU) was installed in Al Arish, bringing the total to 17 near Al Arish and Rafah crossing.
- Jordan convoys ensured limited supplies entered Gaza, while Egypt operations paused for 21 days due to insecurity. In May, ten convoys dispatched 295 trucks for ten humanitarian partners. All the convoy information is available on the [interactive dashboard](#).

### Emergency Telecommunications Cluster (ETC)

- Internet connectivity in the Gaza Strip faces significant challenges, particularly in Deir er Balah, where most people and humanitarian responders have relocated.
- Escalated hostilities have caused network outages due to infrastructure damage, fuel shortages, and limited operational towers. Critical telecommunications processes and importations remain lengthy and severely restricted.

### ACCOUNTABILITY TO AFFECTED POPULATIONS

- WFP's self-registration link to improve data collection and beneficiary management, attracted **205,491 new registrations** in May, 556,332 since its launch.
- WFP's **inter-agency hotline** available for people requesting and inquiring about humanitarian assistance answered **39,019 calls** in May, out of 39,533 cases logged.



## CLUSTERS AND COMMON SERVICES

### Food Security Sector

- The sector is working with partners to scale up their food security response efforts, including distribution of food parcels and fresh produce as well as bread