



World Food Programme

SAVING LIVES
CHANGING LIVES



WFP Lebanon | Situation Report

May 2024

OPERATIONAL CONTEXT

The fourth Integrated Food Insecurity Phase Classification (IPC) analysis, conducted in March 2024, projects a deterioration in the food security situation in Lebanon. The number of food insecure people is expected to increase from 19 percent of the population in March 2024 to 23 percent between April and September 2024, equivalent to 1.26 million people. The IPC analysis includes the Lebanese population, Syrian refugees, Palestine Refugees from Lebanon and Palestine Refugees from Syria. This deterioration is projected in spite of the stabilized informal exchange rate, driven by the persistent political and socio-economic crises, rising inflation, the projected reduction of humanitarian assistance to all population groups, as well as the continuation of the conflict along Lebanon’s southern border that has caused protracted internal displacement.

The monthly cost of the full Survival Minimum Expenditure Basket (SMEB) monitored by WFP remained stable between February and March 2024, standing at LBP 36.3 million (US\$ 402) for a family of five. The cost of the food basket alone remained unchanged at LBP 3.1 million (US\$34.2) per person per month in March 2024. On a monthly basis between April and March 2024, overall inflation reached 1.7 percent, while food inflation stood at 1.2 percent. The exchange rate on the informal market remained stable at LBP89,700/USD.

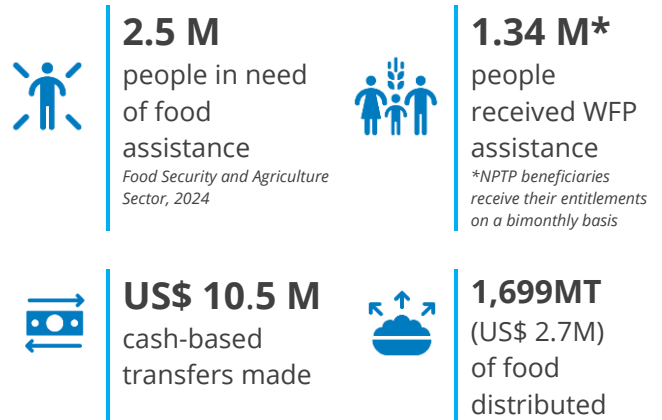
In line with its Country Strategic Plan (CSP) for 2023–2025, WFP remains focused on the response to Lebanon’s economic and refugee crises, as well as the additional needs linked to the escalating security situation in South Lebanon since October 2023. In May, WFP supported around 709,100 Syrian refugees and over 627,600 Lebanese nationals to meet their essential food and other basic needs.

Due to funding constraints and following updated retargeting, WFP had to cut assistance to both refugees and Lebanese by up to 39 percent since November 2023.

FUNDING OVERVIEW

	% Funded	Available	Required
Country Strategic Plan (2023-2025)	23%	US\$ 730 M	US\$ 3.15 B
2024 Total Requirements	23%	US\$ 224 M	US\$ 960 M
Net Funding Requirements (Jun-Nov 2024) US\$ 290.2 M			

WFP ASSISTANCE IN NUMBERS - MAY 2024



HIGHLIGHT: WFP RESPONSE IN SOUTH LEBANON

Since the onset of the conflict along the southern border, over 94,000 individuals have been internally displaced. 1,600 individuals are currently residing in shelters, while the rest are staying with families in secondary residences or sub-par dwellings improvised as shelters. Security challenges in the South also led to partial or full closure of 72 public schools, affecting around 20,000 enrolled students.

In addition to its regular programmes in the South, WFP supported 55,500 people affected by the conflict in May, bringing to total number of people reached by WFP as part of this emergency response to 163,300 individuals since October 2023.

In May, WFP distributed one-off in-kind food assistance to 19,700 affected Lebanese people, with each parcel covering 62% of the basic food needs of one person for one month. 24,300 refugees received their second round of emergency cash assistance. WFP also continued to provide daily in-school snacks to 11,500 affected students in 14 schools hosting displaced children, in addition to WFP’s regular school feeding programme.

In coordination with the Ministry of Social Affairs, WFP is planning to provide the second round of emergency cash assistance to over 55,000 vulnerable Lebanese in June, leveraging the national social safety net system.

WFP RESPONSE



Cash Assistance for Refugees

In May, WFP provided cash assistance to 626,500 Syrian refugees (111,600 households) through three modalities:

- Multipurpose Cash for food and other essential needs redeemable at ATMs or money transfer agents: 251,000 Syrian refugees.
- Cash-for-Food for food needs redeemable at ATMs, money transfer agents, or shops: 170,100 Syrian refugees.
- Food e-cards for food needs redeemable at WFP-contracted shops: 205,600 Syrian refugees.

Economic Crisis Response for Lebanese

WFP reached 146,100 Lebanese individuals (35,800 households) with in-kind food parcels in May. In parallel, WFP launched the second phase of the retargeting exercise aimed at assessing the vulnerability of 13,000 households to determine their eligibility to continue receiving in-kind food assistance. As of May 2024, 12,150 households have been assessed, while 2,000 additional households, referred through the WFP call center and other organizations, will be assessed in June to determine eligibility for food assistance.

School Meals

In May, the School Meals programme reached a total of 96,160 students in 189 schools. Of these, 84,870 students (39,090 students in the morning shift and 45,780 students in the afternoon shift) were reached through the in-school snacks modality and received around 1,500,000 in-school snacks. The other 11,290 students were reached with more than 175,500 cold meals (sandwiches + fruits/vegetables) prepared by the 102 volunteer mothers at nine school kitchens through the school kitchen modality.

Support to Social Protection Programmes**

In May 2024, the ESSN transfer cycle assisted 93,600 households with a transfer value of USD 10.3 million, reaching 403,700 people. Families enrolled in the NPTP receive their entitlements on a bi-monthly basis.

In coordination with the Government of Lebanon, as of May, WFP has completed around 80% of the recertification exercise to assess the eligibility of households to continue receiving NPTP cash assistance in 2024. This represents 57,900 households visited out of 75,300 planned households. Data collection did not proceed as planned in some Social Development Centers (SDCs) in southern Lebanon due to the prevailing security situation. The Ministry of Social Affairs (MOSA) and WFP are currently discussing alternative means for visiting these households.

Livelihoods

In May, WFP Lebanon and the WFP Innovation Accelerator hosted an Inception Workshop for the Climate Adaptation Innovation Acceleration Programme (CAIAP), funded by the Adaptation Fund. CAIAP aims to test and pilot innovative solutions for climate adaptation challenges.

In collaboration with Care International, a capacity assessment for selecting 100 greenhouse farmers will be completed by mid-June 2024. Concurrently, in collaboration with Relief International, WFP is providing technical training for small-scale dairy producers and supported 178 livestock farmers with cash for training.

Nutrition

Pilot screening for malnutrition in children under 5 and pregnant and lactating women was initiated at in-kind and cash distribution points during May. A total of 108 children and 28 women were screened, and 2 were referred to public health centers for treatment.

GENDER & SOCIAL INCLUSION, PROTECTION & ACCOUNTABILITY TO AFFECTED POPULATIONS (AAP)

In May, the WFP call center handled 40,400 claims, with a 95% resolution rate within the same month. The majority of callers (74%) were Syrian refugees, and around 8.5% identified as people with disabilities. WFP experienced a surge in calls from families asking to be reconsidered for in-kind assistance after being discontinued, from 690 calls in April to 1,760 in May. Many callers as it was the main source of food in their homes. Some said that health issues or disabilities did not allow them to provide for their family, highlighting the vital nature of assistance for their survival.

The call center managed 579 protection cases, with 437 directly referred by operators to protection partners. Legal protection cases rose from 109 to 221 due to new challenges regarding Syrian refugees' legal registration and documentation. WFP continues to strengthen partnerships with protection-mandated agencies, such as the Danish Refugee Council, Makhzoumi foundation, Himaia, International Rescue Committee (IRC), with the objective of improving referral capacity to specialized agencies and improve the service in response to protection related claims. To increase awareness of assisted families on protection risks, their rights and existing reporting and referral mechanisms, WFP developed a targeted awareness curriculum. The awareness activities will be carried out by WFP's cooperating partners and will include key messages on Gender Based Violence (GBV), Protection from Sexual Exploitation and Abuse (PSEA), child protection and self care.

To further mainstream inclusion of people living with disabilities, WFP signed a memorandum of understanding with the Ministry of Education and Higher Education (MEHE) and the United Nations Children's Fund (UNICEF) to pilot the expansion of the School Meals Programme to private free schools hosting the Dirasa programme in 10 schools across Lebanon. The Dirasa programme targets out-of-school children, including children with disabilities with disabilities, for reintegration to the education system. Overall, 25,419 households receiving WFP assistance in May reported disabilities.

MONITORING & ASSESSMENTS

WFP's on-site post-distribution monitoring of cash redemption points in April 2024 showed acceptable waiting time for Syrian refugees and Lebanese at both ATMs and Money Transfer Operators (MTOs). From October 2023 to April 2024, satisfaction of Syrian refugees with the cash assistance programme significantly decreased for all three modalities. Dissatisfied individuals noted that the assistance was insufficient to afford food. Similarly, satisfaction among Lebanese families with the NPTP assistance dropped from 8.7 to 7.3 out of 10, primarily due to the move to a bi-monthly disbursement of cash entitlements and the reduction in transfer value.

FOOD SECURITY & AGRICULTURE SECTOR

In April, WFP and 22 sector partners reached 1.63 million refugees and Lebanese people through various forms of assistance: 1.37 million received cash-based transfers, 260,000 received food parcels, and 6,000 received meals. Additionally, 9,550 farmers were supported through agricultural interventions, including 8,792 households benefiting from training and inputs, 713 individuals receiving cash for work/training, and 131 cooperatives and small businesses supported with capacity building. Since January, over US\$ 63 million have been disbursed. Since the beginning of the conflict in the South, partners have distributed over 541,200 daily meals, 37,775 food parcels and Ready-To-Eat meals to displaced individuals, households in unsafe villages, and affected farmers.

ADVOCACY, COMMUNICATIONS & PARTNERSHIPS

In May 2024, WFP met with donors to provide updates and advocate for financial support due to reduced assistance. Deputy Executive Director Carl Skau visited Lebanon on 7-8 May, emphasizing the need to strengthen social safety nets amid the economic crisis and regional tensions. He joined World Bank Managing Director Anna Bjerde, highlighting their partnership, and met with government officials and donors.

On 22 May, WFP and Anita Ohi-Meyer from the German Federal Foreign Office visited Syrian refugee households to emphasize the need for continued support amidst funding cuts. On 28 May, WFP and BMZ's Uta Simon visited Germany-funded projects in North Lebanon, showcasing sustainable development and community empowerment efforts.

KEY CHALLENGES

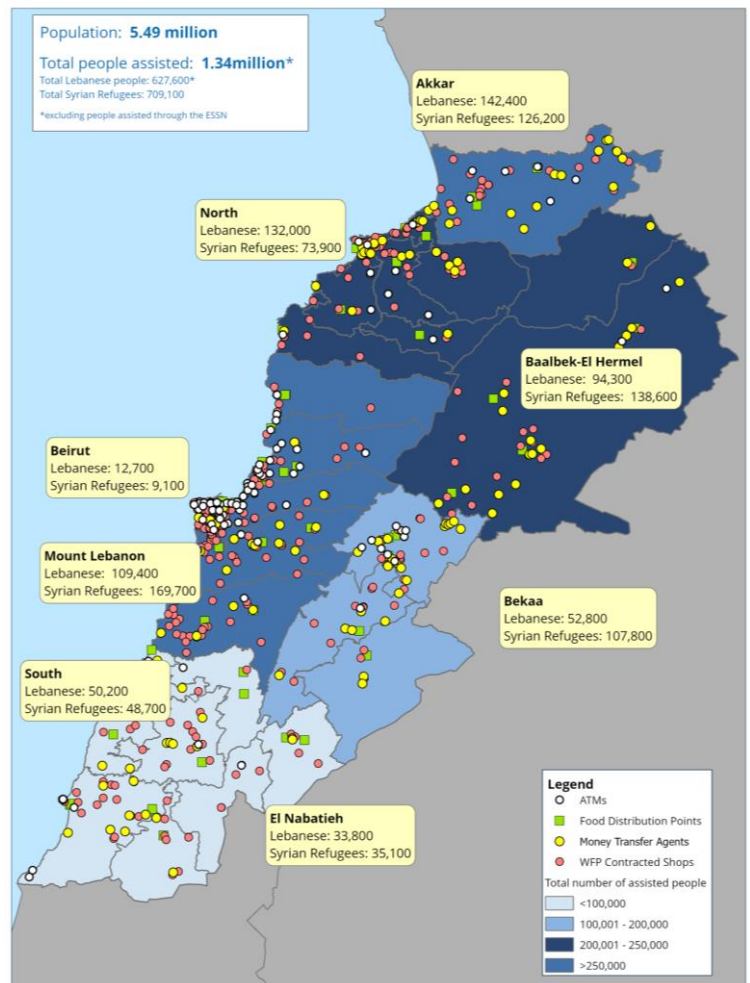
Due to funding shortfalls, WFP is facing significant cuts in assistance, affecting both vulnerable refugee and Lebanese families. These reductions are likely to worsen the overall food security situation, cut off a lifeline for vulnerable families and increase tensions, impacting on social stability. Without additional resources, WFP will have to further reduce its assistance in 2024. WFP remains in close discussions with donors in this regard.

** The NPTP is funded by WFP donors and the ESSN programme is funded through a World Bank loan to the Government of Lebanon, with WFP implementing cash transfers as a service provider.

Donors

Australia, Austria, Canada, European Union, Finland, France, Germany, United Kingdom, Ireland, Italy, Lebanon's Presidency of the Council of Ministers, Malta, Norway, Private Donors, Republic of Korea, Russian Federation, Switzerland, USA

WFP CASH & IN-KIND ASSISTANCE FOR REFUGEES AND LEBANESE - MAY 2024



STORY WORTH TELLING



When Nat Bio was founded in 2018, it started by making and selling Lebanese bread from ancient Einkorn wheat, managing every stage from seed planting to packaging. Seeing the potential in Nat Bio's work, WFP, in partnership with Berytech, intervened with its Food System Challenge, providing specialist equipment and technical advice to enhance manufacturing and broaden their product line.

This partnership led to a 500% revenue increase for Nat Bio, allowing them to offer more products and improve cost control and efficiency. The number of farmers supplying Einkorn wheat to Nat Bio grew from six to twenty-three, strengthening the community network. With the expansion of the bakery's market presence from 13 to 25 points of sale, five new staff members were hired. This partnership showcases WFP's significant contribution to sustainable food systems and regional businesses.