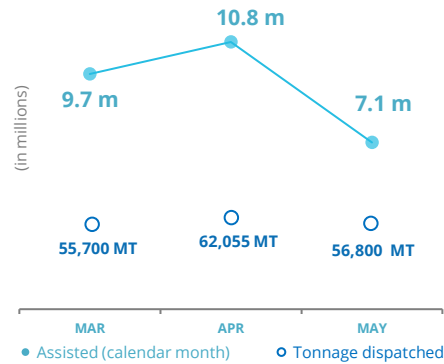


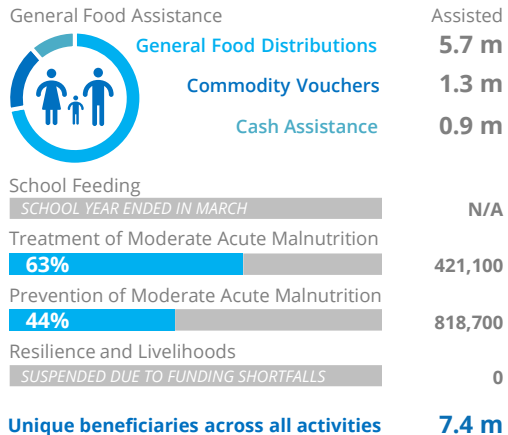
PEOPLE ASSISTED & MT DISPATCHED

General Food Assistance (GFA)



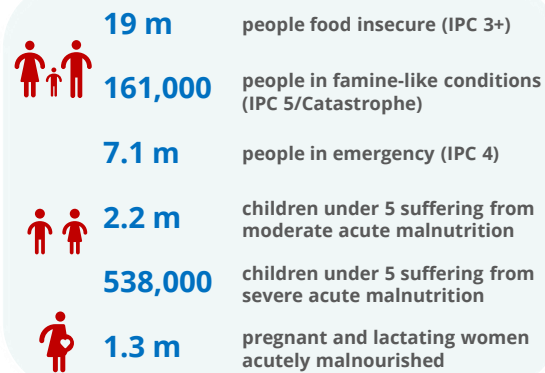
OPERATIONAL PROFILE

By Activity (May)



PEOPLE IN NEED

2022 IPC Projection



FUNDING

Yemen Interim Country Strategic Plan (ICSP)

June - November 2022

US\$1.50 bn

Net funding requirements

2022 RESPONSE

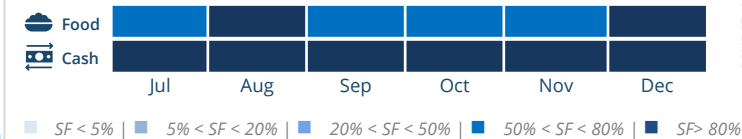
Requirements: US\$1.98 bn
Confirmed Contributions: US\$468.5 m

AVERAGE MONTHLY FUNDING REQUIREMENTS

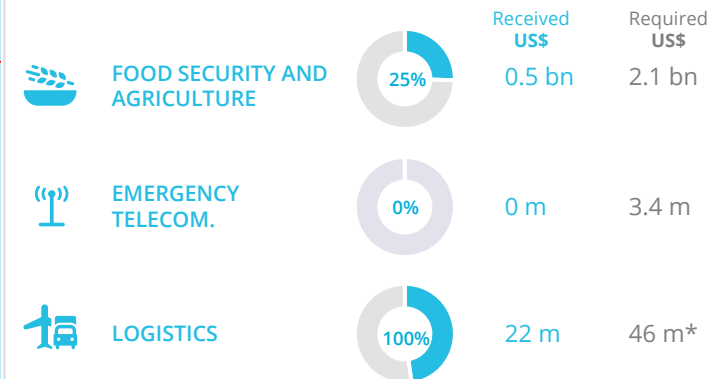
(6 Months - US\$)

Food: 205 m | Cash: 74 m

EXPECTED SHORTFALLS (SF)

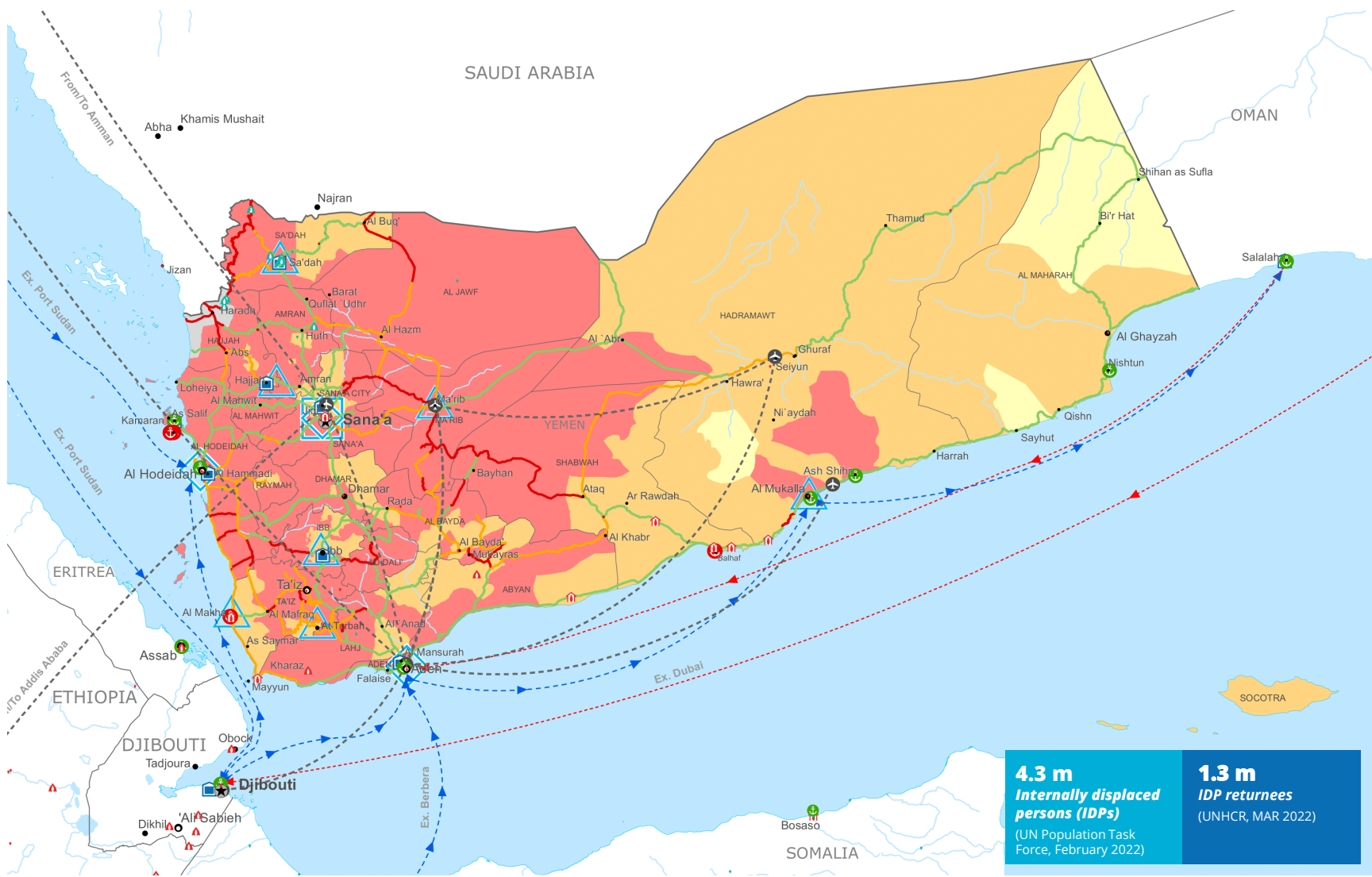
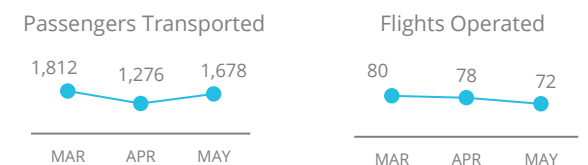


WFP-LED AND CO-LED CLUSTERS



*Based on updated implementation plan

UN HUMANITARIAN AIR SERVICES (UNHAS)



Integrated Food Security Phase Classification (IPC) Projection, June - December 2022



Sources: WFP, UNGIWG, GAUL, GLCSC, OCHA, UNHCR. The designations employed and the presentation of material in the map(s) do not imply the expression of any opinion on the part of WFP concerning the legal or constitutional status of any country, territory, city or sea, or concerning the delimitation of its frontiers or boundaries. © World Food Programme 2022.

WFP EMERGENCY CLASSIFICATION: Corporate Attention



For more information, see WFP Yemen page [here](#)