

WFP PALESTINE EMERGENCY RESPONSE External Situation Report 84

Reporting Period:
1-28 Feb 2026

HIGHLIGHTS

- The regional escalation that commenced on 28 February, immediately disrupted border crossings into Gaza. Prolonged disruptions could reverse food security gains achieved under the October ceasefire. Sustained, predictable opening of all supply chain corridors into Gaza is essential.
- In February, access restrictions on supply from the neighbouring countries had already obliged WFP to halve food rations in Gaza, to preserve stocks. WFP is now prioritizing food deliveries to cooperating partners and bakeries while preparing contingency and prioritization plans, should conditions deteriorate further. Additional access restrictions risk further ration cuts.
- Despite these constraints, WFP reached nearly 940,000 people in February with general food assistance. Activities now integrate early recovery elements where possible, supporting dignity and choice, market and livelihood recovery, and improved dietary diversity. Ongoing market and consumption monitoring will inform future programme strategy.

FEBRUARY IN NUMBERS

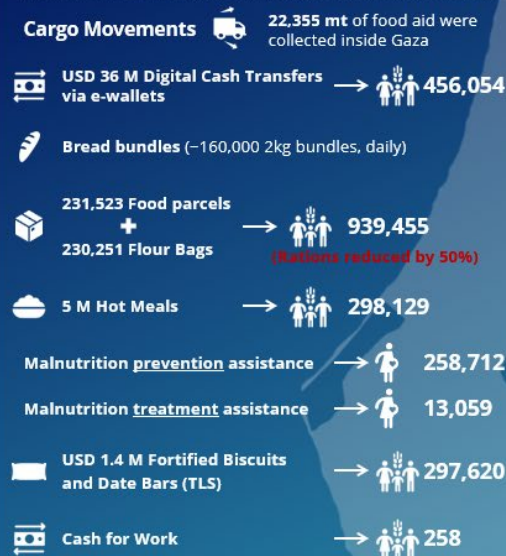
Reporting period 1-28 Feb 2026

PALESTINE

1,654,303 beneficiaries
(2 million planned)

Gaza **1,351,020** (1.6 million planned)

West Bank **303,283** (338,000 planned)



WFP Contributions



Largest Donors



WFP six-month net funding requirements

USD 212 M March - Aug 2026

Figures are subject to change pending final partner reporting for the month. Total beneficiary numbers account for overlap among individuals receiving multiple types of assistance.

SITUATION UPDATE

- Since 28 February, a major regional military escalation has intensified across the region, prompting emergency UN Security Council discussions. Regional security remains fragile as military and diplomatic developments continue to unfold affecting humanitarian supply chains.
- Gaza crossings were initially closed following the escalation. Kerem Shalom (KS) crossing [reopened](#) on 3 March, with limited offloading capacity and restricted fuel entry. If these constraints persist, or crossings close again, rapid depletion of commercial and humanitarian stocks could trigger sharp price increases and further worsen food security conditions.
- In the [West Bank](#), Israel has imposed a temporary full closure between governorates, restricting movement, disrupting livelihoods, and limiting market access. WFP is monitoring the situation and assessing potential impacts on operations.
- According to WFP's February [Market Monitor](#), Gaza markets remain functional but under strain. Ramadan-related

demand, high prices (still well above pre-crisis levels) and unemployment exceeding 80 percent continue to severely limit household purchasing power, underscoring the importance of sustained digital cash assistance.

PROGRAMME UPDATE

- General Food Assistance in Gaza**
 - In February, WFP reached nearly **939,500 people through 50 active distribution sites**. Due to continued shortages of ready-to-eat rations inside Gaza and persistent pipeline uncertainty, general food assistance (GFA) rations **remained at 50 percent** throughout the month.
 - Thirty-five WFP community kitchens** remain operational across the Gaza Strip, providing approximately **350,000 meals per day**. During Ramadan, meal schedules are adjusted to align with fasting hours, and fresh vegetables have been incorporated into meal distributions.

- WFP continues to support **19 operational bakeries**, currently producing over **160,000 bread bundles per day** (2 kg each). Bread is mainly distributed at a subsidized price through 139 contracted retailers or free of charge through community kitchens.



Nutrition Assistance in Gaza

- WFP partners continue to provide **malnutrition prevention assistance** to pregnant and breastfeeding women and girls (PBWG) and children under five across **201 active sites, reaching over 258,700 beneficiaries** during the reporting period. In parallel, **treatment services** continue across **90 sites, reaching over 13,000 PBWG** during the same period.
- In collaboration with UNICEF, UNRWA, and the Education Cluster, **WFP provided fortified nutritious snacks to nearly 298,000 children** in 299 active Temporary Learning Spaces.
- In February, the **Cash for Prevention (C4P) pilot** reached **7,453 PBW** and children under five through a cash top-up for prevention, combined with Social and Behavior Change Communication (SBCC) sessions.



Digital Payments in Gaza

- In February, WFP provided **digital payments through e-wallets** to more than **456,000 people (91,211 households)**, exceeding the 90,000-household target. Of the overall target, 40,000 households received regular monthly transfers as WFP scales up e-wallet assistance. The remaining households receive one-off transfers on a rotational basis, while WFP monitors market functionality and food security impacts.
- Cash for Work (CfW) and Livelihoods Recovery Project:** Sewing activities continued across four sites with 258 participants, producing items for distribution through cooperating partners. Carpentry samples were finalized, while participant selection for carpentry and financial literacy activities remains ongoing.



West Bank Operations

- WFP continues to implement emergency and regular assistance programmes in the West Bank to support vulnerable populations affected by ongoing socioeconomic and humanitarian pressures.** Assistance is provided through a combination of food vouchers, in-kind food and cash-based transfers, targeting food-insecure households, displaced families, and vulnerable communities, including Bedouins and herders in Area C.



SUPPLY CHAIN

- Offloading rates through the **Egypt corridor remain critically low**, with around 70 percent of authorized WFP trucks in February not permitted to offload, causing delays, added costs, and reduced pipeline predictability, primarily due to humanitarian aid de-prioritization and imposed limitations on the overall trucks throughput.
- Constraints across other corridors persist.** Diversions from Egypt to Ashdod have increased transit time, costs, and clearance requirements. Jordan Government-to-government (G2G) convoys remain suspended, while Back-to-back (B2B) food convoys continue twice weekly via Allenby crossing.

* G2G allows direct transport on Jordanian trucks to Gaza crossings, enabling

faster and more streamlined delivery, whereas B2B requires cross-loading cargo between Jordanian, Israeli, and Palestinian trucks before entering Gaza, making delivery slower and more complex.

- In the **West Bank, WFP has initiated wheat grain milling**, contributing to a more food systems-oriented approach transition.

CLUSTERS AND COMMON SERVICES



Food Security Sector (FSS)

- As of 28 February, **1.65 million meals** were prepared and delivered daily by 28 partners through 185 kitchens across Gaza (including WFP-supported kitchens). However, border closures linked to escalating regional tensions, which are preventing the entry of stocks and fuel, pose an immediate risk to the continuation of cooked meal operations.
- In parallel, FSS partners distributed approximately **40 mt of potato tubers** which were imported via the private sector in late January, to 57 farmers in Deir al Balah and Khan Yunis, supporting the cultivation of 170 dunums (approximately 42 acres). Technical assistance continues throughout the cultivation cycle.



Logistics Cluster (LC)

- During February, the Logistics Cluster continued facilitating cargo collection and transport from KS and Erez West (Zikim), despite persistently low offloading volumes at the crossings. **The Cluster supported 11 partners in collecting 9,437 pallets from KS and Zikim.**
- At KS, the Cluster maintained routine **physical inventory counts twice weekly**, subject to access and security conditions.
- A newly secured Cluster storage facility in Gaza's Middle Area became operational during the month, increasing the total number of **common storage facilities inside Gaza to seven, with a combined capacity exceeding 9,000 m²**. In February, Cluster warehouses received **9,062 pallets** on behalf of **10 partners** for storage across Gaza.
- Through Jordan, the Cluster continued facilitating B2B convoys via King Hussein Bridge (Allenby) and Sheikh Hussein Bridge (Jordan River).
- Prior to the subsequent closure of crossings following regional escalation, upstream aid flows to Gaza were characterized by reduced truck manifesting and high return rates, particularly for cargo transiting via Egypt and shipments containing dual-use items. **In February, only 441 of 1,228 manifested humanitarian trucks from Egypt were offloaded (36 percent).** Elevated return rates have persisted since the closure of Nitzana crossing on 1 January, with recent figures indicating exceptionally elevated returns.



Emergency Telecommunications Cluster (ETC)

- ETC is strengthening communications for humanitarian operations in Gaza, including upgrading secure infrastructure in line with UN standards.
- A VHF repeater was relocated to the Khan Yunis Training Centre, linking to the Jerusalem Security Operations Centre and improving southern Gaza coverage.