

WFP PALESTINE EMERGENCY RESPONSE External Situation Report 85

Reporting Period:
1-15 March 2026

HIGHLIGHTS

- Amid escalating regional tensions, humanitarian cargo continues to enter the Gaza Strip through a single operational crossing (Kerem Shalom), constraining the flow of goods and reducing both humanitarian and commercial supply volumes. This has a disproportionate impact on northern Gaza, where the closure of the Zikim crossing forces aid to take longer, more costly routes—delaying delivery and increasing reliance on scarce fuel.
- Restricted entry of humanitarian aid and commercial goods is also deepening market and access constraints across Gaza, driving up prices of essential items, while further weakening response capacity. Immediate action is required to open all crossings and corridors to stabilize supply – including commercial goods – and ensure access across Gaza.

MARCH IN NUMBERS

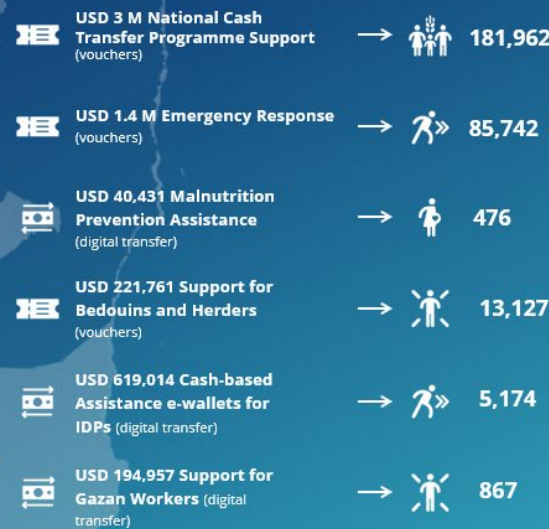
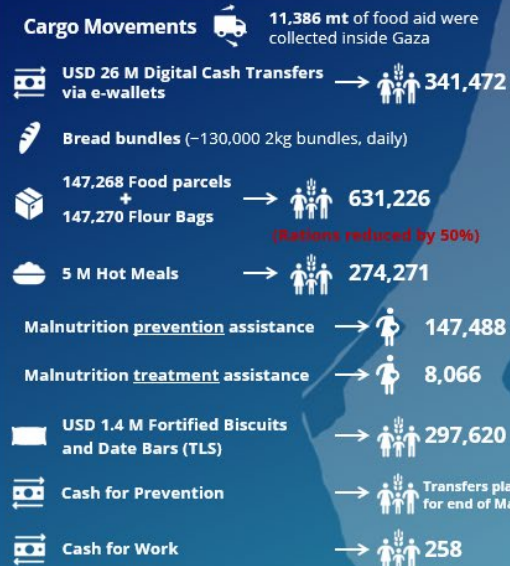
Reporting period 1-15 March 2026

PALESTINE

1,293,698 beneficiaries
(2 million planned)

Gaza **1,009,203** (1.6 million planned)

West Bank **284,495** (338,000 planned)



WFP Contributions



Largest Donors



WFP six-month net funding requirements

USD 264 M April - Sep 2026

Figures are subject to change pending final partner reporting for the month. Total beneficiary numbers account for overlap among individuals receiving multiple types of assistance.

SITUATION UPDATE

- Regional escalation has intensified with continued hostilities and heightened tensions disrupting diplomatic engagement and straining humanitarian supply chains.
- In [Gaza](#), these developments are compounding an already fragile context, with [uncertainty](#) around ceasefire and governance arrangements, delays in reconstruction planning, and increased risks to the continuity and predictability of humanitarian access and service delivery.
- In the West Bank, the situation remains highly tense, with heightened movement restrictions, periodic escalations in violence, and increasing operational constraints affecting humanitarian access and field operations. Spillover effects from the regional escalation have further tightened access, increased security incidents, and elevated protection risks for communities and humanitarian actors.
- According to [WFP's March Market Monitor](#), Gaza markets remain functional but under increasing strain, with the regional escalation triggering panic buying, reduced

- imports, and sharp price spikes. While some stabilization followed, prices remain above February levels, and food access has worsened for many households. Ongoing liquidity constraints, low retailer stocks, and severe cooking gas shortages continue to strain market functionality (with almost half the population reporting that they rely on waste burning as an alternative to cooking gas) reinforcing the need for sustained cash assistance and improved supply flows.

PROGRAMME UPDATE

General Food Assistance in Gaza

- In March so far, WFP reached more than **631,200 people through 50 active distribution sites**. Due to supply issues through the Egypt and Jordan corridors, general food assistance (GFA) rations **remain at 50 percent** in March.
- Thirty-five WFP-supported community kitchens** remain operational across the Gaza Strip, producing approximately **350,000 meals daily**, alongside the provision of **free bread across 412 shelters**.
- WFP also supports **30 operational bakeries** producing an average of **130,000 bread bundles per day** (2 kg each).

Bread distribution is primarily subsidized through contracted retailers (64 percent), with the remaining 36 percent distributed free of charge through community kitchens. Additionally, ten newly engaged bakeries received training on food safety and production standards.



Nutrition Assistance in Gaza

- WFP partners continue to provide **malnutrition prevention assistance** to pregnant and breastfeeding women and girls (PBWG) and children under five across **112 active sites, reaching over 147,488 beneficiaries** during the reporting period. In parallel, **treatment services** continue across **66 sites, reaching over 8,066 PBWG** during the same period.
- In collaboration with UNICEF, UNRWA, and the Education Cluster, **WFP provided fortified nutritious snacks to nearly 297,620 children** in 329 active Temporary Learning Spaces.
- **Cash for Prevention (C4P):** Social and Behavior Change Communication (SBCC) sessions for beneficiaries are ongoing, with cash transfers scheduled for the last week of March.



Digital Payments in Gaza

- As of mid-March, WFP provided **digital cash assistance through e-wallets** to **341,472 people (over 62,000 households)**, representing 48 percent of the 130,000-household monthly target. Of the overall target, these 62,000 are fixed households that receive regular monthly transfers as WFP scales up e-wallet assistance. The remaining households will receive one-off transfers on a rotational basis, while WFP monitors market functionality and food security impacts.
- **Cash for Work (CfW) and Livelihoods Recovery Project:** Sewing activities continued across four sites, engaging 258 participants, while carpentry activities were launched across four sites in Deir al Balah and Gaza City, reaching 100 beneficiaries.



West Bank Operations

- **WFP continues to implement emergency and regular assistance programmes** in the West Bank to support vulnerable populations affected by ongoing socioeconomic and humanitarian pressures.
- In March so far, assistance is provided to **284,485 people** through a combination of food vouchers, in-kind food and cash-based transfers, targeting food-insecure households, displaced families, and vulnerable communities, including Bedouins and herders in Area C.



SUPPLY CHAIN

- Following the escalation of hostilities between Iran and Israel on 28 February, all access corridors into Gaza were temporarily closed, which limited cargo collection at Karam Abu Salem/Kerem Shalom (KS). **Operations resumed on 3 March**, with the Egypt, Jordan, and Ashdod corridors reopening, while the West Bank corridor is expected to resume during the week of 15 March.
- Despite the reopening of KS on 3 March and improved throughput via the Egypt corridor than in February, **Erez West (Zikim) and Rafah crossings are non-operational**. This constrains both humanitarian and commercial cargo flows, particularly to North Gaza.

- In addition, sandstorms intermittently disrupted cargo handling and the movement of humanitarian supplies within Gaza.

CLUSTERS AND COMMON SERVICES



Food Security Sector (FSS)

- As of 7 March, **1,485,000 meals** were prepared and delivered daily by 28 partners through 170 kitchens across Gaza (including WFP-supported kitchens).
- Limited entry of humanitarian aid and commercial goods, including cooking gas **forced some partners to adjust cooked meal menus**, while others paused fresh produce distributions, due to limited availability and high prices.
- Between 3–12 March, partners distributed **307 mt of animal feed to 2,050 herders**. A new distribution round began on 15 March and is ongoing.
- FSS partners continue using the **Building Blocks platform** to support deduplication across food assistance activities. Since March 2025, around 14 organizations have been onboarded. As of 1 March 2026, approximately **46.4 mt of in-kind food assistance overlap has been prevented**.



Logistics Cluster (LC)

- Logistics Cluster collections resumed on 3 March from the KS platform. Between 1 and 15 March, **1,513 pallets were collected for five partners**. Physical inventory counts at the platform were conducted on 7 and 15 March.
- **Two new warehouses were identified** in the Middle Area and are expected to become operational in March, expanding common storage capacity. Temporary storage for partner cargo has been extended to up to two weeks. Between 1 and 15 March, **1,455 pallets were received into Cluster common warehouses for five partners**.
The Cluster facilitated **six Back-to-Back (B2B)* convoys for three partners via the Jordan route** (through Sheikh Hussein Bridge/Jordan River and King Hussein Bridge/Allenby), with 56 trucks offloaded at Gaza crossings. **B2B requires cross-loading cargo between Jordanian, Israeli, and Palestinian trucks before entering Gaza, making delivery slower and more complex.*
- Offloading rates **from Egypt** slightly improved, with **508 of 654 manifested trucks (78 percent) offloaded** at KS between 1 and 15 March.



Emergency Telecommunications Cluster (ETC)

- On 9 March, the ETC **participated in a multi-sectoral assessment of proposed Relief Housing Unit (RHU) sites in central Gaza**, focusing on network coverage, mobile signal strength, and the availability of free and reseller wireless internet connectivity.