





SAVING LIVES
CHANGING LIVES

WFP Democratic Republic of the Congo

Situation Report #51 – 30 September 2023

Highlights

- **Eastern Crisis:** From January to August, WFP has assisted 2.8 million people in Ituri, North Kivu and South Kivu, under its emergency response in-kind food, cash and nutrition programmes. Since the scale-up of operations in June, WFP increased the cash-in-hand modality, assisting 800,000 people in July alone - an eightfold increase in the reach of WFP's cash assistance in just one month - making DRC one of WFP's largest cash-in-hand operations globally. During August and September, the cash programme continued to exceed pre-scale-up numbers with 400,000 reached each month. **However, as of October, cash resources are desperately low and WFP will be forced to drastically reduce cash-based distributions.**
- To compensate for low funding for cash distributions, WFP is increasing its in-kind food activities in the three scale-up provinces. In September, WFP rolled out the first cycle of wheat distributions which are part of an in-kind contribution by the United States Bureau for Humanitarian Assistance.
- However, resources are urgently required to purchase pulses and vegetable oil to complete the food basket, which currently risks to be reduced to a half ration.
- **WFP urgently needs USD 629.7 million in the next six months from September to February 2024.** Without additional funding, more people are at risk of not receiving the life-saving assistance they urgently need. WFP plans to reach 3.6 million people in the scale up but is currently struggling to meet the needs of the 1.5 million people targeted in this cycle.

	25.4 m¹ highly food-insecure people (51% female/49% male) (50% children/50% adults)
	26 provinces affected
	6.3 m people displaced²
	4.3 m people reached January to August 2023

Situation Update

- **Eastern Crisis:** Conditions in internally displaced peoples' (IDP) camps have become dire with the start of the rainy season in September. Families are living under layers of tarpaulin held up by thin wooden branches as the rains hit. Sanitary conditions are also poor and cholera is sweeping through the camps, as DRC faces the worst cholera crisis since 2017 ([UNICEF](#)).
- Protection issues are also a major concern. The intensification of insecurity, violence and conflict across eastern DRC has spurred a sharp increase in grave violations perpetrated against women and children, notably child recruitment into armed groups, abductions, and sexual violence. Food scarcity has been identified as a contributor to the current high rates of gender-based violence experienced by women and girls in eastern DRC specifically in the province of North and South Kivu in IDP camp settings. In and around Goma women and girls report to humanitarian responders that they have experienced sexual and physical assault by men when travelling to and from

¹ According to the integrated food security phase classification (IPC) analysis [for July to December 2023](#)

² As per [UNHCR data](#)

income-generation activities, markets, wood collection, and agricultural activities.

WFP Response

- Under the revised Country Strategic Plan 2021-2024, WFP is targeting **8.5 million people** with food, nutrition, and resilience support in 2023 though targets will be revised in line with the fast-changing situation.



Food and Nutrition Assistance (August 2023)

- **Overview:** In August, WFP assisted **1.2 million unique beneficiaries, of which 58 percent are women and girls, across all activities.** WFP reached 500,000 people with cash-based transfers (CBT), 400,000 with in-kind assistance, and 200,000 with malnutrition treatment and prevention supplies. WFP faced major security challenges notably in North Kivu and Ituri, impeding its emergency progress, which have continued into September.
- **North Kivu:** WFP reached **300,000 people** with in-kind assistance, cash and malnutrition treatment and prevention supplies. The anti-MONUSCO demonstrations from 30 August, which resulted in violent clashes with local authorities, caused the Goma area office to shut down for five days. All travel was suspended and WFP operations from Goma were halted. Additionally, insecurity in Masisi prevented WFP's financial partner from accessing the area to conduct cash distributions to 165,000 people. In response, WFP is exploring other options for distributing food in Masisi which will be reflected in the planning for October.
- **Ituri:** WFP assisted **400,000 people** with food assistance, cash and malnutrition treatment. In August, non-state armed group activity and tensions disrupted humanitarian movement along the primary route leading to the provincial capital, Bunia. This delayed the start of in-kind food distributions at two sites in Djugu, though WFP resumed its activities later in the month.
- **South Kivu:** WFP reached **200,000 people** with food assistance, cash and malnutrition treatment and prevention commodities. WFP is responding to the increasing number of people displaced to Fizi due to intensifying conflict.
- **Other provinces (Kasai, Kasai Central and Oriental, and Tanganyika):** WFP reached 300,000 people with emergency food, cash and nutrition activities. Of these, 100,000 were programmes for Central African refugees in North Ubangi, 100,000 were in Tanganyika, and 80,000 were in the Kasais.



Supply Chain

- **Local procurement:** WFP is purchasing 1,600 mt of maize meal and 2,000 mt of pulses locally for the next cycle of distributions.
- **Challenges:** WFP is advocating with the Government for the Goma point of entry to be re-opened and for customs processes to be simplified. It is a key access route, and the Bukavu alternative is becoming a bottleneck. WFP has

increased its warehouse capacity in Bukavu to manage the increased volume of arrivals.

- A primary supply route to Beni in North Kivu was severed due to a broken bridge for several days in September, though the passage is now clear and WFP's transportation has resumed.



Clusters and Common Services

Logistics Cluster

- **Information Management/Geographical Information Systems:** The logistics cluster shared updates of documents and operational maps on the dedicated [portal](#). The cluster monitors and shares physical access alerts via: drc-logs@logcluster.org.



Food Security Cluster (FSC)

- The updated 2023 geographical tool for targeting health zones is now available [here](#).
- The FSC's achievements in Q2 2023 can be reached at this [dashboard](#).
- The latest integrated food security phase classification analysis results show that almost a quarter of the total population or 25.4 million people are facing acute food insecurity in DRC between July and December 2023. The most affected populations include displaced people, returnees, host families and populations living in conflict zones or affected by natural disasters.
- The results point to an improvement in food security in Ituri, North Kivu and South Kivu, which are three conflict-affected provinces in comparison to the January-June 2023 assessment results. The persistence of the socio-political conflict continues to disrupt households' agricultural activities, thereby affecting their livelihoods.
- The improvement in food security levels in the provinces of Ituri and North Kivu can be partially attributed to the impact of humanitarian assistance in the region which prevented more people from slipping further into emergency levels of food insecurity. For instance, in North Kivu, the number of people facing crisis levels of food insecurity or worse (IPC 3 and above) decreased from 3.9 million to 2.6 million (33 percent decrease), though it remains the province with the highest number of people in IPC3 and above.
- On the contrary, South Kivu, a province affected by an influx of displaced people due to the M23 crisis and recent natural disasters, has had a different outcome. South Kivu records an increase in the number of people in emergency and crisis levels of food insecurity (IPC 3 and above) from 1.2 million to 1.5 million.



UN Humanitarian Air Service (UNHAS)

- **Operational Overview:** In September, UNHAS regular and special flights transported **3,986 passengers** and **53 mt** of essential light cargo.
- **Medical Evacuations:** UNHAS accomplished five medical evacuations out of Gbadolite, Kalemie, Kalole, Lugushwa,

Mbuji-Mayi and Walikale.

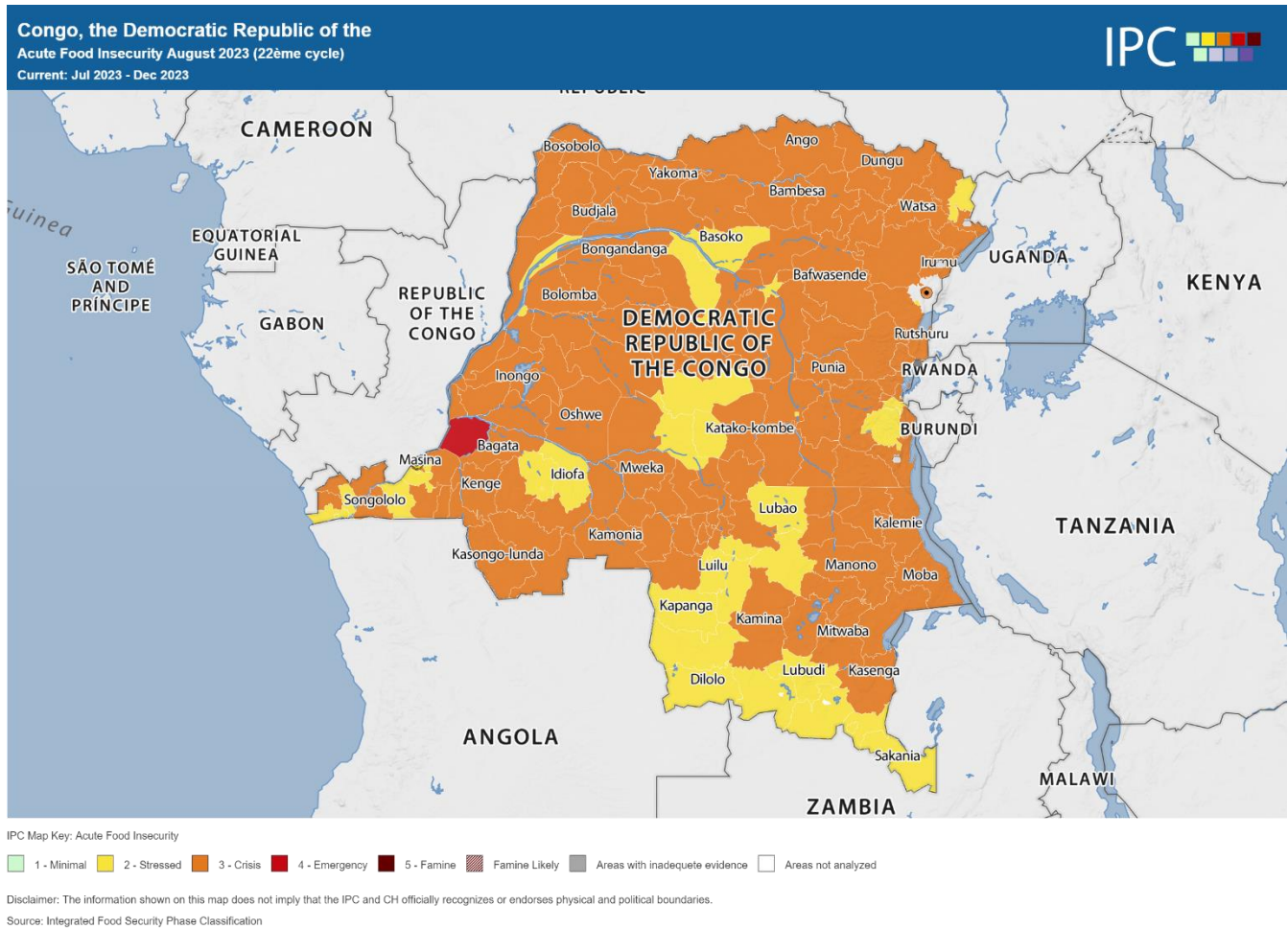
- **Special Flights:** In addition to regular flights, UNHAS conducted five special flights to serve specific needs of partners including the Adventist Development and Relief Agency, Fondation Panzi, WFP and the World Health Organization.
- **Fuel shortages:** Fuel shortages continued affecting UNHAS operations particularly in Kananga and this prompted disruptions to the regular flight schedule. Flights in the Greater Kasai region have been suspended since mid-September except for the Kinshasa-Kananga-Goma route. UNHAS is working diligently to find a long-term solution to the fuel problem in order to resume flights.
- **Flight disruptions:** The start of the rainy season in September has resulted in flight cancellations particularly on routes within North Kivu and Ituri. To minimise the impact of these cancellations on operations, UNHAS will endeavour to reduce delays and give priority to recovery flights.
- On the other hand, in Kalemie, flights were disrupted for a week in September as the runway underwent maintenance works.



Communications, Advocacy and Marketing

- **Integrated Phase Classification 2023 Launch:** A launch was organised under the auspices of the Government and with FAO and WFP, with media engagement.
- **Southern African Development Community expo:** WFP's Regional Director spoke at the [Rural Rapid Transformation expo](#) held in DRC to reinforce that WFP is committed to working with Governments, humanitarian partners and the private sector to make a lasting change.
- **Interviews:** An interview with the Emergency Coordinator, Cynthia Jones, on the eastern DRC emergency response operations was disseminated to local media.
- **High-Level Advocate:** Congolese footballer, Distel Zola, visited Goma and Kalemie to showcase WFP operations.
- **World Peace Day:** WFP published an article featuring DRC on [World Peace Day](#) reinforcing the need for peace to achieve zero hunger.

Integrated Food Security Phase Classification Map of DRC: July to December 2023



Contacts

- Peter MUSOKO, Country Director: peter.musoko@wfp.org
- Tawonga NGOMA, Reports Officer: tawonga.ngoma@wfp.org
- For further information, visit the Democratic Republic of Congo page [here](#).

WFP thanks the following donors who contributed resources in 2023:

