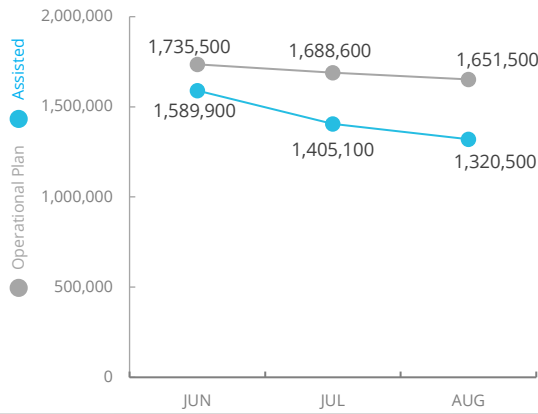


Democratic Republic of Congo

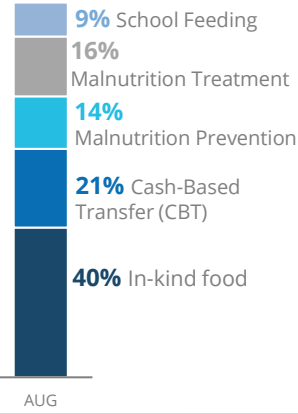
PEOPLE ASSISTED

DR Congo Country Strategic Plan

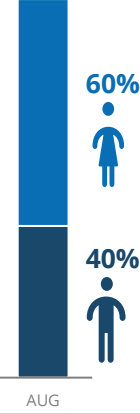


OPERATIONAL PROFILE

By Activity



By Sex



COVID-19 OPERATIONAL IMPACT

Status WFP Response adjusted

- ✔ Extended distribution timelines
 - ✔ Crowd control and social distancing measures at distribution sites
 - ✔ Mandatory hygiene measures at distribution sites
 - ✔ School feeding through take home rations
- ✔ Ongoing
 ! Partially Suspended
 ✘ Suspended

FUNDING

DR Congo Country Strategic Plan (CSP)
October 2021 – March 2022

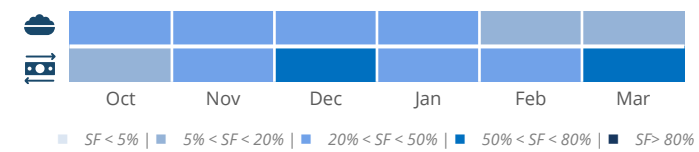
Net funding requirements
US\$73.5m

2021 LEVEL 3 RESPONSE
Requirements US\$662.5m

AVERAGE MONTHLY FUNDING REQUIREMENTS (US\$)

Food: 25.6m **Cash: 12.7m**

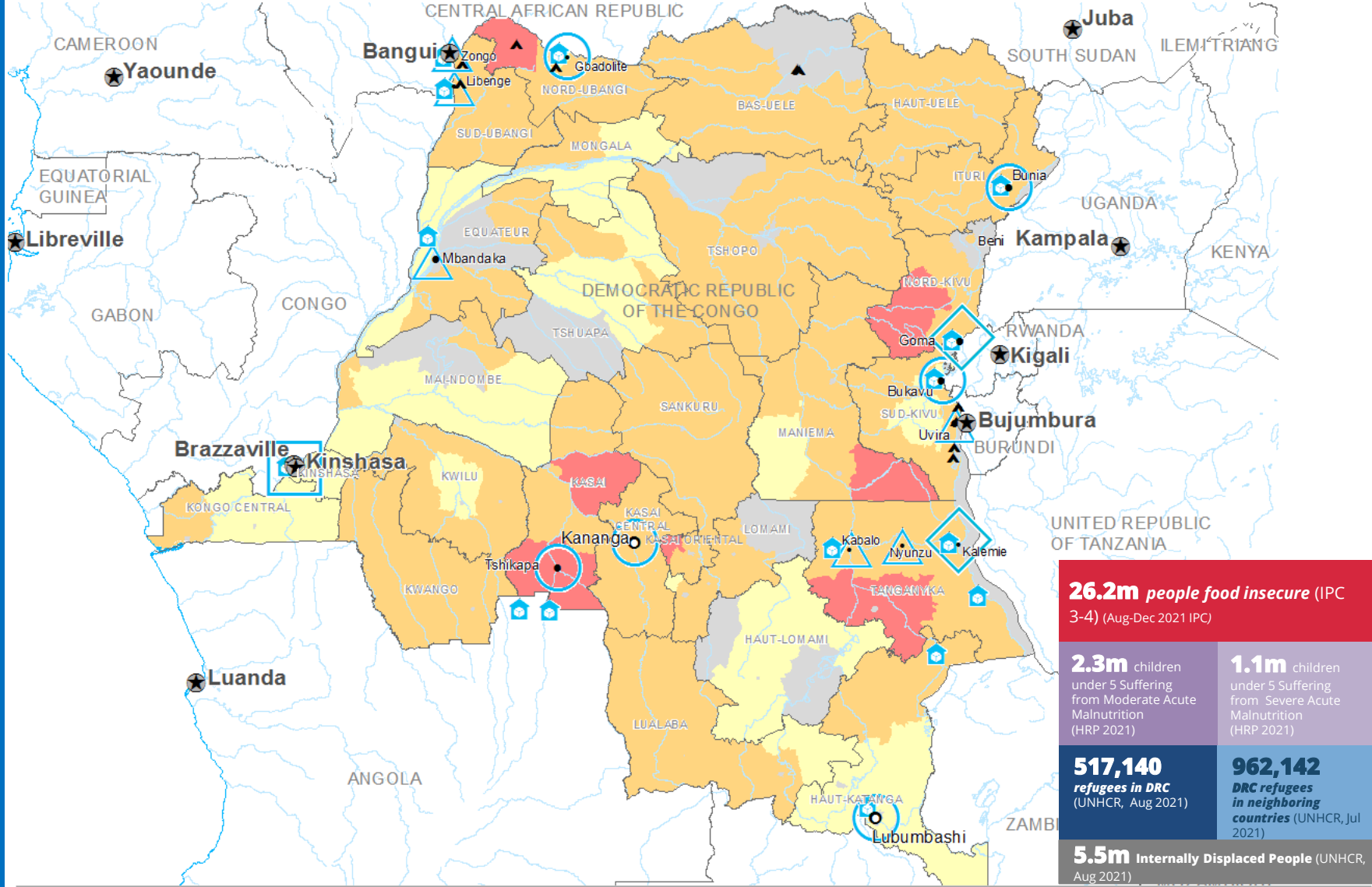
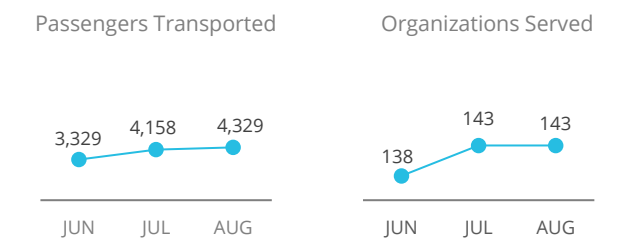
EXPECTED SHORTFALLS



WFP-LED AND SUPPORTED CLUSTERS



UN HUMANITARIAN AIR SERVICES (UNHAS)



IPC Integrated Phase Classification
Projection August - December 2021

 No data	 Crisis (Phase3)	 Country Office	 Field Office	 National Capital	 International Boundary
 Minimal (Phase1)	 Emergency (Phase 4)	 Area Office	 Warehouse	 Major Town	 Province Boundary
 Stressed (Phase2)	 Famine (Phase5)	 Refugee Camp	 Intermediate Town	 Small Town	 River

Sources: WFP, UNGIWG, GAUL, GLCSC, OCHA, UNHCR, IPC.
The designations employed and the presentation of material in the map(s) do not imply the expression of any opinion on the part of WFP concerning the legal or constitutional status of any country, territory, city or sea, or concerning the delimitation of its frontiers or boundaries.
© World Food Programme 2021.

WFP LEVEL 3 EMERGENCY

SITUATION REPORT and COUNTRY BRIEF

Gender and Age Marker **3**