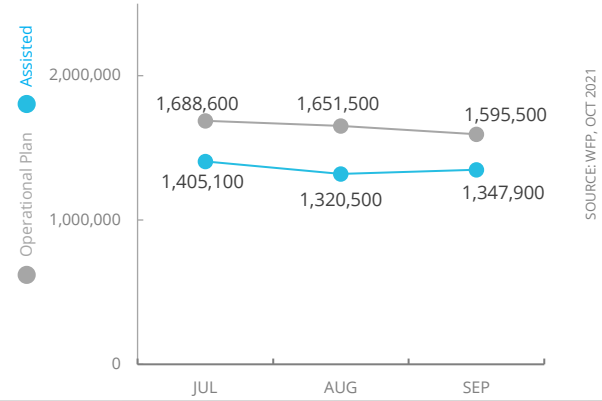


Democratic Republic of Congo

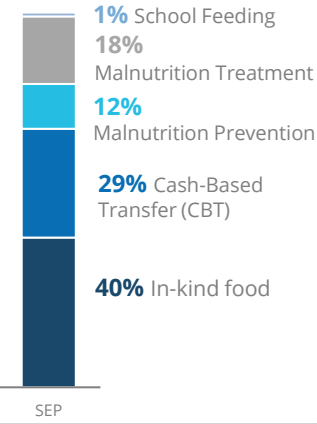
PEOPLE ASSISTED

DR Congo Country Strategic Plan

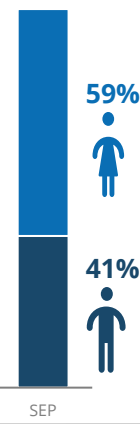


OPERATIONAL PROFILE

By Activity



By Sex



COVID-19 OPERATIONAL IMPACT

Status WFP Response adjusted

- ✔ Extended distribution timelines
 - ✔ Crowd control and social distancing measures at distribution sites
 - ✔ Mandatory hygiene measures at distribution sites
 - ✔ School feeding through take home rations
- ✔ Ongoing
 ! Partially Suspended
 ✘ Suspended

FUNDING

DR Congo Country Strategic Plan (CSP)
November 2021 – April 2022

Net funding requirements
US\$99m

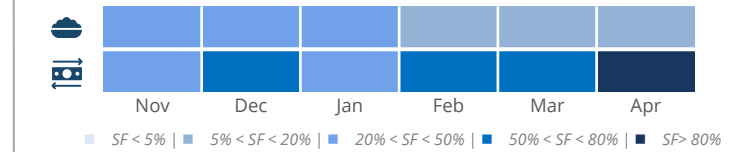
2021 LEVEL 3 RESPONSE
Requirements US\$662.5m

SOURCE: WFP, OCT 2021

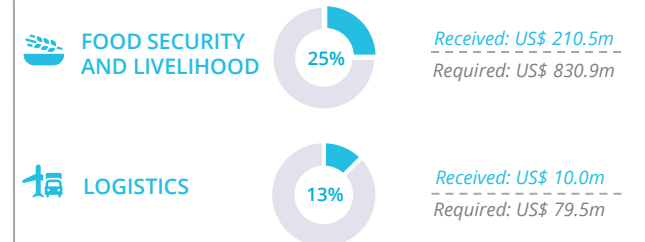
AVERAGE MONTHLY FUNDING REQUIREMENTS (US\$)

Food: 31.9m **Cash: 17.4m**

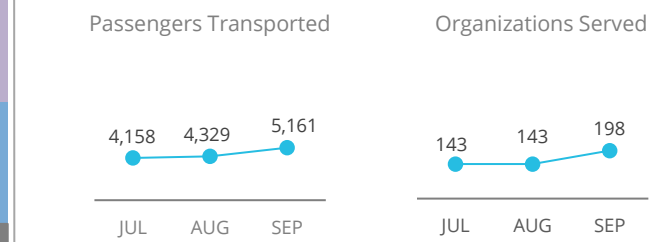
EXPECTED SHORTFALLS



WFP-LED AND SUPPORTED CLUSTERS

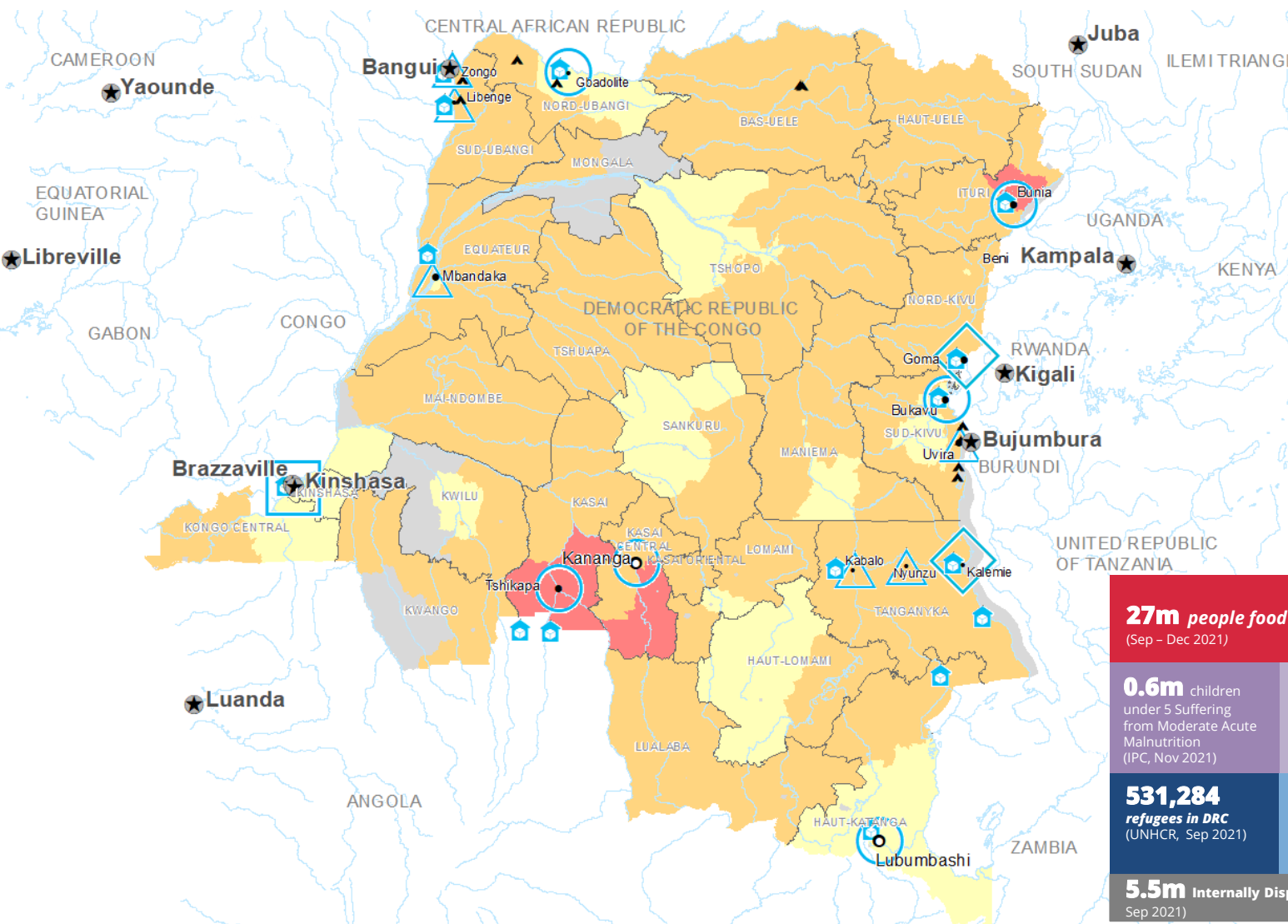


UN HUMANITARIAN AIR SERVICES (UNHAS)



WFP LEVEL 3 EMERGENCY

SITUATION REPORT and COUNTRY BRIEF



27m people food insecure (IPC 3-4)
(Sep - Dec 2021)

0.6m children under 5 Suffering from Moderate Acute Malnutrition (IPC, Nov 2021)

0.2m children under 5 Suffering from Severe Acute Malnutrition (IPC, Nov 2021)

531,284 refugees in DRC (UNHCR, Sep 2021)

961,617 DRC refugees in neighboring countries (UNHCR, Sep 2021)

5.5m Internally Displaced People (UNHCR, Sep 2021)

IPC Integrated Phase Classification
Projection September - December 2021

- No data
- Minimal (Phase 1)
- Stressed (Phase 2)
- Crisis (Phase 3)
- Emergency (Phase 4)
- Famine (Phase 5)

- Country Office
- Area Office
- Field Office
- Warehouse
- Refugee Camp
- National Capital
- Major Town
- Intermediate Town
- Small Town
- International Boundary
- Province Boundary
- River

Sources: WFP, UNGIWI, GAUL, GLCSC, OCHA, UNHCR, IPC.
The designations employed and the presentation of material in the map(s) do not imply the expression of any opinion on the part of WFP concerning the legal or constitutional status of any country, territory, city or sea, or concerning the delimitation of its frontiers or boundaries.
© World Food Programme 2021.



SOURCE: WFP, OCT 2021