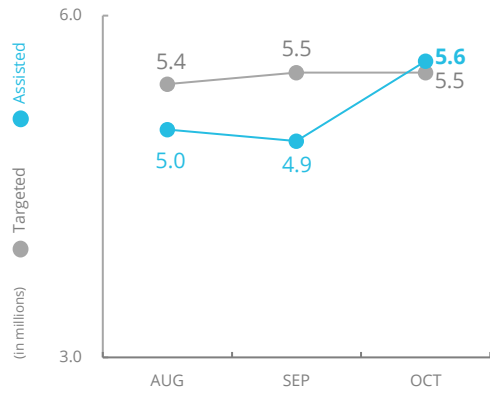
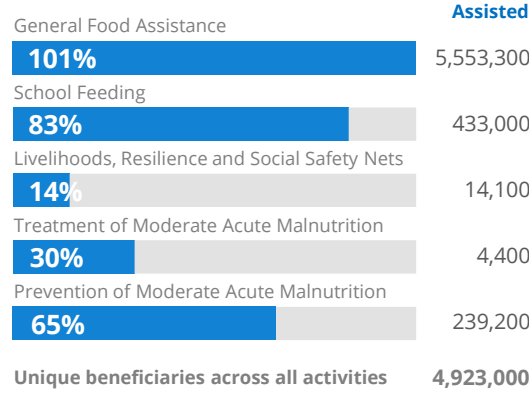


PEOPLE ASSISTED General Food Assistance



SOURCE: WFP, 3 DEC 2021

OPERATIONAL PROFILE By Activity (October)



PEOPLE FOOD INSECURE



SOURCE: WFP 2020 Food Security and Livelihoods Assessment

FUNDING Syria Interim Country Strategic Plan (ICSP)

December 2021 - May 2022

US\$527.8m

Net funding requirements

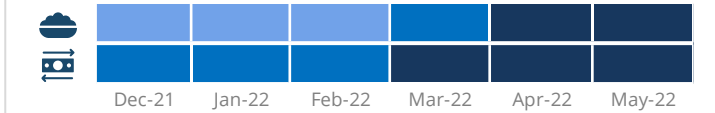
2021 LEVEL 3 RESPONSE
Requirements: US\$1269.9m
Funded: US\$638.7m

50%

AVERAGE MONTHLY FUNDING REQUIREMENTS (6 Months - US\$)

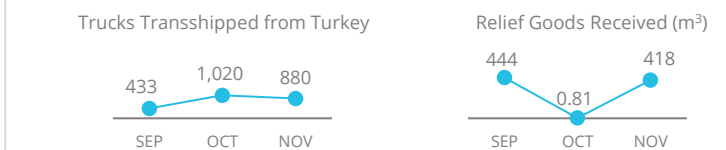
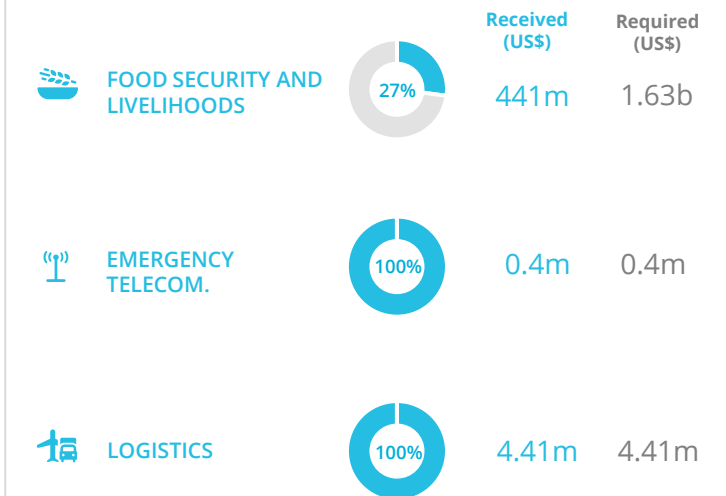


EXPECTED SHORTFALLS



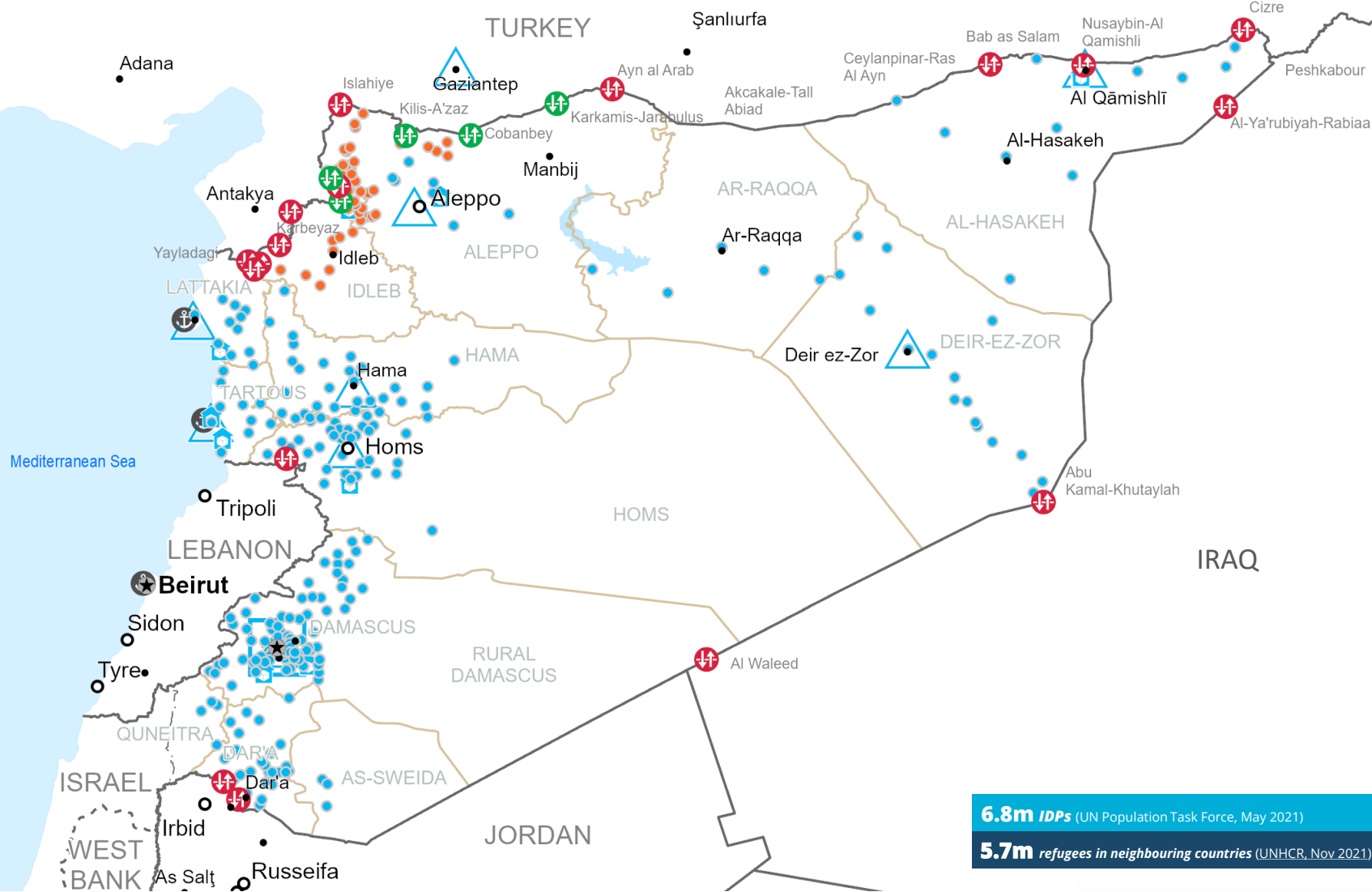
SOURCE: WFP, 3 DEC 2021

WFP-LED AND SUPPORTED CLUSTERS



WFP LEVEL 3 EMERGENCY SINCE 14 DECEMBER 2012

SITUATION REPORT and COUNTRY BRIEF



6.8m IDPs (UN Population Task Force, May 2021)
5.7m refugees in neighbouring countries (UNHCR, Nov 2021)

- Country Office
- Warehouse
- National Capital
- International Boundary
- Field Office
- Open Border Crossings
- Major Town
- Governorate Boundary
- Open Border Crossings with Restrictions
- Intermediate Town
- Armistice Boundary
- Closed Border Crossings
- Port
- Regular Deliveries
- Cross-Border Deliveries

Approx. 56.25% of total FDP are displayed on this map.

Sources: WFP, UNGIWG, GAUL, GLCSC, OCHA, UNHCR.

The designations employed and the presentation of material in the map(s) do not imply the expression of any opinion on the part of WFP concerning the legal or constitutional status of any country, territory, city or sea, or concerning the delimitation of its frontiers or boundaries. © World Food Programme 2021.