



28 Nov 2024

WFP PALESTINE EMERGENCY RESPONSE External Situation Report 40

HIGHLIGHTS

- The humanitarian response in Gaza is nearing collapse as famine looms. Access restrictions, the breakdown of law and order and disregard for international humanitarian law are placing humanitarian staff, operations, and the people of Gaza at increasing risk. Aggressive looting and attacks of humanitarian convoys continue to strain delivery in southern and central Gaza, while parts of the north of Gaza remain inaccessible. Fuel supply is also disrupted due to halted shipments to North Gaza, risks of looting, and lengthy approval processes for deliveries from the South.
- Despite WFP's efforts to repair roads, bolster logistics, and test new routes, the situation is deteriorating, with not enough supplies entering the Strip to provide monthly assistance. Bakeries are shutting down, and hot meal kitchens are stretching remaining supplies.
- An urgent improvement in security and public order is necessary to meet the immense humanitarian needs. WFP is ready to provide essential assistance but requires reliable access, a safe operating environment, steady resupply, removal of barriers, and improved infrastructure.

NOVEMBER IN NUMBERS – 1-23 November

- 109,784 Food parcels**
37,292 Wheat flour bags
In Gaza City only → **552,831 beneficiaries**
- 7 M Hot meals** → **297,169 beneficiaries**
- 3.6 M LNS packs** → **32,745 PBW**
76,754 CU5
- 2 M Bread bundles**
- 282,946 HEBs/Date bars** → **16,000 beneficiaries**
- USD 594,501 CBT MPCA** → **12,859 beneficiaries**

PALESTINE 996,546 people (1.4 million planned)
GAZA 815,432 people (1.1 million planned)

West Bank 181,432 people (338,000 planned)

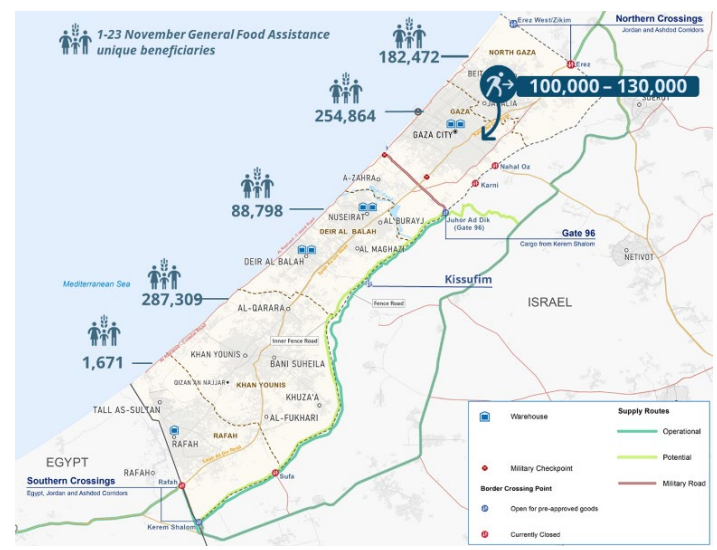
- USD 2.6 M CBT Voucher** → **177,922 beneficiaries**
- USD 635,558 CBT MPCA** → **3,510 beneficiaries**

WFP six-month net funding requirement USD 204 M
Dec 2024 - May 2025

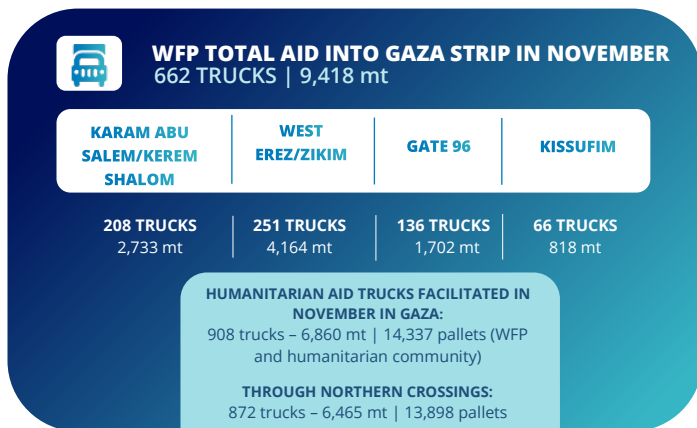
These numbers are still subject to change due to the finalization of November 2024 reporting figures from partners. The total beneficiaries figure accounts for overlap between people receiving more than one type of assistance (LNS, HEB figures are not included). ACRONYMS: Pregnant and breastfeeding women and girls (PBWG) | Children under five (CU5) | High-Energy Biscuits (HEB) | Multipurpose Cash Assistance (MPCA) | Cash-based Transfers (CBT)

SITUATION UPDATE

- Worsening **weather conditions** are amplifying hardships. Households in the north are burning waste for fuel after a year-long gas shortage, while families in the south and the centre face insecurity and explosive risks gathering firewood in depleted coastal areas.
- **Interrupted food assistance** in Gaza has led to a severe decline in food access, a tripling of households experiencing poor or severe food consumption, and a doubling of those facing food shortages since July.
- On 12 November, WFP delivered the first aid convoys through the new **Kissufim** crossing, which could improve aid to central and southern Gaza, but only with consistent access and safety for humanitarian convoys.



- The Gaza market is in crisis, with essential goods nearly depleted and very few commercial trucks entering, forcing partners to prioritize households that have gone over two months without assistance.



WFP OPERATIONS

General Food Assistance (GFA) – 1-23 November

- In November so far, WFP provided in-kind and cash-based food assistance to approximately **996,546 vulnerable individuals across Gaza and the West Bank**. In the **Gaza Strip**, WFP reached **815,432 people*** with reduced rations, due to access constraints. **The total beneficiaries figure accounts for overlap between people receiving more than one type and duration of assistance. Monthly distribution figures are estimates and subject to change pending final beneficiary reconciliation.*
- WFP distributed **109,784 emergency rations of ready-to-eat rations (RTEs)**, reaching **552,831 displaced people**.
- North Gaza bakeries are closed**, while Gaza City has four operational bakeries. South and Middle Gaza bakeries face daily supply shortages, leading to overcrowding and scarcity in bread supply. So far in November, over **2 million bread bundles** were produced.
- WFP provided over **7 million hot meals** to **297,169 people** across the Strip.
- A total of 32,745 pregnant and breastfeeding women and girls, along with 76,754 children under five**, received over 3.6 million lipid-based nutritional supplement (LNS) packs as complementary feeding assistance to meet their increased nutritional needs.
- 12,859 beneficiaries** received USD 594,501 in **multi-purpose cash assistance (MPCA)** used in designated shops in central Gaza, using e-wallets.

In the West Bank, 181,432 people redeemed USD 2.6 million through cash-based transfers – 177,922 redeemed **food vouchers** through the PalPay system, enabling them to purchase food items at WFP-contracted shops. While 3,510 people, including displaced populations from Gaza and those affected by recent Israeli military incursions, received **MPCA** through the same process, redeemed as physical cash.

SUPPLY CHAIN

- West Erez (Zikim)** is operational. WFP is only allowed to send aid to Gaza City.
- Kerem Shalom**: is operational. However, since the looting incident of 16 November, WFP has not been able to deliver through it.
- Kissufim**: is now operational but dispatches are proceeding slowly and cautiously due to repeated security incidents.
- Gate 96** is operational.
- Since the start of the crisis, WFP has delivered 10,618 WFP trucks with at least 168,470 mt of food into Gaza.

CLUSTERS AND COMMON SERVICES



Food Security Sector (FSS)

- The energy crisis is further worsening since the beginning of winter. In the north, there is an increasing dependence on burning waste for cooking fuel due to a critical shortage of cooking gas, which has not entered in the north for more than 13 consecutive months. In the south and central Gaza, women and children face increased insecurity in search for firewood, as most has been depleted in the highly populated areas along the coast during the past year.
- As of early November, approximately 440,000 cooked meals prepared by partners in 140 kitchens were distributed daily to families across the Strip – this was 25 percent less than the meal production in late September. More details in the [Food Security Sector Emergency Response dashboard](#).



Logistics Cluster

- On 20 November, the Logistics Cluster received 16 pallets at a warehouse in Deir Al Balah via a Jordanian airlift through the Kissufim entry point.
- Between 17 and 23 November, three direct convoys from Jordan delivered 75 trucks to West Erez/Zikim, including 37 inter-agency trucks carrying 224 mt for 6 partners. Full convoy details are available on the [interactive dashboard](#).
- As of 23 November, the Logistics Cluster has consolidated 21,379 m3 of humanitarian cargo at the common warehouse in Amman and received 50,775 m3 for common storage inside Gaza.



Emergency Telecommunications Cluster (ETC)

- Internet connectivity is a major challenge, with fuel shortages limiting telecommunication services and frequent blackouts due to insufficient allocations. Delays in approvals and denials also hinder the timely review and clearance of items for Gaza.
- On 20 November, an additional 58 satellite-based tracking devices (Track24) were delivered to Gaza.