




WFP's multi-purpose cash assistance enables this family to meet their food and other essential needs. Photo: WFP/Khadija Dia


# WFP LEBANON

## SITUATION REPORT – September 2022


### IN NUMBERS

-  **3,563,300** people in need of assistance


---

-  **1.7 m** people assisted in September 2022

---

-  **USD 24m** cash-based transfers made

---

-  **4,600 MT** of food distributed

### SITUATION UPDATE

- The price of the food basket monitored by WFP, the Survival Minimum Expenditure Basket (SMEB), reached an all-time high in August to reach LBP 884,000 up from LBP 860,000 in July. This was driven largely by the value of the LBP against the US dollar hitting an all-time low in September, nearly reaching LBP 40,000/USD.
- Reflecting the increasingly desperate socioeconomic conditions in Lebanon, the number of Lebanese and Syrian refugees seeking to migrate to Europe by sea has been increasing since the beginning of the crisis. Most recently, a boat carrying Lebanese and refugees seeking to migrate to Europe sank off the Syrian coast after sailing from North Lebanon, with a death toll exceeding one hundred. Also in September, a series of armed holdups took place in banks across Lebanon by depositors attempting to withdraw their funds, with no injuries or casualties reported.

### WFP RESPONSE

- Following the successful pilot to include Money Transfer Operators (MTOs) as cash redemption points in August, WFP expanded to include 27 MTO locations in September. Monitoring results show high satisfaction rates amongst beneficiaries and MTO staff with the redemption process. On average, it took beneficiaries approximately two minutes to redeem their assistance at MTOs, marking an efficient process and successfully reducing withdrawal times.

### HIGHLIGHTS

- On 5 September, WFP signed a memorandum of understanding with the Ministry of Agriculture to jointly establish a crop-type mapping system. The system will use satellite imagery and ground truth data to provide an overview of land use and support sustainable agriculture policy and practices in Lebanon.
- Work is underway to launch a call centre for the Ministry of Social Affairs and to launch national disability inclusion strategy. A safety and accessibility audit recommended actions to improve safe and dignified access to assistance for WFP beneficiaries.

### Cash Assistance for Refugees

- In September, WFP provided unconditional cash assistance to 1,045,800 refugees through 3 modalities:
  - *Multipurpose Cash* for food and other essential needs redeemable at ATMs: 232,100 Syrian refugees
  - *Food e-cards* for food needs redeemable at WFP-contracted shops: 352,000 Syrian refugees
  - *Cash-for-Food* for food needs redeemable at ATMs or shops: 456,300 Syrian refugees and 5,400 refugees of other nationalities.

### Economic Crisis Response for Lebanese

- WFP supported 298,100 vulnerable Lebanese individuals (77,600 households) with food parcels in September as part of its response to the ongoing economic crisis. Households who did not receive assistance in August due to shipment delays were prioritized for distribution in September and local procurement is increasing to mitigate the impact of potential delays in international shipments.

### School Meals

- In September, WFP distributed school snacks to 27,400 students in 136 schools across Lebanon in support of the Ministry of Education and Higher Education's summer 'catch-up' programme aiming to enhance students' preparedness for the 2022–2023 academic year ([link to highlights video](#)). Monitoring of the summer catch-up programme show that nearly all participating schools reported an organized distribution process, with minimal crowding.

## WFP RESPONSE, CONTINUED

- Planning for the school meals programme is ongoing for the upcoming academic year set to start in October. Lebanon's education sector however continues to face challenges, including loss of value of teachers' salaries and high transportation costs.



### Livelihoods

- On 5 September, WFP signed a memorandum of understanding with the Ministry of Agriculture to jointly establish a crop-type mapping system. The system will use satellite imagery and ground truth data to provide an overview of land use and support sustainable agriculture policy and practices in Lebanon.
- WFP is targeting 3,300 Syrian and Lebanese individuals for October 2022 to participate and benefit from Food Assistance for Training (FFT) and Food Assistance for Assets (FFA) activities under its livelihoods programme. The projects aim at building the capacity of farmers and individuals in the food systems through specific value chains, including dairy and vegetables. In addition, the projects aim to enhance natural resource management and improve farming efficiency by rehabilitating agricultural assets, such as roads and canals.



### Support to Social Protection Programmes

- In September, WFP assisted 347,700 Lebanese individuals (62,000 families) through the National Poverty Targeting Programme (NPTP). As of September, WFP has reached 83 percent of its target to assist 75,000 Lebanese households through the NPTP and is working with the Ministry of Social Affairs to include the remaining target households.
- WFP and the Ministry of Social Affairs finalized the terms of reference to launch a call centre for the Ministry, which will provide a critical two-way avenue for community and beneficiary feedback and communication.
- As of September, WFP delivered payments to 350,000 Lebanese individuals (78,000 households) on behalf of the Government for the Emergency Social Safety Net (ESSN).



### MONITORING

- WFP conducted process monitoring interviews with 350 Syrian and 132 Lebanese households receiving cash assistance in September. Beneficiaries reported slightly improved redemption experiences in September, with a lower average time to reach ATMs (27 minutes in September vs 29 minutes in August) and a lower average roundtrip cost of approximately LBP 73,000 in September (down from LBP 87,000 in August). Meanwhile, visits to 87 unique ATM locations across Lebanon showed that more than three-quarters of ATMs were observed without any crowding in September.
- Interviews with 200 Lebanese households receiving in-kind assistance show that the roundtrip cost to the distribution site increased from LBP 148,000 in August to LBP 151,000 in September, likely due to the hike in fuel prices. Meanwhile, it took beneficiaries an average of 22 minutes to reach the distribution site (average 12 KM distance), which is considered acceptable. Beneficiaries reported high satisfaction rates with the quantity of food within the parcels.



## GENDER, PROTECTION & ACCOUNTABILITY TO AFFECTED POPULATIONS (AAP)

- WFP received 48,400 claims in September through its call centre, with 58 percent received from women and 49 percent from refugees. 44 percent of the claims were to request assistance, 35 percent to request information, and the rest to provide feedback, express concerns, or relay protection issues. 95 percent of claims were resolved during the same month, while the rest are being resolved by WFP or awaiting provision of feedback to callers.
- A safety and accessibility audit was conducted for WFP's activity sites in north Lebanon: food distribution sites, contracted shops, ATM and MTO branches. Based on assessments of these sites, WFP is strengthening measures to ensure safe and dignified access to assistance for beneficiaries. Such measures include bolstering the help desk function and increasing monitoring of ATMs, among others.
- WFP supported the development of the draft for a national disability inclusion strategy under the auspices of the Ministry of Social Affairs (MoSA). The mapping of key stakeholders on disability in Lebanon is underway and a baseline study on the status of disability inclusion across WFP programmes has been designed, to be finalised by the end of the year. Meanwhile, support is being provided to enhance disability inclusion and accessibility to WFP's office, strengthening WFP as an inclusive employer.



### SUPPLY CHAIN & RETAIL

- WFP contracted two new local food suppliers to ensure a more stable supply, competitive pricing, and reduce access risks with suppliers now located in different parts of the country.



### ADVOCACY, COMMUNICATIONS & PARTNERSHIPS

- In September, visits with the UK Ambassador, H.E. Hamish Cowell, and the Australian Ambassador, H.E. Andrew Barnes took place in Beqaa and Beirut with refugee and Lebanese families benefiting from WFP assistance with the generous support of donor partners. During the visits, beneficiaries had a chance to highlight how their situation has deteriorated due to the ongoing crisis and how WFP's assistance is helping them meet their basic needs.
- In September, WFP issued a [news release](#) highlighting Korea's continuous support to the organization and the people of Lebanon amid the worsening crisis. In addition, a video was released highlighting WFP's call centre, with testimonies from callers. (Link [here](#))



### FOOD SECURITY AND AGRICULTURE SECTOR

- Between January and August 2022, 33 sector partners including WFP assisted 2.3 million people living in Lebanon: 1.1 million Lebanese, 1.1 million Syrian refugees, and 105,000 Palestinians. The majority received cash assistance while 824,000 people received in-kind food, 4,105 individuals had access to temporary agricultural labour, and 268 smallholder farmers received financial and technical support.



### FUNDING OVERVIEW

	Available Resources	Requirements
COUNTRY STRATEGIC PLAN (2018-2022)	60% US\$ 2 B	US\$ 3.4 B
2022 TOTAL REQUIREMENTS	52% US\$ 676 M Includes USD 241M for the ESSN	US\$ 1.3 B

OCT 2022 - MAR 2023  
NET FUNDING  
REQUIREMENTS

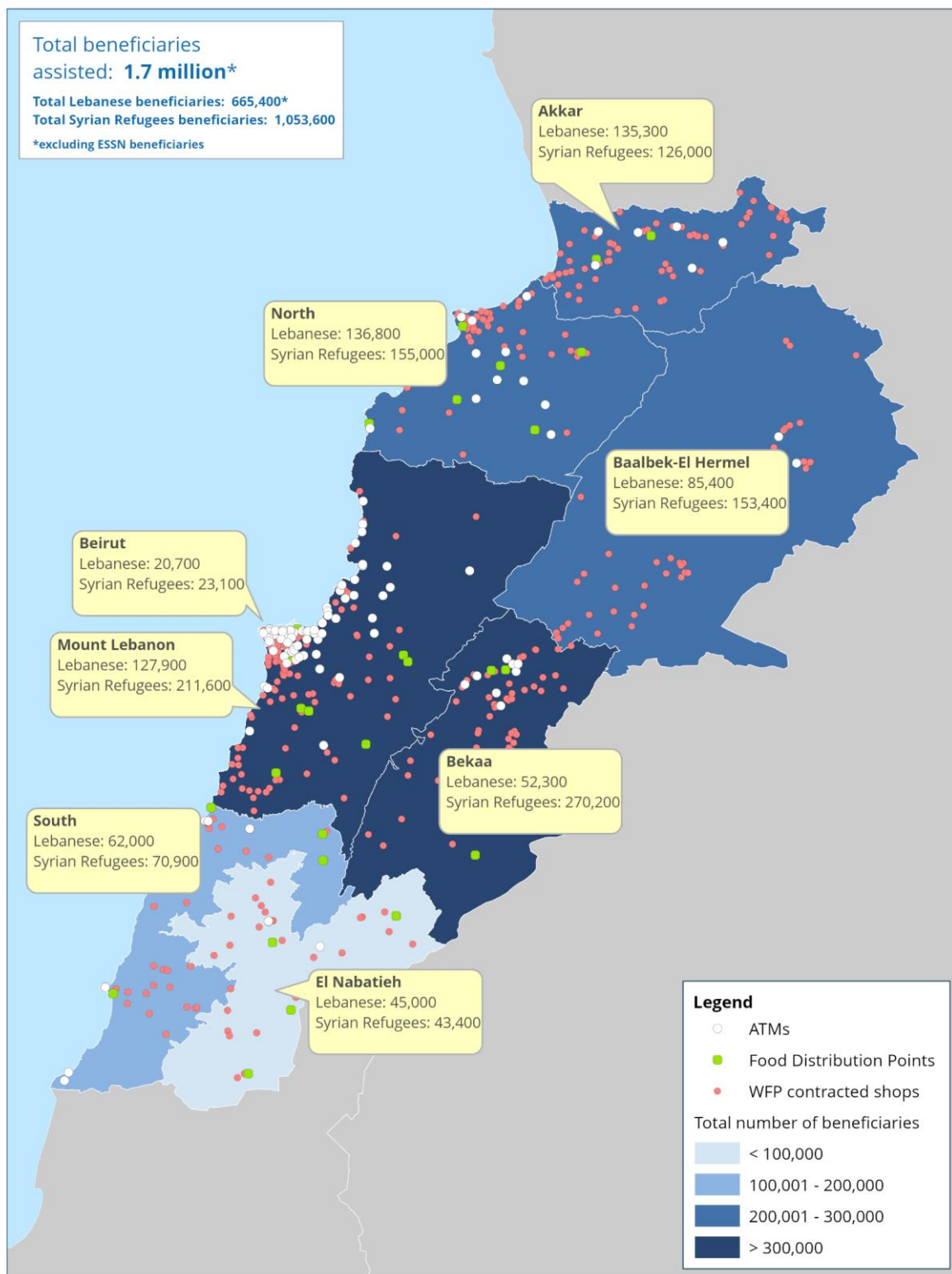
US\$ 507 million



World Food Programme

# Lebanon

WFP Cash and In-kind Assistance for Refugees and Lebanese – September 2022



## Donors

Australia, Canada, Cyprus, European Commission, France, Germany, Ireland, Italy, Japan, Lebanon's Presidency of the Council of Ministers, Lebanon Humanitarian Fund, Norway, Poland, Private Donors, Republic of Korea, Russia, Switzerland, UN CERF, United Kingdom, USA