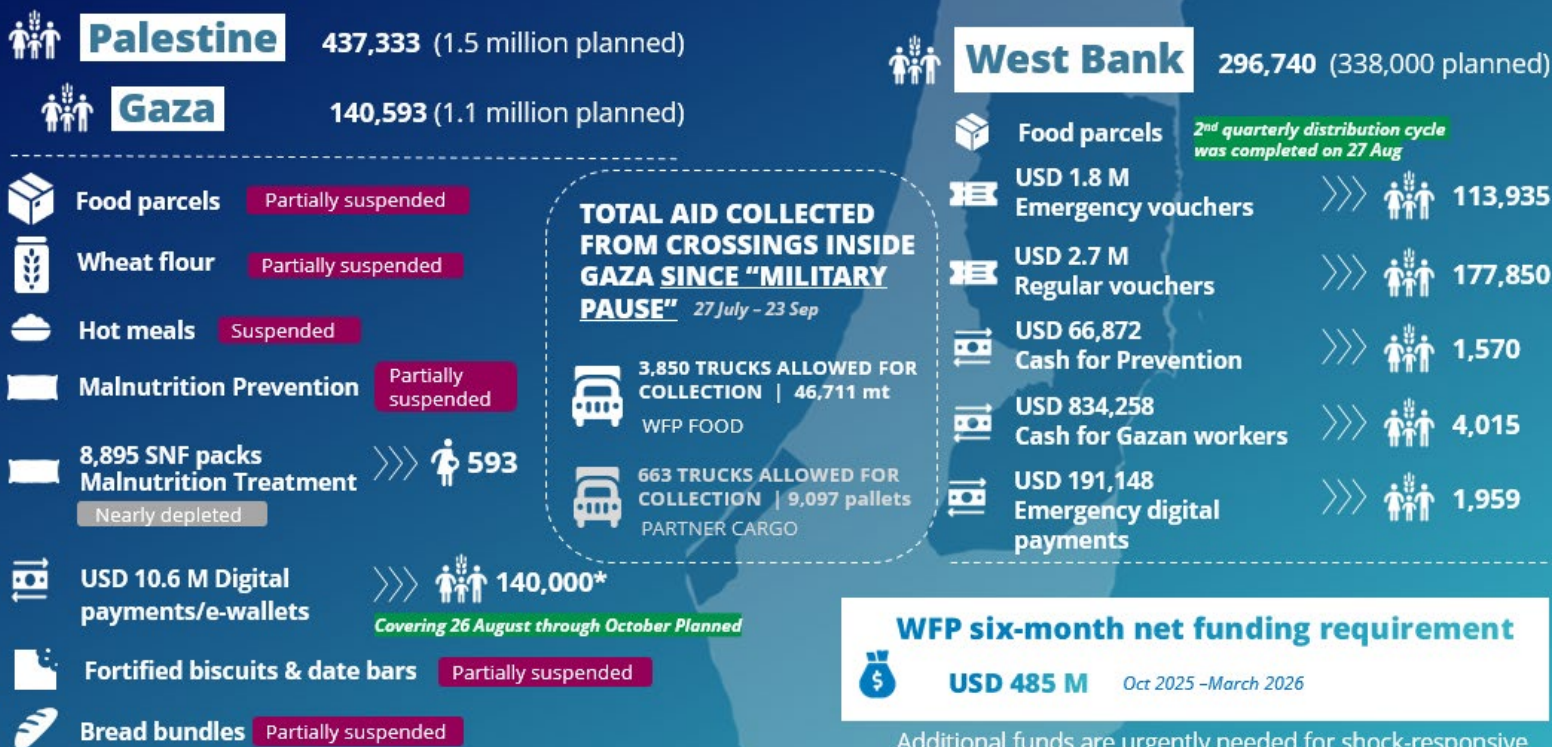


## HIGHLIGHTS

- Zikim crossing remains closed, cutting off northern Gaza from aid. Food is blocked from communities where famine is confirmed, leaving families trapped under bombardment. Food and aid is available at Gaza's borders, but without access it cannot reach those most in need.
- Despite severe access constraints, insecurity, and looting incidents alongside WFP convoys, WFP transported more than 46,000 mt of food, one-third of all humanitarian cargo entering Gaza between July and September, averaging nearly 100 trucks per day (800 mt). WFP's sustained deliveries via convoys through both the Northern and Southern crossings helped to reduce food prices, improve household access to meals and stabilize food availability in Gaza. Despite continuous access constraints, Household food consumption rose from 1 meal per day in July to nearly 2 meals per day in September, though dietary diversity remains limited.
- While local markets still offer some staple foods, people cannot survive on these alone. Meat, vegetables, and dairy products which are normally supplied through commercial channels, remain unavailable. A ceasefire and open crossings, reliable conditions for convoys, and a steady flow of diverse food supplies, are critical to save lives and alleviate people's despair.

## SEPTEMBER IN NUMBERS Reporting period 1-20 September 2025



### WFP six-month net funding requirement

**USD 485 M** Oct 2025 – March 2026

Additional funds are urgently needed for shock-responsive CBT assistance in the West Bank.

Numbers are subject to change due to the finalization of the month's reporting figures from partners. The total beneficiaries figure accounts for overlap between people receiving more than one type of assistance. SNF: specialized nutritious food.

## SITUATION UPDATE

- **Gaza City is under the heaviest wave of Israeli attacks** since the war began, marked by heavy bombardment, ground incursions, and mass displacement, severely impacting civilians and aid delivery.
- **Nearly 390,000 displacement movements have been recorded since mid-August**, with families sleeping on the streets or in makeshift shelters.
- **Around 28,000 cases of acute malnutrition among children under five were recorded** in July-August, exceeding the first six months of 2025, while **mass displacement** has **disrupted** services, **with 21 of 50 nutrition treatment centers in Gaza City closed**.
- Following the [incident](#) near **the Allenby Bridge** border crossing between Jordan and the West Bank on 18 September and the closure of the bridge, **WFP and UN staff and humanitarian cargo rotations through the crossing were severely impacted**. All convoys from Jordan remain on hold.
- The Allenby Bridge is one of four upstream routes for WFP cargo into Gaza; WFP is closely monitoring the situation to assess operational impacts and explore alternatives. Additionally, following **the closure of Zikim crossing on 12 September, WFP has been exploring alternative routes to the north**, including access via Karni.

## WFP OPERATIONS

### General Food Assistance in Gaza (1-20 Sep)

- WFP has been unable to deliver General Food Assistance in Gaza. Although some commodities are entering, they are not reaching WFP distribution points due to insecurity and access restrictions. WFP teams continue to clear roads and explore alternative transport methods to reach intended destinations.
- A limited number of nutrition supply deliveries have been completed. Under the malnutrition treatment programme, partners have reached 593 malnourished pregnant and breastfeeding women (PBW) thus far in September. WFP is assessing alternative delivery methods to expand distribution and reduce the risk of looting.
- On 26 August, WFP resumed digital payments/e-wallet activities in Gaza, prioritizing households with limited access to in-kind food. Each household is targeted to receive ILS 1,250 (USD 372) as a monthly payment to cover basic needs, with the goal to assist nearly 140,000 people in Gaza within the current round in October. Initial market monitoring showed that most recipients prioritized food purchases, temporarily improving food security. However, the cash was depleted within days, leaving families hungry and reliant on coping strategies. A new round will soon begin for an additional 150,000 people, focusing on families in or moving from the north.

### General Food Assistance in the West Bank (1-20 Sep)

- In September so far, 113,935 people received emergency food vouchers as part of WFP's shock response plan. WFP's regular voucher programme supported 177,850 vulnerable people (ILS 50/USD 14.5 per person) to improve food security and dietary diversity.
- Through the Cash for Prevention Programme aimed at maternal and child health, 1,570 women received cash top-ups (ILS 128/USD 37.12 per woman) to meet higher nutritional needs.
- 4,015 Gazan workers stranded in the West Bank received cash assistance to enable them to purchase nutritious food from local shops.



## SUPPLY CHAIN

- Kissufim has been open since 15 September as an alternative entry point to Zikim crossing. However, it does not provide adequate access to northern Gaza, due to its limited capacity and insecurity which disrupt cargo collection and prevent additional deliveries.
- Between 1 and 23 September, WFP moved 740 trucks carrying 15,636 mt of food through the various corridors.
- Inside Gaza, deliveries in September included:



## CLUSTERS AND COMMON SERVICES



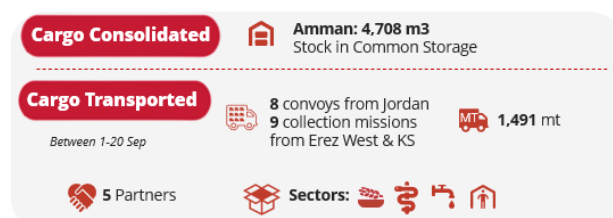
### Food Security Sector (FSS)

- As of 22 September, 20 partners (excluding WFP) delivered 532,000 daily meals through 138 kitchens across the Gaza Strip, utilizing limited commodities previously delivered. This is a significant decrease from one million daily meals served in April.
- FSS Partners continue to scale up assistance in south/central Gaza in response to the increasing needs due to the ongoing displacement from the north.
- Newly displaced communities in the "humanitarian zone" of Khan Younis highlighted urgent needs for cooking gas and food. In response, the sector is mobilizing partners to expand cooked meal provision and support community ovens to ensure vulnerable people have access to affordable bread.



### Logistics Cluster (LC)

- Between 1 and 20 September, 1,088 pallets were collected in Gaza from Zikim and Karam Abu Salem/Kerem Shalom (KS) crossings, on behalf of four partners. Following Zikim's closure, the team is assessing Kissufim crossing's safety and feasibility for collections.
- Through the Jordan route, the Logistics Cluster facilitated access to two Government-to-Government (G2G) convoys. In total, 19 trucks offloaded food items at Zikim on behalf of one partner. The Cluster also facilitated six Back-to-Back (B2B) convoys of 82 trucks carrying health, WASH, and shelter items on behalf of four partners, of which 61 were offloaded at KS and the rest were rejected by Israeli authorities and returned.
- The West Bank corridor remains highly restricted. During the reporting period, three organizations sent 61 trucks of food, health, and WASH items to KS.
- From Egypt, the number of daily returned trucks remains high. During the reporting period, only 27 percent of approved trucks managed to offload at KS.



THANK YOU TO OUR PARTNERS FOR THEIR CONTINUED SUPPORT