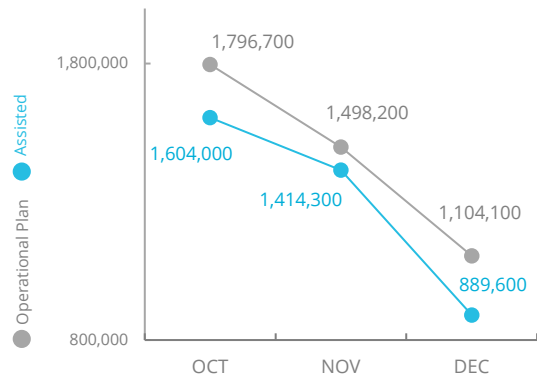


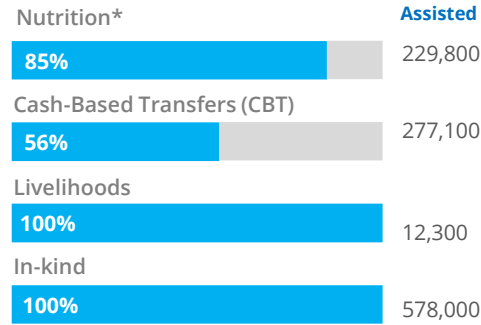
Nigeria

PEOPLE ASSISTED



OPERATIONAL PROFILE

People assisted (December)



* The Nutrition response includes the Multi-sectoral nutrition programme

WFP Response
The operation is likely to be impacted by negative trends in the operating environment, due to significant deteriorations in the security situation. Food prices continue to increase, impacting the cost of WFP operation. Nigeria is one of the countries of highest concern in terms of food insecurity, requiring the most urgent attention.

SOURCE: WFP, JAN 2022

FUNDING

Nigeria Country Strategic Plan

February - July 2022 (6 months)

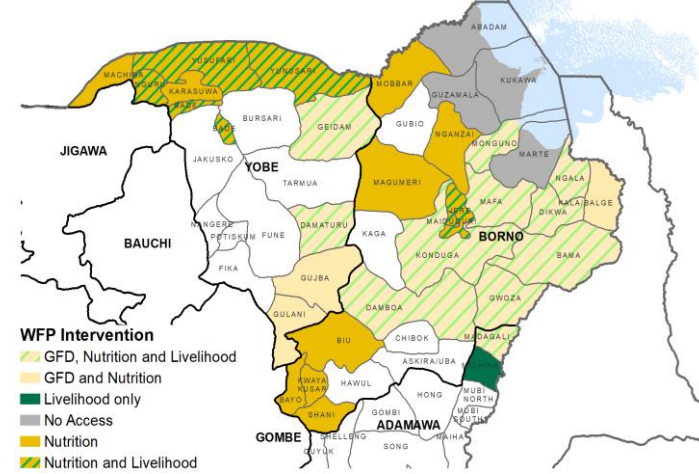
Net funding requirements
US\$230.9m

LEVEL 3 RESPONSE
Requirements: USD 255m

90%

SOURCE: WFP, JAN 2022

WFP OPERATIONAL PRESENCE



SOURCE: WFP, SEP 2021

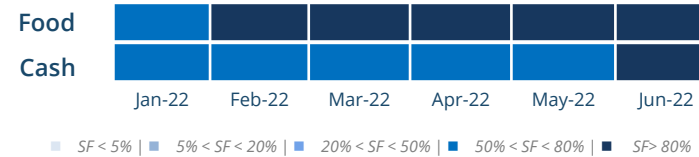
AVERAGE MONTHLY FUNDING REQUIREMENTS

(6 Months - US\$)

8.8m

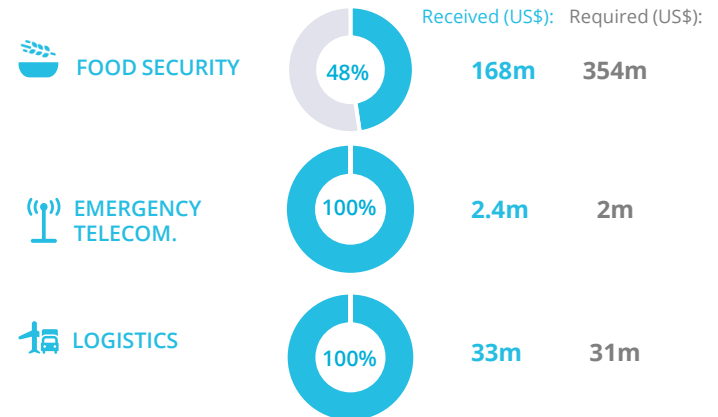
5.4m

EXPECTED SHORTFALLS



SOURCE: WFP, JAN 2022

WFP-LED AND CO-LED SECTORS

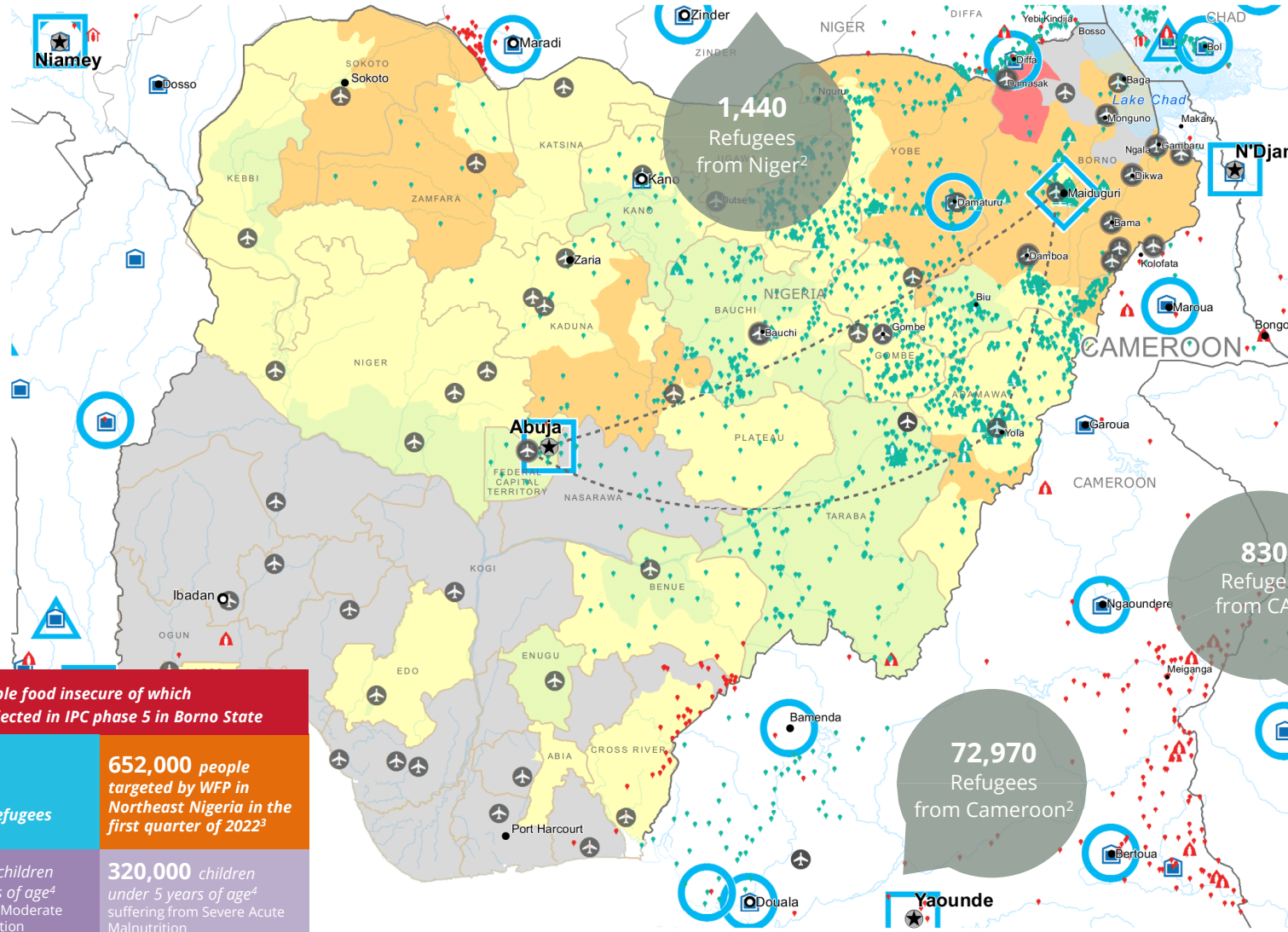


SOURCE: WFP, FTIS, JAN 2022

UN HUMANITARIAN AIR SERVICE (UNHAS)



SOURCE: WFP/UNHAS, JAN 2022



3.5m people food insecure of which 13,550 projected in IPC phase 5 in Borno State

3m IDPs² And 77,140 Refugees

652,000 people targeted by WFP in Northeast Nigeria in the first quarter of 2022³

515,000 children under 5 years of age⁴ suffering from Moderate Acute Malnutrition

320,000 children under 5 years of age⁴ suffering from Severe Acute Malnutrition

¹ Cadre Harmonisé Nov 2021, period June-August 2022, ² Internally Displaced People (IDPs), UNHCR, December 2021, ³ WFP Nigeria, ⁴ HRP, 2021

<p>CH Food Security Classification June - August 2022 (Projection)</p> <ul style="list-style-type: none"> No data Crisis (Phase3) Minimal (Phase1) Stressed (Phase2) Emergency (Phase 4) Famine (Phase5) 	<ul style="list-style-type: none"> Country Office Area Office Sub Office Field Office UNHAS Connection Warehouse IDP Camp IDP Center IDP Location Refugee Camp Refugee Center Refugee Location National Capital Major Town Intermediate Town Small town UNHAS Route International Boundary Province boundary River Surface Waterbody
---	---

Sources: WFP, UNGIWG, GAUL, GLCSC, OCHA, UNHCR.

The designations employed and the presentation of material in the map(s) do not imply the expression of any opinion on the part of WFP the delimitation of its frontiers or boundaries.
© World Food Programme 2022.

WFP LEVEL 3 EMERGENCY
SINCE 11 AUGUST 2016

SITUATION REPORT and COUNTRY BRIEF