

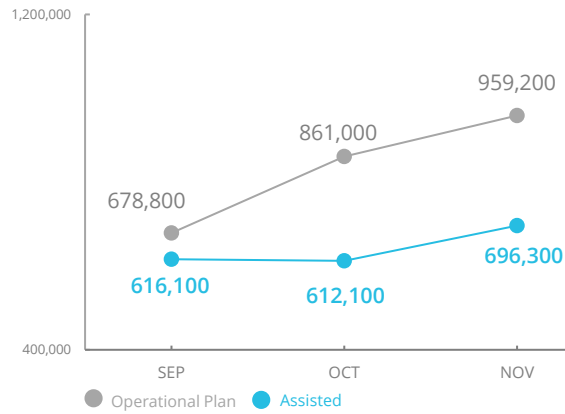


World Food Programme

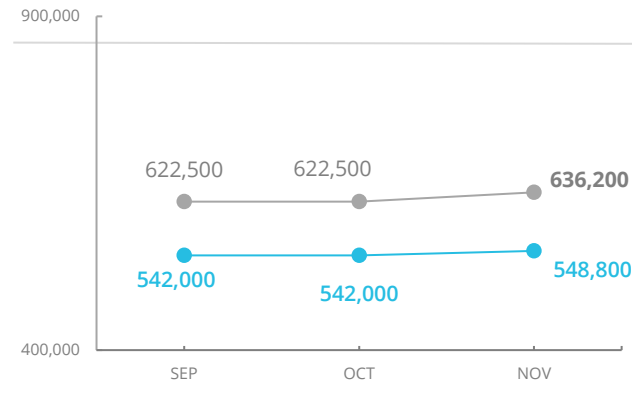
Emergency Dashboard | December 2021

Burkina Faso

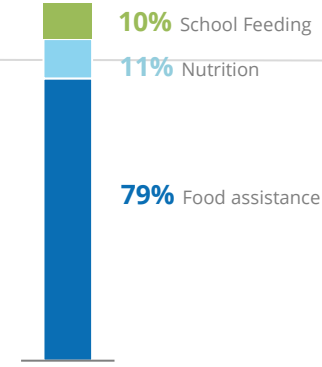
PEOPLE ASSISTED Country Strategic Plan (CSP)



PEOPLE ASSISTED Crisis



OPERATIONAL PROFILE



FUNDING

(Burkina Faso CSP) - Emergency Response:

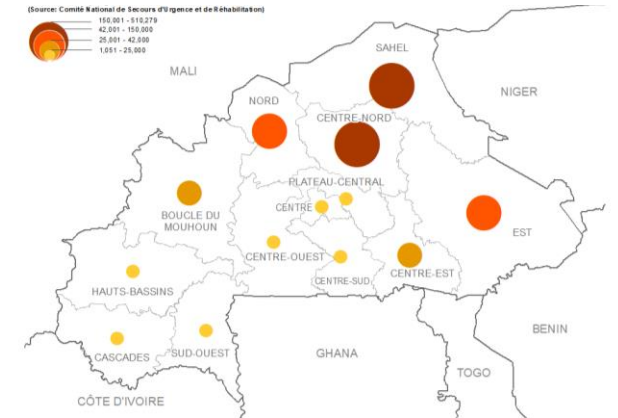
January - June 2022

Net funding requirements (6 months)

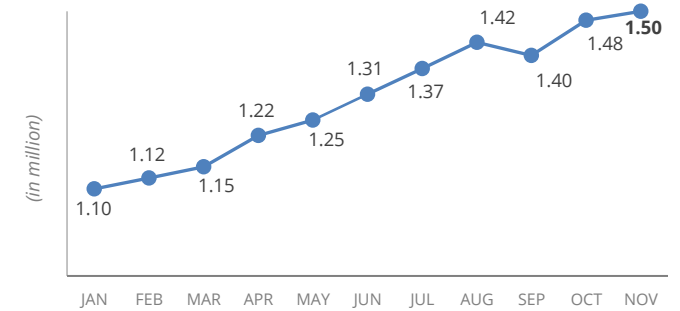
US\$ 117.6m



INTERNAL DISPLACEMENT CONCENTRATION AS OF NOVEMBER 2021

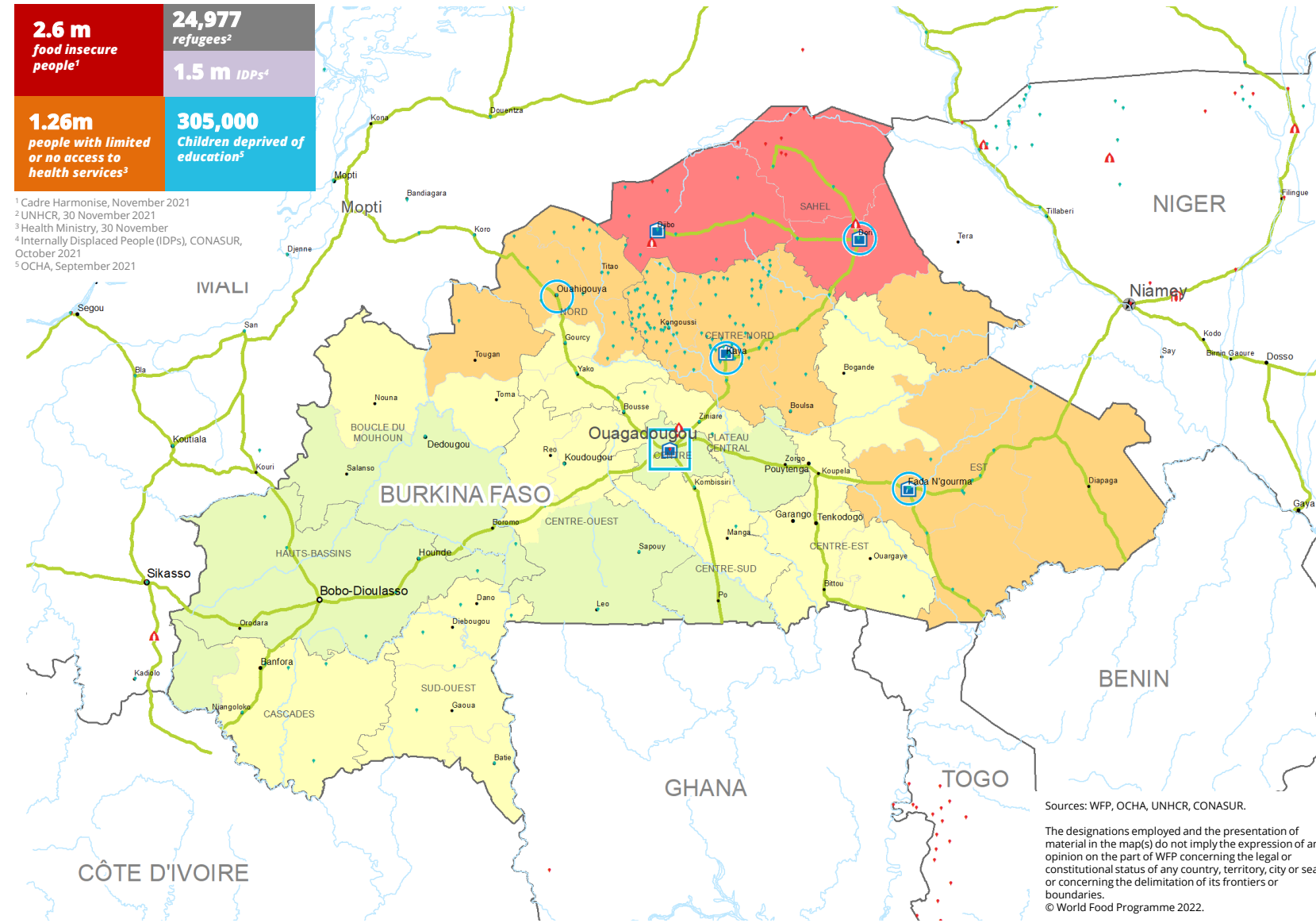


INTERNAL DISPLACEMENT FIGURES 2021



- 2.6 m** food insecure people¹
- 24,977** refugees²
- 1.5 m** IDPs⁴
- 1.26m** people with limited or no access to health services³
- 305,000** Children deprived of education⁵

¹ Cadre Harmonise, November 2021
² UNHCR, 30 November 2021
³ Health Ministry, 30 November
⁴ Internally Displaced People (IDPs), CONASUR, October 2021
⁵ OCHA, September 2021



Sources: WFP, OCHA, UNHCR, CONASUR.

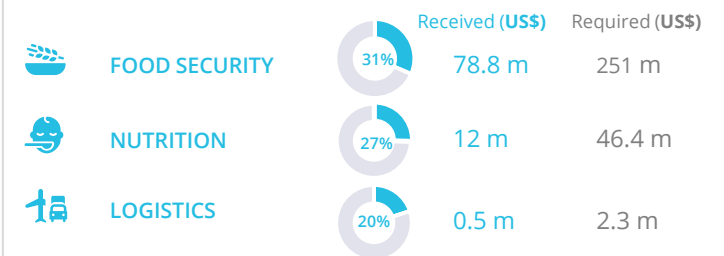
The designations employed and the presentation of material in the map(s) do not imply the expression of any opinion on the part of WFP concerning the legal or constitutional status of any country, territory, city or sea, or concerning the delimitation of its frontiers or boundaries.
© World Food Programme 2022.

CH Food Security Classification June - August 2022 (Projection)

- No data
- Minimal (Phase1)
- Stressed (Phase2)
- Crisis (Phase3)
- Emergency (Phase 4)
- Famine (Phase5)

- Country Office
- Sub Office
- Field Office
- IDP Camp
- IDP Center
- IDP Location
- Refugee Camp
- Refugee Center
- Refugee Location
- Warehouse
- Road Supply Route
- National Capital
- Major Town
- Intermediate Town
- Small town
- International Boundary
- Region Boundary
- River

WFP-LED AND SUPPORTED CLUSTERS



UN HUMANITARIAN AIR SERVICES (UNHAS)



WFP LEVEL 3 EMERGENCY

Level 2 Emergency since **10 May 2019**
part of the Central Sahel Level 3 Emergency since **09 September 2019**

SITUATION REPORT and COUNTRY BRIEF



SAVING LIVES
CHANGING LIVES