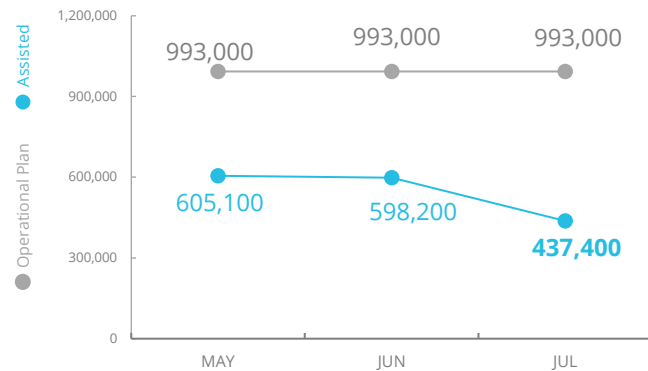


# Cameroon (North-West – South-West)



## PEOPLE ASSISTED BY WFP

Food Assistance



## OPERATIONAL PROFILE

People reached (July)

### General Food Distribution (in-kind)

45%

### Cash Based Transfers

91%

### Nutrition

71%

### Resilience

42%

### Targeted

584,200

75,800

115,800

62,000

### By Sex

54%

46%

SOURCE: WFP, SEP 2021



## FUNDING

Cameroon Country Strategic Plan (CSP)

September – February 2022 (6 months)

**US\$ 46m**

Net funding requirements

2020 COUNTRY STRATEGIC PLAN (CSP)

Requirements: USD 69.6m

66%

SOURCE: WFP, SEP 2021

## AVERAGE MONTHLY FUNDING REQUIREMENTS (6 months) (US\$)

Entire Country Strategic Plan

**8.9m**

**2.0m**

### EXPECTED SHORTFALLS



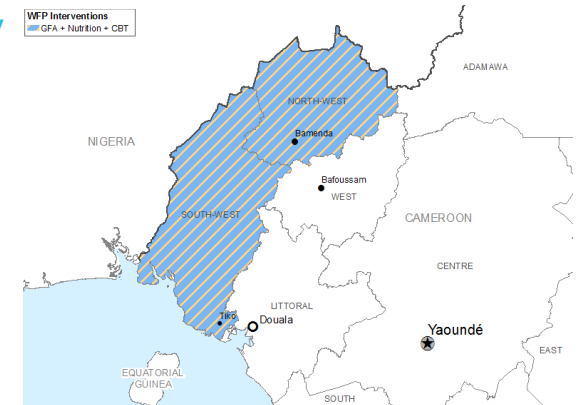
Sep-21 Oct-21 Nov-21 Dec-21 Jan-22 Feb-22

SF < 5% | 5% < SF < 20% | 20% < SF < 50% | 50% < SF < 80% | SF > 80%

SOURCE: WFP, SEP 2021

## OPERATIONAL PRESENCE

### By Activity



SOURCE: WFP, SEP 2021

## WFP-LED AND SUPPORTED CLUSTERS

### FOOD SECURITY AND LIVELIHOODS CLUSTER



Received US (\$):

**22.6m**

Required (US\$):

**73m**

### NUTRITION CLUSTER



**3.8m**

**26m**

SOURCE: FTS, SEP 2021

## UN HUMANITARIAN AIR SERVICE (UNHAS)

Passengers Transported (UNHAS)

**2433 passengers**

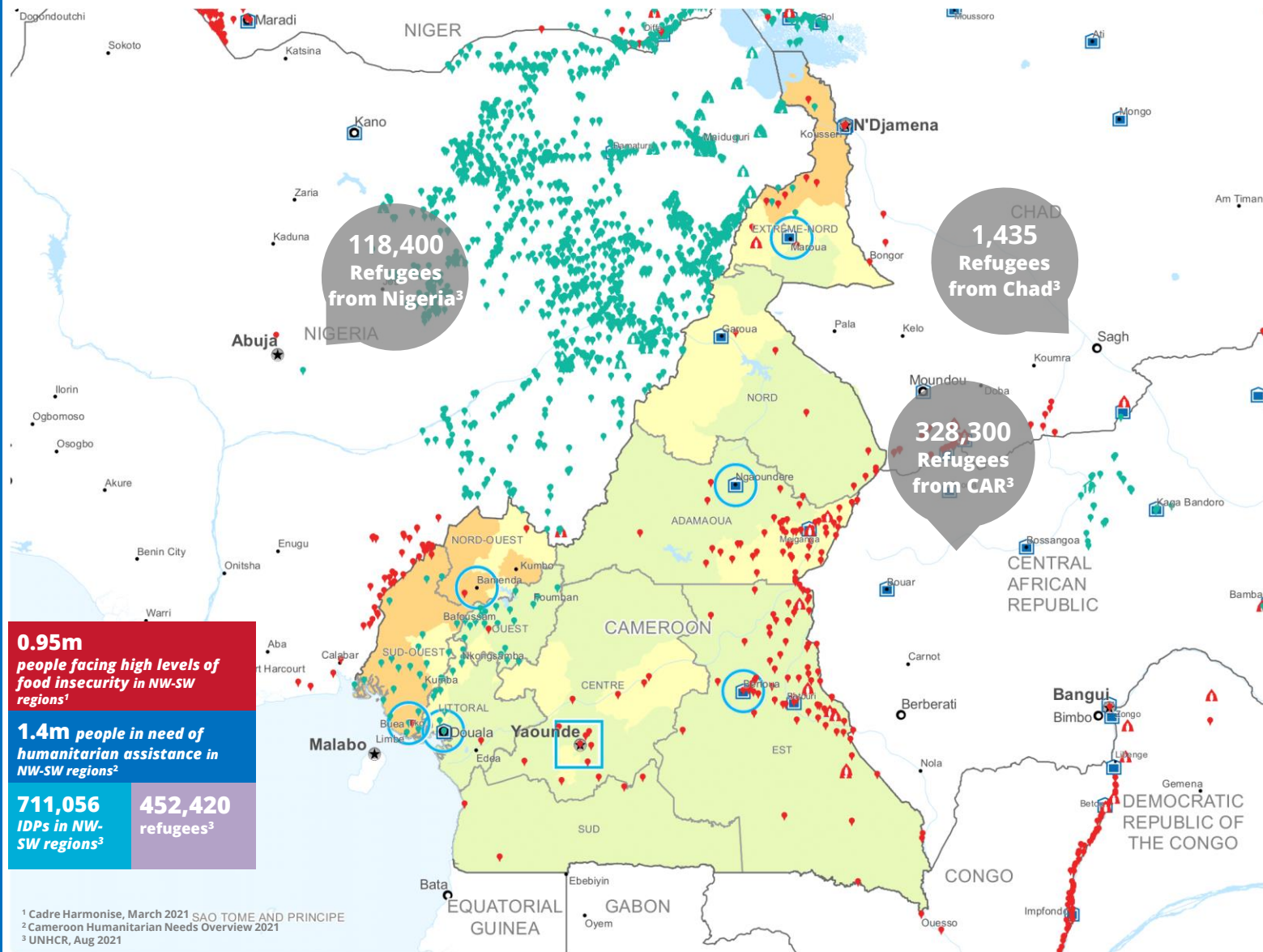
As of July 2021



UNHAS budget: US\$4.5m

Shortfall: US\$0.9m  
(Sep 2021)

SOURCE: WFP, SEP 2021



**0.95m**  
people facing high levels of food insecurity in NW-SW regions<sup>1</sup>

**1.4m** people in need of humanitarian assistance in NW-SW regions<sup>2</sup>

**711,056** IDPs in NW-SW regions<sup>3</sup>

**452,420** refugees<sup>3</sup>

<sup>1</sup> Cadre Harmonise, March 2021 SAO TOME AND PRINCEPE  
<sup>2</sup> Cameroon Humanitarian Needs Overview 2021  
<sup>3</sup> UNHCR, Aug 2021

CH Food Security Classification  
June - August 2021

No data  
Crisis (Phase3)  
Minimal (Phase1)  
Stressed (Phase2)  
Emergency (Phase 4)  
Famine (Phase5)

Country Office  
Sub Office  
Field Office

IDP Camp  
IDP Center  
IDP Location

Refugee Camp  
Refugee Center  
Refugee Location

Warehouse

National Capital  
Major Town  
Intermediate Town  
Small town

International Boundary  
Region Boundary  
River

