

WFP CHAD

EMERGENCY ASSISTANCE IN SUPPORT OF THE GOVERNMENT'S RESPONSE

External Situation Report #24

SEPTEMBER 2025

HIGHLIGHTS



WFP CRISIS RESPONSE IN CHAD

- Chad continues to face a complex humanitarian situation, with a persistent influx of new arrivals placing growing pressure on already limited natural and humanitarian resources. Since the start of the Sudan crisis in April 2023, over **1.2 million people** have crossed the border from Sudan into the east of Chad (**877,535 refugees and 313,301 returnees**). WFP anticipates that between **30,000 and 50,000 additional refugees** may cross into Chad by the end of 2025, as a result of the ongoing fighting in Darfur.
- WFP **lean season response has been significantly reduced**, from supporting 1 million people in 2024 to **118,000 in 2025** due to funding constraints. The assistance focused on **three provinces** (Kanem, Barh El Gazel and Ouaddai) targeting the most vulnerable populations in some of the **IPC Phase 3** areas to address immediate food needs and prevent further deterioration of food security.
- Given that anticipatory action is triggered based on early warning thresholds, preparatory work is ongoing to prepare for **potential anticipatory action protocol activation**, including targeting and early warning messages, in partnership with the Government. WFP aims to assist **100,000 people in N'Djamena with anticipatory action**.
- WFP remains concerned as **30 percent of the Sudan operation is delivered across the border from Chad**. WFP needs balanced assistance on both sides of the border to avoid fueling tensions.

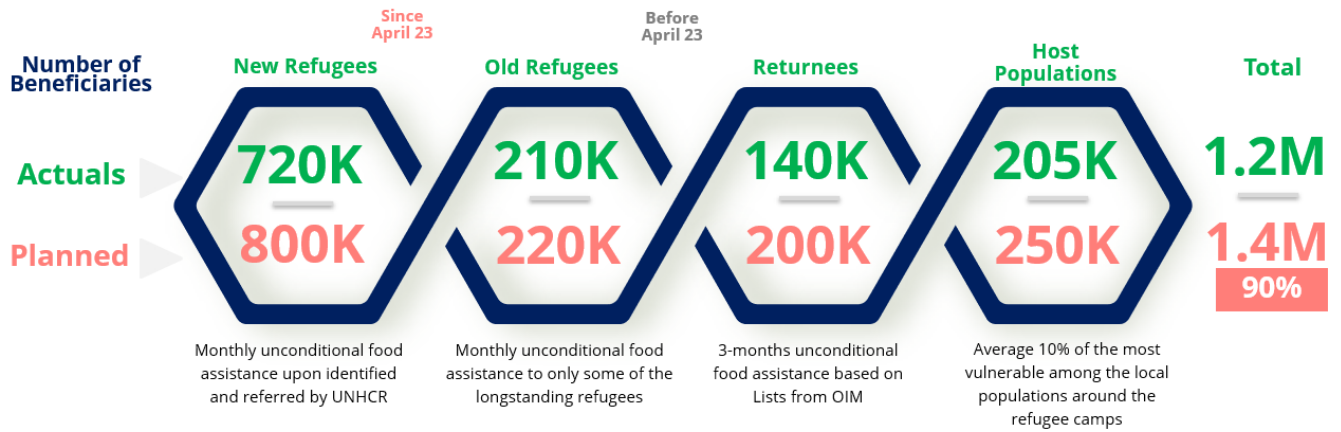


2025 EMERGENCY RESPONSE: 1.4 MILLION PEOPLE TARGETED

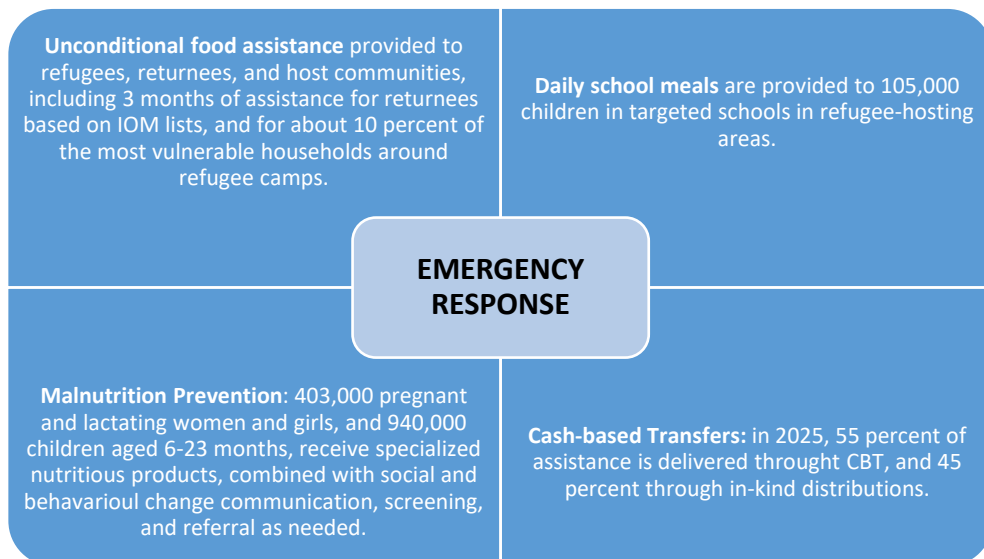
CSP 2024 – 2028: 4.8 MILLION PEOPLE TARGETED OVERALL

URGENT FUNDING NEEDS FOR THE ENTIRE OPERATION OCTOBER – MARCH 2026: US\$ 74.3 MILLION

EMERGENCY RESPONSE: ACTUAL ASSISTANCE FIGURES



- WFP partnered with NGOs, local civil society organizations, government technical services and UN Agencies to deliver assistance. Despite some operational challenges, **90 percent of the targeted caseload has been reached with the assistance.** Unreached beneficiaries are mostly linked to continued movements of refugees and returnees who cannot be found during distribution periods.



TRANSITIONING TO VULNERABILITY-BASED ASSISTANCE

- WFP's gradual **transition from status-based to vulnerability-based assistance** will contribute to reducing overall humanitarian needs, as well as building resilience and social cohesion, and interconnectedness at the community level. To support this process, a vulnerability and needs assessment was carried out during the first half of 2025 in the four eastern provinces, as well as community consultations with new refugees, pre-Sudan crisis refugees, returnees and host communities, with support from the UNHCR/WFP hub.
- Preliminary results of the study highlight **high food insecurity** (54 percent of households, including 14 percent severely food insecure), **significant protection needs, limited land access, and underutilized skills in agriculture, trade, livestock and masonry.** Based on these results, **WFP plans from 2026 to reduce general food assistance significantly** and focus more on refugee economic empowerment, with the pace defined by available resources. The objective is to prioritize emergency assistance for the most vulnerable refugees, returnees, and host communities.

Thank you to all donors who have contributed to WFP's response 2024 - 2025:

Canada



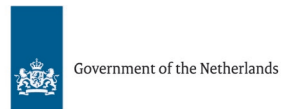
MINISTRY OF FOREIGN AFFAIRS OF DENMARK
DANIDA | INTERNATIONAL
DEVELOPMENT COOPERATION



From
the People of Japan



Multilateral
Donors



Private
Donors



Contacts

Sarah GORDON-GIBSON, Country Director | sarah.gordon-gibson@wfp.org

Marzia PASQUALI, Head of Partnerships and Operational Information Management | marzia.pasquali@wfp.org

For further information

Visit WFP's Chad Country Page at www.wfp.org/countries/chad