



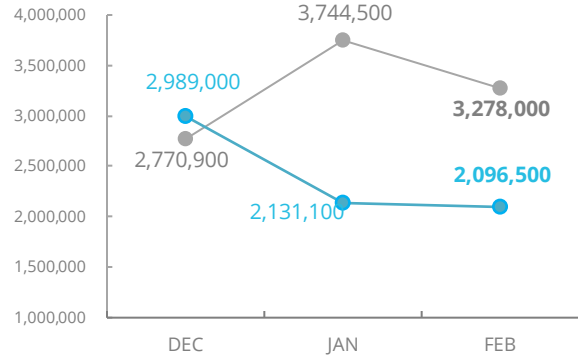
World Food Programme

Emergency Dashboard | March 2021

Central Sahel



PEOPLE ASSISTED Across Burkina Faso, Mali and Niger



SOURCE: WFP, 20 APR 2021

Operational Plan Assisted



COVID-19 OPERATIONAL IMPACT

Ongoing Alternate Modality Partially Suspended Suspended

BURKINA FASO

- General Food Assistance (GFA) and Nutrition in emergencies: Mitigation measures in place
- Regular Nutrition Programming: Mitigation measures in place
- Food for Assets (FFA)
- School feeding activities

MALI

- General Food Assistance (GFA): Mitigation measures in place
- Nutrition: Mitigation measures in place
- Food for Assets: Replacing community-based activities with individual household activities
- School feeding activities

NIGER

- General Food Assistance (GFA): Mitigation measures in place
- Nutrition: Mitigation measures in place
- Food for Assets (FFA)
- School feeding activities

WFP Response

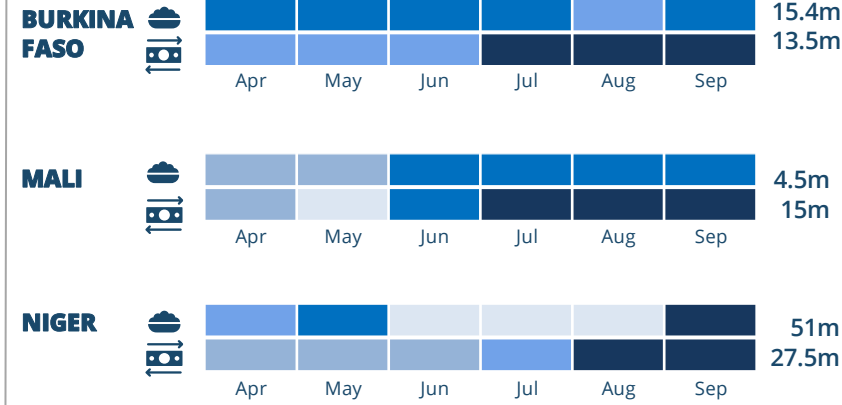
Beneficiaries reached

578,300	83%
45,350	70%
66,700	61%
47,700	89%
230,500	87%
0	0%
108,000	65%
48,800	27%
229,800	51%
65,300	48%
142,000	52%
80,700	100%

EXPECTED PIPELINE BREAKS (US\$)

SOURCE: WFP, 07 MAY 2021

6 month shortfalls



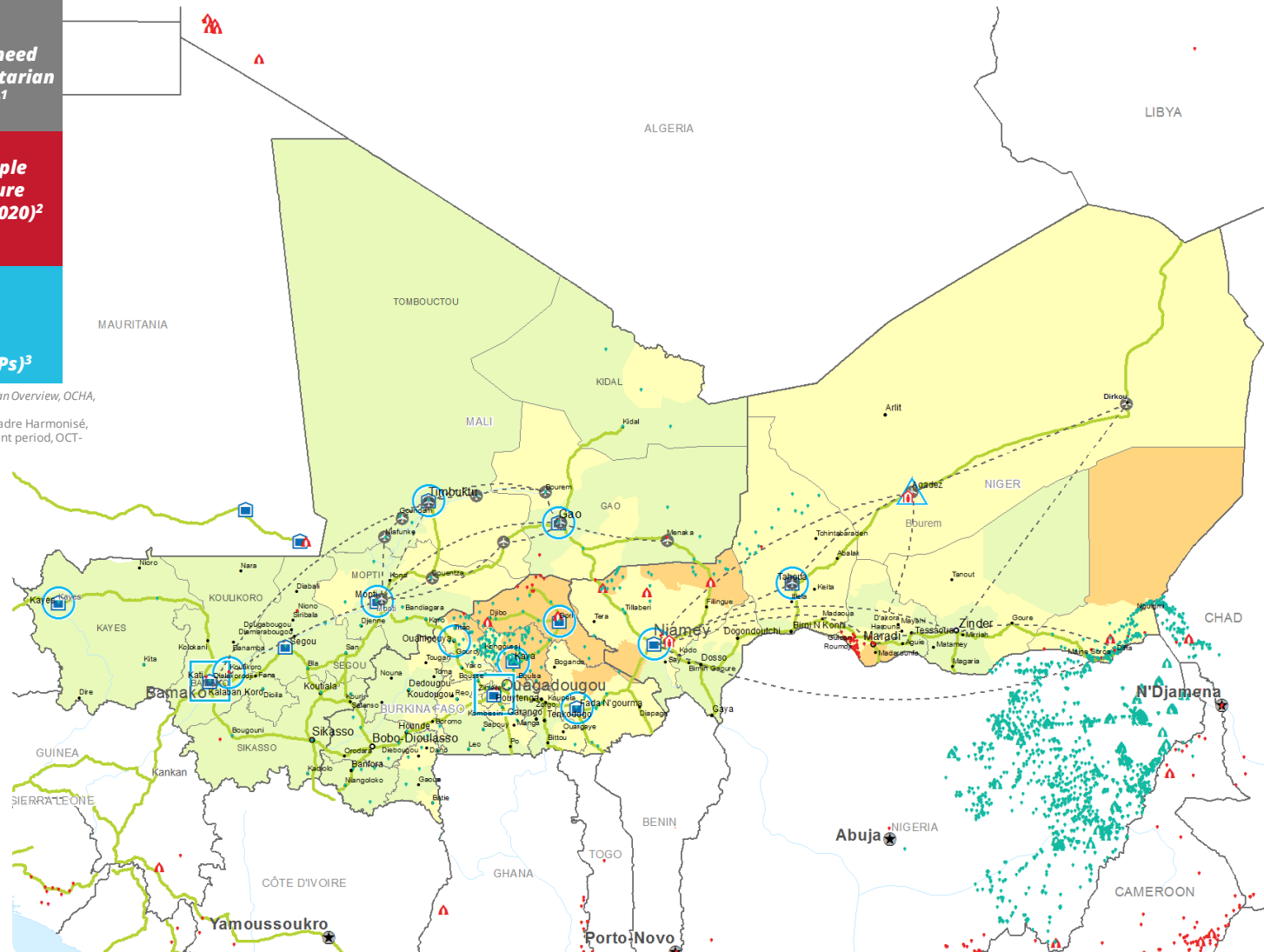
Monthly shortfall: SF < 5% | 5% < SF < 20% | 20% < SF < 50% | 50% < SF < 80% | SF > 80%

13.4m people in need of humanitarian assistance¹

3.7m people food insecure (Oct-Nov 2020)²

1.6m Internally Displaced People (IDPs)³

¹ Global Humanitarian Overview, OCHA, April 2020
² November 2020 Cadre Harmonisé, IPC Phase 3-4, current period, OCT-NOV 2020
³ UNHCR DEC 2020



FUNDING Burkina Faso, Mali and Niger Country Strategic Plans

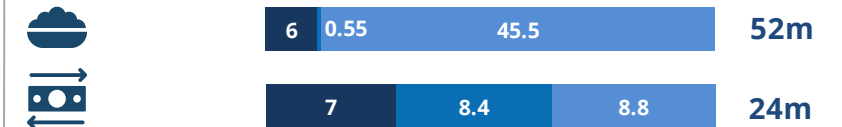
May - October 2021

Net funding requirements (needs based) (US\$)

BURKINA FASO	144m	} 333m
MALI	87m	
NIGER	101m	

SOURCE: WFP, 23 APR 2021

AVERAGE MONTHLY REQUIREMENTS (US\$) - May



KEY FIGURES

	BURKINA FASO	MALI	NIGER	
Total Population (in millions)	20.9m	20.5m	22.8m	UNFPA, HRP, JUN 2020
Internally Displaced People	1,075,000	311,200	298,500	UNHCR, Government, DEC 2020
Refugees (does not include returnees)	20,200	47,400	233,100	UNHCR, Government, DEC 2020
Food Insecure People (CH Phases 3-5)	2,020,000	436,900	1,228,800	November 2020 Cadre Harmonisé, IPC Phase 3-4, current period, OCT-NOV 2020
People Prioritized by WFP	2,550,000	2,500,000	2,600,000*	Planification figures (WFP COUNTRY STRATEGIC PLANS) *Niger 2021 data is not yet available

WFP LEVEL 3 EMERGENCY SINCE 09 SEPTEMBER 2019

SITUATION REPORTS and COUNTRY BRIEFS:

BURKINA FASO
MALI
NIGER



CH Food Security Classification October - December 2020

- No data
- Minimal (Phase1)
- Stressed (Phase2)
- Crisis (Phase3)
- Emergency (Phase 4)
- Famine (Phase5)

- Country Office
- Sub Office
- Field Office
- IDP Camp
- IDP Center
- IDP Location
- Refugee Camp
- Refugee Center
- Refugee Location
- Warehouse
- UNHAS Connection
- UNHAS Route
- Road Supply Route
- National Capital
- Major Town
- Intermediate Town
- Small town
- International Boundary
- Region Boundary
- River

Produced by the WFP Operations Centre (OPSCEN) jointly with Country Office and Regional Bureau Dakar. This dashboard is based on best available information at the time of production. Future updates may vary as new information becomes available.

SAVING LIVES
CHANGING LIVES