



World Food Programme

Afghanistan



KEY FIGURES



12,870,100
People reached



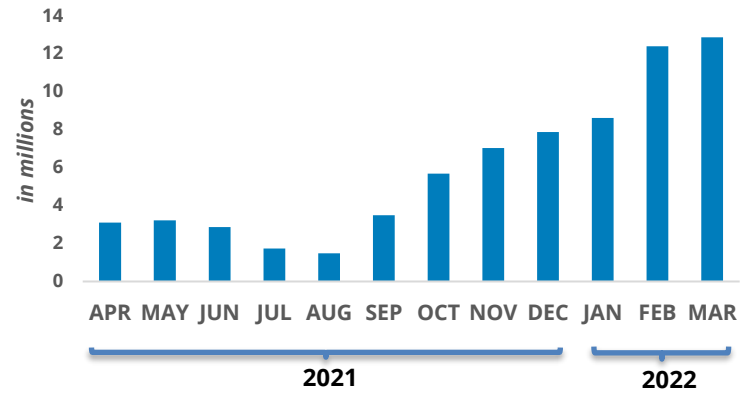
33,114,500
Cash transfers disbursed



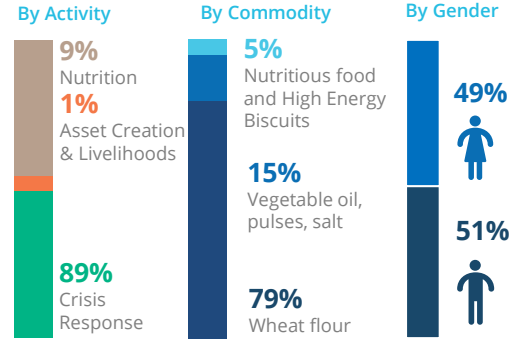
116,100 mt
Food distributed



PEOPLE REACHED PER MONTH



OPERATIONAL PROFILE March 2022



SOURCE: WFP, 11 APRIL 2021



FUNDING

Afghanistan Country Strategic Plan (CSP)
01 July 2018 – 30 June 2022
Overall CSP Value: US\$1b

Net Funding Requirements
May – October 2022

US\$1b

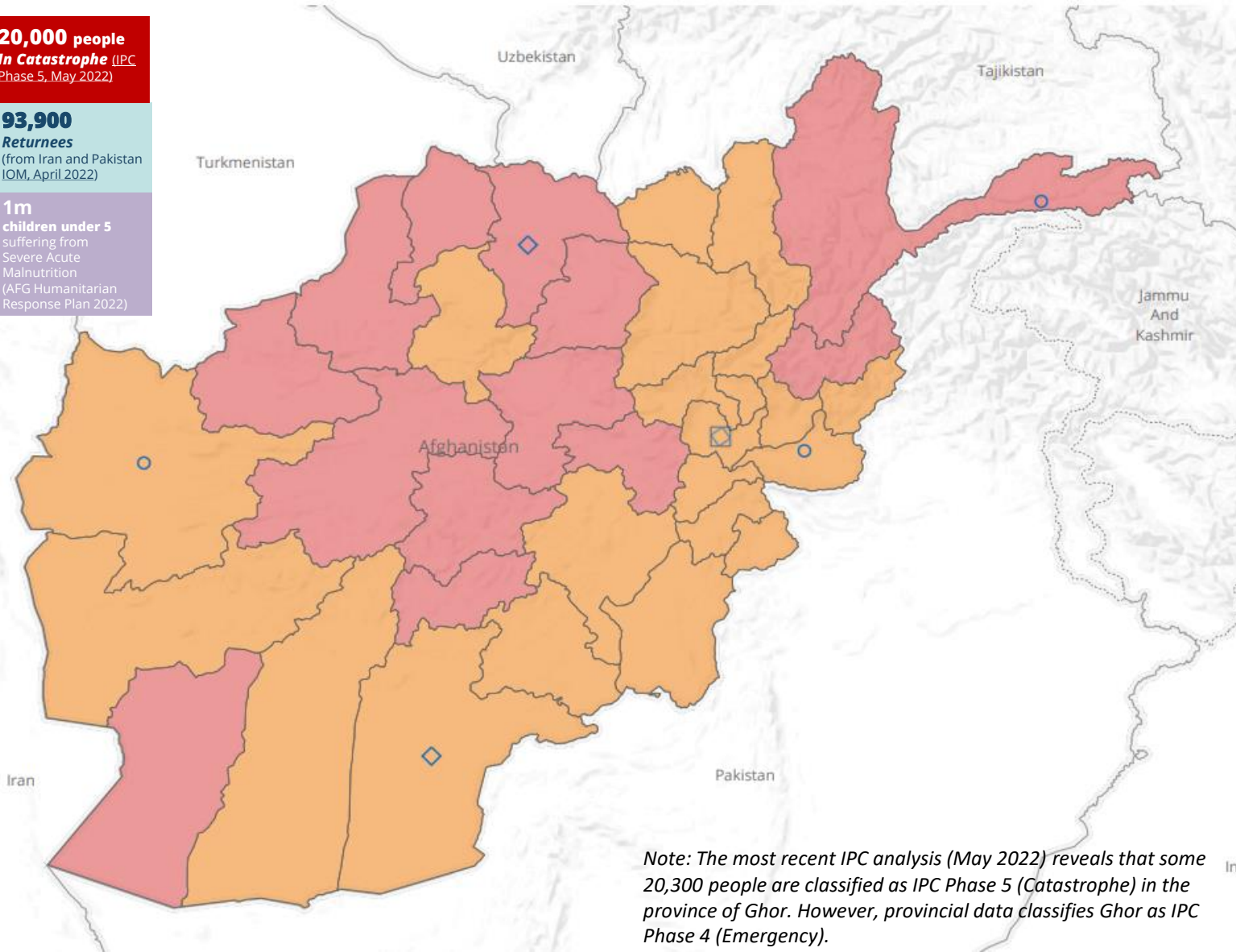
Shortfall (next 6 months)
US\$588m

52%

SOURCE: WFP, 11 APRIL 2021

Emergency Dashboard | April 2022

19.7m people in Crisis & Emergency (IPC Phase 3 & 4, May 2022)	20,000 people in Catastrophe (IPC Phase 5, May 2022)
822,500 New IDPs (OCHA, April 2022)	93,900 Returnees (from Iran and Pakistan IOM, April 2022)
2.2m children under 5 suffering from Moderate Acute Malnutrition (AFG Humanitarian Response Plan 2022)	1m children under 5 suffering from Severe Acute Malnutrition (AFG Humanitarian Response Plan 2022)

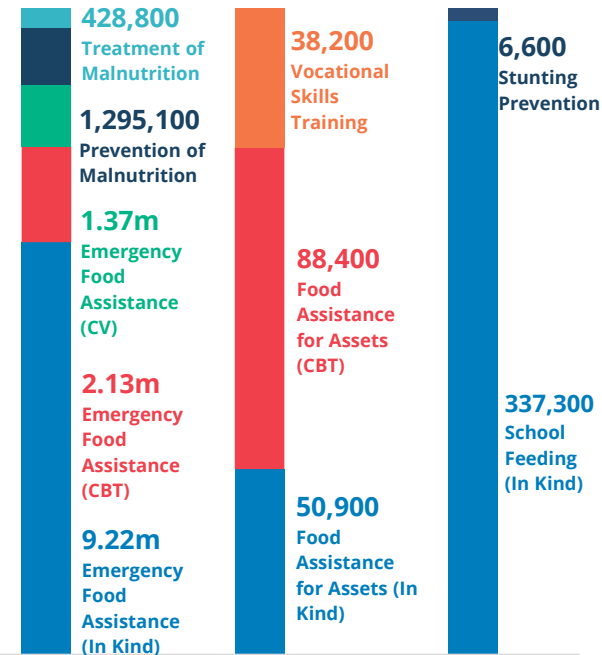


Note: The most recent IPC analysis (May 2022) reveals that some 20,300 people are classified as IPC Phase 5 (Catastrophe) in the province of Ghor. However, provincial data classifies Ghor as IPC Phase 4 (Emergency).

© 2022 Mapbox © OpenStreetMap



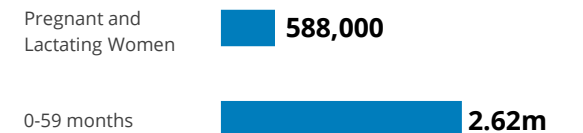
PEOPLE REACHED BY ACTIVITY



Crisis Response Asset Creation & Livelihoods Nutrition



MALNOURISHED PEOPLE REACHED



SOURCE: WFP, 11 APRIL 2022

WFP Emergency Classification: Corporate Scale-Up

[Situation Report and Country Brief](#)
[Afghanistan Country Strategic Plan](#)

Follow us @WFP_AsiaPacific for the latest news



SAVING LIVES
CHANGING LIVES

IPC Phases Nov 2021 - Mar 2022

- Crisis (Phase 3)
- Emergency (Phase 4)

WFP Offices

- COUNTRY OFFICE A..
- AREA OFFICE
- SUB OFFICE

- International boundaries
- Province boundaries
- Armistice or international administrative lines
- Other line separation

Sources: WFP, UNGIWG, GAUL, GLCSC, OCHA, MSNA/HNO, IOM

The designations employed and the presentation of material in the map(s) do not imply the expression of any opinion on the part of WFP concerning the legal or constitutional status of any country, territory, city or sea, or concerning the delimitation of its frontiers or boundaries.
© World Food Programme 2020.