



24 Oct 2024

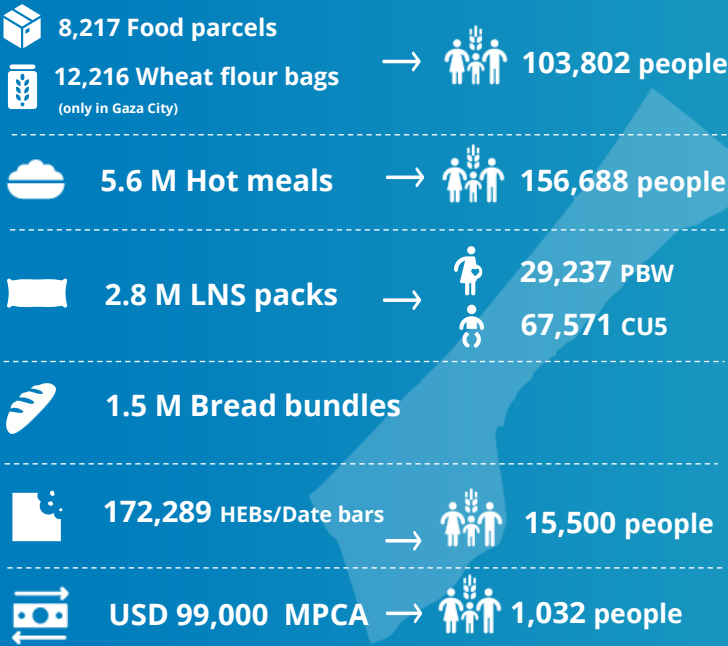
# WFP PALESTINE EMERGENCY RESPONSE

## External Situation Report 37

### HIGHLIGHTS

- Intense military operations continue in north Gaza, where thousands of families are trapped. For over 20 days, humanitarians have been denied access to reach areas such as Jabaliya, where needs are dire. The re-opening of northern crossings on 15 October allowed some aid to enter Gaza, but not enough to meet the rising needs.
- The latest food security data underscores the urgent need for increased humanitarian aid and improved access to avert a catastrophic situation. WFP has only been able to reach 23 percent of the 1.1 million people targeted for food assistance in Gaza in October so far.
- WFP is ready to augment its assistance, we have the food, the trucks coming in, staff on the ground, but we need expedited clearance processes for goods, more crossings opened, increased number of vetted drivers, timely authorizations for convoy movement within Gaza and basic safety conditions to protect responders and people receiving assistance.

### OCTOBER IN NUMBERS



**Palestine** 423,865 people (1.4 million planned)  
**Gaza** 261,522 people (1.1 million planned)

**West Bank** 162,343 people (338,000 planned)

USD 2.18 M → 160,719 people  
 USD 122,500 → 1,624 people

**WFP six-month net funding requirement USD 178.6 M**  
 Nov 2024 - April 2025

*These numbers are still subject to change due to the finalization of October 2024 reporting figures from partners. The total beneficiaries figure accounts for overlap between people receiving more than one type of assistance (LNS, HEB figures are not included). ACRONYMS: Pregnant and breastfeeding women and girls (PBWG) | Children under five (CU5) | High-Energy Biscuits (HEB) | Multipurpose Cash Assistance (MPCA) | Cash-based Transfers (CBT)*

### SITUATION UPDATE

- The Israeli military continues its ground offensive in North Gaza. Residents, schools and hospitals face repeated evacuation orders, causing multiple forced displacements. People are trapped without access to food, water, medicine, and vital services, as continued fighting and blocked roads prevent movement south.
- Humanitarian aid remains scarce due to lack of access across Gaza, raising the imminent risk of famine. WFP gradually resumed limited dispatches to support distributions in Gaza City. As the rest of North Gaza remains inaccessible, the food entering from northern crossings cannot be distributed in these areas.

Meanwhile, conditions in central Gaza are deteriorating as commercial goods are also restrained.



## WFP OPERATIONS



### General Food Assistance (GFA)

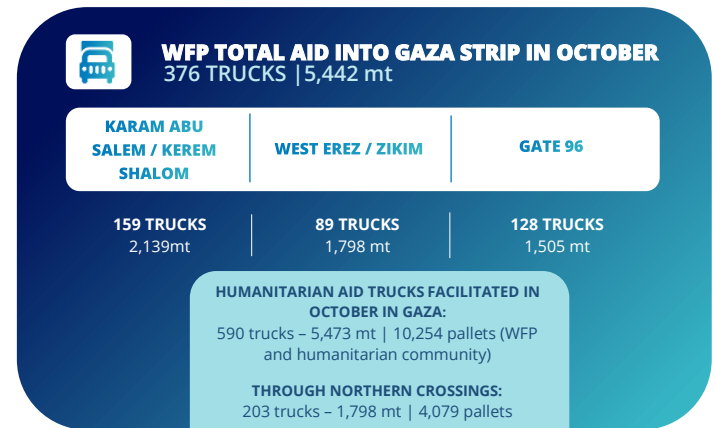
- In October, WFP reached **423,865 vulnerable individuals across Gaza and the West Bank** with food and cash assistance. In the **Gaza Strip**, WFP reached only **261,522 people** with reduced rations, due to the inability to replenish stocks amidst access constraints. *\*The total beneficiaries figure accounts for overlap between people receiving more than one type and duration of assistance. Monthly distribution figures are estimates and subject to change pending final beneficiary reconciliation.*
- In the Gaza Strip, WFP distributed **8,217 emergency food parcels** across Gaza - and **12,216 bags of wheat flour** in Gaza City - reaching **103,802 displaced people**. Of the parcels, 95 percent were distributed in Gaza City to those newly displaced from northern Gaza, while the remaining 5 percent were distributed in central Gaza using local partners' remaining stocks.
- North Gaza bakeries are closed.** Gaza City has four operating bakeries, needing fuel and yeast. South and Middle Gaza bakeries face daily supply issues that have forced them to reduce production, leading to overcrowding and scarcity. So far in October, **over 1.5 million bread bundles** (3,036 mt) have been delivered.
- WFP provided over **5.6 million hot meals** to **156,688 people**. In North Gaza, all community kitchens have shut down, while only eight kitchens are operational in Gaza City.
- 29,237 pregnant and breastfeeding women and girls (PBWG), along with 67,571 children under five (CU5)**, received over 2.8 million lipid-based nutritional supplement (LNS) packs as complementary feeding assistance to meet their increased nutritional needs.
- In October, 70 percent of the 1,000 families targeted for **multi-purpose cash assistance (MPCA)** redeemed their entitlements through four shops in Khan Younis, using e-wallets.
- In the **West Bank**, **162,343 people** redeemed their cash-based transfers, allowing them to purchase food items from local stores.



### Supply Chain

- West Erez (Zikim)** has re-opened on 15 October, but stringent security checks, delays at holding points, and multiple inspections limit the ability for bringing the aid into Gaza.
- Fence Road** is operational but constrained by the route's nature and a shortage of approved drivers.
- Karam Abu Salem/Kerem Shalom (KS)** is generally operational but hampered by insecurity and widespread looting. WFP is exploring alternative ways to dispatch goods.

- Since the start of the crisis, WFP has delivered 9,704 WFP trucks with at least 154,936 mt of food into Gaza.



## CLUSTERS AND COMMON SERVICES



### Food Security Sector

- Partners in the north are prioritizing newly displaced populations. Efforts are underway with other clusters to explore options for delivering multi-sectoral aid.
- In collaboration with the Health Cluster, attempts are ongoing to deliver food parcels to health workers and patients trapped in hospitals in North Gaza through health missions this week.
- The sector continues to call for large-scale aid cargo movement through all crossings, with safe and sustained humanitarian access to distribute these supplies within Gaza.
- More details in the [Food Security Sector Emergency Response dashboard](#).



### Logistics Cluster

- The Logistics Cluster resumed operations at West Erez entry after its reopening on 15 October, transporting 78 mt of food and WASH items.
- Since November 2023, the Logistics Cluster has facilitated 75 humanitarian inter-agency convoys through the Jordan corridor, dispatching 985 trucks carrying 10,208 mt of aid for 23 partners. All convoy data is available on the [interactive dashboard](#).
- As of 19 October, the Logistics Cluster has consolidated 18,309 m<sup>3</sup> of humanitarian cargo at the common warehouse in Amman and received 46,586 m<sup>3</sup> for common storage inside Gaza.



## ACCOUNTABILITY TO AFFECTED POPULATIONS

- WFP's self-registration link** has facilitated over 1.2 million registrations, including 40,881 in October.
- During the same period, **WFP's inter-agency hotline** recorded a total of 18,845 cases from individuals seeking information about humanitarian assistance, with 47 percent related to WFP assistance.