



WFP South Sudan

Situation Report #292

30 July 2021

Highlights

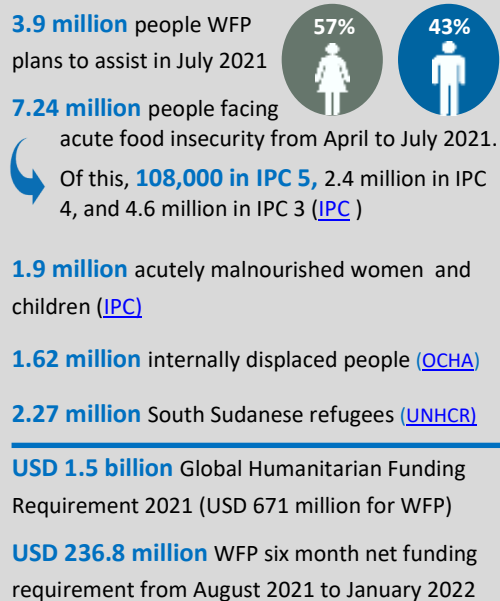
- WFP provided assistance to 7,795 people who have been displaced in Tambura as a result of violence in the area.
- Over 13,000 people that were displaced as a result of the flooding in Jonglei were able to return to Manydeng Boma in Baidit as a result of WFP’s emergency dyke and road rehabilitation project which connected Bor to Baidit town. Of the 13,000, around 1,150 returnees are WFP beneficiaries who received food assistance in June.
- On 23 July, refugees in Yusif Batil refugee camp in Maban county, Upper Nile, detained eleven staff members from WFP, UNHCR, and two NGOs for several hours, while demanding food distributions start immediately.
- WFP conducted a mission to Marial Lou and Paliang, Warrap following the July 8-9 attack to find a sustainable solution to support the food insecure communities.

Situation Update

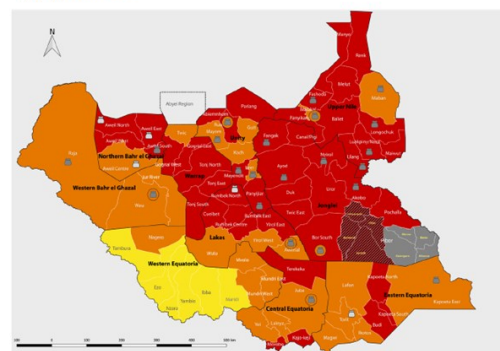
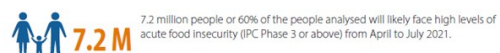
- **There is growing frustration among refugees due to the reduction of food assistance rations to 50 percent because of funding constraints.** On 23 July, refugees in Yusif Batil refugee camp in Maban county, Upper Nile, detained eleven staff members from WFP, UNHCR, and two NGOs for several hours, while demanding food distributions start immediately. While UNMISS troops attempted to support, they were blocked from entering the camp. After negotiations and engagement with the community and the county commissioner’s intervention, the humanitarian team and their vehicles were released.
- **In Western Equatoria, tensions remain high due to an increase in violence in Tambura, which according to reports has displaced 15,000 people.** WFP has already provided a one-off distribution to 7,795 IDPs and stands ready to provide further assistance should violence disrupt WFP’s operations and lead to further large-scale displacement.
- **WFP humanitarian operations continue to be hampered by roadside attacks.** On 15 July 2021, a 10 truck WFP convoy carrying 70 mt of CSB++ of food commodities from Bentiu to Kuajok got stuck in the mud at Ariel. While stuck in the mud, the convoy was ambushed by a heavily armed group. The drivers were rescued, although badly beaten, and a rescue mission to recover the trucks from the mud is currently underway. Some food has been recovered and the exact amount of food looted will be confirmed once the trucks are rescued from the mud. At least 13 people have been arrested to date in relation to the incident.
- **On July 22- 24, WFP conducted a conflict, security, and access assessment mission to Marial Lou and Paliang in Warrap** to assess the losses from the July 8-9 attack on Marial Lou and find a sustainable solution for continued support to the vulnerable communities currently facing IPC Phase 5 levels of food insecurity. The mission was successful in paving a way forward and WFP is now planning an immediate response to IDPs from Marial Lou.
- **The UK Special Envoy for Famine Prevention and Humanitarian Affairs, Nick Dyer visited South Sudan** to assess the international and government response to the humanitarian emergency in South Sudan, which included visits to WFP operations in Kuajok and Tonj North in Warrap State.
- **WFP appreciates the most recent contributions from the United States (BHA) and France.** BHA confirmed US\$ 45 million to support crisis-affected populations with food and nutrition assistance, including support to refugees, and provide livelihood support to build resilience while France confirmed US\$ 596,659 to support the lean season response in IPC 5 locations.

Photo: WFP contracted donkeys to transport nutrition commodities (while displaying nutrition messages) to reach the remote Ngauro village in Budi County (WFP/ Marwa Awad)

In The Numbers



Projection: Acute Food Insecurity | April - July 2021



WFP Response



Food and Nutrition Assistance

- In July, WFP is targeting **3.9 million** individuals in 79 counties, **2.7 million** of which under WFP's emergency response, **819,606** individuals with nutrition commodities, and **1.1 million** with assistance through WFP's safety nets and resilience programmes.
- In the six IPC 5 counties, June distributions have been completed reaching **362,083** and 97% achievement. July distributions are ongoing in all six counties, currently having reached **163,892** people (46% achievement), while August distributions have started in two counties as part of double July/August distributions.
- In IPC 4 counties, June distributions have been completed in 3 of the 4 counties currently standing at 71% completion. Deliveries for June and July have been delayed in Duk due to low airlift capacity and poor weather conditions and July distributions are proceeding slowly in Twic East and Bor South and Ayo due to delivery challenges.
- Refugee Response distributions for July have been completed in Makpandu, Gendrassa and Doro camps, and are ongoing in Kaya and Batil (Maban).
- WFP has provided assistance to 7,795 people displaced in Tambura due to the ongoing violence. More displacement in Tambura is reported as a result of continued conflict in the area and WFP is assessing numbers of reported IDPs in order to plan for additional assistance accordingly.
- WFP continues to track flooding and has reported the arrival of about 300 individuals in Malakal town from New Fangak due to flooding caused by ongoing rains.



Safety Nets and Resilience

- WFP is rolling out the Urban Safety Net project in Aweil and Rumbek, supporting 2,500 households in Aweil and 1,400 households in Rumbek. Home gardening activities and drainage cleaning have started in Aweil while vocational training institutions and training courses were identified and approximately 550 participants will start to engage in vocational trainings in Juba, Wau, Aweil and Rumbek in August.
- Through the School Feeding programme, WFP continues to support the National and State Ministry of Education (MOGEI) with the country wide 'Back to Learning' Campaign. Last week, the exercises took place in seven counties (Maridi, Mundri West, Kapoeta, Twic, Gogrial West, Tonj North), and included parents, learners, government officials and other education stakeholders.
- WFP has partnered with UNICEF for the implementation of a four-year (2020-2023) resilience project in urban and peri-urban settings of Juba, Torit, Yambio and Aweil which provides a full package of services in the sectors of education, child protection, WASH, health, nutrition, food security and livelihoods to build the absorptive, adaptive and transformative capacities of vulnerable communities.
- In the remote location of Ngauro village, Budi County, WFP and partners are reaching nearly 30,000 children under the age of five years and more than 8,000 pregnant women and nursing mothers with vital nutrition assistance. To access this remote location with existing

resources, WFP contracted 17 donkeys to deliver eleven metric tons of specialized nutritious foods. Nutrition messages are attached to the donkeys in an effort to raise awareness in the communities as these donkeys pass through.



Supply Chain

- In total, WFP plans to transport **370,000 mt** of food in 2021. To date, **238,489 mt** of food has been sourced in or brought into South Sudan, representing 64 percent of the yearly requirements.
- Through the emergency road and dyke repairs project in Jonglei, **70 breached dyke points** have been manually repaired and **56 points sealed with soil** in Bor South, which has allowed for the dispatch of **43,840 mt** of food in Jonglei State, representing over 58% achievement.



Logistics Cluster

- The Logistics Cluster transported a total of **210 mt** of humanitarian cargo to 31 locations on behalf of 20 organizations.
- The tenth boat convoy departed from Malakal to locations along the Sobat River, transporting 44 mt of relief items.
- The Logistics Cluster facilitated the departure of two road convoys. One convoy left Juba for destinations along the Western Corridor with approximately 600 mt of humanitarian cargo, and the other departed Juba to Mundri and Jambio with about 240 mt of Non-Food Items.
- The latest Physical Access Constraints Map, updated on a weekly basis, is available [here](#).



UN Humanitarian Air Service (UNHAS)

- UNHAS transported **1,785** passengers and **72 mt** of light humanitarian cargo to 53 destinations across South Sudan.
- UNHAS performed **4** medical evacuations on behalf of one organization from Mundir and Lankein to Juba and two ICWG mission transporting **23** passengers to three destinations.



Photo: Preparing sorghum in Akobo (WFP/ Theresa Piorr)

In Focus: Over 13,000 displaced people returned to Jonglei thanks to WFP's emergency road and dyke rehabilitation project

2019 and 2020 saw the worst flooding in recent history in South Sudan, affecting more than 525,000 people and displacing communities, disrupting trade routes, and damaging houses, crops, and infrastructure. In 2021, WFP embarked on an ambitious plan to conduct emergency road and dyke repairs in Greater Bor to allow for timely and cost-efficient pre-positioning of food, facilitate the return of communities displaced by floods, and protect vulnerable counties from further flood damage in the 2021 rainy season.

Through this project, WFP repaired 70 beach points manually and 56 breach points with machinery (and sealed with soil) in Bor South to Jalle. Manual repairs have covered 18.4 km while machinery repairs over 14 km of road previously inaccessible. Additionally, 4.1 km of the 11km Baidit Adwar road embankment has been raised to prevent deterioration during rainy season while other road repairs in Bor South include 27.5 km from Bor to Baidit.

The successful accomplishments of this project have allowed WFP to dispatch 43,840 mt of food commodities in Jonglei State, over 58% of the requirements and more food than has even been pre-positioned in Jonglei by road than ever before. Furthermore, over 13,000 people that were displaced because of the flooding in Jonglei over the last two years were able to return to Manydeng Boma in Baidit as a result of the dyke and road rehabilitation works done by WFP to connect Bor to Baidit town. Out of the 13,000, around 1,150 returnees are WFP beneficiaries who received food assistance in June.

Thanks to the slow start to the rainy season, WFP was able to continue urgently working on road repairs until mid-July, much past the expected halt of the project. WFP plans to resume road and dyke repairs work in October 2021 once water levels have receded with the hope to complete rehabilitation projects ahead of WFP's 2022 pre-positioning exercise which ensures food commodities are strategically placed throughout the country before the rainy season. Road repairs reduce reliance on costly air operations and allow WFP to deliver food to remote locations that otherwise become inaccessible during the rainy season.



Photo: Completed road section between Baidit and Adwar (WFP)



Photo: Progress of sealing breach points in Bor South (WFP)

WFP Interim Country Strategic Plan						
	Total Requirements (millions In USD)	Allocated Contributions (millions in USD) *	6 Months Net Funding Requirements August 2021 to January 2022 (millions in USD)	People Assisted (May 2021)	Female	Male
ICSP TOTAL (2018-2021)	3,885.3	2,372.4	236.8	2,950,025	1,681,514	1,268,511
Activity 1: Provide nutrition-sensitive food assistance to crisis-affected populations	2,181.1	1,112.3	163.4	2,094,123	1,193,650	900,473
Activity 2: Provide food and nutrition assistance to refugees	477.5	206.2	34.9	245,315	139,830	105,485
Activity 3: Provide nutrition assistance to populations at risk of malnutrition	548.7	240.3	22.3	210,027	119,715	90,312
Activity 4: Provide livelihood support and build resilience of rural households	275.4	115.3	0.0	400,560	228,319	172,241
Activity 5: Operate air services for the humanitarian community	208.3	173.5	4.8	N/A	N/A	N/A
Activity 6: Coordinate the Logistics Cluster in support of the humanitarian community	97.6	89.7	1.2	N/A	N/A	N/A
Activity 7: Supply Chain provision	21.4	11.3	2.4	N/A	N/A	N/A
Activity 8: Inter-Agency IT Communication Service	9.6	7.5	0.0	N/A	N/A	N/A
Activity 9: SCOPE Service to humanitarian partners	53.9	15.7	7.8	N/A	N/A	N/A
Activity 10: Provision of IT services to the humanitarian community	1.3	0	0.0	N/A	N/A	N/A
Activity 11: Provision of infrastructure development services for humanitarian access and community	10.5	10.7	0.0	N/A	N/A	N/A
Non Activity Specific funding		389.9				

Thank you to our 2020 and 2021 Donors

