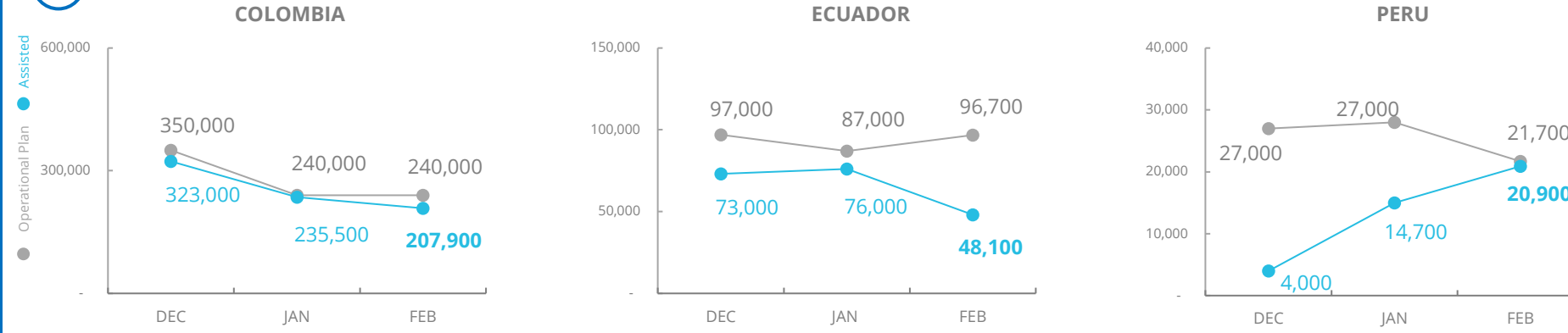


Sub-regional migrant crisis - Colombia, Ecuador, Peru

PEOPLE ASSISTED BY WFP

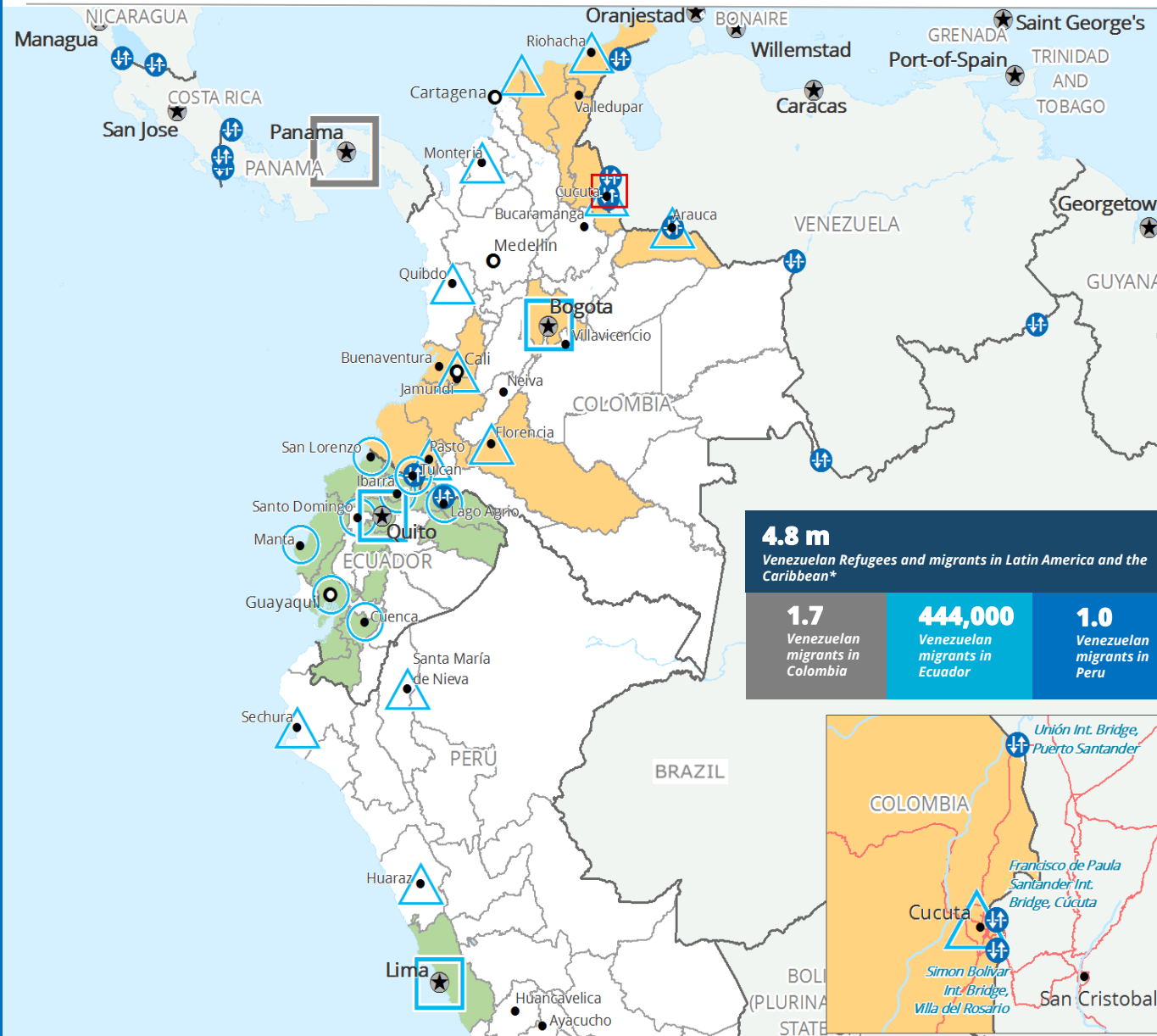


FUNDING

May 2021 - October 2021

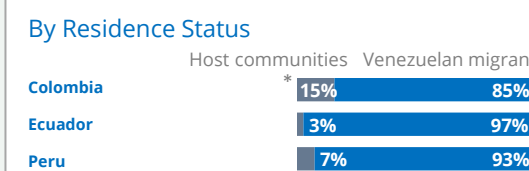
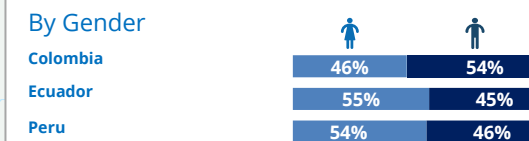
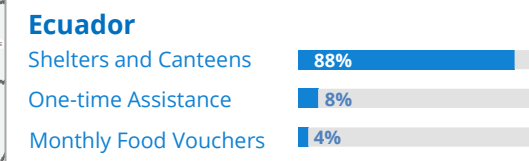
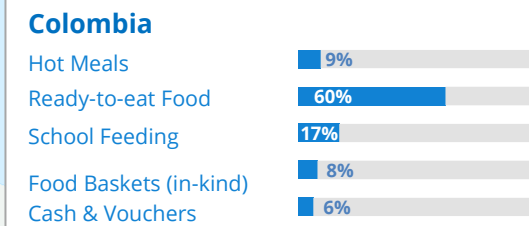
Net Funding Requirements (US\$)

Colombia	72m
Ecuador	12m
Peru	12m
Total	96m



OPERATIONAL PROFILE

% of People vs Modality

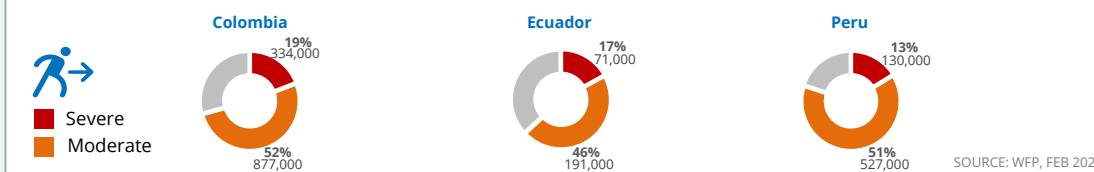


*The figure includes Colombian returnees SOURCE: WFP, 30 DEC 2020

COVID-19 OPERATIONAL IMPACT

Status	WFP Response
✓	Colombia School feeding: Adaptation to take-home rations; Significant scale-up of food baskets (in-kind); Expansion of Cash and Vouchers as a safer deliver modality.
✗	Hot meals: Most community kitchens are temporarily closed, smaller ones and those operating in shelters continue functioning.
✓	Relief support to Venezuelan returnees through food kits; Emergency relief support in the Amazon region, including for indigenous populations; Expansion to urban areas, including cash assistance in Bogotá.
✓	Ecuador Monthly Food Vouchers: Beneficiaries are still selected and assisted by phone. Strengthened assistance is given to the most vulnerable pregnant women and children.
!	Shelters & Canteens: 25 out of 28 shelters and canteens assisted vulnerable population.
✓	Peru Prior to the COVID-19 pandemic, WFP did not have an active crisis response operation in the country. To address the convergence of the pandemic and the regional migration crisis, WFP set-up an emergency cash transfer response.

Percentage of Migrants Severely and Moderately Food Insecure



WFP LEVEL 2 EMERGENCY SINCE 30 MARCH 2018. L2 EXTENDED AND EXPANDED TO ECUADOR AND PERU ON 30 DECEMBER 2020.