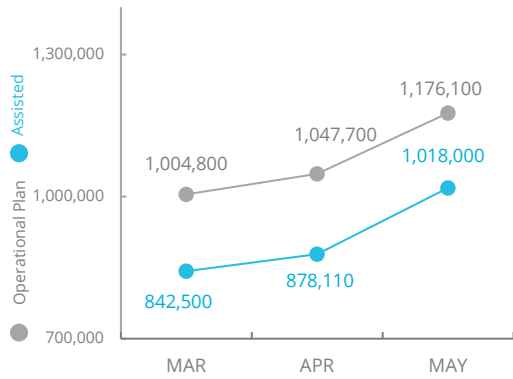


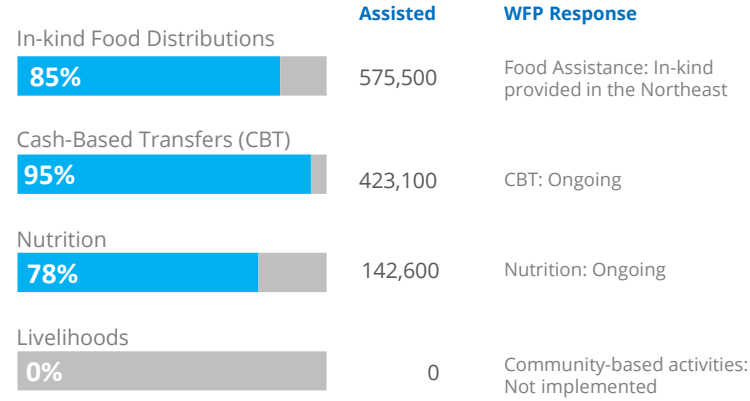
Nigeria

PEOPLE ASSISTED



OPERATIONAL PROFILE

People reached (May)



SOURCE: WFP, 14 JUN 2021

FUNDING

Nigeria Country Strategic Plan

July – December 2021
Net funding requirements

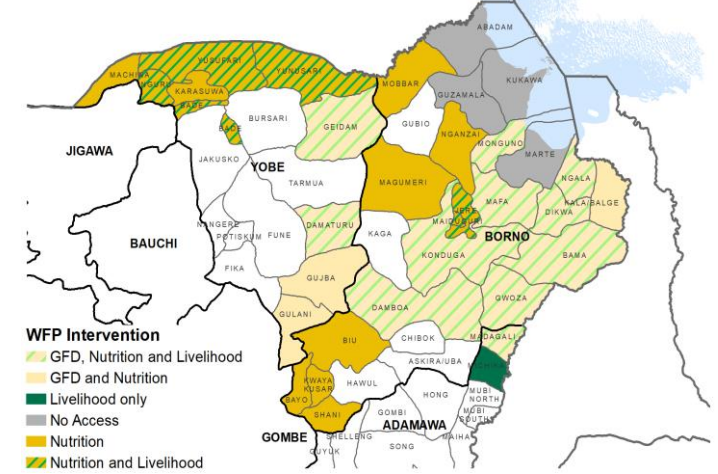
US\$203.1m

LEVEL 3 RESPONSE
Requirements: USD 223.3m



SOURCE: WFP, 22 JUN 2021

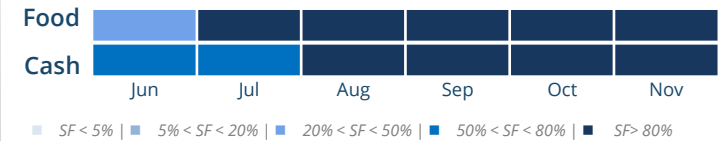
WFP OPERATIONAL PRESENCE



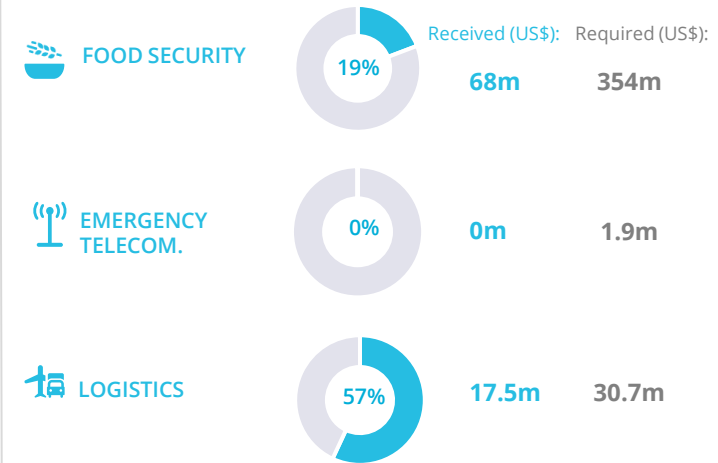
AVERAGE MONTHLY FUNDING REQUIREMENTS (US\$)



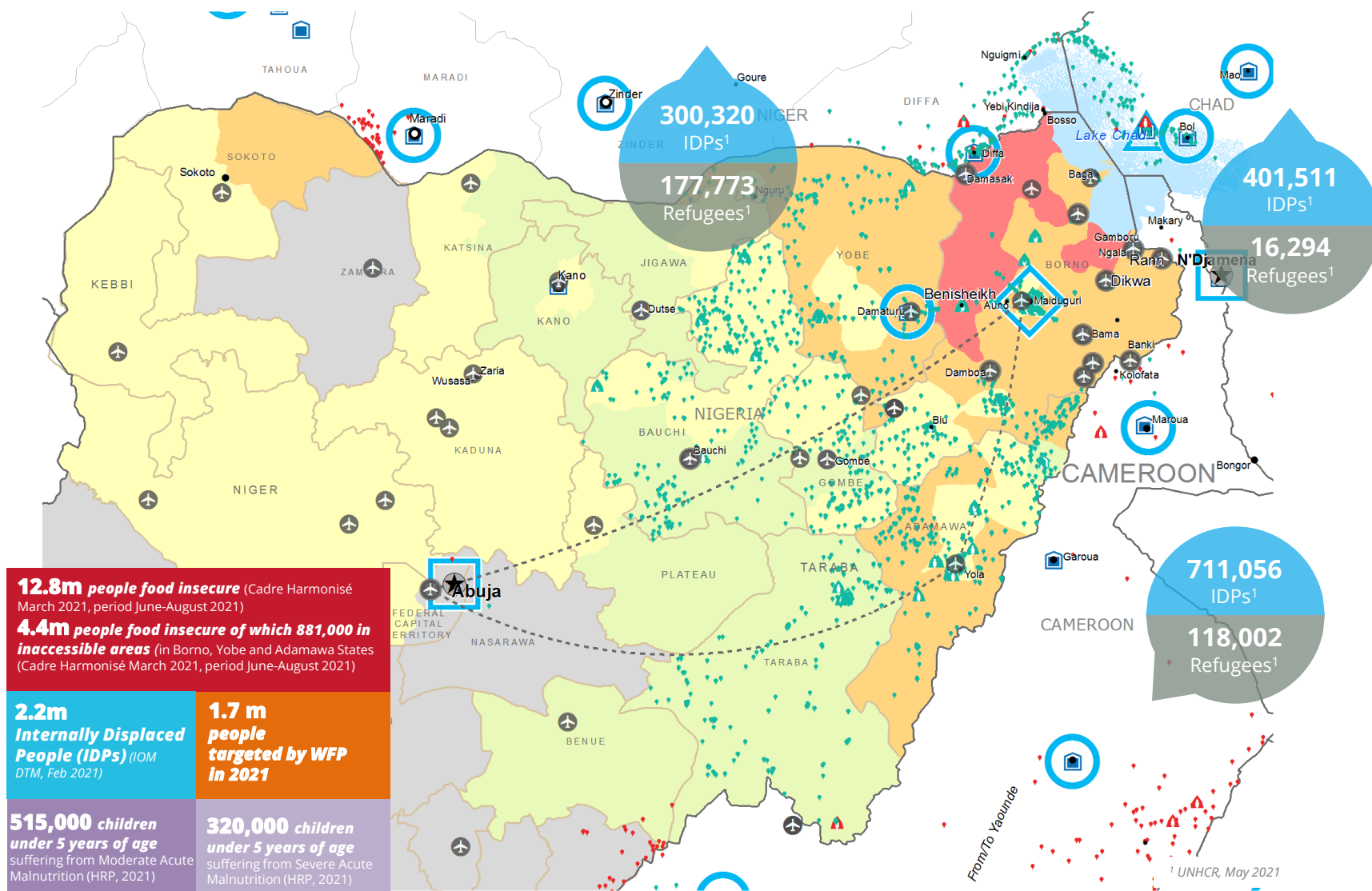
EXPECTED SHORTFALLS



WFP-LED AND CO-LED SECTORS



UN HUMANITARIAN AIR SERVICE (UNHAS)



12.8m people food insecure (Cadre Harmonisé March 2021, period June-August 2021)

4.4m people food insecure of which 881,000 in inaccessible areas (in Borno, Yobe and Adamawa States (Cadre Harmonisé March 2021, period June-August 2021)

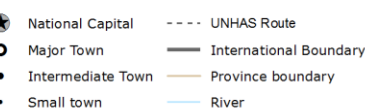
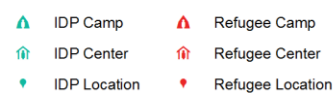
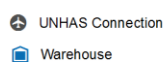
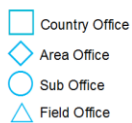
2.2m Internally Displaced People (IDPs) (IOM DTM, Feb 2021)

1.7m people targeted by WFP in 2021

515,000 children under 5 years of age suffering from Moderate Acute Malnutrition (HRP, 2021)

320,000 children under 5 years of age suffering from Severe Acute Malnutrition (HRP, 2021)

CH Food Security Classification



Sources: WFP, UNGIWG, GAUL, GLCSC, OCHA, UNHCR.

The designations employed and the presentation of material in the map(s) do not imply the expression of any opinion on the part of WFP the delimitation of its frontiers or boundaries. © World Food Programme 2021.

WFP LEVEL 3 EMERGENCY
SINCE 11 AUGUST 2016

SITUATION REPORT and COUNTRY BRIEF