

# WFP Democratic Republic of Congo

## Situation Report #31 – 6 December 2021

### Headline

#### Integrated Food Security Phase Classification (IPC 20)

**report published:** On 10 November the [IPC 20 report](#) officially published that **27 million** people are in IPC 3 and 4 in DRC. **26%** of the population analysed (96% of DRC's population) are food insecure. DRC continues to have the highest estimated number of food-insecure people worldwide.

### Situation Update

- **Country Director Mission to Goma:** The WFP Country Director visited Goma and Minova with the German Development Bank, KfW, in the week of 22 November, to observe together the progress of the resilience activities supported by the German funds.
- **Country Director Mission to Walikale, North Kivu:** The Country Director met with local authorities in Walikale, North Kivu, to discuss the challenges in the implementation of the resilience activities.
- **WFP partnerships with financial institutions:** WFP DRC Country Director, Peter Musoko, with the support of the Food Security Cluster (FSC) engaged in preliminary discussions with Equity Bank and Ecobank in the week of 8 November about expanding access to financing. WFP is also considering engagement with Trust Merchant Bank (TMB) to create a coalition of local banks to fight against hunger and provide financial services to smallholder farmers.
- **WFP Executive Board:** During the week of 15 November, the DRC Country Director and Deputy Country Director met with donor delegations to update on WFP operations in 2022.
- **External audit:** A team from the French *Cour des Comptes* audited WFP DRC and operations from 15 November. The team focused on compliance and performance analyses. It met several WFP donors in DRC on 16 November and the WFP office in Kalemie.

	<b>27 m</b> highly food-insecure people
	<b>26</b> provinces affected
	<b>5.6 m</b> people displaced
	<b>5 m</b> people reached in 2021 (Jan – Sep)
<b>Total 2021 funding requirements</b>	<b>US\$ 662.5 m</b>
<b>6-month Net Funding Requirements (Nov 2021 – April 2022)</b>	
Food Assistance	<b>US\$ 97.8 m</b>
Nutrition	<b>US\$ 9.8 m</b>
Other activities	<b>US\$ 10.1 m</b>
<b>Total</b>	<b>US\$ 117.7 m</b>

*Photo legend: Kisimba uses the cash transfers she receives from WFP to support her farm. Credit: Lerneryd / WFP.*

### WFP Response

- Under the Country Strategic Plan 2021-2024, WFP continues its large-scale assistance, targeting **8.7 million** people with food and nutrition assistance throughout 2021.



#### Food and Nutrition Assistance

- **Overview:** WFP DRC's distributions in November reached **1,029,000** beneficiaries with either in-kind, cash-based transfers (CBT) or nutrition assistance to prevent and treat malnutrition. Insecurity in Ituri, and North and South Kivu provinces imposed challenges to in-kind food deliveries, with assistance postponed in some territories.
  - In-kind assistance reached **443,000** individuals in November.
  - In November, WFP reached **235,000** people with CBT.
  - Nutrition assistance advanced well in November. WFP

provided **360,000** children and pregnant and lactating women and girls with nutritious products.

- **Tanganyika:** This month, WFP's Kalemie office distributions advanced well, reaching **248,000** beneficiaries across all transfer modalities. This included **84,000** in-kind and **90,000** CBT distributions. **74,000** beneficiaries were reached with nutrition activities.
- **Kasai central and Kasai oriental:** The WFP office in Kananga reached **186,000** beneficiaries in November with either in-kind, CBT, or Nutrition assistance. In-kind double distributions planned for October and November reached **102,000**. Cash assistance was delivered to **29,000** beneficiaries. WFP reached **55,000** beneficiaries with malnutrition treatment and prevention activities.
- **Kasai:** In November, WFP's Tshikapa office assisted **192,000** people overall. This includes **55,000** conflict-affected people with in-kind contributions in the Banga Lubaka health zone. CBT distributions advanced well covering October and November distributions, assisting **62,000** people. Malnutrition treatment activities picked up in November, reaching **73,000** people.
- **Ituri:** Despite severe access disruptions due to insecurity in the region, WFP distributed in-kind food commodities to **55,000** vulnerable people and cash to **37,000** people in November. Some **5,000** children and pregnant and lactating women and girls received malnutrition treatment assistance, while malnutrition prevention products reached **15,000** beneficiaries.
- **North Kivu:** The WFP Goma Office reached an estimated **160,000** people through in-kind food distributions, CBT, or nutrition activities in November. Despite security constraints in parts of Beni territory, in-kind distributions assisted **118,000** beneficiaries in Beni, Masisi and Rutshuru territories. Cash transfers reached **15,000** people. Some **22,000** children and pregnant and lactating women and girls have received nutritious supplies to treat malnutrition. Some **4,000** were reached with malnutrition prevention products.
- **South Kivu:** In November, the Bukavu office reached **18,000** people with in-kind food distributions. Insecurity in Baraka has postponed WFP distributions to returnees and internally displaced people from Bibokoboko. WFP are discussing solutions with local authorities. Malnutrition treatment products were supplied to **38,000** children and pregnant and lactating women. Malnutrition prevention products reached **72,000** beneficiaries.
- **Refugee assistance:** The Gbadolite office have prepared double cash distributions for November and December to **56,000** beneficiaries in four refugee camps in the Ubangis. An

additional two cycles of cash distributions for Central African refugees and host populations in Zongo, Yakoma and Modale for **2,000** beneficiaries are planned.

### Supply Chain

- **Access:** The national road which brings supplies to Bunia from Tanzania is open again, facilitating international deliveries from Dar Es Salam port. The volatile security situation still hampers the supply of some locally procured commodities from Beni and Goma. Oil has been airlifted from Kinshasa to Bunia.
- **Downstream supply in western DRC:** A joint donor mission with BHA took place in Matadi visiting local authorities and commercial partners to reinforce the importance of this critical entry point for WFP operations in the Kasais. The delegation met with the *Office Congolais de Contrôle*, to discuss the release and transfer of Maize Meal containers held for several months. Some will be sent to the Kasais for distribution in December, January and February.
- **Food Quality Tests:** The WFP food technologist is advising local food suppliers on good manufacturing practices for future supplies to WFP, notably for food going to the Kasais.

### Clusters and Common Services

#### Logistics Cluster (LogCluster)

- **COVID-19:** The LogCluster continues to provide free storage of COVID-19 items to partners, notably the WHO and the Ministry of Health, in support of the pandemic response in DRC. Belgium is continuing their support to facilitate transport and to provide cold chain materials for the National Programme of Vaccination.
- **Information Management/Geographic Information Systems:** Maps and documents are shared on [logcluster.org](https://logcluster.org). Physical access alerts in eastern DRC are continuing via [dcr-logs@logcluster.org](mailto:dcr-logs@logcluster.org). LogCluster are monitoring access improvement projects in North Kivu, Maniema and South Kivu.
- **Gaps and Needs Analysis and LogCluster strategy 2022/2023:** The final report is being edited.

#### Food Security Cluster (FSC)

- **Integrated Food Security Phase Classification (IPC 20) Report published:** On 10 November the [IPC 20 Report](#) officially published that **27 million** people are in IPC 3 and 4 in DRC. **26%** of the population analysed (**96%** of DRC's population) are food insecure. DRC continues to have the

highest estimated number of food-insecure people worldwide. Conflict and endemic poverty remain top drivers for hunger. Key hunger hotspots, in north-eastern North Kivu, Ituri and the central Kasai provinces, are weathering or emerging from longstanding unrest. Other factors include climate shocks, increase of crop-destroying pests, Ebola, and the economic impact of COVID-19, which have contributed to shrinking food production, deepening hunger and poverty.

- **Restructuring humanitarian coordination:** WFP and FAO are hiring a new FSC coordinator in the conflict stricken Ituri province. This follows the agreement reached at a peer-to-peer mission last month that humanitarian coordination requires restructuring.
- **FSC Annual Retreat:** This month, FSC reviewed its strategy and drafted a 2022 work plan. Two strategic objectives were identified: 1. To provide food assistance designed to restore dignity and empower people. 2. To ensure food security that promotes sustainable food systems and food sovereignty for individual and community economic development.



### **Bilateral Services Provision (BSP)**

- **Country Tracking Application (CTA):** The pilot of the application was concluded with the project manager from HQ Rome. A three-day pilot took place in Goma for the offices in Eastern DRC. The CTA will go live in the beginning of 2022. It will improve system performance management and give visibility to warehouse stock management and transport operations.



### **UN Humanitarian Air Service**

- In November, UNHAS DRC and ECHO Flight project, managed by WFP/UNHAS, transported **6,119** passengers (the highest number of the year) and **91 MT** of essential light cargo.
- **Voluntary Repatriation of Central African refugees:** From 15 to 20 November, UNHCR and UNHAS repatriated over **500** refugees to the Central African Republic from the Inke camp in North Ubangi.
- **Tshikapa Airport runway:** The WFP-UNHAS funded project rehabilitating the Tshikapa runway was completed on 25 November and regular flights resumed.
- **High Level Delegations:** In November, UNHAS facilitated high level delegations from the following organisations: the Danish Refugee Council, UNHCR, UN OCHA, WFP, UNICEF, FAO, German Corporation for International Cooperation (GIZ), KfW, the German Embassy, the Belgian Embassy and MONUSCO.
- **Evacuations:** UNHAS conducted **14** medical evacuations out

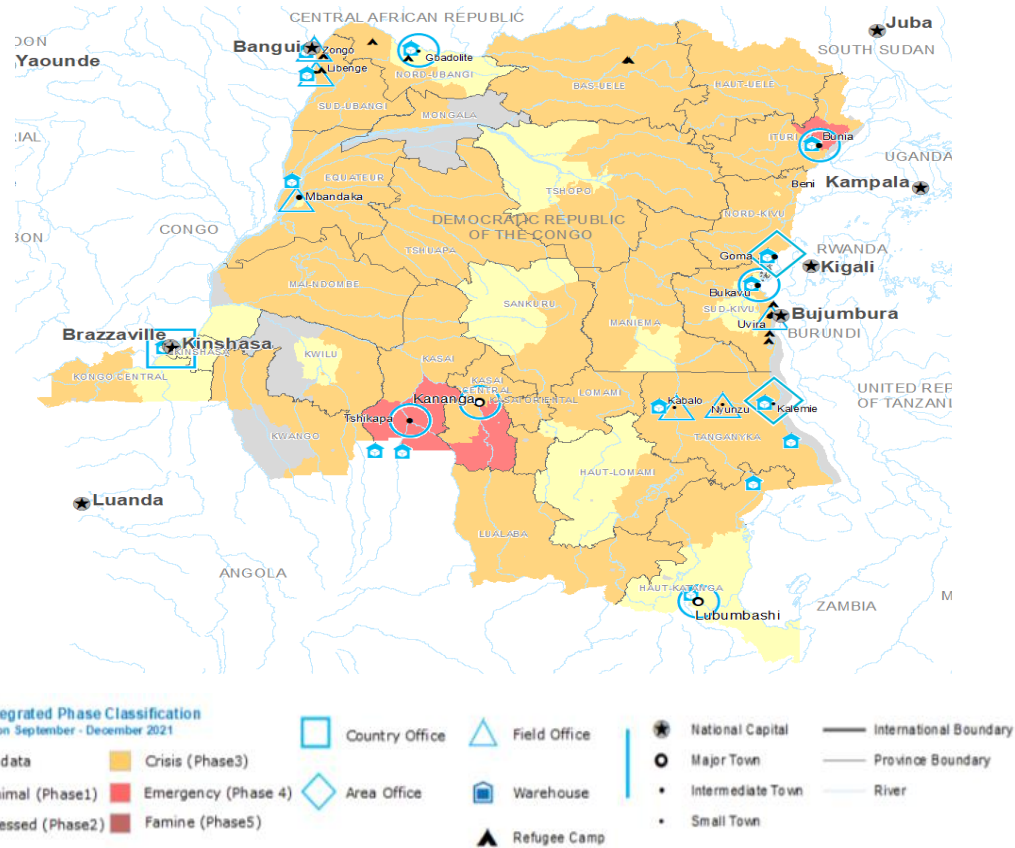
of Goma, Nagero, Walikale, Roe and Kalemie and **46** security evacuations out of Roe, in Ituri province.

- **UNHAS Steering Committee:** The Committee met to discuss the funding gap for Q1 2022.



### **Communications**

- **IPC Report:** WFP produced multi-media press releases in English and French.
- **16 Days of Activism:** The campaign commenced on 25 November [with a series of Tweets](#) in which staff celebrated the campaign with placards and t-shirts.
- **Solar-powered Kananga guesthouse story:** Featured on [WFP.org](#).
- **Social media:** Tweets focused on the [IPC numbers](#), [environmental issues](#), [edible insects](#) palm larvae and caterpillars, the launch of the [School Feeding Coalition](#) and the [UNHAS repatriation](#) of several hundred CAR refugees from Gbadolite to Bangui.
- **Interviews:** CGTN aired a [report on edible insects](#), featuring an interview with Natasha Nadazdin, the WFP Deputy Country Director in DRC, at **30:21**. The Deputy Country Director also spoke on UN Radio. Mathilde Vaultier, Head of the Kinshasa sub-office, spoke about WFP's N'sele project on Radio Okapi.
- **Publications:** [The Independent](#) ran the story of Kisimbu who rebuilt her life after receiving a small sum of cash.



Special thanks to our donors in 2020 - 2021 (listed alphabetically)



## Contacts

- Peter MUSOKO, Country Director: [peter.musoko@wfp.org](mailto:peter.musoko@wfp.org)
- Georgia HERDE, Junior Reports Officer: [georgia.herde@wfp.org](mailto:georgia.herde@wfp.org)
- For further information, visit the Democratic Republic of Congo page [here](#).