



World Food Programme

# WFP Mozambique Situation Report #3

22 March 2022

## In Numbers

488,570 people affected

5 provinces affected

23,408 people displaced

52 temporary transit centers

105,051 houses damaged or destroyed

469 schools damaged or destroyed

143,904 students impacted

91,177 ha of crop fields lost

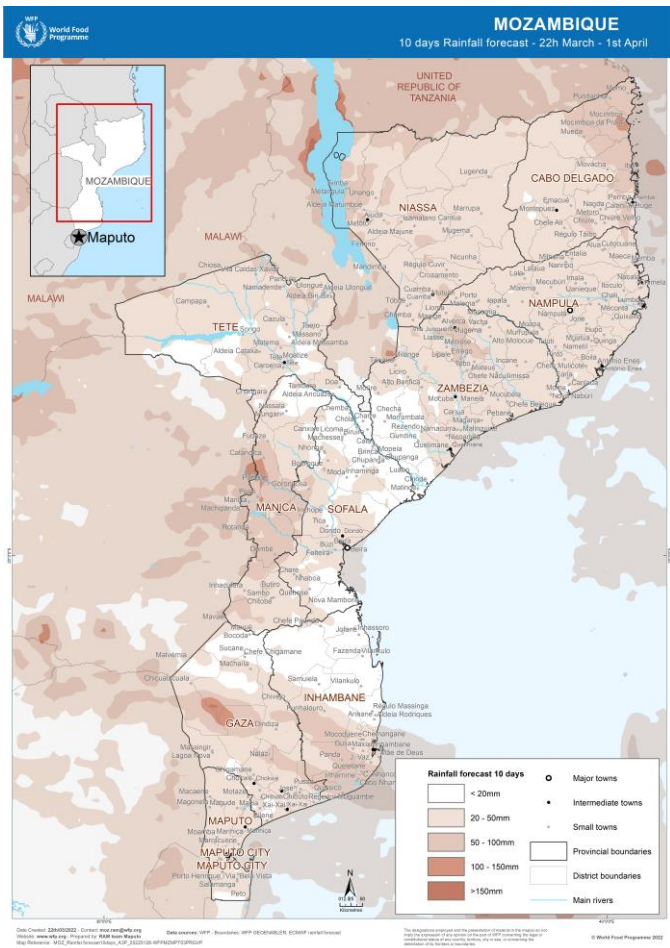
69 health centers damaged or destroyed

## Highlights

- In Zambezia province, WFP started the distribution of 7-day rations to people in transit centers in close coordination with the National Institute of Disaster Risk Reduction (INGD).
- WFP plans to reach 8,760 people in Zambezia total with lifesaving food assistance. It already delivered to 2,725 people in Nicoadala and 2,645 in Quelimane District.
- Next distributions will be in Mocuba and Mangaja da Costa.
- In Zambezia, WFP is also mobilizing resources to assist with 30-day return rations to people leaving transit centres and returning to their places of origin. The return rations will cover 100% of the daily calorie needs, with 50 kg of rice, 20 kg of beans, 5L of oil and 175 g of salt.
- In Nampula, WFP is complementing INGD food stocks to cover displaced people in temporary transit centres.
- WFP Supply Chain team is support INGD logistics assessments in Nampula with staff and resources. WFP is supporting maritime access to administrative post of Lunga with the provision of fuel for boats.

## Situation Update

- Cyclone Gombe made landfall 50 km south of Ilha de Mozambique on 11 March, hitting areas affected by Tropical Storm Ana.
- Extreme rainfall in the past 7 days caused additional flooding in Central Sofala (in urban areas of Beira and southern Buzi river basin) and in areas already affected by Cyclone Gombe in Zambezia (Quelimane, Nicoadala, Namacurra Mangaja da Costa).
- Further damage is expected on roads and crops in these areas.
- Rainfall is forecast to reduce in the following 7 days; river water levels are expected to recede in the impacted areas.
- The national main road EN1 was damaged, cutting off access to the north of the country, which created challenges to transport humanitarian assistance from northern to central provinces and vice-versa.
- In total, more than 1,008 km of roads are damaged or destroyed in the affected areas.
- The Indian Ocean continues to gather favourable conditions for the formation of new tropical storms. Hence, the cyclone season is likely to be over only in late April.
- Cyclone Gombe caused the destruction of more 91,177 ha of crops. The Government alerts for the probability of a food shortage of 2 to 5 months.



## WFP's response

- WFP is supporting INGD with humanitarian staff and resources to provide food to people most affected and logistics support to search & rescue and relief operations if needed.
- WFP has deployed a multisectoral team to the most affected areas to support the different needs of people and INGD's response.
- WFP deployed its protection team to Nampula and Zambezia to ensure that protection and protection against sexual exploitation abuse are integrated in the response to people in transit centres and people returning to their areas of origin.
- WFP Supply Chain team is support INGD logistics assessments in Nampula with staff and resources. WFP is supporting maritime access to administrative post of Lunga with the provision of fuel for boats.
- In Nampula, WFP will supplement INGD's food assistance in transit centers in the coming days.
- In Zambezia, WFP is proving 7-day food rations to 8,760 people in transit centers.
- WFP created an interactive map ([link](#)) to monitor the cyclone season in Mozambique.

## Situation per province

### Nampula

- Most affected districts: Angoche, Liupo, Memba, Rapale, Mecuburi, Muecati, Nacarrôa, Monapo, Mogincual, Mossuril, Nacala, Ilha de Moçambique and Nampula city.
- WFP is in coordination with INDG to provide food assistance to people in need in transit centers. WFP's current funding is limited to assist displaced people only.
- WFP is also providing support to maritime access to Lunga through the provision of fuel and will support reaching other isolated areas by boat.
- WFP will start a registration process for community registration. communities.

### Zambezia

- Most affected districts are in the north of the province: Pebane, Gilé, Mulevala, Mocubela, Maganja da Costa, and Alto Mulocue.
- Numbers of impact are still increasing.
- Access remains a challenge for humanitarian assistance to reach transit centers with many districts flooded, roads are reportedly destroyed.
- Boats and tractors can be used to transport food to isolated areas.

### Cabo Delgado

- Despite the conflict crisis affecting nearly 900,000 people in Cabo Delgado, WFP has deployed staff and logistics support from Pemba to Nampula to help conduct rapid food security assessments to cyclone Gombe most

## Contacts

**Antonella D'Aprile**, Country Director, WFP Mozambique

**Francesco Stompanato**, RAM,  
[francesco.stompanato@wfp.org](mailto:francesco.stompanato@wfp.org)

**Geert Gompelman**, Emergency Coordinator,  
[geert.gompelman@wfp.org](mailto:geert.gompelman@wfp.org)

**Denise Colletta**, Communications Officer,  
[denise.colletta@wfp.org](mailto:denise.colletta@wfp.org)

For further information, visit Mozambique page on [www.wfp.org/mozambique](http://www.wfp.org/mozambique)