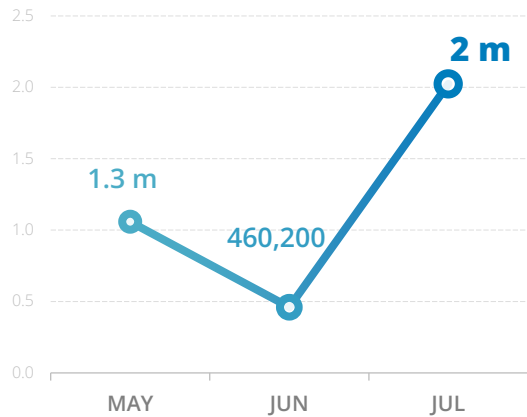


PEOPLE ASSISTED

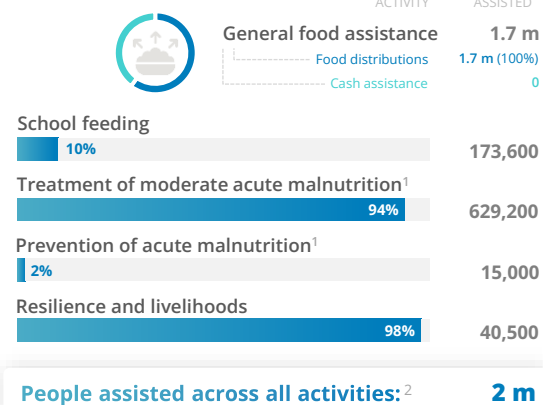
All activities



SOURCE: WFP YEMEN, JULY 2024

OPERATIONAL PROFILE

By activity (percent reached of operational plan)



People assisted across all activities:² **2 m**

¹ Based on dispatches; ² Estimated unique beneficiaries assisted. Excludes overlap between activities.

SOURCE: WFP, AS OF 31 JULY 2024

2024 TOP DONORS

By confirmed contributions

- United States of America
- European Commission
Humanitarian Aid and Civil Protection Office
- United Kingdom
- Republic of Korea
- Germany

FUNDING

Yemen interim country strategic plan (2023 - 2025)

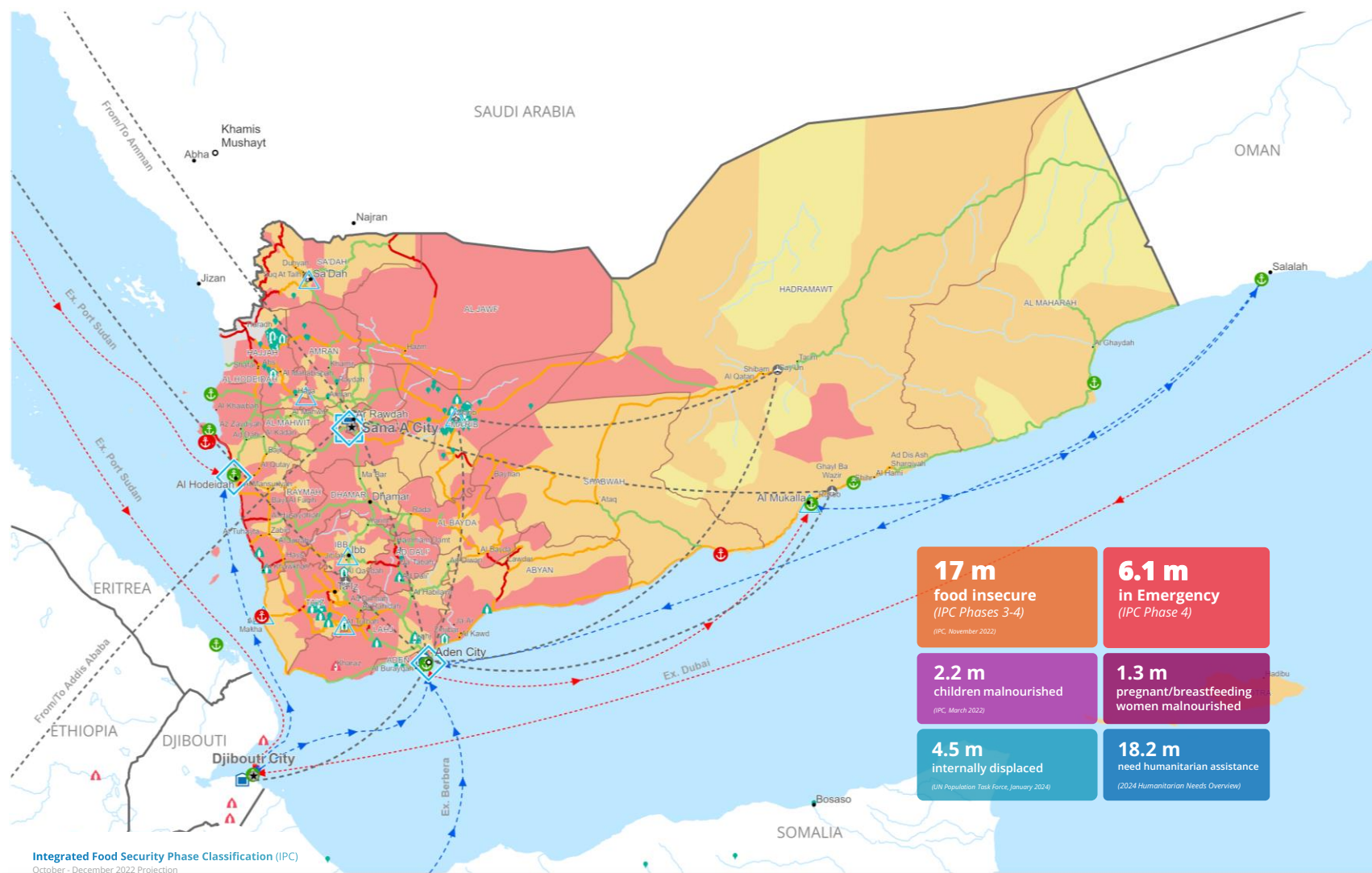
6-MONTH NET FUNDING REQUIREMENT:

US\$ 523 m

August 2024 - January 2025



SOURCE: WFP, JULY 2024



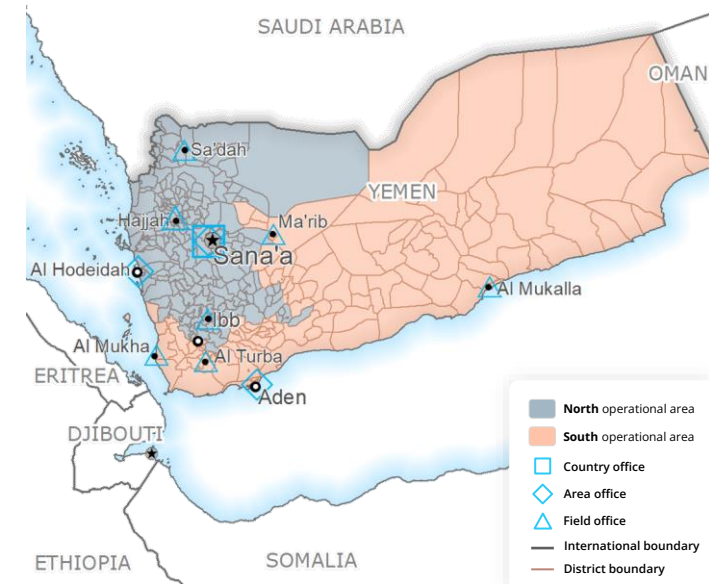
- 17 m** food insecure (IPC Phases 3-4) (IPC, November 2022)
- 6.1 m** in Emergency (IPC Phase 4)
- 2.2 m** children malnourished (IPC, March 2022)
- 1.3 m** pregnant/breastfeeding women malnourished
- 4.5 m** internally displaced (UN Population Task Force, January 2024)
- 18.2 m** need humanitarian assistance (2024 Humanitarian Needs Overview)

Integrated Food Security Phase Classification (IPC)
October - December 2022 Projection

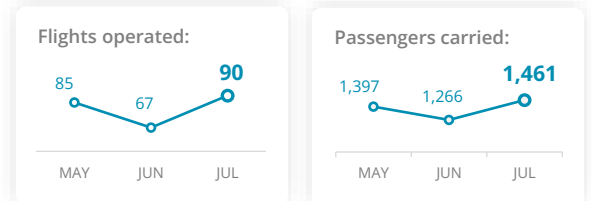
No data	Crisis (Phase 3)	Country Office	Field Office	Port Closed	UNHAS Connection	Road Open	IDP Camp	Refugee Camp	National Capital	International Boundary
Minimal (Phase 2)	Emergency (Phase 4)	Area Office	Warehouse	Port Operational	UNHAS Route	Road with Restricted Access	IDP Center	Refugee Center	Major Town	Governorate Boundary
Stressed (Phase 2)	Famine (Phase 5)			Port with Restricted Access	Supply Route Open	Road Closed	IDP Location	Refugee Location	Intermediate Town	River
					Supply Route Closed				Small Town	

Produced by the WFP Yemen Country Office in coordination with the WFP Operations Centre (OPSCEN) and the WFP Regional Bureau for the Middle East, Northern Africa, and Eastern Europe. This dashboard is based on best available information at the time of production. Information on future updates may vary as new information becomes available. The boundaries and names and the designations used on these maps do not imply official endorsement or acceptance by the United Nations.

WFP YEMEN OPERATIONAL PRESENCE



UN HUMANITARIAN AIR SERVICE (UNHAS)



SOURCE: UNHAS YEMEN, JULY 2024

WFP EMERGENCY CLASSIFICATION:

CORPORATE ATTENTION

For more information, see the WFP Yemen Situation Report #7, July 2024. See also the Yemen Emergency page on WFP.org.