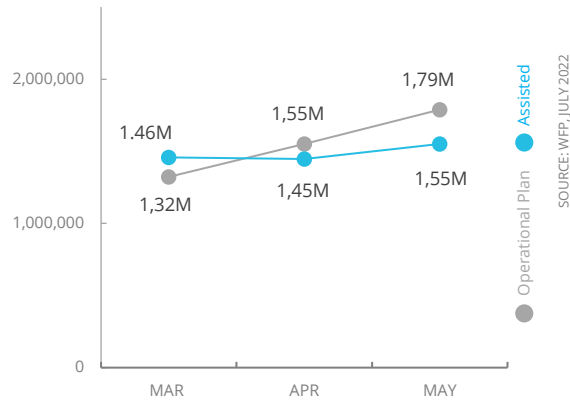


Democratic Republic of Congo

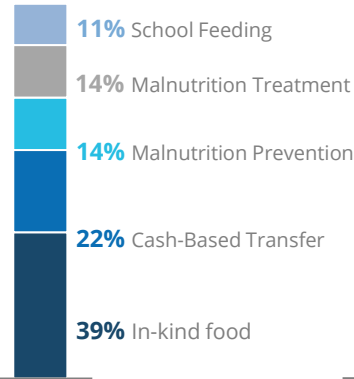
PEOPLE ASSISTED

DR Congo Country Strategic Plan (CSP)

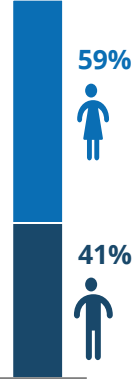


OPERATIONAL PROFILE

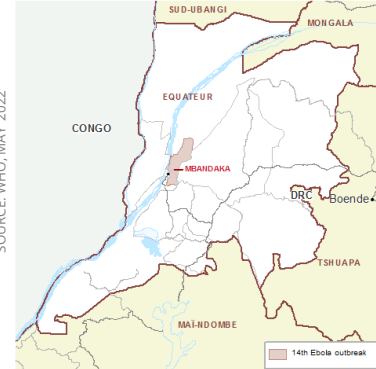
By Activity



By Sex



EBOLA OUTBREAK (EQUATEUR PROVINCE)



WFP, the Logistics Cluster and UNHAS are providing logistics & transportation services, including of vaccines, to the area.

CASES: 5 (4 confirmed, 1 probable); DEATHS: 5
FIRST SYMPTOMS RECORDED: 5 APR 2022
OUTBREAK DECLARED OVER: 4 JUL 2022
PEOPLE AFFECTED & AT RISK: 408,265

FUNDING

DR Congo Country Strategic Plan
July – December 2022

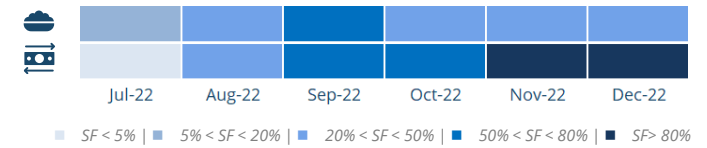
Net funding requirements
US\$111m

2022 Emergency Response Requirement **US\$645.4m**

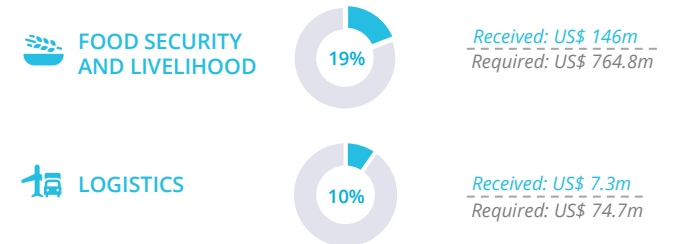
AVERAGE MONTHLY FUNDING REQUIREMENTS (US\$)

Food: 32m Cash: 14m

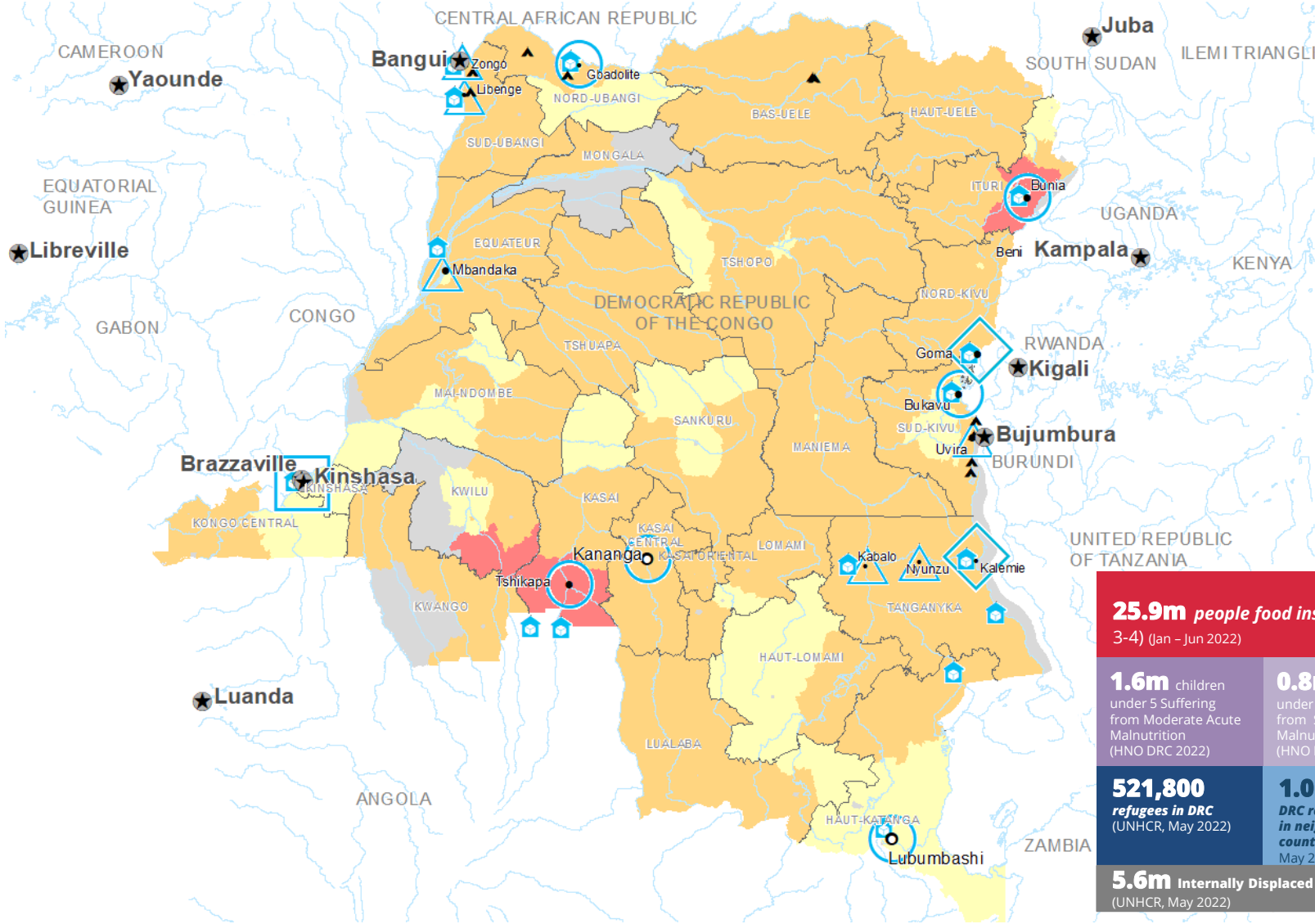
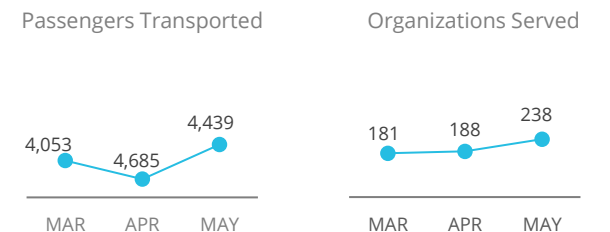
EXPECTED SHORTFALLS



WFP-LED AND SUPPORTED CLUSTERS



UN HUMANITARIAN AIR SERVICES (UNHAS)



Integrated Phase Classification Projection January - June 2022



Sources: WFP, UNGIWI, GAUL, GLCSC, OCHA, UNHCR, IPC.
The designations employed and the presentation of material in the map(s) do not imply the expression of any opinion on the part of WFP concerning the legal or constitutional status of any country, territory, city or sea, or concerning the delimitation of its frontiers or boundaries.
© World Food Programme 2022.

WFP EMERGENCY CLASSIFICATION:
CORPORATE ATTENTION
SINCE 01 FEB 2022



SITUATION REPORT and COUNTRY BRIEF

