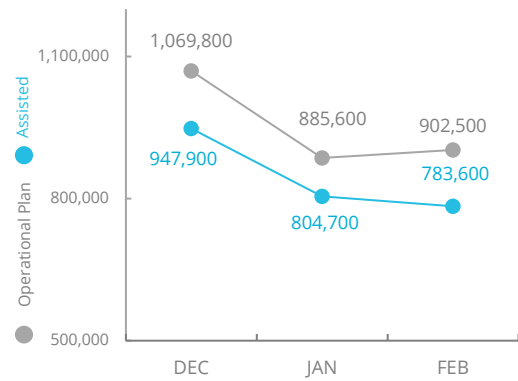


# Nigeria

## PEOPLE ASSISTED



## OPERATIONAL PROFILE

People reached (February)

Assisted	WFP Response
In-kind Food Distributions <b>93%</b> 418,900	Food Assistance: In-kind provided in the Northeast
Cash-Based Transfers <b>92%</b> 339,600	CBT: Ongoing
Nutrition <b>80%</b> 144,800	Nutrition: Ongoing
Livelihoods <b>15%</b> 8,200	Community-based activities: Ongoing

SOURCE: WFP, 17 MAR 2021

## FUNDING

Nigeria Country Strategic Plan

March – August 2021  
**Net funding requirements**

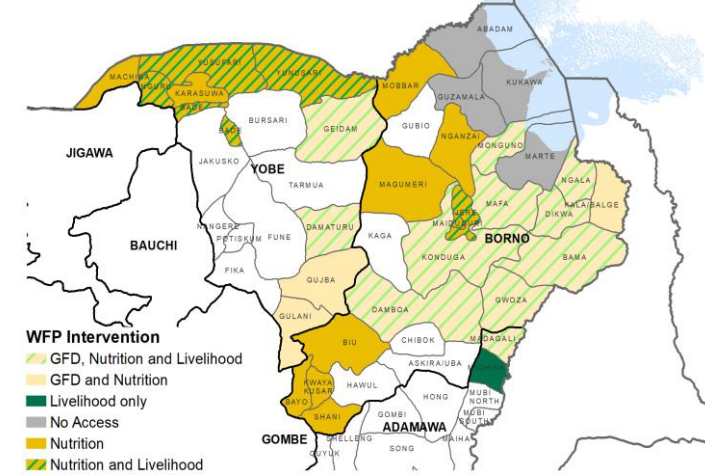
**US\$144m**

**LEVEL 3 RESPONSE**  
Requirements: USD 219.5m



SOURCE: WFP, 12 MAR 2021

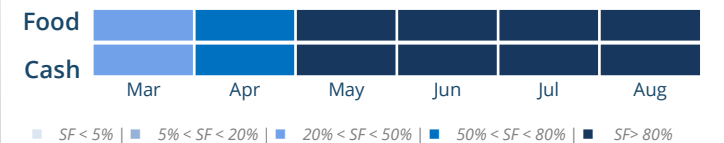
## WFP OPERATIONAL PRESENCE



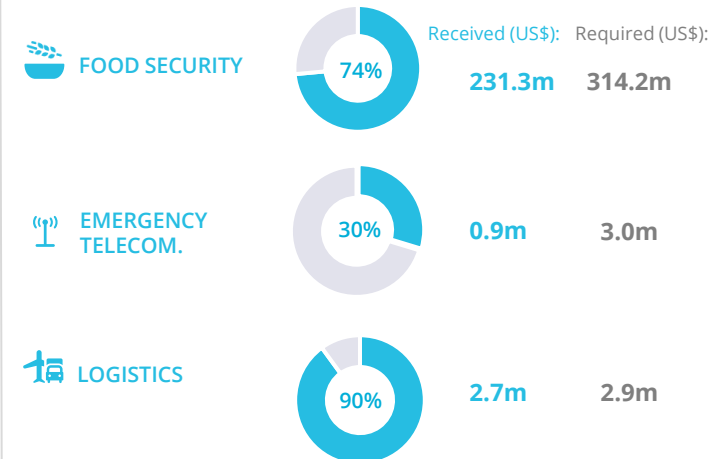
## AVERAGE MONTHLY FUNDING REQUIREMENTS (US\$)



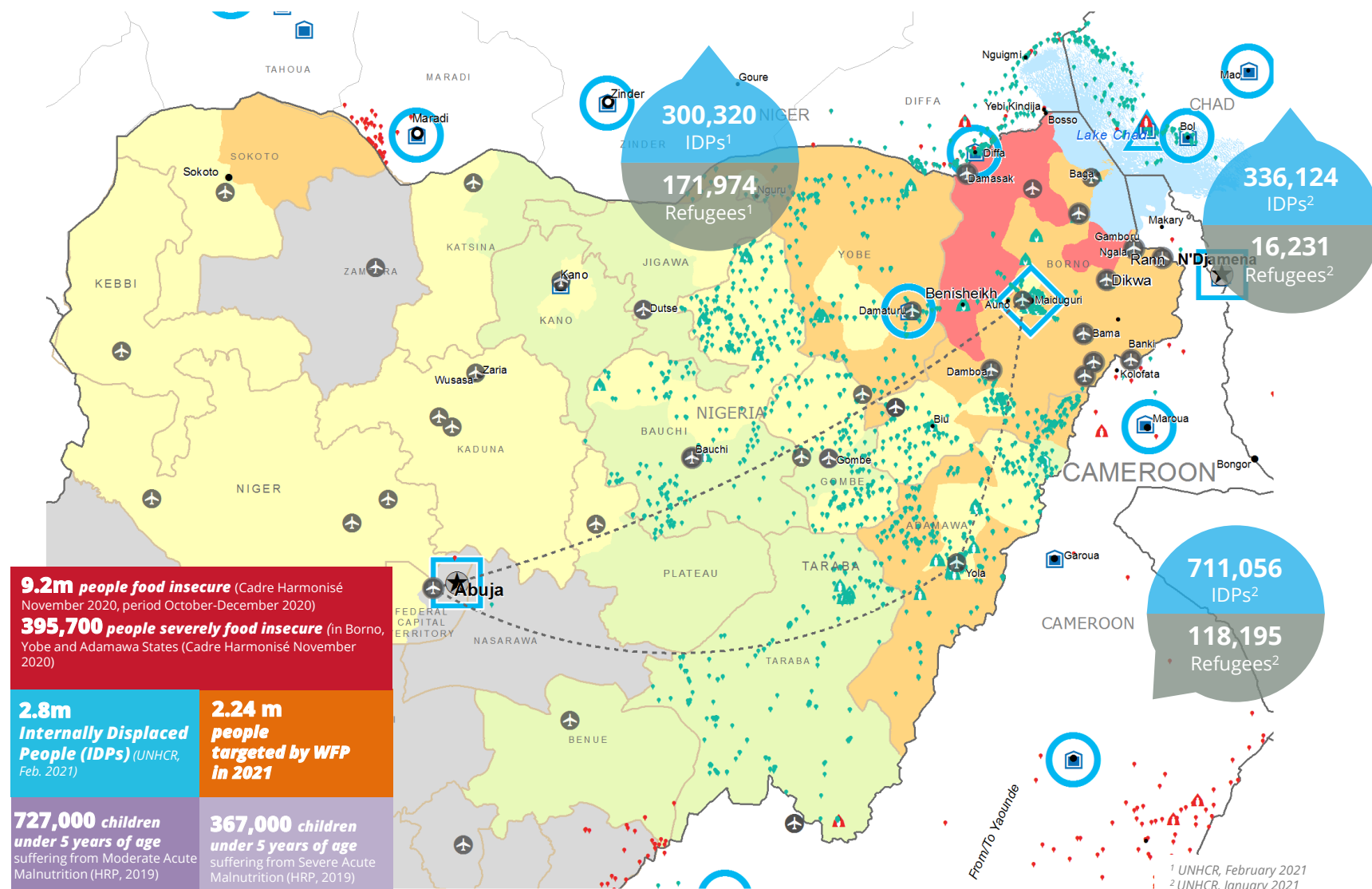
### EXPECTED SHORTFALLS



## WFP-LED AND CO-LED SECTORS



## UN HUMANITARIAN AIR SERVICE (UNHAS)



**9.2m people food insecure** (Cadre Harmonisé November 2020, period October-December 2020)

**395,700 people severely food insecure** (in Borno, Yobe and Adamawa States (Cadre Harmonisé November 2020))

**2.8m Internally Displaced People (IDPs)** (UNHCR, Feb. 2021)

**2.24 m people targeted by WFP in 2021**

**727,000 children under 5 years of age** suffering from Moderate Acute Malnutrition (HRP, 2019)

**367,000 children under 5 years of age** suffering from Severe Acute Malnutrition (HRP, 2019)

**CH Food Security Classification**  
June - August 2021 (Projection)

- No data
- Crisis (Phase3)
- Minimal (Phase1)
- Stressed (Phase2)
- Emergency (Phase 4)
- Famine (Phase5)

Country Office  
Area Office  
Sub Office  
Field Office

UNHAS Connection  
Warehouse

IDP Camp  
IDP Center  
IDP Location

Refugee Camp  
Refugee Center  
Refugee Location

National Capital  
Major Town  
Intermediate Town  
Small town

UNHAS Route  
International Boundary  
Province boundary  
River

Sources: WFP, UNGIWG, GAUL, GLCSC, OCHA, UNHCR.

The designations employed and the presentation of material in the map(s) do not imply the expression of any opinion on the part of WFP the delimitation of its frontiers or boundaries.  
© World Food Programme 2021.

**WFP LEVEL 3 EMERGENCY**  
SINCE 11 AUGUST 2016



SITUATION REPORT and COUNTRY BRIEF