



# WFP PALESTINE EMERGENCY RESPONSE

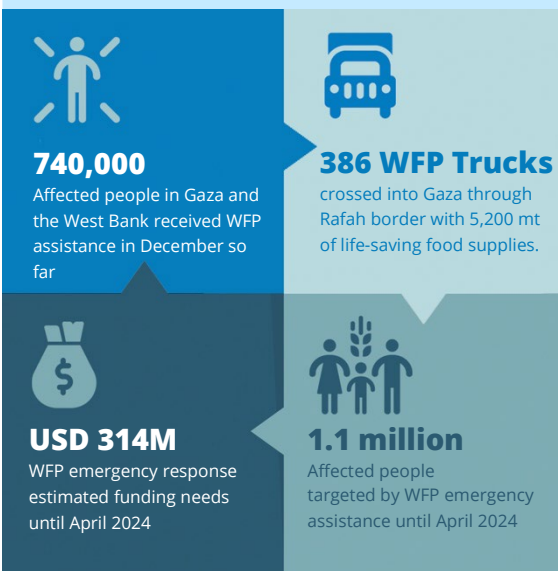
## Situation Report 11

19 December 2023

## HIGHLIGHTS

- After more than two months of conflict, half of the population of Gaza is now facing severe hunger. The latest food security assessment findings show that, in Northern areas, 90 percent of people in Gaza have gone a full day and night without eating. Of those, up to 20 percent have gone 10 out of 30 days without food. In southern areas, one in every two people rely solely on humanitarian assistance to feed their families.
- Upon visiting Gaza on 8 December, WFP Deputy Director Carl Skau witnessed its dire situation with only a fraction of the needed food supplies coming in, absence of fuel, communications interruptions and lack of security for humanitarian staff and civilians at food distributions, hindering WFP operations. Renewed hostilities have further restricted aid efforts, pushing humanitarian operations towards collapse.
- The opening of Kerem Shalom crossing for humanitarian aid trucks into Gaza on 17 December is a long-awaited step to increase the flow of aid into Gaza, which allowed WFP to increase its distributions. However, humanitarian aid alone is not enough. WFP appeals for commercial supply corridors to be restored.
- As needs are soaring, WFP requires a minimum of **USD 314 million** to sustain its emergency response for up to 1.1 million affected people until April 2024. The response is currently 50 percent funded.

### IN NUMBERS



## WFP Operations

### General Food Assistance (GFA)

- In December so far, WFP reached an estimated **740,000 people** with food and cash assistance across Gaza and the West Bank. Across Gaza, WFP assisted **665,000\* vulnerable people** as follows:
  - Around **760,000 internally displaced people (IDPs) in designated shelters** received fortified biscuits, food parcels or wheat flour over the last two weeks.
  - **17,250 displaced people** in host communities received food parcels to support their food needs for 15 days.
  - WFP is supporting **community-kitchens to provide hot meals to IDPs** in partnership with its cooperating partner (CP), Rebuilding Alliance. WFP provided around 30 mt of wheat flour, chickpeas, and salt to community kitchens that have been reaching around 79,265 people across Gaza.
  - To support 57,500 pregnant and breastfeeding women and children aged 6-59 months, WFP in

*\*The total beneficiaries figure accounts for overlap between people receiving more than one type of assistance.*

## Situation Update

- The resumption of hostilities has pushed people into further displacement. Now, 1.9 million, 85 percent of the population is displaced, with around 1 million people sheltering in Rafah. People are setting up makeshift tents or residing in shelters over-exceeding their capacity, with no food, water, nor basic sanitary conditions.

partnership with the CP Sharek, began distributions of Lipid-Based Nutrient Supplement – a paste specifically made to complement their additional nutritional needs.

- WFP has shifted its cash-based transfer assistance to in-kind as shops have run out of food. WFP is supporting local retailers by setting up food parcel distributions at WFP-contracted shops whose owners receive a transaction fee for their service.



## Supply Chain

- Following the agreement for WFP to pilot the delivery of aid from Jordan to Gaza, 46 trucks organized by WFP and the Jordan Hashemite Charity Organization, carrying around 750 mt of life-saving food are on their way to Gaza through Kerem Shalom border crossing between Jordan and Israel. This would be the first convoy to move through Jordan corridor.
- In the first two weeks of December, around 120 WFP trucks with over 1,600 mt of food items crossed into Gaza and were immediately dispatched for distribution in coordination with CPs. Since 21 October, WFP has delivered over 4,500 mt of food items through 342 trucks into Gaza.
- Currently, **200 WFP** trucks loaded with around 4,000 mt of food commodities in Egypt and **80 trucks** in Jordan are ready to cross into Gaza through Kerem Shalom and Rafah crossing points. Additional 4,000 mt of food stocks are currently at Port Said (Egypt) awaiting clearance, of the and around 9,700 mt are under procurement to support Gaza emergency response.
- WFP has contracted a new warehouse in Rafah with 4,000 m<sup>2</sup> capacity to support the pre-positioning of aid supplies before dispatching to partners and distribution points across Gaza.

## Clusters and Common Services



### Logistics Cluster

- The Logistics Cluster together with the IMPACCT Working Group conducted a debriefing session with partners on 5 December to share the outcomes of the National Workshop on Customs Procedures for the Importation of Humanitarian Aid. The [Debriefing presentation](#) is available on the [Palestine Logistics Cluster operation webpage](#).
- In Gaza, the Logistics Cluster installed a total of 14 mobile storage units (MSUs) to augment the offloading capacity in the Rafah handover point and enhance storage capacity on behalf of four humanitarian partners.

- In Al Arish (Egypt), the Logistics Cell installed 10 MSUs with a 3,200 m<sup>2</sup> space to augment the Egyptian Red Crescent storage capacity. The space has also dedicated set-up for the temperature-controlled cargo through four inflatable cold rooms.
- The temporary storage in Rafah is now operational and has started receiving shipments from partners.



### Emergency Telecommunications Cluster (ETC)

- ETC procured 20 fully activated satellite phones on 8 December to enhance communication amongst humanitarian responders.
- ETC is currently coordinating and engaging with 31 organizations in the Gaza conflict emergency response.



### Funding

- WFP urgently requires at least USD 314 million in funding to provide support for up to 1.1 million people until April 2024.
- As of now, WFP has USD 156.1 million confirmed contributions: USD 139.8 million from government donors (mainly from Canada, European Union (ECHO), France, Germany (GFFO), Sweden, Switzerland, and USA among others) and USD 16.2 million from the private sector including Share The Meal and Individual Giving campaigns.



### Gaza Market Monitoring

- WFP [food security assessment](#) carried out during the humanitarian pause showed that in northern areas, 90 percent of people have gone a full day and night without eating. In southern areas, one in every two people rely solely on humanitarian assistance to feed their families.
- Over the last 12 days since the end of the pause on 1 December, IDP households in southern Gaza showed severe levels of hunger and extreme consumption based coping strategies, higher than during the pause. In the northern governorates, households are expected to face catastrophic situation, having experienced already worse conditions during the pause.



### Accountability to Affected Populations

- WFP received approximately 85,266 calls through the Inter-Agency community feedback mechanism (CFM) helpline, which provides a direct link between WFP and the affected population. Over 75 percent of the calls are requests for food or cash assistance. Some 2,447 are for shelter support.