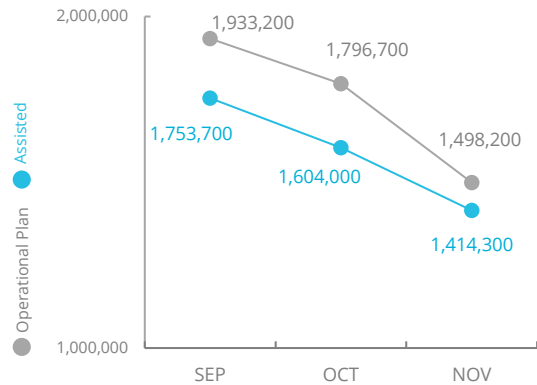


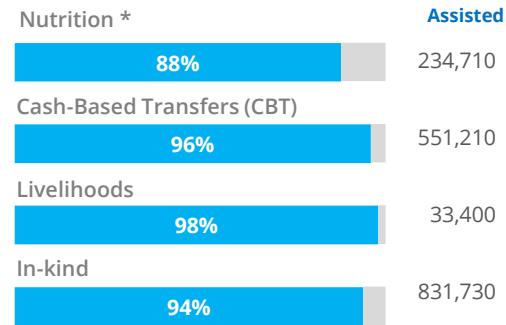
Nigeria

PEOPLE ASSISTED



OPERATIONAL PROFILE

People reached (November)



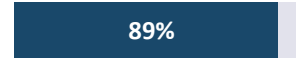
FUNDING

Nigeria Country Strategic Plan

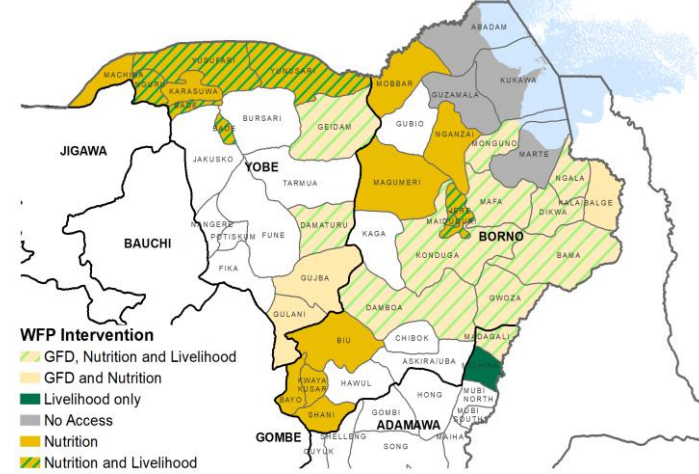
January - June 2022 (6 months)

Net funding requirements
US\$227.5m

LEVEL 3 RESPONSE
Requirements: USD 255m



WFP OPERATIONAL PRESENCE

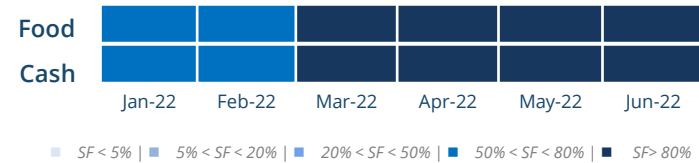


AVERAGE MONTHLY FUNDING REQUIREMENTS

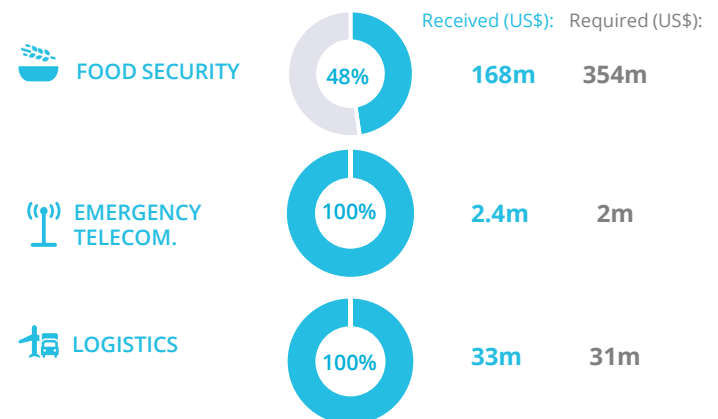
(6 Months - US\$)



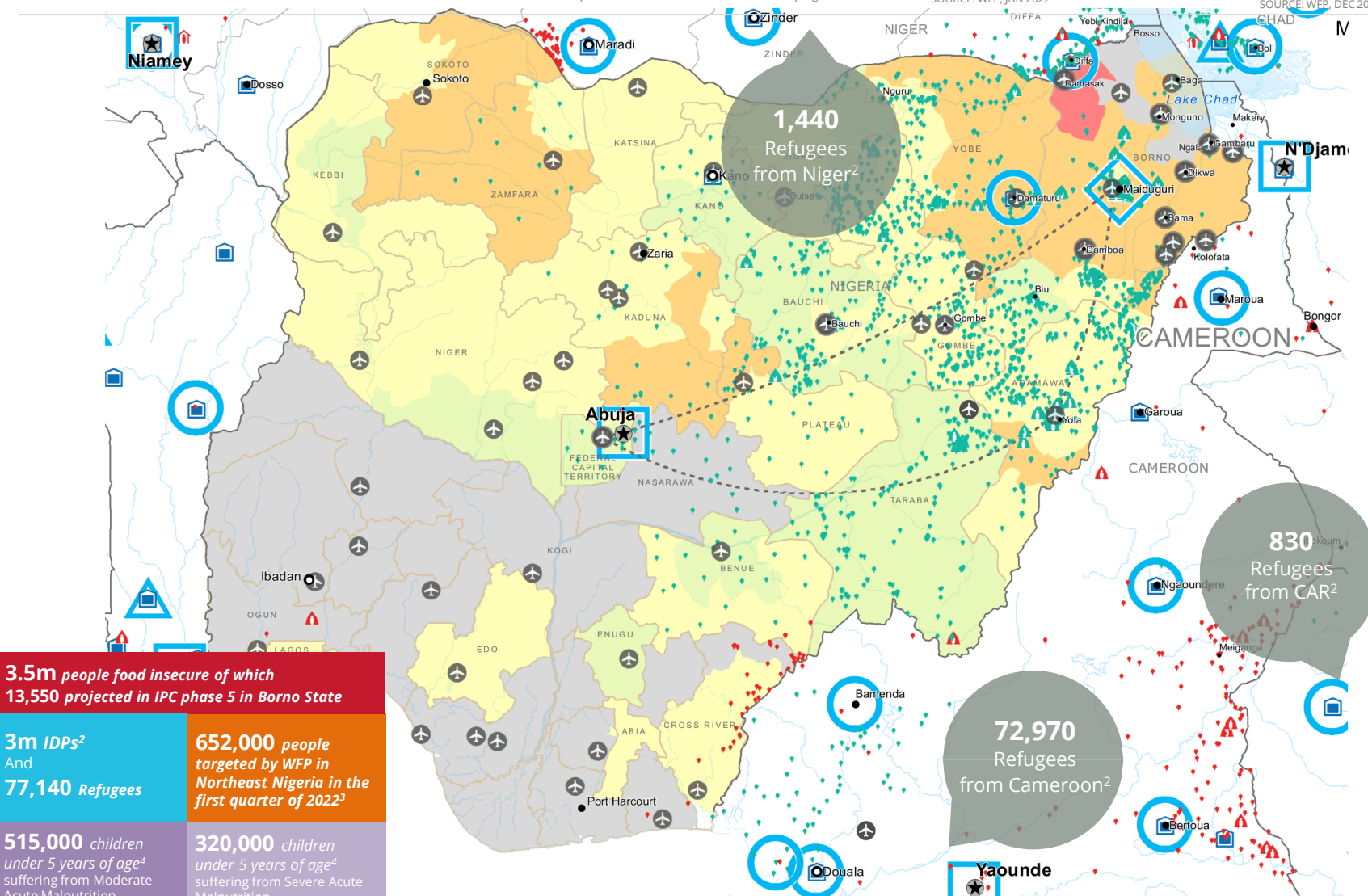
EXPECTED SHORTFALLS



WFP-LED AND CO-LED SECTORS



UN HUMANITARIAN AIR SERVICE (UNHAS)



3.5m people food insecure of which 13,550 projected in IPC phase 5 in Borno State

3m IDPs² And 77,140 Refugees

652,000 people targeted by WFP in Northeast Nigeria in the first quarter of 2022³

515,000 children under 5 years of age⁴ suffering from Moderate Acute Malnutrition

320,000 children under 5 years of age⁴ suffering from Severe Acute Malnutrition

¹ Cadre Harmonisé Nov 2021, period June-August 2022, ² Internally Displaced People (IDPs), UNHCR, December 2021, ³ WFP Nigeria, ⁴ HRP, 2021

- CH Food Security Classification** (June - August 2022 (Projection))
 - No data
 - Crisis (Phase 3)
 - Minimal (Phase 1)
 - Emergency (Phase 4)
 - Stressed (Phase 2)
 - Famine (Phase 5)
- Country Office
- Area Office
- Sub Office
- Field Office
- UNHAS Connection
- Warehouse
- IDP Camp
- IDP Center
- IDP Location
- Refugee Camp
- Refugee Center
- Refugee Location
- National Capital
- Major Town
- Intermediate Town
- Small town
- UNHAS Route
- International Boundary
- Province boundary
- River
- Surface Waterbody

Sources: WFP, UNGIWG, GAUL, GLCS, OCHA, UNHCR.

The designations employed and the presentation of material in the map(s) do not imply the expression of any opinion on the part of WFP the delimitation of its frontiers or boundaries. © World Food Programme 2022.

WFP LEVEL 3 EMERGENCY
SINCE 11 AUGUST 2016

SITUATION REPORT and COUNTRY BRIEF