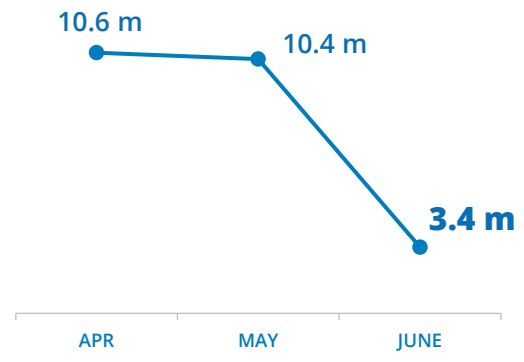


# Yemen

Emergency Dashboard | June 2023

## PEOPLE ASSISTED

All activities



## WFP OPERATIONAL PROFILE

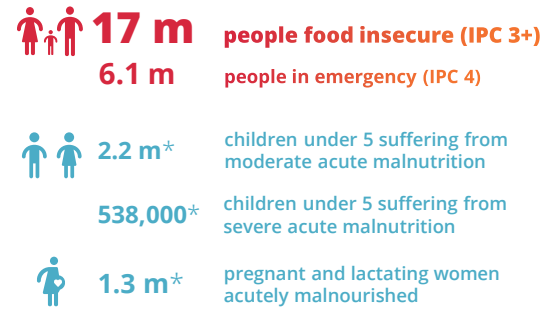
By activity (June)

Activity	Assisted
General Food Assistance	2.9 m
Cash assistance	46,800
School Feeding	N/A
<i>SCHOOLS CLOSED FOR SUMMER</i>	
Treatment of Moderate Acute Malnutrition	1.5 m
Prevention of Acute Malnutrition	566,400
Resilience and Livelihoods	36,600
<b>People assisted across all activities:</b>	<b>3.4 m</b>

SOURCE: WFP YEMEN, JUNE 2023

## PEOPLE IN NEED

Food security and nutrition



SOURCES: IPC UPDATE, 16 NOV 2022; \*IPC ANALYSIS, 14 MARCH 2022

## FUNDING

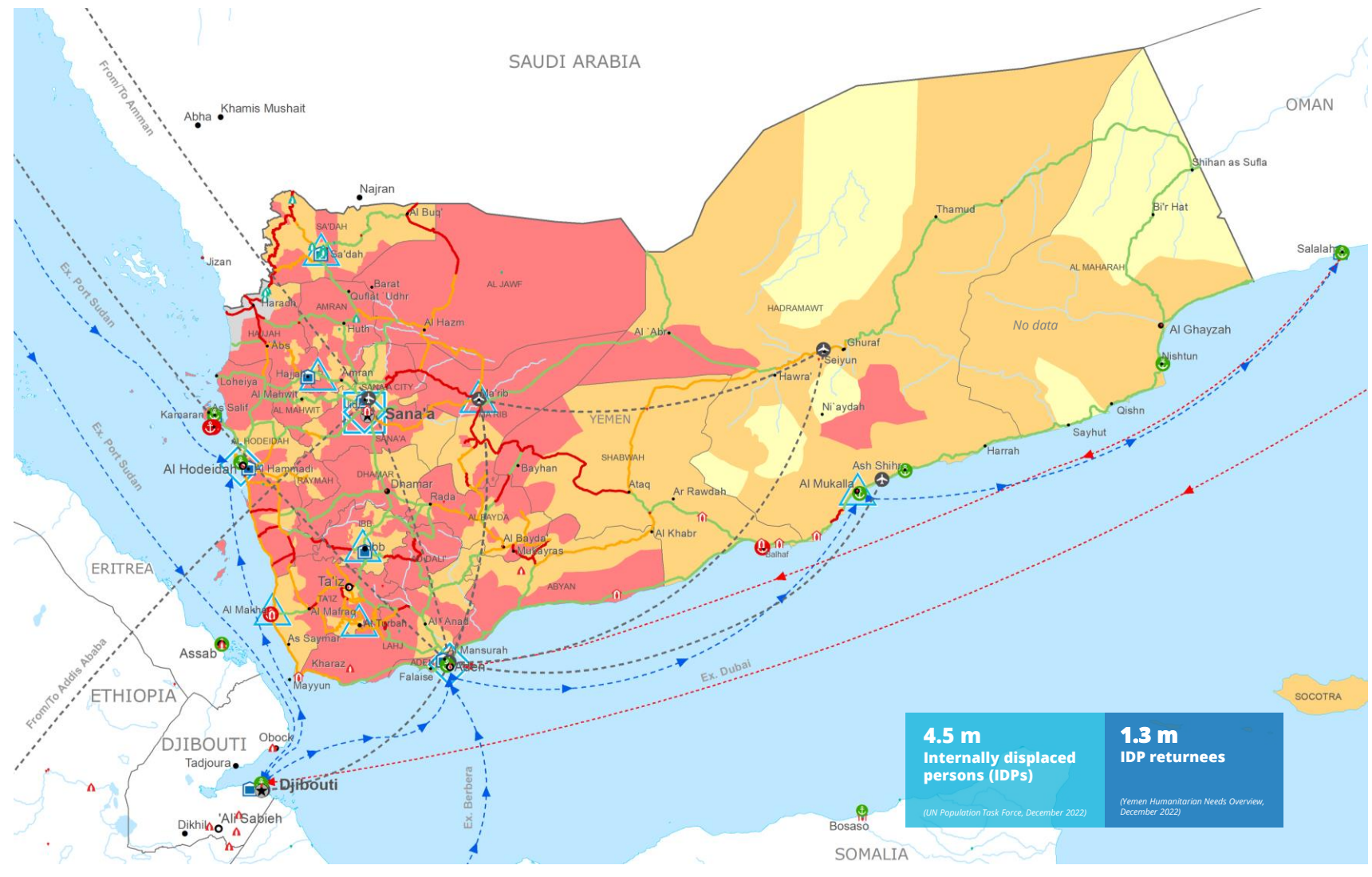
WFP Yemen Interim Country Strategic Plan 2023 - 2025

August 2023 - January 2024

# US\$ 1.05 bn

Net funding requirement

**2023 WFP RESPONSE**  
Requirement: US\$ 2.95 bn  
Needs resourced (as of 26 June): US\$ 1.05 bn

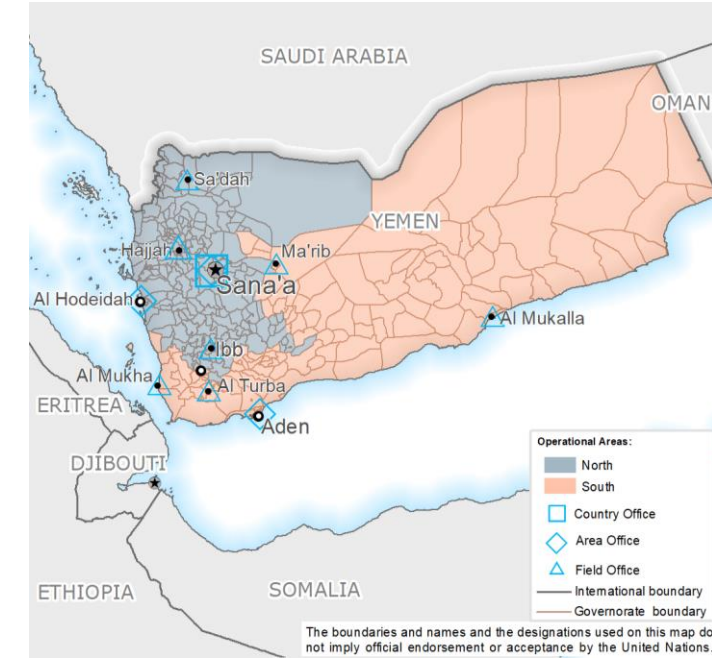


**4.5 m** Internally displaced persons (IDPs)  
*(UN Population Task Force, December 2022)*

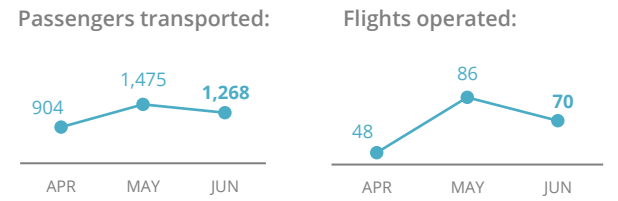
**1.3 m** IDP returnees  
*(Yemen Humanitarian Needs Overview, December 2022)*

## WFP YEMEN OPERATIONAL AREAS

As of June 2023



## UN HUMANITARIAN AIR SERVICE (UNHAS)



### Integrated Food Security Phase Classification (IPC) Projection, October - December 2022

No data	Crisis (Phase 3)	Country Office	Field Office	Port Closed	UNHAS Connection	Road Open	IDP Camp	Refugee Camp	National Capital	International Boundary
Minimal (Phase 1)	Emergency (Phase 4)	Area Office	Warehouse	Port Operational	UNHAS Route	Road with Restricted Access	IDP Center	Refugee Location	Major Town	Governorate Boundary
Stressed (Phase 2)	Famine (Phase 5)	Supply Route Open	Supply Route Closed	Port with Restricted Access	Road Closed	IDP Location	Intermediate Town	Small Town	River	

WFP EMERGENCY CLASSIFICATION:

# CORPORATE ATTENTION

For more information, see the related WFP Yemen Situation Report (June 2023). See also the Yemen page on WFP.org [here](#).