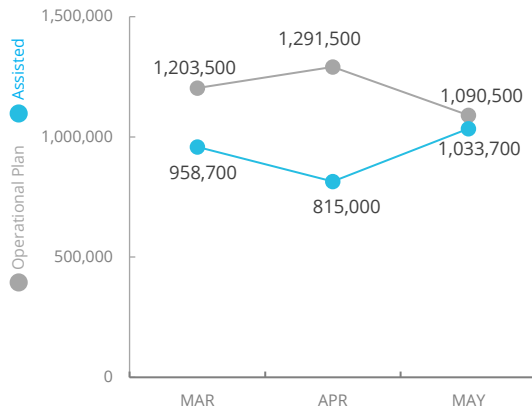


# Democratic Republic of Congo

Emergency Dashboard | June 2021

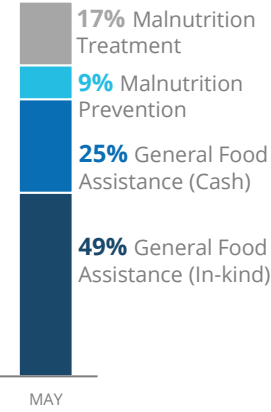
## PEOPLE ASSISTED

DR Congo Country Strategic Plan

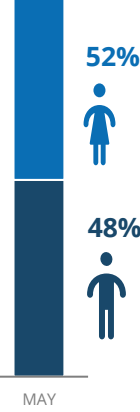


## OPERATIONAL PROFILE

By Activity



By Sex



## COVID-19 OPERATIONAL IMPACT

Status WFP Response adjusted

- Extended distribution timelines
  - Crowd control and social distancing measures at distribution sites
  - Mandatory hygiene measures at distribution sites
  - School feeding through take home rations
- Legend: ✔ Ongoing ! Partially Suspended ✘ Suspended

## FUNDING

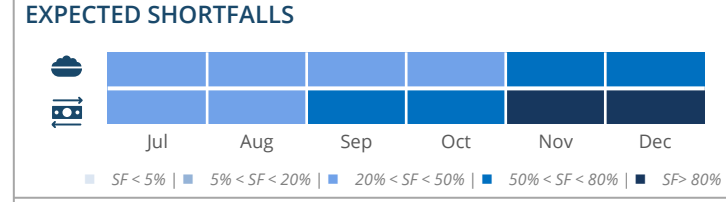
DR Congo Country Strategic Plan (CSP)  
July 2021 – December 2021

Net funding requirements  
**US\$153m**

2021 LEVEL 3 RESPONSE  
Requirements US\$662.5m

## AVERAGE MONTHLY FUNDING REQUIREMENTS (US\$)

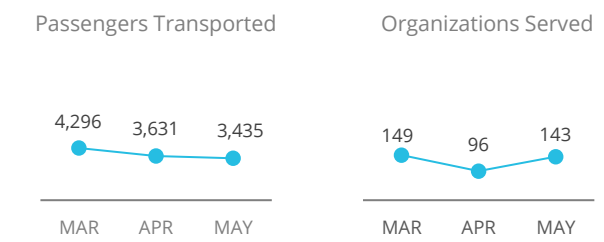
Food: 29.2m Cash: 16.7m



## WFP-LED AND SUPPORTED CLUSTERS



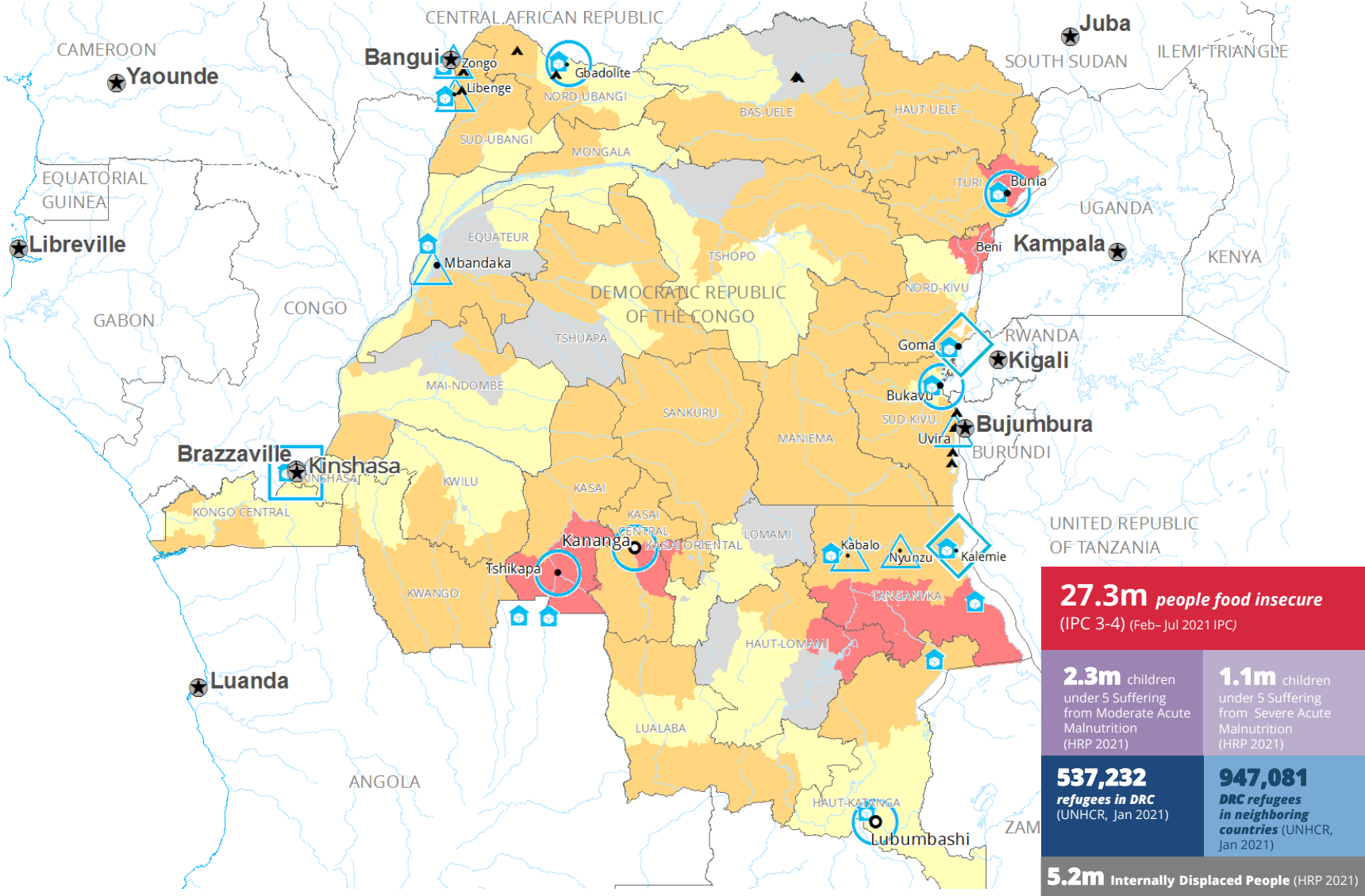
## UN HUMANITARIAN AIR SERVICES (UNHAS)



## WFP LEVEL 3 EMERGENCY

SITUATION REPORT and COUNTRY BRIEF

Gender and Age Marker **3**



**Acute Food Insecurity Phase February–July 2021**

- No data
- Minimal
- Stressed
- Crisis
- Emergency
- Famine

  Country Office  
  Area Office  
  Sub Office  
▲ Field Office  
■ Warehouse  
▲ Refugee Camp  
★ National Capital  
● Major Town  
● Intermediate Town  
● Small town  
 International Boundary  
 Province boundary  
— River

Sources: WFP, UNGIWG, GAUL, GLCSC, OCHA, UNHCR, IPC.  
The designations employed and the presentation of material in the map(s) do not imply the expression of any opinion on the part of WFP concerning the legal or constitutional status of any country, territory, city or sea, or concerning the delimitation of its frontiers or boundaries.  
© World Food Programme 2021.

