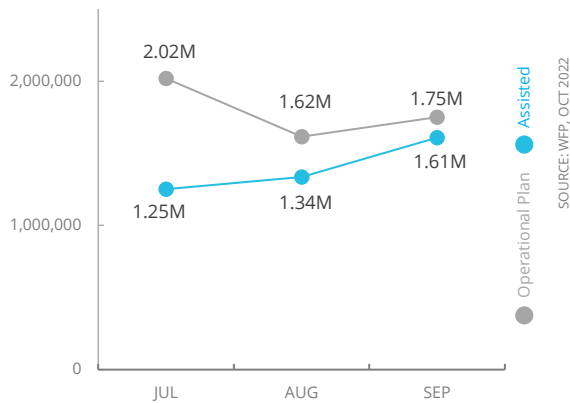


Democratic Republic of Congo

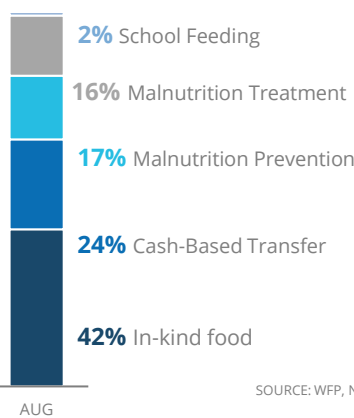
PEOPLE ASSISTED

DR Congo Country Strategic Plan (CSP)

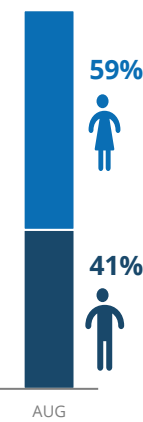


OPERATIONAL PROFILE

By Activity



By Sex



FUNDING

DR Congo Country Strategic Plan
November 2022 – April 2023

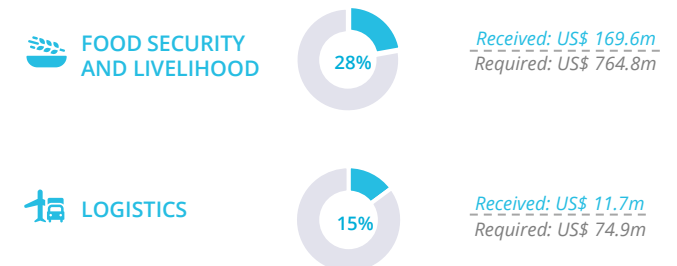
Net funding requirements
US\$137.1m

2022 Emergency Response Requirement **US\$625.3m**

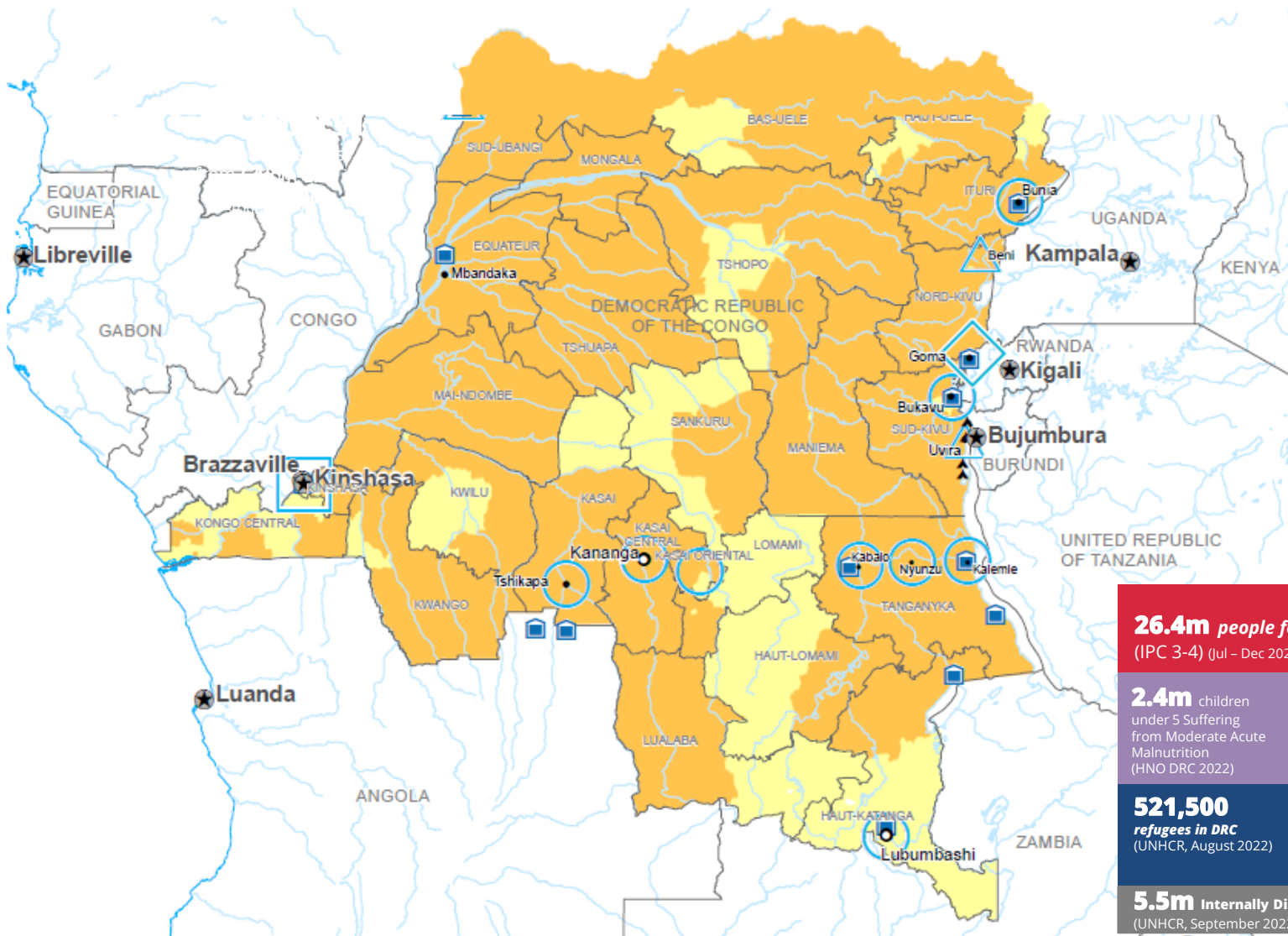
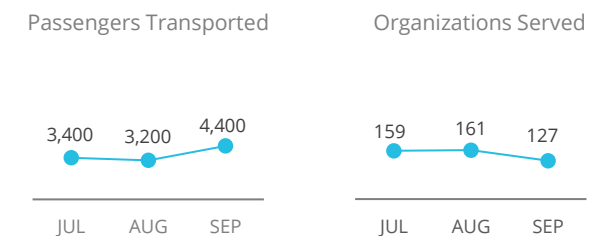
AVERAGE MONTHLY FUNDING REQUIREMENTS (US\$)

Food: 36m Cash: 15.4m

WFP-LED AND SUPPORTED CLUSTERS



UN HUMANITARIAN AIR SERVICES (UNHAS)



Integrated Phase Classification Projection July - January 2022



Sources: WFP, UNGIWI, GAUL, GLCSC, OCHA, UNHCR, IPC.

The designations employed and the presentation of material in the map(s) do not imply the expression of any opinion on the part of WFP concerning the legal or constitutional status of any country, territory, city or sea, or concerning the delimitation of its frontiers or boundaries. © World Food Programme 2022.

WFP EMERGENCY CLASSIFICATION: CORPORATE ATTENTION
SINCE 01 FEB 2022



SITUATION REPORT and COUNTRY BRIEF

