



WFP Mozambique Situation Report #2

18 March 2022

In Numbers

448,800 people affected

5 provinces affected

20,957 people displaced

44 temporary transit centers

88,443 houses damaged or destroyed

469 schools damaged or destroyed

143,904 students impacted

67,752 ha of crop fields lost

41 health centers damaged or destroyed

Highlights

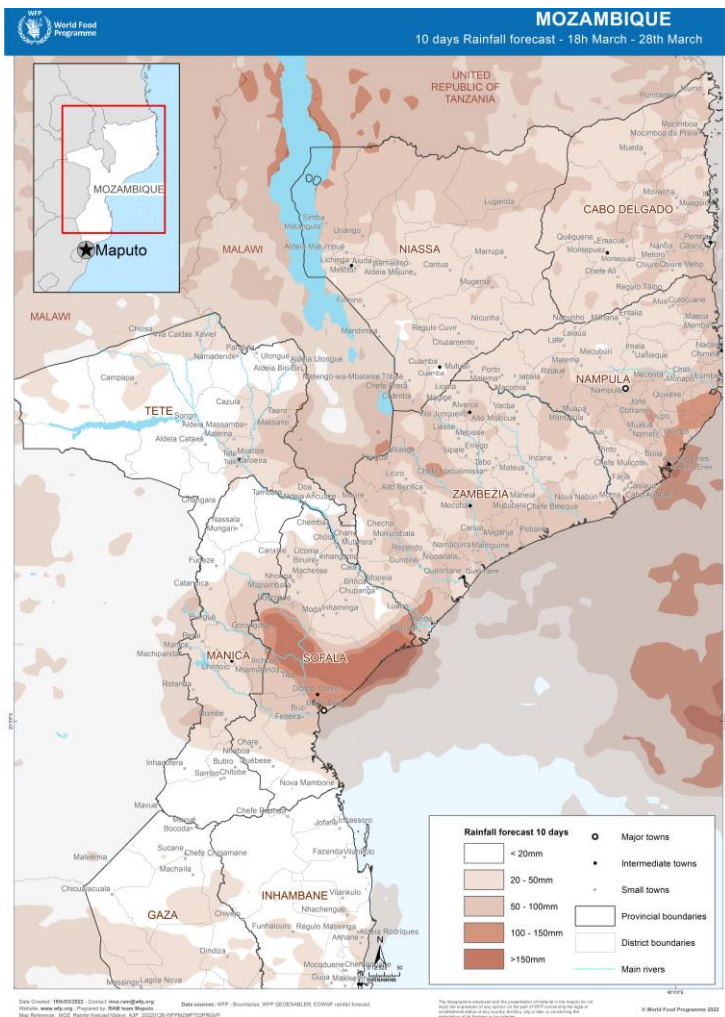
- In Zambezia, WFP will assist 8,616 people in transit centers with 7 day- food rations.
- The destruction of 67,752 ha of crop fields raises the alert for a high probability of food shortage in the near future.
- Ongoing rainfall still presents a significant risk of flooding in the coming week.

WFP's response

- In Zambezia, WFP will assist 8,616 people in transit centers with 7 day- food rations. WFP is also mobilizing to assist people who return to their areas of origin in coordination with the National Institute of Disaster Risk Management (INGD).
- In Nampula, WFP is also mobilizing to assist people in transit centers in coordination with INGD.
- WFP will resume food distributions to displaced people in Corrane resettlement site as soon as road access is granted.
- WFP is supporting INGD with humanitarian staff and resources to provide food to people most affected and logistics support to search & rescue and relief operations if needed.
- WFP has resources to assist 48,500 people with a 7-day ration in transit centres and a 30-day return ration.
- WFP created an interactive map ([link](#)) to monitor the cyclone season in Mozambique.

Situation Update

- Cyclone Gombe made landfall 50 km south of Ilha de Mozambique, near the districts of Mongincual and Mossuril on 11 March, hitting areas affected by Tropical Storm Ana.
- Residuals of Cyclone GOMBE are still bringing rains and moderate winds in coastal areas of Zambezia. It should definitely dissipate in the afternoon of 18 March over Malawi.
- Rainfall in the next 7 days is forecast to central and Northern Sofala and southern Zambezia.
- In the next 72h, a significant increase in water levels is expected of Buzi, Pungoe, and Zambezi rivers. Other rivers in coastal areas of Nampula and Zambezia will see their levels reduced.
- Forecast of urban flooding in Beira, Dondo and Quelimane
- Current flooding in Nicoadala, Mangaja da Costa, lower Namacurra districts (Zambezia Province), and in Nacala Porto and Monapo District (Nampula).
- The Indian Ocean gathers favorable conditions to the formation of new tropical storms. Hence, the cyclone season is likely to be over only in late April. A low-probability new tropical depression closer to Madagascar.
- Access remains difficult in Mongincual, Liupo, and Angoche in Nampula province.
- Ilha de Moçambique remains without power.
- The impact of Cyclone Gombe is becoming clearer as assessments are being conducted by INGD supported by WFP and other partners. Due to access constraints, WFP expects complete results to be available mid-next week.



Zambezia

- Most affected districts are in the north of the province: Pebane, Gilé, Mulevala, Mocubela, Maganja da Costa, and Alto Mulocue.
- Urban and peri-urban flooding was reported in Quelimane-Maquival.
- Quelimane city and northern districts expect more rain and flooding in the coming 7 days.
- WFP will provide 7-day emergency food rations via commodity vouchers to 8,616 people in transit centers.
- WFP is also mobilizing to assist people with return food packs, in coordination with INGD.

Tete

- Potentially affected districts mostly by flooding because of the rain coming from Malawi: Mutarara, Doa, Angonia and Tsangano. Access by car remains a challenge in these areas.
- Almost all districts experienced rainfall.

Cabo Delgado

- Despite the conflict crisis affecting nearly 900,000 people in Cabo Delgado, WFP has deployed staff and logistics support from Pemba to Nampula to help conduct rapid food security assessments to cyclone Gombe most affected areas.
- WFP is concerned about the growing needs in Nampula, and the impacts the already constrained resourcing situation of WFP's operations in Cabo Delgado.

Sofala

- Currently, rainfall is reported for the past 3 days in Beira and some flooding is reported in lower areas. WFP is closely monitoring the situation.

Contacts

Antonella D'Aprile, Country Director, WFP Mozambique

Francesco Stompanato, RAM,
francesco.stompanato@wfp.org

Geert Gompelman, Emergency Coordinator,
geert.gompelman@wfp.org

Denise Colletta, Communications Officer,
denise.colletta@wfp.org

For further information, visit Mozambique page on www.wfp.org/mozambique



Situation per province

Nampula

- Most affected districts: Angoche, Liupo, Memba, Rapale, Mecuburi, Muecati, Nacarrôa, Monapo, Mogincual, Mossuril, Nacala, Ilha de Moçambique and Nampula city.
- Corrane IDP site, where 7,000 IDPs from Cabo Delgado are hosted has currently food stocks for 5 days to support families. Distributions will be resumed as soon as access is possible.
- In Lunga, access is hard and 90-99% of houses were reportedly damaged.
- Mongincual is accessible only via alternative road. There is a concern that isolated people are in need of food assistance. WFP team will access it by the alternative road on 18 March.
- INGD is conducting a damage assessment on the roads and infrastructure affected supported by WFP.
- WFP is in coordination with INGD to provide food assistance to people in need in transit centers. WFP's current funding is limited to assist displaced people.

Niassa

- The city of Cuamba is partially isolated, INGD has transformed the temporary transit centers, into a settlement area hosting 401 people.