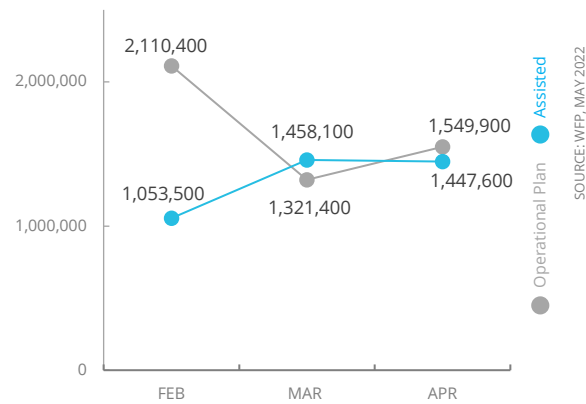


Democratic Republic of Congo

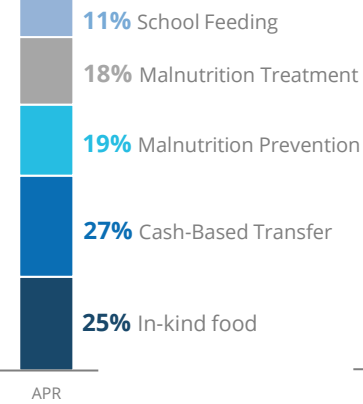
PEOPLE ASSISTED

DR Congo Country Strategic Plan (CSP)

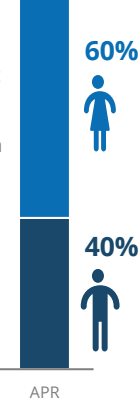


OPERATIONAL PROFILE

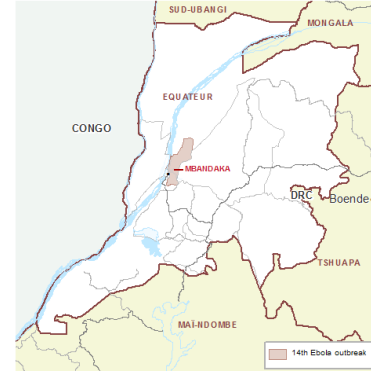
By Activity



By Sex



EBOLA OUTBREAK (EQUATEUR PROVINCE)



WFP, the Logistics Cluster and UNHAS are providing logistics & transportation services, including of vaccines, to the area.

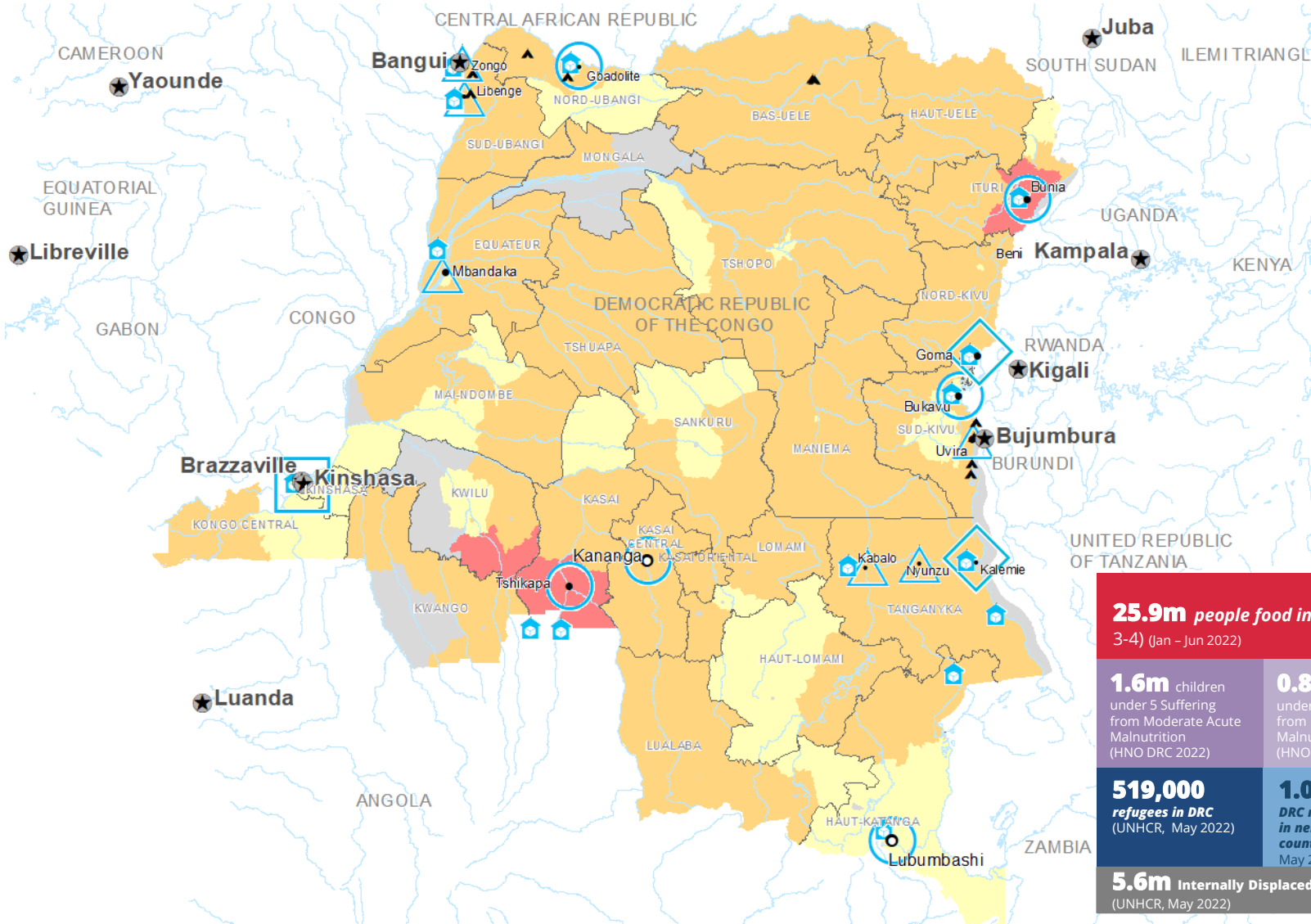
CASES: 5 (4 confirmed, 1 probable); DEATHS: 5; FIRST SYMPTOMS RECORDED: 05 APR 2022; PEOPLE AFFECTED & AT RISK: 408,265

FUNDING

DR Congo Country Strategic Plan
June – November 2022

Net funding requirements
US\$108.5m

2022 LEVEL 3 RESPONSE
Requirements US\$645.4m



25.9m people food insecure (IPC 3-4) (Jan - Jun 2022)

1.6m children under 5 Suffering from Moderate Acute Malnutrition (HNO DRC 2022)

0.8m children under 5 Suffering from Severe Acute Malnutrition (HNO DRC 2022)

519,000 refugees in DRC (UNHCR, May 2022)

1.0m DRC refugees in neighboring countries (UNHCR, May 2022)

5.6m Internally Displaced People (UNHCR, May 2022)

Integrated Phase Classification Projection January - June 2022

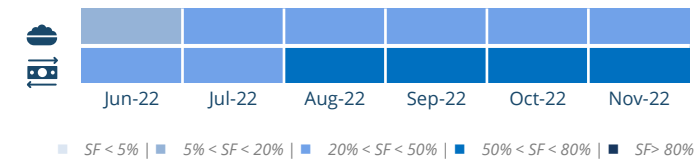
- No data
- Crisis (Phase 3)
- Minimal (Phase 1)
- Emergency (Phase 4)
- Stressed (Phase 2)
- Famine (Phase 5)
- Country Office
- Field Office
- Area Office
- Warehouse
- Refugee Camp
- National Capital
- Major Town
- Intermediate Town
- Small Town
- International Boundary
- Province Boundary
- River

Produced by the WFP Operations Centre (OPSCEN) jointly with Country Office and Regional Bureau for Southern Africa. This dashboard is based on best available information at the time of production. Future updates may vary as new information becomes available.

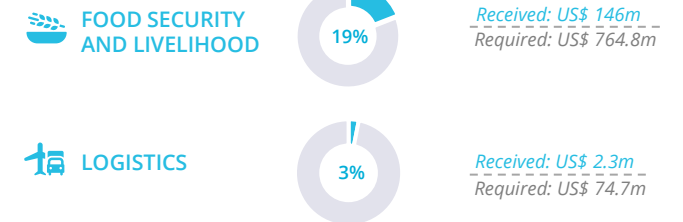
AVERAGE MONTHLY FUNDING REQUIREMENTS (US\$)

Food: 30.9m Cash: 17.9m

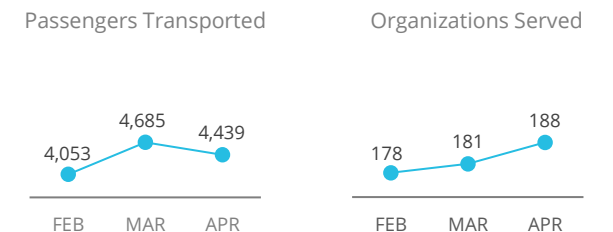
EXPECTED SHORTFALLS



WFP-LED AND SUPPORTED CLUSTERS



UN HUMANITARIAN AIR SERVICES (UNHAS)



Sources: WFP, UNGIWI, GAUL, GLCSC, OCHA, UNHCR, IPC.
The designations employed and the presentation of material in the map(s) do not imply the expression of any opinion on the part of WFP concerning the legal or constitutional status of any country, territory, city or sea, or concerning the delimitation of its frontiers or boundaries.
© World Food Programme 2022.

WFP EMERGENCY CLASSIFICATION:
CORPORATE ATTENTION
SINCE 01 FEB 2022



SITUATION REPORT and COUNTRY BRIEF

