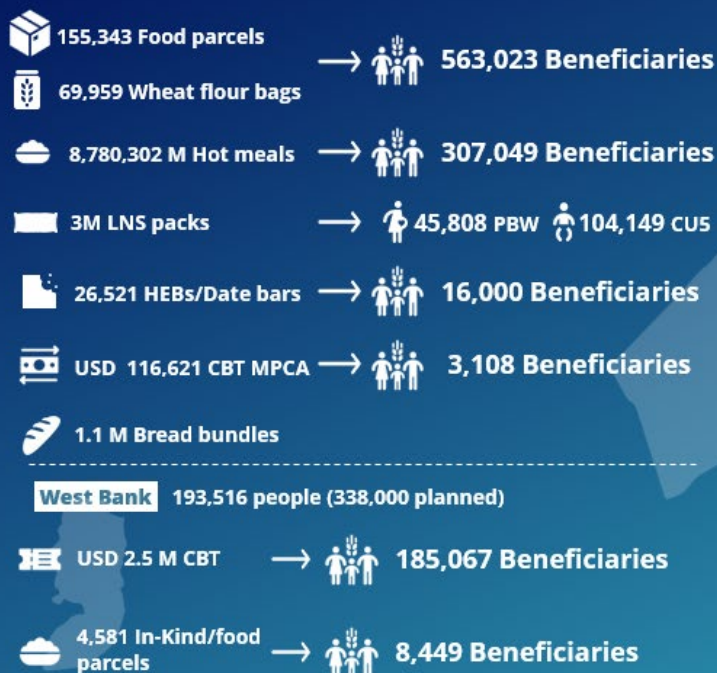


WFP PALESTINE EMERGENCY RESPONSE External Situation Report 46

HIGHLIGHTS

- Since the ceasefire came into effect on 19 January, WFP has resumed full-fledged food distributions, and assisted over 330,000 people. Beneficiaries received significantly more rations, and hot meals. In addition, the number of operational bakeries increased from 5 to 18.
- Security improved, and looting nearly disappeared, allowing for safer operations. Enhanced border crossings enabled inter-agency movements through the WFP-led Logistics Cluster to fully meet the humanitarian target of 4,200 trucks per week set by the parties to the conflict.
- The humanitarian situation in the West Bank is also critical. WFP is providing emergency cash assistance to displaced households from Jenin refugee camp affected by military operations.

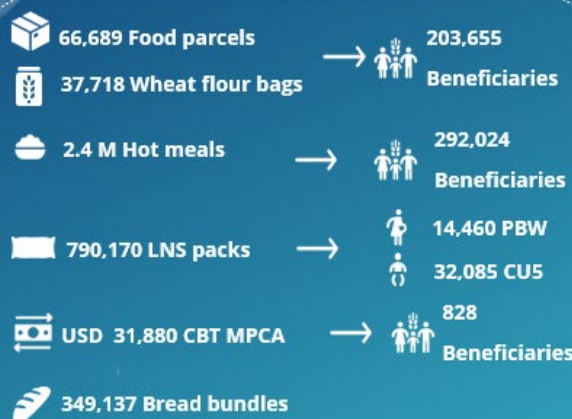
JANUARY IN NUMBERS 1 to 25 Jan



Palestine 791,222 people (1.4 million planned)

Gaza 597,706 people (1.1 million planned)

Since the ceasefire 332,286 beneficiaries



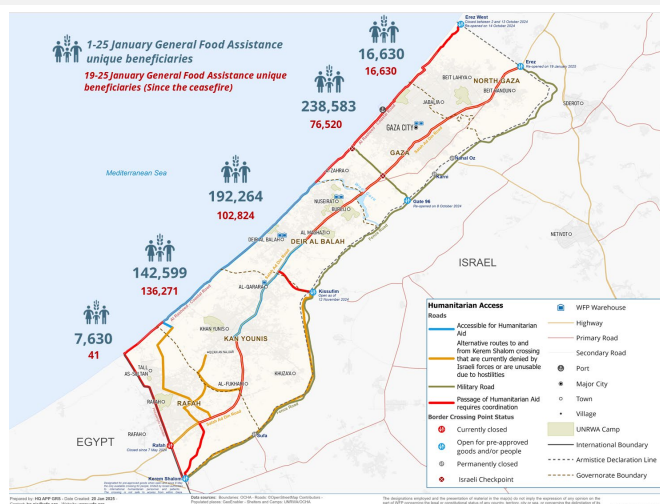
WFP six-month net funding requirement

USD 327 M February to July 2025

These numbers are subject to change due to the finalization of the month's reporting figures from partners. The total beneficiaries figure accounts for overlap between people receiving more than one type of assistance (LNS figures are not included). PBW: Pregnant and breastfeeding women and girls. CU5: Children under five.

SITUATION UPDATE

- Displaced families started to return to northern Gaza since 26 January, following Israeli forces withdrawals from the Netzarim Corridor area. Three border crossings are operating at full capacity, which allows aid deliveries, including WFP cargo, to move without security incidents.
- [WFP Monitoring Report for January 2025](#) highlights that while prices have slightly dropped, essentials remain above pre-crisis levels and unaffordable for many due to the lack of cash for most households. Cash liquidity is also a major concern for most shop owners.
- Rising violence and population movement restrictions are severely impacting the **West Bank**. Increased military checkpoints and attacks on Palestinian villages are a cause



of significant concern. Israel's "Iron Wall" campaign in the West Bank began almost as soon as the Gaza ceasefire commenced, with an ongoing incursion into the Jenin Refugee Camp in the north.

WFP OPERATIONS

General Food Assistance in Gaza (19-25 January)

- In the first week of the ceasefire, WFP provided general in-kind food assistance (GFD) and cash-based transfers (CBT) to over **332,286 vulnerable people in Gaza**. **The total beneficiaries figure accounts for overlap between people receiving more than one type and duration of assistance. Monthly distribution figures are estimates and subject to change pending final beneficiary reconciliation.*
- WFP was able to deliver full GFD rations—**two ready to eat (RTE) food parcels and a 25kg wheat flour bag per household**—which marks a major improvement from pre-ceasefire reductions. Since the ceasefire, WFP has reached **203,655 beneficiaries with RTE rations** and delivered 37,718 wheat flour bags.
- 18 WFP bakeries are now operational (compared to five, pre-ceasefire)**; eight in Deir al Balah, five in Khan Younis, and five in Gaza City. Two bakeries in North Gaza remain non-operational due to damage, and WFP plans to expand capacity in the area. Bread is also sold at five retail shops and delivery of free bread has resumed in Gaza City and the Middle/South. WFP-supported bakeries in Gaza City produced over **349,137 bread bundles**.
- WFP provided **2.4 million hot meals** to **292,024 people** through 61 kitchens across the Strip. On 28 January, WFP reopened a kitchen in Beit Lahiya, North Gaza, with a capacity to provide 20,000 daily meals, and another in Rafah, which serves 1,500 daily meals. In the Middle/South, some kitchens will be relocated based on evolving needs on the ground.
- A total of 14,460 pregnant and breastfeeding women and girls, along with 32,085 children under five**, received 790,170 lipid-based nutritional supplement packs. WFP distributed **Energy bars** at welcome points in Gaza City for those returning.
- On 26 January, **WFP transferred multi-purpose cash assistance (MPCA) to the e-wallets of 7,000 households (30,000 people) in Gaza, to enable them to meet their basic needs beyond food as they seek to relocate and rebuild**. WFP aims to reach a total of 30,000 households (150,000 beneficiaries) in one month.

General Food Assistance in the West Bank (1-25 January)

- In the West Bank, 185,067 beneficiaries** redeemed USD 2.5 million through cash-based transfers. In parallel, **8,449 people received in-kind food distributions**, consisting of 4,581 rations of food commodities.
- In **Jenin**, in response to escalating hostilities, WFP with other cash actors reached **1,167 households displaced outside of the Refugee Camp, with a one-time multi-purpose cash transfer** of 1,640 ILS (USD 447) to cover their basic needs.

Supply chain

- Since the start of the crisis, **WFP has delivered 12,467 WFP trucks with some 192,278 mt of food** into Gaza.

- Following the ceasefire on 19 January, three border crossings are operational: **West Erez/Zikim** which Handles commodities from the Jordan corridor; **Erez** which facilitates goods via Israel, the Ashdod corridor, back-to-back convoys through the Jordan corridor, and the West Bank; and **Kerem Shalom/Karam Abu Salem** which processes goods from Israel and the Egypt corridor, including trucks carrying fuel and gas.

TOTAL AID DELIVERED TO THE GAZA STRIP IN JANUARY

1,026 WFP TRUCKS | 12,157 mt | 1,549 PARTNER TRUCKS | 26,277 pallets

EGYPT CORRIDOR	JORDAN CORRIDOR	ASHDOD CORRIDOR
485 WFP TRUCKS 5,347 mt	236 WFP TRUCKS 3,131 mt	305 WFP TRUCKS 3,679 mt
214 PARTNER TRUCKS 3,137 pallets <i>Via Kerem Shalom</i>	479 PARTNER TRUCKS 8,447 pallets <i>Via West Erez (Zikim) and Kerem Shalom</i>	856 PARTNER TRUCKS 14,693 pallets <i>Via Erez, West Erez</i>

Since ceasefire

TOTAL FOOD DELIVERED



CLUSTERS AND COMMON SERVICES

Food Security Sector (FSS)

- FSS partners prepare to scale-up in-kind food distribution to address the significant influx of internally displaced populations (IDPs) returning to Gaza City. Locations requiring assistance are being identified through joint assessments.
- Partners provided food parcels and wheat flour to families in previously besieged areas of Jabalia in North Gaza.**
- Partners are conducting hot meal kitchen assessments in Rafah and Khan Younis. The reopening of kitchens in these areas will depend on population movements.

Logistics Cluster

- Since the ceasefire, the Logistics Cluster facilitates transport services from north and south entry points to partners' warehouses and common storage facilities.
- An additional 1,700 m² of temporary storage space has been secured in northern Gaza for partners' cargo, available for 24-hour use.
- Between 19–26 January, six direct convoys from Amman to Erez West were facilitated, with 107 trucks carrying 922 mt of food, WASH, and shelter items for nine partners.
- The cluster so far has consolidated 35,000 m³ of cargo in Amman and received 62,491 m³ for storage in Gaza.

ACCOUNTABILITY TO AFFECTED POPULATIONS

- WFP's self-registration link** has facilitated 1.8 million registrations for assistance since the start of the crisis, including over 66,260 during January. **Close to 55,000 people have updated their data as they return North.**
- WFP's inter-agency hotline** recorded 23,626 cases in January so far, with 68 percent related to WFP assistance.